



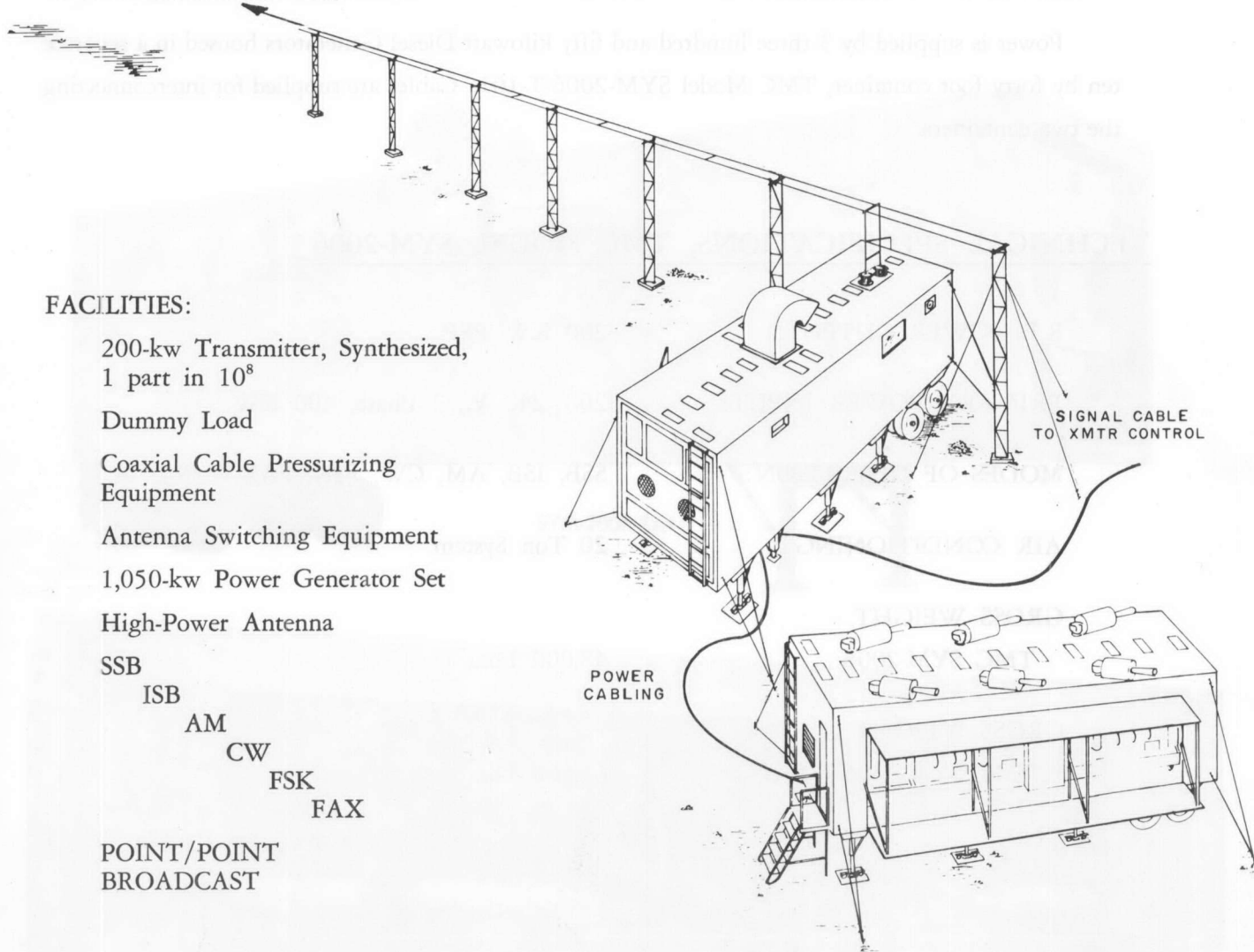
TECHNICAL BULLETIN NUMBER 9502

Transportable High-Powered  
Transmitting Facility  
TMC Model SYM-2006

*File*



TO BALANCED OR  
UNBALANCED ANTENNA



FACILITIES:

200-kw Transmitter, Synthesized,  
1 part in  $10^8$

Dummy Load

Coaxial Cable Pressurizing  
Equipment

Antenna Switching Equipment

1,050-kw Power Generator Set

High-Power Antenna

SSB

ISB

AM

CW

FSK

FAX

POINT/POINT  
BROADCAST

## Transportable High-Powered Transmitting Facility

The TMC Model SYM-2006 Transportable High Power Transmitting System is designed for use with external terminal equipments to provide a very reliable high power transmitter facility tunable to any frequency from two to twenty-eight megacycles in one hundred cycle steps. The basic transmitter is an AN/FRT-62 housed in a forty by ten foot air conditioned transportable container.

Both fifty ohm unbalanced and six hundred ohm balanced outputs are provided. A Dummy Load installed within the container may be automatically switched in for tune-up purposes. Other equipments include pressurizing and dehydration facilities for coaxial transmission lines for use with antennas such as a conical monopole. Both balanced and unbalanced antennas can be supplied to meet your requirements.

The TMC Model SYM-2006 may be quickly set up for emergency operation with power outputs of forty kilowatts or ten kilowatts, or the forty kilowatt driver may be used independently.

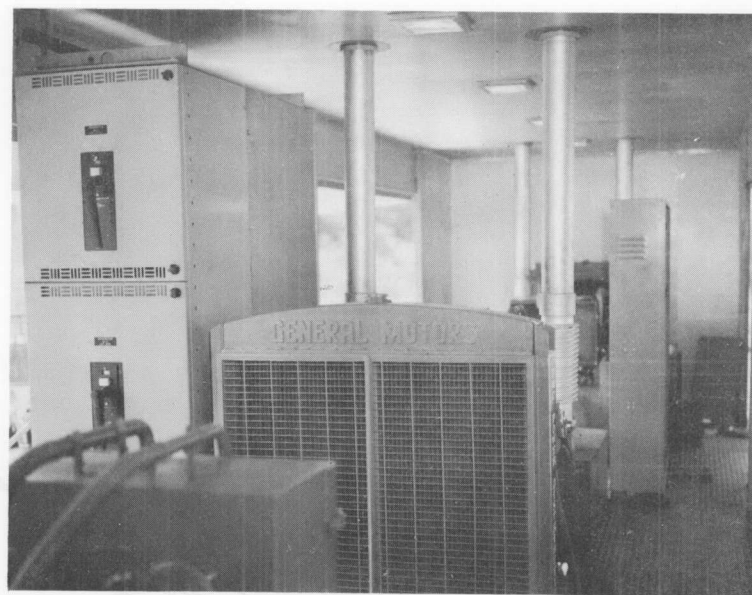
Power is supplied by 3 three hundred and fifty kilowatt Diesel Generators housed in a separate ten by forty foot container, TMC Model SYM-2006-T-101. Cables are supplied for interconnecting the two containers.

### TECHNICAL SPECIFICATIONS, TMC MODEL SYM-2006

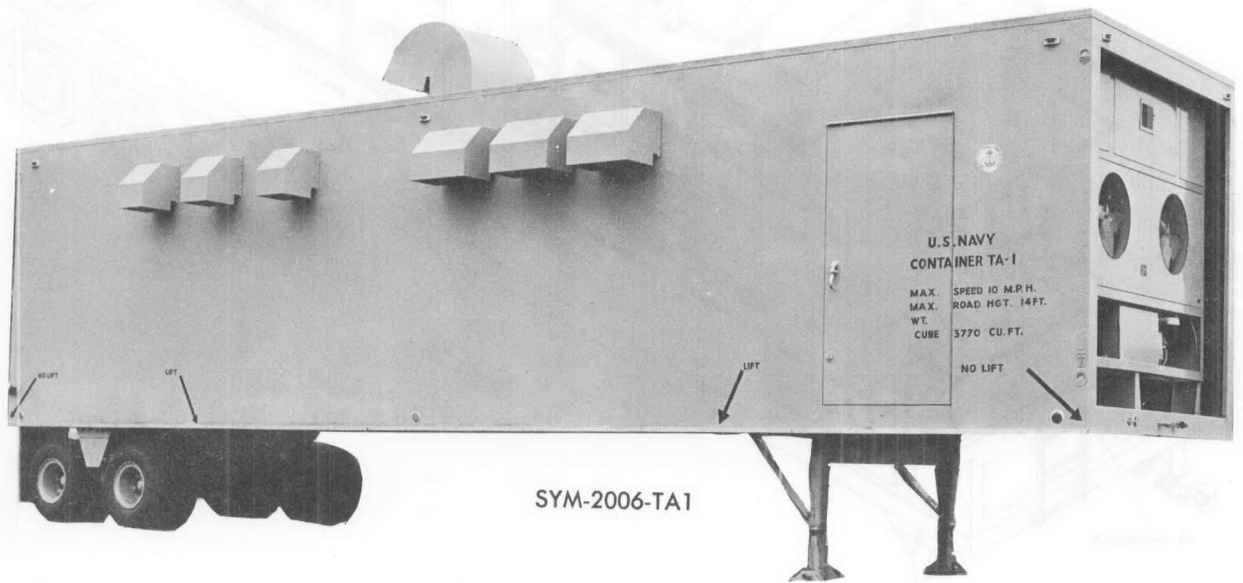
R.F. POWER OUTPUT:	200 KW PEP
PRIMARY POWER INPUT:	208 - 240 V., 3 Phase, 400 KW.
MODES OF OPERATION:	SSB, ISB, AM, CW, FSK, FAX.
AIR CONDITIONING:	20 Ton System.
GROSS WEIGHT	
TMC SYM-2006:	48,000 Lbs.
GROSS WEIGHT	
TMC SYM-2006-T-101	61,500 Lbs.



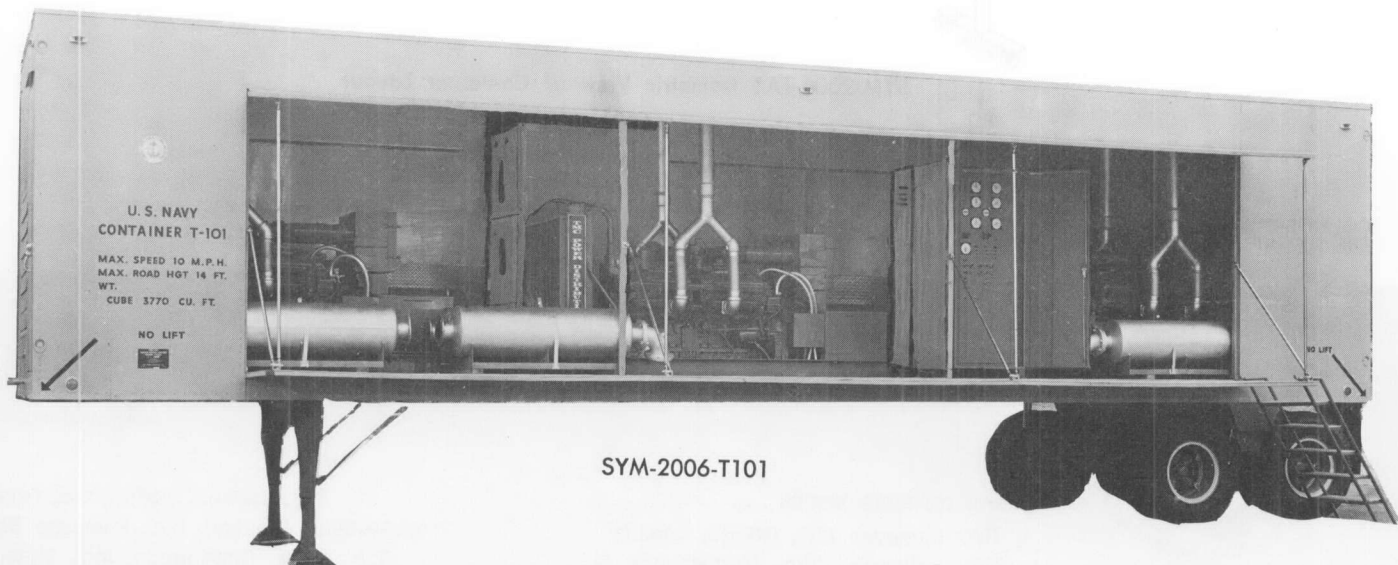
SYM-2006-TA1 Interior View



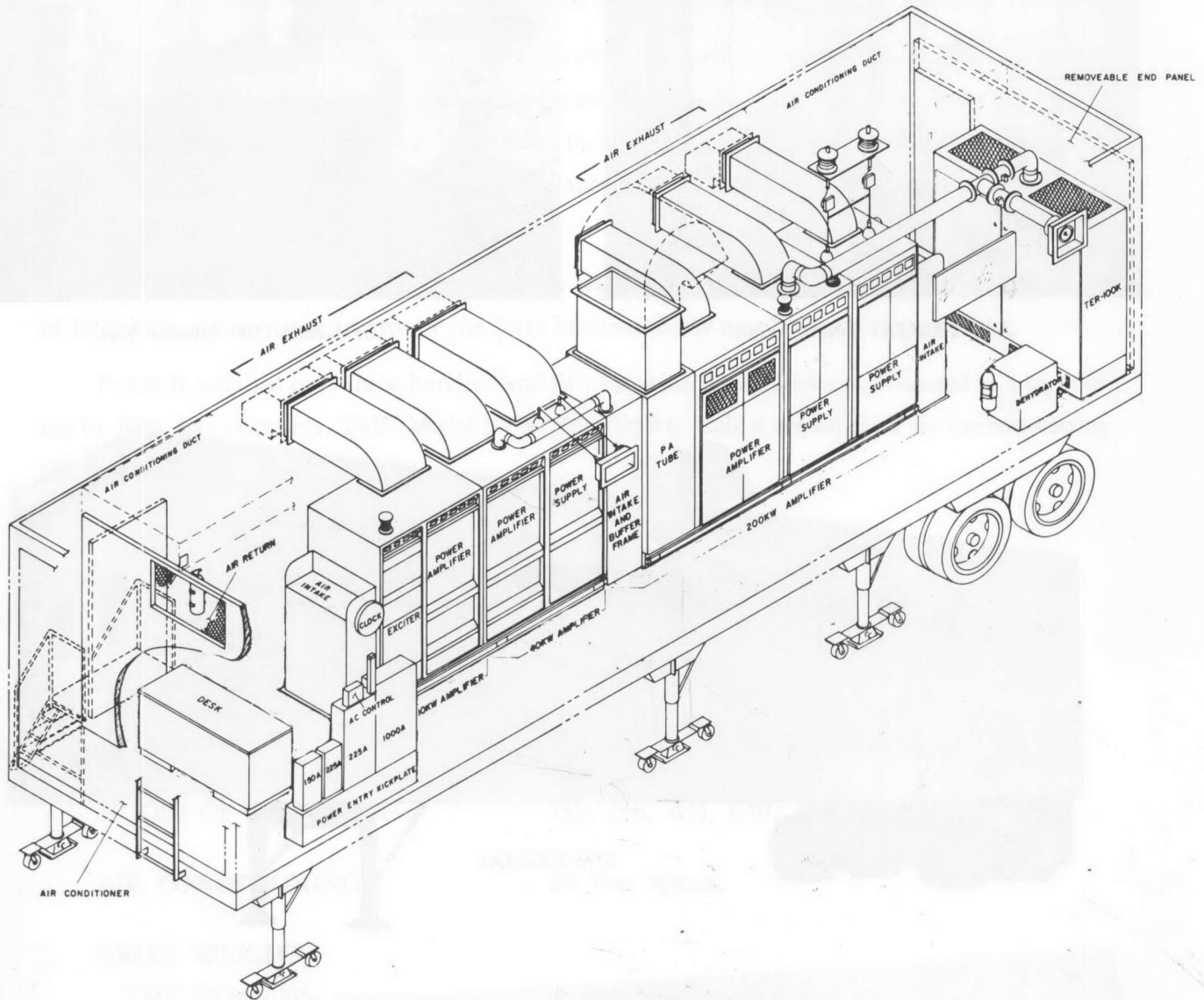
SYM-2006-T101 Interior View



SYM-2006-TA1



SYM-2006-T101



SYM-2006-TA1 Isometric View of Container Layout

COPYRIGHT 1964  
THE TECHNICAL MATERIEL CORP.

P



# THE TECHNICAL MATERIEL CORPORATION

MAMARONECK, N. Y.

AND ITS SUBSIDIARIES . . .

- TMC (Canada), Ltd., Ottawa, Canada
- TMC Industrial Corp., Mamaroneck, N. Y.
- TMC Systems, Inc., Alexandria, Va.
- TMC Systems, (Texas), Inc., Garland, Texas

- TMC Systems, (Calif.), Inc., Oxnard, Calif.
- TMC Systems, (Florida), Inc., Pompano Beach, Fla.
- TMC Power Distribution, Inc., Alexandria, Va.
- TMC Systems, A. G., Luzern, Switzerland
- TMC Research Inc., San Luis Obispo, Calif.

CABLE  
TEPEI

TWX  
914-835-3782