

IF IT IS FOUND DESIRABLE TO CHANGE ANY TOLERANCE OR OTHER DETAIL SPECIFIED ON THIS DRAWING NOTIFY THE PURCHASER PROMPTLY.

STANDARD DRAWING

UG-103/U

MAXIMUM ALLOWABLE TOLERANCES HAVE BEEN DETERMINED AND DEVIATIONS WILL BE CAUSE FOR REJECTION. REMOVE ALL BURRS AND SHARP EDGES

USED ON

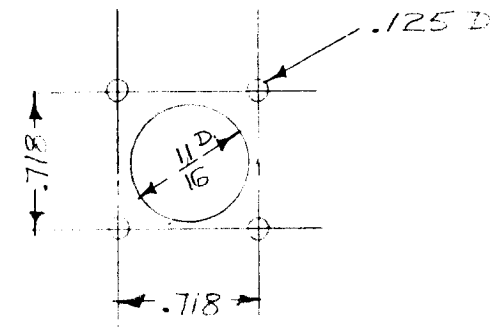
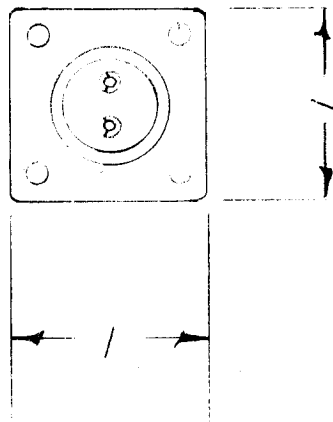
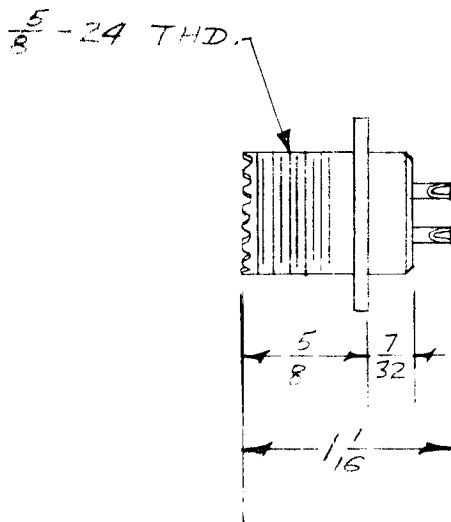
MODEL

PROJECT NO.

ASS'Y. NO.

DATE

USE WITH 90-264
 SIG. C. DWG. NO. SC-D-5941
 USE WITH CABLES RG 22, RG 22 A/U



CHASSIS DRILLING PLAN

DIM. FOR REF. ONLY (EXCEPT DRILLING PLAN)

REF. : AMPHENOL

REQ.	ITEM	PART NO.	DESCRIPTION	SYMBOL
		<i>ff</i>	THE TECHNICAL MATERIEL CORP.	
			MAMARONECK. NEW YORK	
		STOCK SIZE	CONNECTOR, RECEPTACLE	
		MATERIAL	UHF SERIES	
		WEIGHT PER PC.	16 11-20-53	
		TYPE & TEMPER	DRAWN	ELEC. DES. APP.
			<i>J. A. Ve</i>	MECH. DES. APP.
		HEAT TREAT. SPEC.	CHECKED	FINAL APPROVAL
				<i>UG-103/U</i>
		FINISH & SPEC. NO.		

ISSUE	ITEM	CHANGED FROM	DATE	CN. NO.	DRAFTS	CHECKER	ENG. APP.
TOLERANCES			SCALE FULL				
ALL OTHERS	DEC. DIM. ±	FRAC. DIM. ±	DRILL, PUNCH, COMMERCIAL STOCK SIZES AND MANUFACTURERS TOLERANCES ARE NOT INCLUDED.				
	ANGULAR DIM. ±						

IF IT IS FOUND DESIRABLE TO CHANGE ANY TOLERANCE OR OTHER DETAIL SPECIFIED ON THIS DRAWING NOTIFY THE PURCHASER PROMPTLY.

STANDARD DRAWING

UG-104/U

MAXIMUM ALLOWABLE TOLERANCES HAVE BEEN DETERMINED AND DEVIATIONS WILL BE CAUSE FOR REJECTION. REMOVE ALL BURRS AND SHARP EDGES

USED ON

MODEL

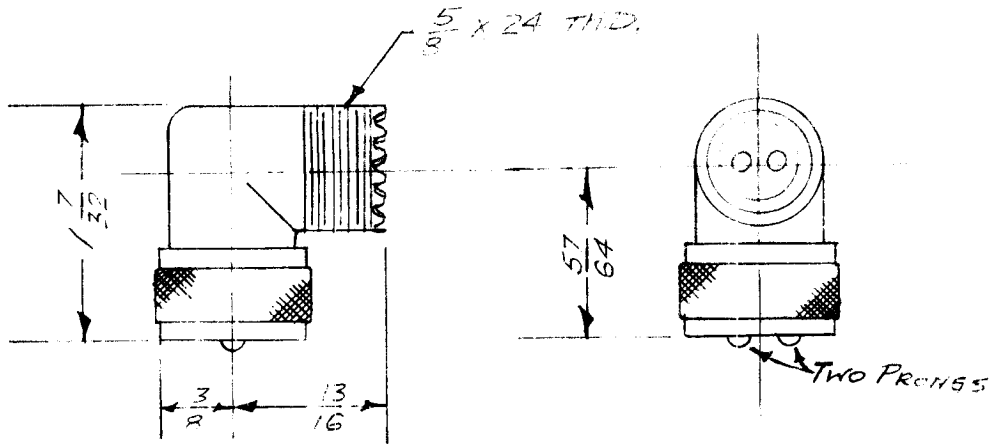
PROJECT NO.

ASS'Y. NO.

DATE

SIG. C. NO. PL-293

SIG. C. DWG. NO. SC-D-5943



DIM. FOR REF ONLY

REF: AMPHENOL 83-22AP

REQ.	ITEM	PART NO.	DESCRIPTION	SYMBOL
			THE TECHNICAL MATERIEL CORP.	
			MAMARONECK. NEW YORK	
			CONNECTOR ADAPTER	
			TWIN ANGLE SERIES UHF	
			16 11-23-58	
			DRAWN	ELEC. DES. APP. MECH. DES. APP.
			CHECKED	FINAL APPROVAL
				UG-104/U

ISSUE	ITEM	CHANGED FROM	DATE	CN. NO.	DRAFTS	CHECKER	ENG. APP.

TOLERANCES

SCALE FULL

ALL OTHERS
DEC. DIM. ±
FRAC. DIM. ±
ANGULAR DIM. ±

DRILL, PUNCH, COMMERCIAL STOCK SIZES AND MANUFACTURERS TOLERANCES ARE NOT INCLUDED.

IF IT IS FOUND DESIRABLE TO CHANGE ANY TOLERANCE OR OTHER DETAIL SPECIFIED ON THIS DRAWING NOTIFY THE PURCHASER PROMPTLY.

STANDARD DRAWING

UG-106/U
UG-177/U

MAXIMUM ALLOWABLE TOLERANCES HAVE BEEN DETERMINED AND DEVIATIONS WILL BE CAUSE FOR REJECTION. REMOVE ALL BURRS AND SHARP EDGES

USED ON

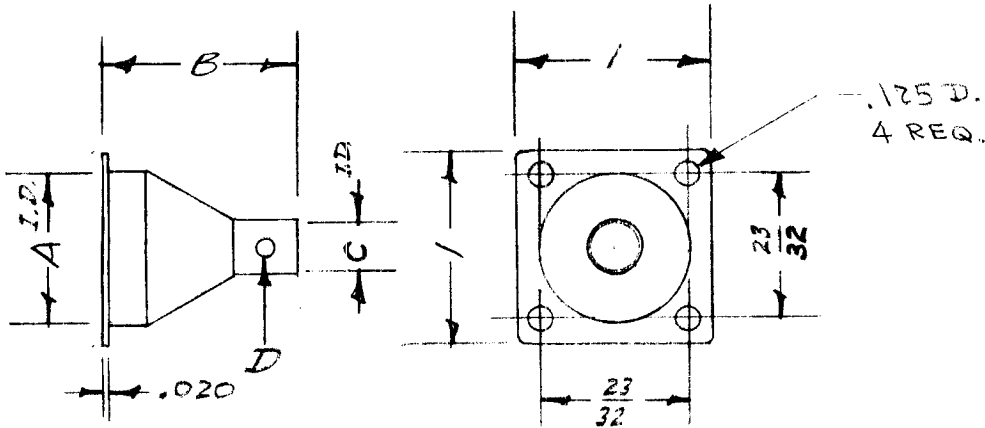
MODEL

PROJECT NO.

ASS'Y. NO.

DATE

NO.	A	B	C	D	WEIGHT
UG-106/U	5/8	3/4	.344	4 HOLES .125 D.	.011
UG-177/U	5/8	3/4	.145	NONE	.009



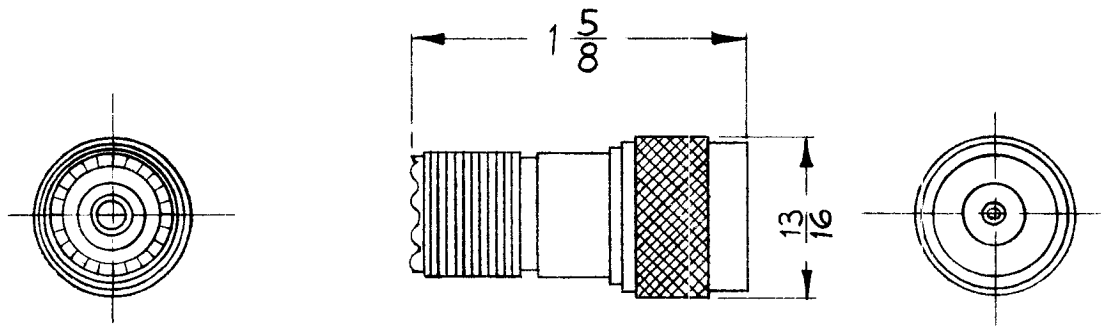
REQ.	ITEM	PART NO.	DESCRIPTION	SYMBOL
		<i>ff</i>	THE TECHNICAL MATERIEL CORP. MAMARONECK. NEW YORK	
		STOCK SIZE		
		BRASS	HOOD RECEPTACLE	
		MATERIAL		
		WEIGHT PER PC.		
		<i>ff</i>		
		TYPE & TEMPER	16 12-11-53	
		<i>ff</i>		
		HEAT TREAT. SPEC.	DRAWN	ELEC. DES. APP.
		SILVER PLATE	CHECKED	MECH. DES. APP.
		FINISH & SPEC. NO.		FINAL APPROVAL
				UG-106/U
				UG-177/U

—	—	REDRAWN - NO REV.	12/11/53	—	16	CD	WJC
ISSUE	ITEM	CHANGED FROM	DATE	CN. NO.	DRAFTS	CHECKER	ENG. APP.

TOLERANCES		SCALE	<i>ff</i>
ALL OTHERS	DEC. DIM. ± FRAC. DIM. ± ANGULAR DIM. ±	DRILL, PUNCH, COMMERCIAL STOCK SIZES AND MANUFACTURERS TOLERANCES ARE NOT INCLUDED.	

REQ. PER UNIT	USED ON		
	MODEL	ASSY. NO.	DATE
			1-30-61
UG-146/U			

DIELECTRIC : REXOLITE
 GASKET : SILICONE
 MATERIAL : BRASS
 FINISH : SILVER PLATE



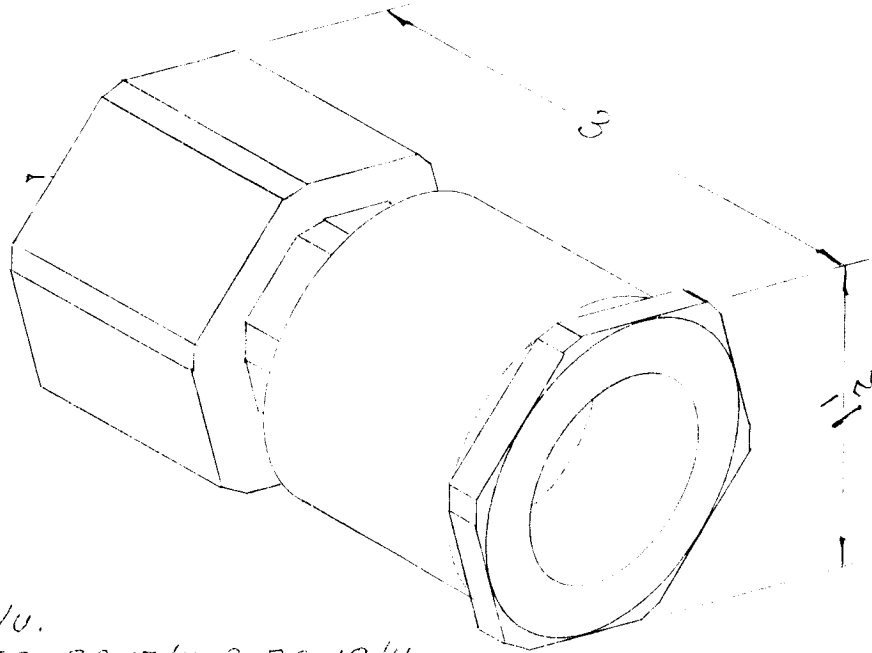
								REQ.	ITEM	PART NO.	DESCRIPTION	SYMBOL
										THE TECHNICAL MATERIEL CORP. MAMARONECK, NEW YORK		
										CONNECTOR STRAIGHT ADAPTER N MALE TO UHF FEMALE		
										MATERIAL		
										DRAWN		
										CHECKED		
										FINAL APPROVAL		
										UG-146/U		
										ELEC. DES. APP		
										MECH. DES. APP		
										FINISH & SPEC. NO.		

REQ. PER UNIT	E-494-P		USED ON		UG-154/U	A
	MODEL		ASS'Y. NO.	DATE		
			AX-287			

OBSOLETE

SEE MS91604
(MIL-C-3650A)

1 1/4" - 18 INTERNAL THD.



NOTE:

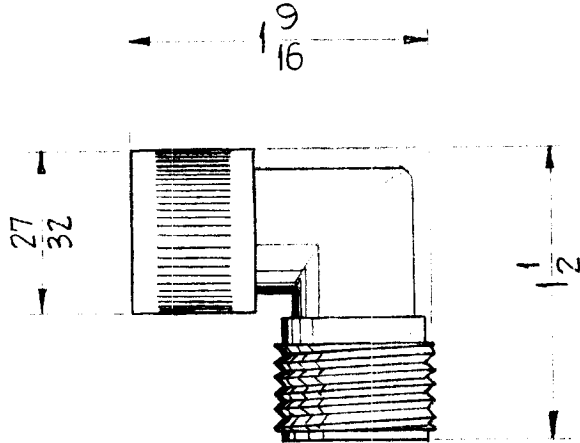
1. MATES WITH UG-352/U.
2. FOR USE WITH CABLES RG-17/U & RG-18/U.
3. THE INSULATION AND CENTER CONTACT ARE PROVIDED BY THE DIELECTRIC AND CENTER CONDUCTOR OF THE CABLE.

REF: AMPHENOL CORP. CAT. NO. 82-59

REQ.	ITEM	PART NO.	DESCRIPTION				SYMBOL	
			THE TECHNICAL MATERIEL CORP.					
			MAMARONECK. NEW YORK					
			PLUG, CONNECTOR					
A			OBSOLETE NOTE ADDED 6-5-67 18'263 206 <i>[Signature]</i> RHJ					
ISSUE	ITEM	CHANGED FROM	DATE	CH. NO.	DRAFTS	CHECKER	ENG. APP.	
TOLERANCES			SCALE:					
DEC. DIM. ±			MAXIMUM ALLOWABLE TOLERANCES HAVE BEEN DETERMINED AND ANY DEVIATIONS WILL BE CAUSE FOR REJECTION. REMOVE ALL BURRS AND SHARP EDGES					
FRAC. DIM. ±								
ANGULAR DIM. ±								
TYPE & TEMPER		HEAT TREAT. SPEC.	DRAWN	CHECKED	FINAL APPROVAL			
					A.J.J.			
FINISH & SPEC. NO.		ELEC. DES. APP.	MECH. DES. APP.	UG-154/U				A

REQ. PER. UNIT	USED ON			UG-212C/U
	MODEL	ASS'Y. NO.	DATE	
			1-25-61	

SPECIFICATIONS



DIELECTRIC: TEFLON
 GASKET: SILICONE
 WEATHER PROOF: YES
 NOMINAL IMEDANCE: CONSTANT FOR 50 Ω
 O.K. FOR 70 Ω WHEN NOT CRITICAL.
 DESCRIPTION: HI VOLTAGE TYPE COUPLING RING SCREW TYPE.
 MAX. VOLTAGE: PEAK OF 4000 V @ 50,000 FEET
 GOOD TO 5000V w/MODIFICATION.
 PRACTICAL FREQ. LIMIT: GOOD TO 3000 Mc/SEC.

								REQ.	ITEM	PART NO.	DESCRIPTION	SYMBOL	
											THE TECHNICAL MATERIEL CORP.		
											MAMARONECK, NEW YORK		
								STOCK SIZE			CONNECTOR, RIGHT ANGLE ADAPTER		
								MATERIAL			HN SERIES		
ISSUE	ITEM	CHANGED FROM	DATE	CH. NO.	DRAFTS	CHECKER	ENG. APP.				<i>D. J. [Signature]</i>	<i>[Signature]</i>	<i>[Signature]</i>
TOLERANCES			SCALE:					TYPE & TEMPER	HEAT TREAT. SPEC.	DRAWN	CHECKED	FINAL APPROVAL	
DEC. DIM. ±			MAXIMUM ALLOWABLE TOLERANCES HAVE BEEN DETERMINED AND ANY DEVIATIONS WILL BE CAUSE FOR REJECTION. REMOVE ALL BURRS AND SHARP EDGES									UG-212C/U	
FRAC. DIM. ±													
ANGULAR DIM. ±								FINISH & SPEC. NO.		ELEC. DES. APP	MECH. DES. APP		

IF IT IS FOUND DESIRABLE TO CHANGE ANY TOLERANCE OR OTHER DETAIL SPECIFIED ON THIS DRAWING NOTIFY THE PURCHASER PROMPTLY.

STANDARD DRAWING

UG-245/U

MAXIMUM ALLOWABLE TOLERANCES HAVE BEEN DETERMINED AND DEVIATIONS WILL BE CAUSE FOR REJECTION. REMOVE ALL BURRS AND SHARP EDGES

USED ON

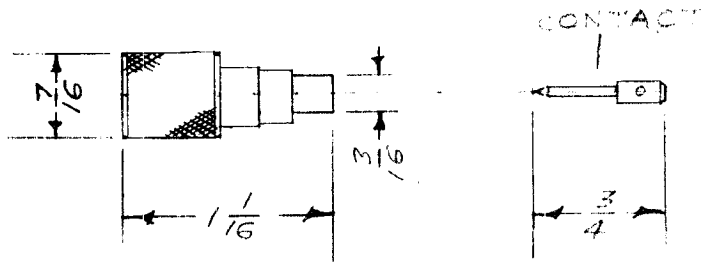
MODEL

PROJECT NO.

ASS'Y. NO.

DATE

NAVY DWG. NO. RE-49F448
USE WITH CABLES RG 55, 58/U



NOT RECOMMENDED FOR NEW T M C EQUIPMENT.

DIM. FOR REF. ONLY

REF: INDUSTRIAL PRODUCT # 1950

REQ.	ITEM	PART NO.	DESCRIPTION	SYMBOL
			THE TECHNICAL MATERIEL CORP.	
			MAMARONECK. NEW YORK	
			CONNECTOR, PLUG	
			SERIES BN	
			16 11-19-53	
			DRAWN	ELEC. DES. APP. MECH. DES. APP.
			CHECKED	FINAL APPROVAL
				UG-245/U

ISSUE	ITEM	CHANGED FROM	DATE	CN. NO.	DRAFTS	CHECKER	ENG. APP.
TOLERANCES			SCALE FULL				
ALL OTHERS	DEC. DIM. ± FRAC. DIM. ± ANGULAR DIM. ±		DRILL, PUNCH, COMMERCIAL STOCK SIZES AND MANUFACTURERS TOLERANCES ARE NOT INCLUDED.				

IF IT IS FOUND DESIRABLE TO CHANGE ANY TOLERANCE OR OTHER DETAIL SPECIFIED ON THIS DRAWING NOTIFY THE PURCHASER PROMPTLY.

STANDARD DRAWING

UG-255/U

MAXIMUM ALLOWABLE TOLERANCES HAVE BEEN DETERMINED AND DEVIATIONS WILL BE CAUSE FOR REJECTION. REMOVE ALL BURRS AND SHARP EDGES

USED ON

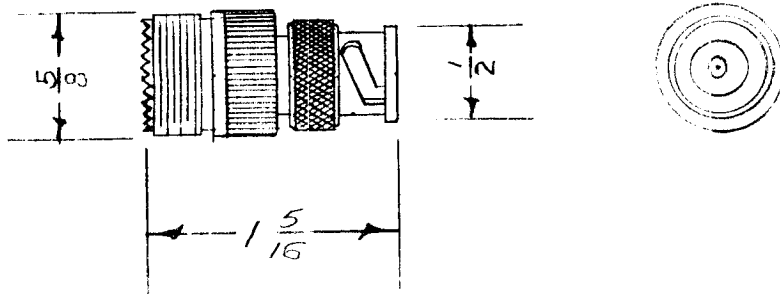
MODEL

PROJECT NO.

ASS'Y. NO.

DATE

NAVY DWG. NO. RE49 F 378
 USE WITH CABLES - (SEE SERIES)
 MATES WITH UG-90/U AND 49190

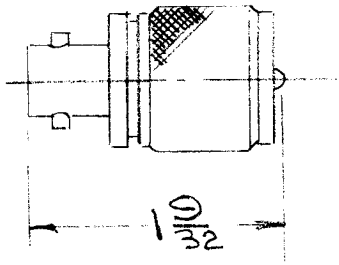


DIM. FOR REFERENCE ONLY
 REF: ELECTRO-PRECISION PRODUCTS

REQ.	ITEM	PART NO.	DESCRIPTION	SYMBOL
		SS	THE TECHNICAL MATERIEL CORP. MAMARONECK. NEW YORK	
		SS	CONNECTOR, ADAPTER	
		SS	SERIES BNC TO UHF	
		SS	11-19-53	
		SS	DRAWN	
		SS	CHECKED	
		SS	FINAL APPROVAL	
		SS	UG-255/U	

ISSUE	ITEM	CHANGED FROM	DATE	CN. NO.	DRAFTS	CHECKER	ENG. APP.
TOLERANCES			SCALE FULL				
ALL OTHERS	DEC. DIM. ± FRAC. DIM. ± ANGULAR DIM. ±	DRILL, FUNCH. COMMERCIAL STOCK SIZES AND MANUFACTURERS TOLERANCES ARE NOT INCLUDED.					

REQ. PER UNIT	USED ON			UG-273/U
	MODEL	ASS'Y. NO.	DATE	



ISSUE	ITEM	CHANGED FROM	DATE	CH. NO.	DRAFTS	CHECKER	ENG. APP.	REQ.	ITEM	PART NO.	DESCRIPTION	SYMBOL	
											THE TECHNICAL MATERIEL CORP. MAMARONECK, NEW YORK ADAPTER, STRAIGHT BNC FEMALE - UHF MALE		
										STOCK SIZE			
										MATERIAL			
											HSc 16 9.6 UG-273/U	[Signature] FINAL APPROVAL	
TOLERANCES			SCALE:					TYPE & TEMPER	HEAT TREAT. SPEC.	DRAWN	CHECKED	FINAL APPROVAL	
DEC. DIM. ± FRAC. DIM. ± ANGULAR DIM. ±			MAXIMUM ALLOWABLE TOLERANCES HAVE BEEN DETERMINED AND ANY DEVIATIONS WILL BE CAUSE FOR REJECTION. REMOVE ALL BURRS AND SHARP EDGES					FINISH & SPEC. NO.		ELEC. DES. APP	MECH. DES. APP		

IF IT IS FOUND DESIRABLE TO CHANGE ANY TOLERANCE OR OTHER DETAIL SPECIFIED ON THIS DRAWING NOTIFY THE PURCHASER PROMPTLY.

STANDARD DRAWING

UG-274/U

MAXIMUM ALLOWABLE TOLERANCES HAVE BEEN DETERMINED AND DEVIATIONS WILL BE CAUSE FOR REJECTION. REMOVE ALL BURRS AND SHARP EDGES

REQ
PER
UNIT

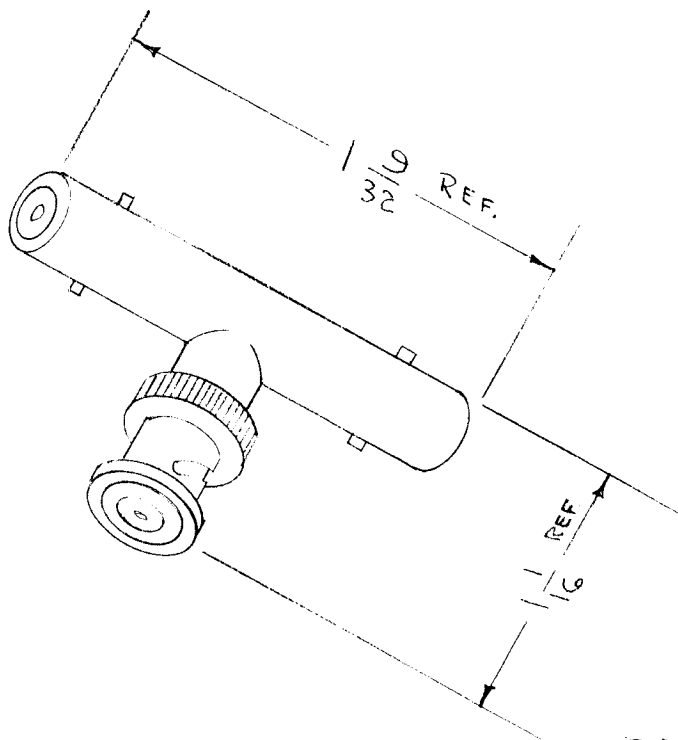
USED ON

MODEL

PROJECT NO.

ASS'Y. NO.

DATE



52 OHMS IMPEDANCE

REF. INDUSTRIAL PRODUCTS CO. NO. A200

REQ.	ITEM	PART NO.	DESCRIPTION	SYMBOL
			THE TECHNICAL MATERIEL CORP. MAMARONECK. NEW YORK	
		STOCK SIZE	CONNECTOR ADAPTER	
		MATERIAL WEIGHT PER PC.	"TEE" TYPE	
		TYPE & TEMPER	C.D.D. 3-2-54	<i>WDC</i>
			DRAWN	ELEC. DES. APP. MECH. DES. APP.
			<i>f. A. de</i>	<i>WDC</i>
		HEAT TREAT. SPEC.	CHECKED	FINAL APPROVAL
		FINISH & SPEC. NO.		UG-274/U

ISSUE	ITEM	CHANGED FROM	DATE	CN. NO.	DRAFTS	CHECKER	ENG. APP.
TOLERANCES			SCALE				
ALL OTHERS	DEC. DIM. \pm FRAC. DIM. \pm ANGULAR DIM. \pm	DRILL, PUNCH, COMMERCIAL STOCK SIZES AND MANUFACTURERS TOLERANCES ARE NOT INCLUDED.					

IF IT IS FOUND DESIRABLE TO CHANGE ANY TOLERANCE OR OTHER DETAIL SPECIFIED ON THIS DRAWING NOTIFY THE PURCHASER PROMPTLY.

STANDARD DRAWING

UG-290/U

MAXIMUM ALLOWABLE TOLERANCES HAVE BEEN DETERMINED AND DEVIATIONS WILL BE CAUSE FOR REJECTION. REMOVE ALL BURRS AND SHARP EDGES

USED ON

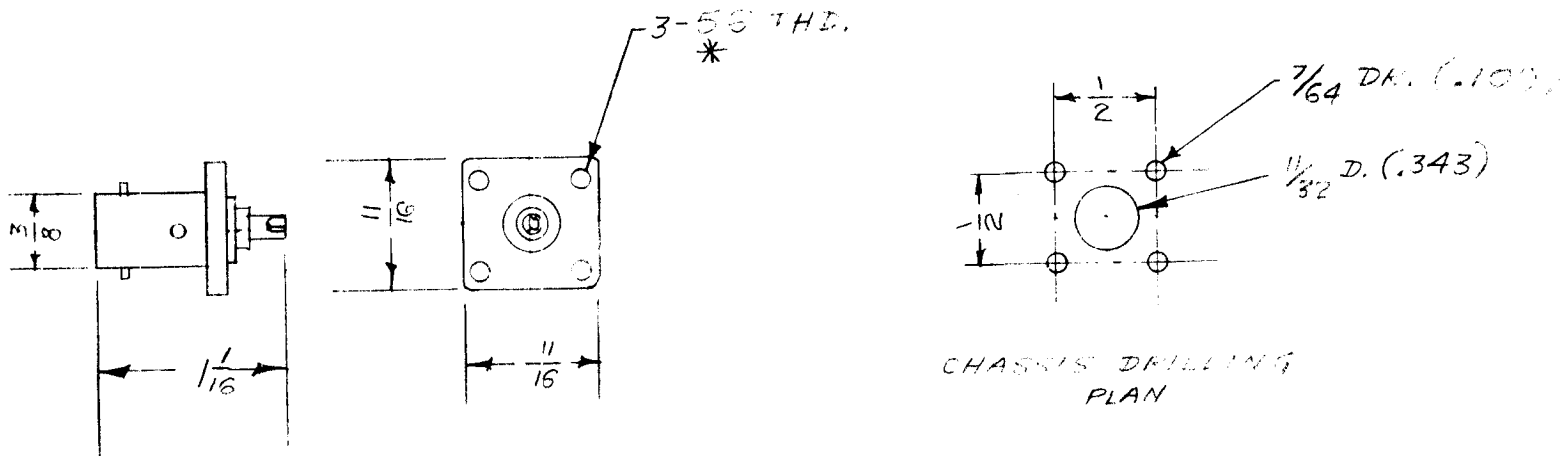
MODEL

PROJECT NO.

ASS'Y. NO.

DATE

NAVY DWG. No. RE 49 F 331
USE WITH CABLES RG-55, 58, 58A, 59, 62, 71/U



* NOTES:

WHEN CLEARANCE HOLES ARE REQ. DIM. FOR REF. ONLY (EXCEPT DRILLING PLAN)
USE UG-447/U

REF: AMPHENOL 31-003

REQ.	ITEM	PART NO.	DESCRIPTION	SYMBOL
			THE TECHNICAL MATERIEL CORP. MAMARONECK, NEW YORK	
			CONNECTOR, RECEPTACLE	
			SERIES BNC	
			16 11-19-53	
			DRAWN	ELEC. DES. APP.
			CHECKED	FINAL APPROVAL
				UG-290/U

ISSUE	ITEM	CHANGED FROM	DATE	CN. NO.	DRAFTS	CHECKER	ENG. APP.
TOLERANCES			SCALE FULL				
ALL OTHERS	DEC. DIM. ± FRAC. DIM. ± ANGULAR DIM. ±		DRILL, PUNCH, COMMERCIAL STOCK SIZES AND MANUFACTURERS TOLERANCES ARE NOT INCLUDED.				

IF IT IS FOUND DESIRABLE TO CHANGE ANY TOLERANCE OR OTHER DETAIL SPECIFIED ON THIS DRAWING NOTIFY THE PURCHASER PROMPTLY.

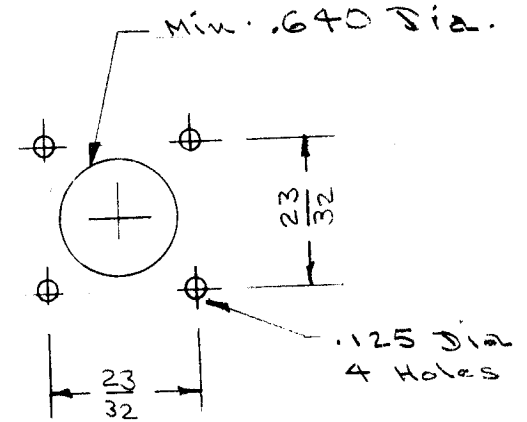
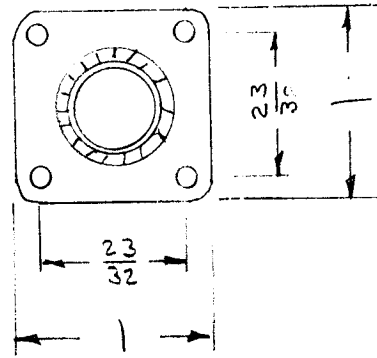
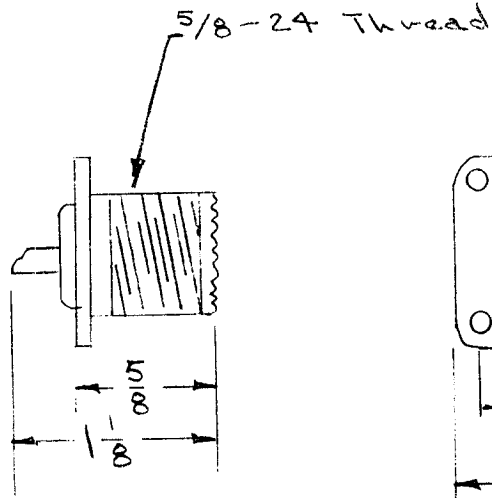
STANDARD DRAWING

UG-296/U | A

MAXIMUM ALLOWABLE TOLERANCES HAVE BEEN DETERMINED AND DEVIATIONS WILL BE CAUSE FOR REJECTION. REMOVE ALL BURRS AND SHARP EDGES

USED ON

MODEL	PROJECT NO.	ASS'Y. NO.	DATE
TAC-1	132	A-579	12/27/53



DRILLING PLAN.

DIMENSIONS FOR REF ONLY

NOTE:

SO-239A TO BE USED IN PLACE OF UG-296/U

INSULATION: TEFLON

REQ.	ITEM	PART NO.	DESCRIPTION	SYMBOL
			THE TECHNICAL MATERIEL CORP.	
			MAMARONECK. NEW YORK	
STOCK SIZE			RECEPTACLE	
MATERIAL		WEIGHT PER PC.		
TYPE & TEMPER			G.T.O	
DRAWN			ELEC. DES. APP.	MECH. DES. APP.
HEAT TREAT. SPEC.			CHECKED	FINAL APPROVAL
FINISH & SPEC. NO.			UG-296/U A	

A	I	NOTE ADDED	DATE	CN. NO.	DRAFTS	CHECKER	ENG. APP.
		NOTE ADDED	12/14/56	1	JAD	WIC	ARB
ISSUE	ITEM	CHANGED FROM	DATE	CN. NO.	DRAFTS	CHECKER	ENG. APP.
TOLERANCES			SCALE				
ALL OTHERS	DEC. DIM. ±	FRAC. DIM. ±	DRILL, PUNCH, COMMERCIAL STOCK SIZES AND MANUFACTURERS TOLERANCES ARE NOT INCLUDED.				
	ANGULAR DIM. ±						