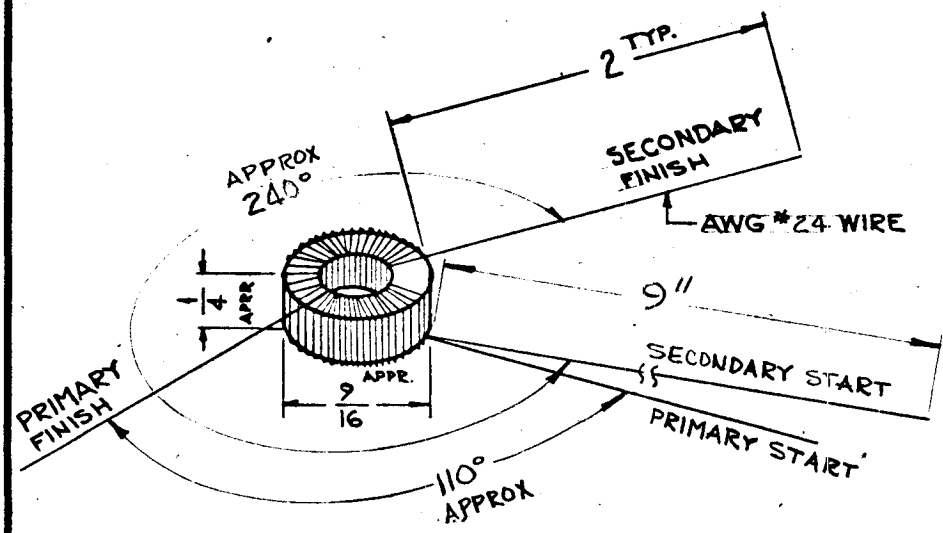


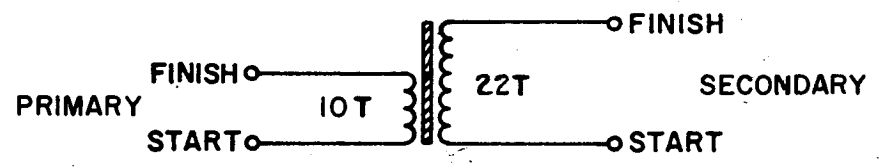
THE CONTENTS OF THIS DRAWING ARE THE EXCLUSIVE PROPERTY OF THE TECHNICAL MATERIEL CORP. ITS UNAUTHORIZED USE OR REPRODUCTION IN WHOLE OR IN PART IS STRICTLY FORBIDDEN.

REQ. PER UNIT	USED ON		
	MODEL	ASS'Y. NO.	DATE
1	HFR-1A		3-12-64
1	HFR-2		3-12-64

TZ 179 A



SCHMATIC DIAGRAM



ELECTRICAL SPECIFICATIONS

SECONDARY ~ $L = 2.32 \mu h \pm 0.05 \mu h$
 WITH COIL CLAMPED INTO Q-METER 1/2" AWAY FROM TERMINALS, WITH START END OF COIL TO LOW SIDE.
 $Q = 180 \text{ MIN AT } 7.9 \text{ MC}$
 $C \text{ DISTRIB} = 0.8 \mu mf \text{ (FOR REF ONLY)}$

PRIMARY ~ $L = 0.79 \mu h \pm 0.04 \mu$
 $Q = 75 \text{ MIN. AT } 9.5 \text{ MC}$
 $C \text{ dist.} = 2 \mu mf \text{ (FOR REF ONLY)}$

MODEL	REQ	FUNCTION	FREQ (MC)	SYMBOL
HFR-1A	1	BAND #5	8-12 MC	T1006
HFR-2	1	BAND #5	8-12 MC	T1006

REQ.	ITEM	PART NO.	DESCRIPTION	SYMBOL							
A	ON ELECT. SPECS. NOTE PRIMARY ADDED - Q=75 WAS Q=85	4-10-67 18095									
Ø	ORIGINAL RELEASE FOR PRODUCTION	8/13/64									
X	EXPERIMENTAL RELEASE	3-30-64									
SYM	DESCRIPTION	DATE	CH. NO.	DRAFTS	CHECKER	ENG. APP.					
UNLESS OTHERWISE SPECIFIED:		SCALE: NONE		IA 3536							
DIMENSIONS ARE IN INCHES		MAXIMUM ALLOWABLE TOLERANCES HAVE BEEN DETERMINED AND ANY DEVIATIONS WILL BE CAUSE FOR REJECTION. REMOVE ALL BURRS AND SHARP EDGES									
TOLERANCES ON											
FRAC. ± 1/64 DEC. ± .005 ANGLES ± 1/2°											
		TYPE & TEMPER		HEATTREAT. SPEC.		DRAWN		CHECKED		FINAL APPROVAL	
						G.D.L.		@		R.L.	
		FINISH & SPEC. NO.		ELEC. DES. APP.		MECH. DES. APP.		TZ 179		A	