

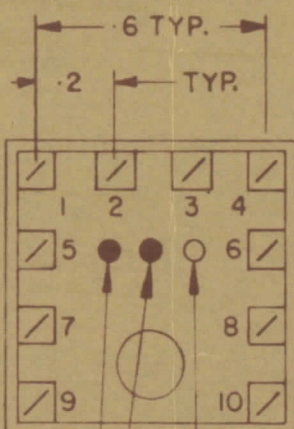
UNLESS OTHERWISE SPECIFIED, ALL DIMENSIONS ARE IN INCHES. DIMENSIONS IN PARENTHESES ARE IN MILLIMETERS. MAXIMUM ALLOWABLE TOLERANCES HAVE BEEN DETERMINED AND SPECIFICATIONS WILL BE TO BE FOR LOCATION, REMOVE ALL BURRS AND SHARP EDGES.		DIMENSIONS IN INCHES UNLESS OTHERWISE SPECIFIED.				
NO.	REV.	CHANGED FROM	DATE	BY	CHECKER	ENG. APP.
Ø		REL TO PROD.	SEPT 10/68		RPL	A.S.
A		REV PER CEMN	13 JAN 69	402	R	[Signature]

TT10005-41B A

NOTE:-
 1- COLOUR CODE INDICATES LAST TWO DIGITS AND LETTER IN TMC PART NO.
 2- * -INDICATES POSITION OF NAMEPLATE.

ASSEMBLY INSTRUCTIONS:-

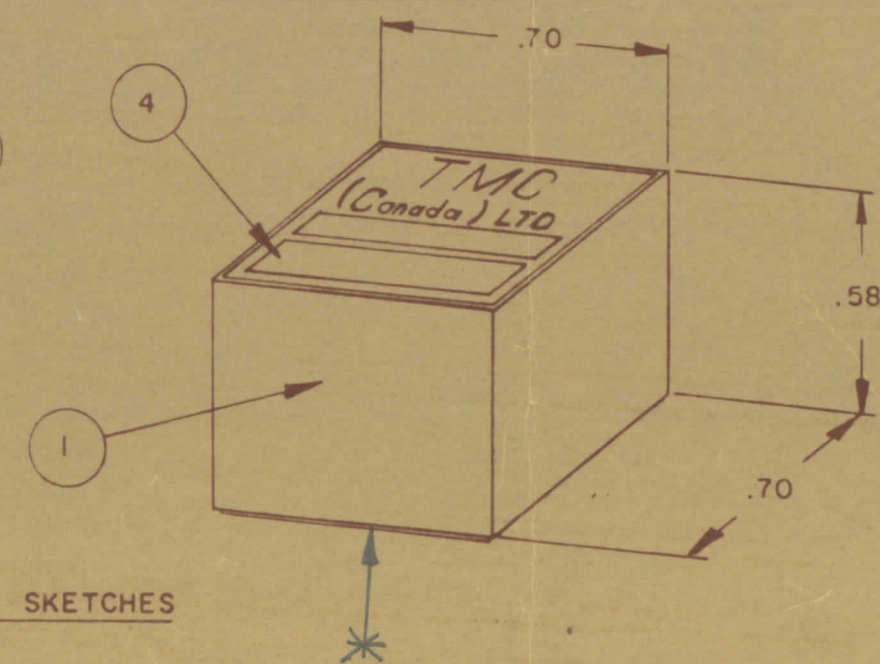
- WIND 6 TURNS OF ITEM 3 AS SHOWN IN SKETCH 1.
- WIND 2 TURNS OF ITEM 3 AS SHOWN IN SKETCH 2.
- WIND _____ TURNS OF ITEM _____ AS SHOWN IN SKETCH 3.
- DIP COIL IN ITEM 5 AND BAKE FOR 1/2 HR. AT 125°F.
- REMOVE 1 TURNS FROM THE PRIMARY IF NECESSARY TO OBTAIN THE FOLLOWING AT TEST FREQ. OF 25 MHz.
 - INDUCTANCE IN µH. 1.0 ± 0.1 OVER 6 TURNS
 - Q MINIMUM _____
- MAXIMUM NUMBER OF TURNS TO BE REMOVED 1
- MOUNT TRANSFORMER ON BASE & CONNECT WIRES TO CORRESPONDING PINS.
- INSTALL ITEM 7 & _____ BETWEEN PINS 1 & 4.
- INSTALL ITEM _____ & _____ BETWEEN PINS _____ & _____.
- INSTALL ITEM _____ BETWEEN PINS _____ & _____.
- POT TRANSFORMER USING ITEM 6 AS PER SPEC. S10149.
- COLOUR CODE BOTTOM OF TRANSFORMER YEL., BRN., BLK.
- INSTALL NAMEPLATE.



BOTTOM VIEW

FIRST DIGIT
 SECOND DIGIT
 LETTER (IF REQ'D)
 A - WHITE
 B - BLACK

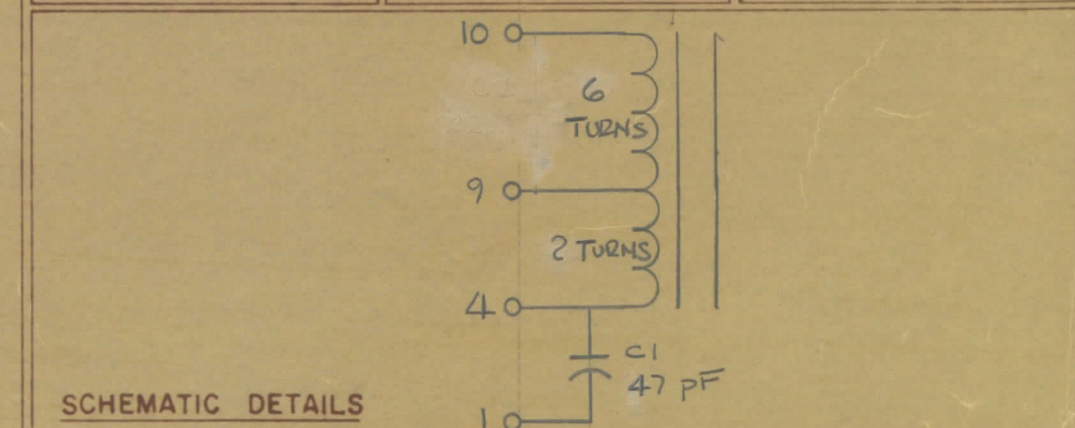
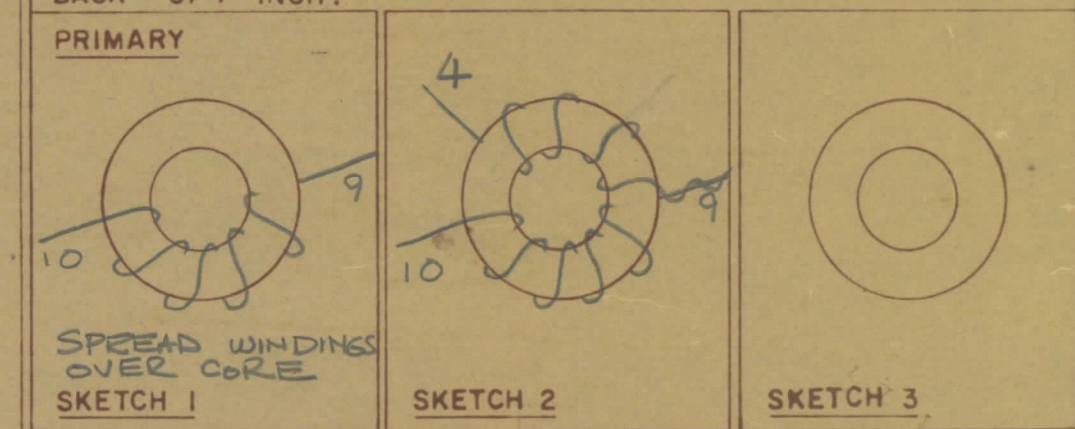
COLOUR CODE MARKING



TYPICAL FOR ALL SKETCHES

1	1	BPI0002-1	MODU - CON	
1	2	CI-10011-1-Q2	CORE	
AR	3	WI-123-28	WIRE MAGNET	
1	4	NP10157	NAMEPLATE	
AR	5	GL130	Q-DOPE	
AR	6	GL10005-3110 H	ENCAPSULANT	
1	7	CM111E470J1S	CAPACITOR, FIXED MICA.	CI
1	8			
	9			
	10			
	11			
	12			

DIRECTION OF WINDING TO BE CLOSELY FOLLOWED AS SHOWN IN SKETCHES. ALL LEADS TO BE 1 INCH LONG. TIN LEADS BACK 3/4 INCH.



TMC (Canada) LIMITED
 OTTAWA ONTARIO

TRANSFORMER RF,
 TUNED

DRW: RPL
 APP: A.S.
 DATE: SEPT 10/68

TT10005-41B A

TOLERANCES UNLESS OTHERWISE SPECIFIED		SCALE
DEC DIM	X = .05	DRILL PUNCH COMMERCIAL STOCK SIZES AND MANUFACTURERS TOLERANCES ARE NOT INCLUDED
FRA DIM	XX = .01	
ANGULAR DIM	XXX = .005	

TTRRE-4B	PROJECT NO	DATE
		SEPT 10/68