

IF IT IS FOUND DESIRABLE TO CHANGE ANY TOLERANCE OR OTHER DETAIL SPECIFIED ON THIS DRAWING NOTIFY THE PURCHASER PROMPTLY

DIMENSIONS IN INCHES UNLESS OTHERWISE SPECIFIED

MAXIMUM ALLOWABLE TOLERANCES HAVE BEEN DETERMINED AND DEVIATIONS WILL BE CAUSE FOR REJECTION REMOVE ALL BURRS AND SHARP EDGES

| ISSUE | ITEM | CHANGED FROM | DATE | CN NO | DRAFTS | CHECKER | ENG APP |
|-------|------|------------------|-----------|-------|--------|---------|---------|
| 0 | | REL. TO. PROD. | JAN 30/68 | | RPL | | |
| A | | REV. AS PER CEMN | DEC 7/72 | 1208 | PVM | | |

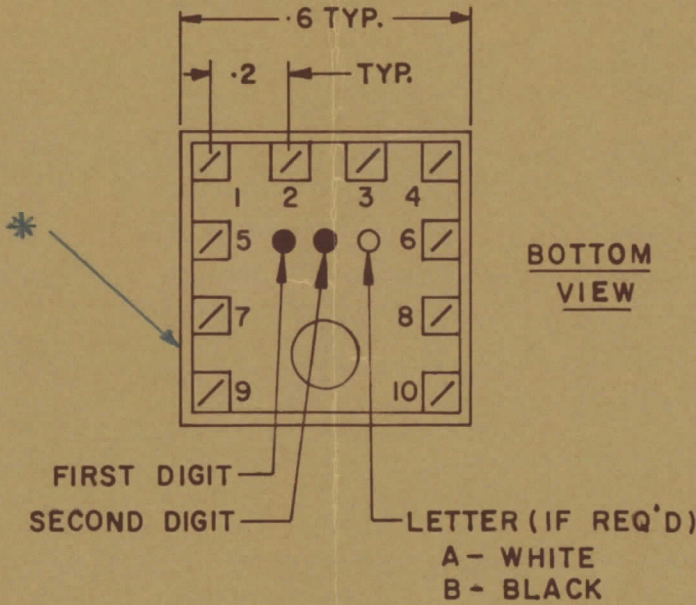
TT10002-21A A

NOTE:-

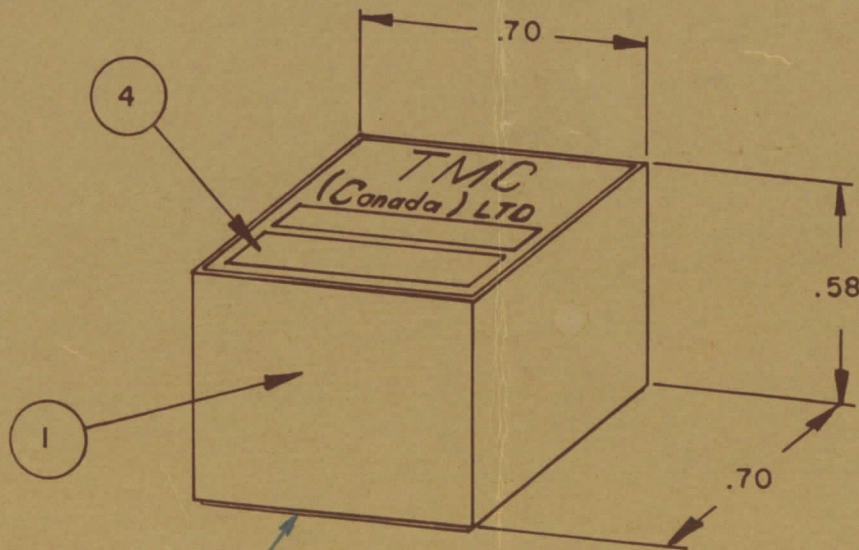
- 1- COLOUR CODE INDICATES LAST TWO DIGITS AND LETTER IN TMC PART NO.
- 2- * -INDICATES POSITION OF NAMEPLATE.

ASSEMBLY INSTRUCTIONS:-

1. WIND 17 TURNS OF ITEM 3 AS SHOWN IN SKETCH 1.
2. WIND 4 TURNS OF ITEM 7 AS SHOWN IN SKETCH 2.
3. WIND TURNS OF ITEM AS SHOWN IN SKETCH 3.
4. DIP COIL IN ITEM 5 AND BAKE FOR 1/2 HR. AT 125 °F.
5. REMOVE 1 TURNS FROM THE PRIMARY IF NECESSARY TO OBTAIN THE FOLLOWING AT TEST FREQ. OF 2.5 MHZ.
 - a) INDUCTANCE IN μ H. 15 \pm 1.5
 - b) Q MINIMUM
6. MAXIMUM NUMBER OF TURNS TO BE REMOVED 1
7. MOUNT TRANSFORMER ON BASE & CONNECT WIRES TO CORRESPONDING PINS.
8. INSTALL ITEM 8 BETWEEN PINS 8 & .
9. INSTALL ITEM 8 BETWEEN PINS 8 & .
10. INSTALL ITEM 8 BETWEEN PINS 9 & 10.
11. POT TRANSFORMER USING ITEM 6 AS PER SPEC. S10149.
12. COLOUR CODE BOTTOM OF TRANSFORMER RED, BRN, WHT.
13. INSTALL NAMEPLATE.



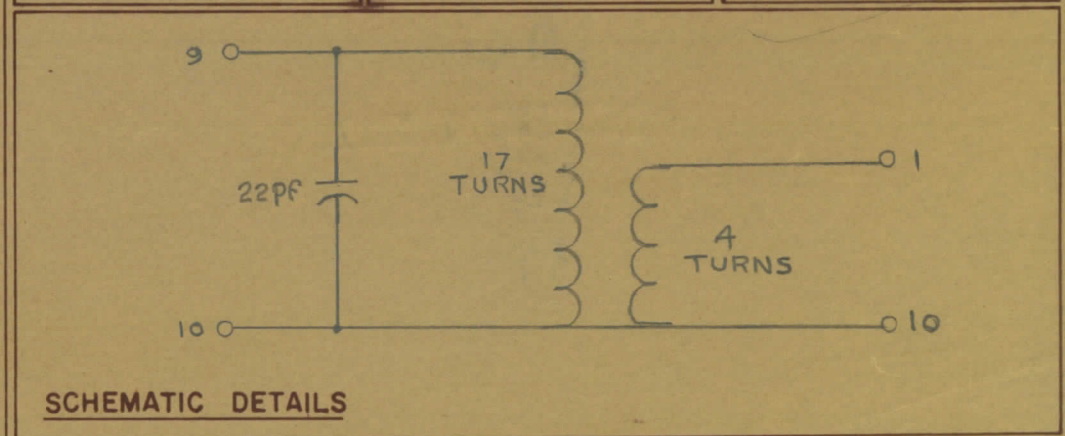
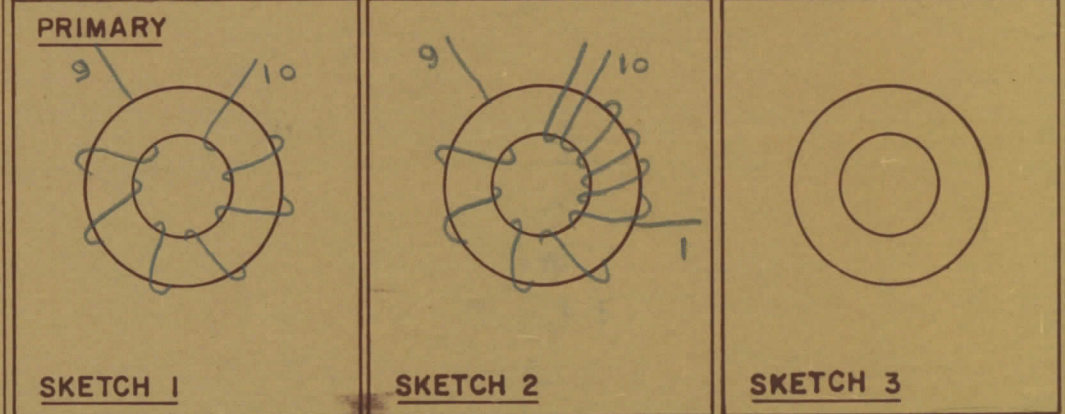
COLOUR CODE MARKING



TYPICAL FOR ALL SKETCHES

| REQ | ITEM | PART NO | DESCRIPTION | SYMBOL |
|-----|------|-----------------|--------------------|--------|
| 1 | 1 | BPI0011 | COIL CASE ASSEMBLY | |
| 1 | 2 | CI-10011-1-Q1 | CORE | |
| AR | 3 | WI-123-28 | WIRE MAGNET | |
| 1 | 4 | NP 10157 | NAMEPLATE | |
| AR | 5 | GL 130 | Q-DOPE | |
| AR | 6 | GL 10005-3110 H | ENCAPSULANT | |
| AR | 7 | WI-122-30 | WIRE MAGNET | |
| 1 | 8 | CK05BX220K | CAPACITOR, FIXED | |
| | 9 | | | |
| | 10 | | | |
| | 11 | | | |
| | 12 | | | |

—: DIRECTION OF WINDING TO BE CLOSELY FOLLOWED AS SHOWN IN SKETCHES. ALL LEADS TO BE 1 INCH LONG. TIN LEADS BACK 3/4 INCH.



| | | | |
|------------------|--|--|------------------------------------|
| STOCK SIZE | | TMC (Canada) LIMITED OTTAWA ONTARIO | |
| MATERIAL | | TRANSFORMER RF, | |
| WEIGHT PER PC | | TUNED. | |
| TYPE & TEMPER | | E.T. DRAWN | <i>[Signature]</i> ELEC DES APP |
| HEAT TREAT SPEC | | RPL CHECKED | <i>[Signature]</i> MECH DES APP |
| FINISH & SPEC NO | | FINAL APPROVAL | |
| | | TT10002-21A A | |

| TOLERANCES UNLESS OTHERWISE SPECIFIED | SCALE |
|---------------------------------------|-------------|
| ALL OTHERS | |
| DEC DIM | X = .05 |
| FRAC DIM | XX = .01 |
| ANGULAR DIM | .XXX = .005 |

| | | | |
|-----------|------------|---------|-----------|
| MODEL | PROJECT NO | ASSY NO | DATE |
| TTRR(2A)D | 067/68 | | 29 JAN 68 |

USED ON