

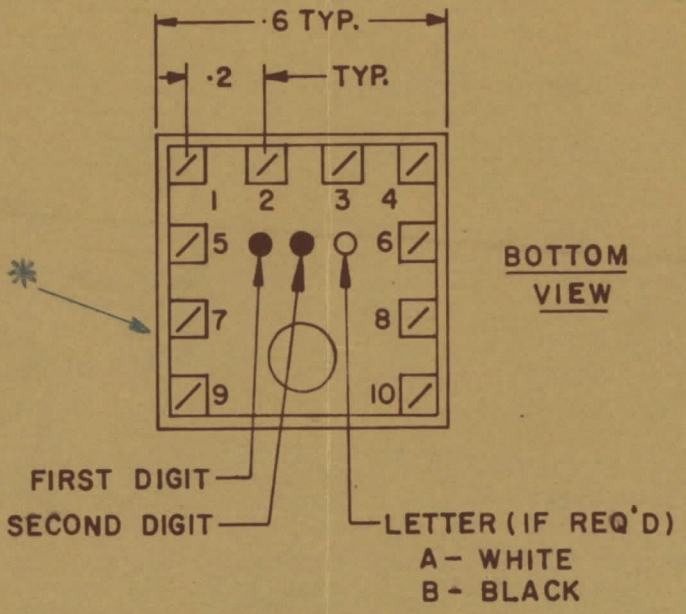
IF IT IS FOUND DESIRABLE TO CHANGE ANY TOLERANCE OR OTHER DETAIL SPECIFIED ON THIS DRAWING NOTIFY THE PURCHASER PROMPTLY				DIMENSIONS IN INCHES UNLESS OTHERWISE SPECIFIED			
MAXIMUM ALLOWABLE TOLERANCES HAVE BEEN DETERMINED AND DEVIATIONS WILL BE CAUSE FOR REJECTION REMOVE ALL BURRS AND SHARP EDGES				OTHERWISE SPECIFIED			
ISSUE	ITEM	CHANGED FROM	DATE	CN NO	DRAFTS	CHECKER	ENG APP.
Ø		REL. TO PROD.	JAN 30/68		RPL		<i>[Signature]</i>
A		REV AS PER CEMN	DEC 3/72	1208	PVM		<i>[Signature]</i>

TT10002-11B A

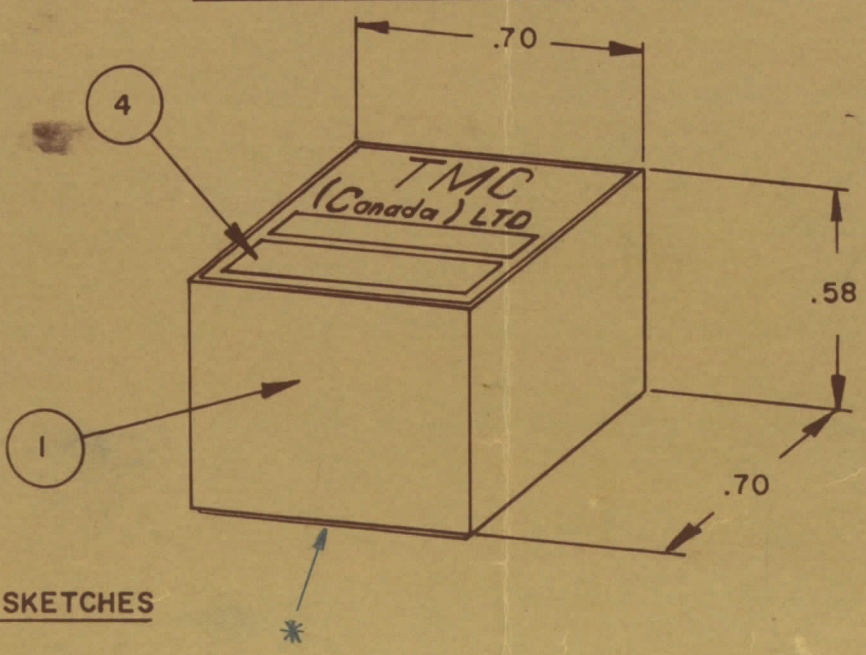
**NOTE:-**  
 1- COLOUR CODE INDICATES LAST TWO DIGITS AND LETTER IN TMC PART NO.  
 2- \* -INDICATES POSITION OF NAMEPLATE.

**ASSEMBLY INSTRUCTIONS:-**

- WIND 25 TURNS OF ITEM 3 AS SHOWN IN SKETCH 1.
- WIND 5 TURNS OF ITEM 9 AS SHOWN IN SKETCH 2.
- WIND     TURNS OF ITEM     AS SHOWN IN SKETCH 3.
- DIP COIL IN ITEM 5 AND BAKE FOR 1/2 HR. AT 125 °F.
- REMOVE 1 TURNS FROM THE PRIMARY IF NECESSARY TO OBTAIN THE FOLLOWING AT TEST FREQ. OF 2.5 MHZ.
  - INDUCTANCE IN  $\mu$ H. 30  $\pm$  3.
  - Q MINIMUM    .
- MAXIMUM NUMBER OF TURNS TO BE REMOVED 1.
- MOUNT TRANSFORMER ON BASE & CONNECT WIRES TO CORRESPONDING PINS.
- INSTALL ITEM 7 & 8 BETWEEN PINS 9 & 10.
- INSTALL ITEM     &     BETWEEN PINS     &    .
- INSTALL ITEM     BETWEEN PINS     &    .
- POT TRANSFORMER USING ITEM 6 AS PER SPEC. S10149.
- COLOUR CODE BOTTOM OF TRANSFORMER BRN, BRN, BLK.
- INSTALL NAMEPLATE.



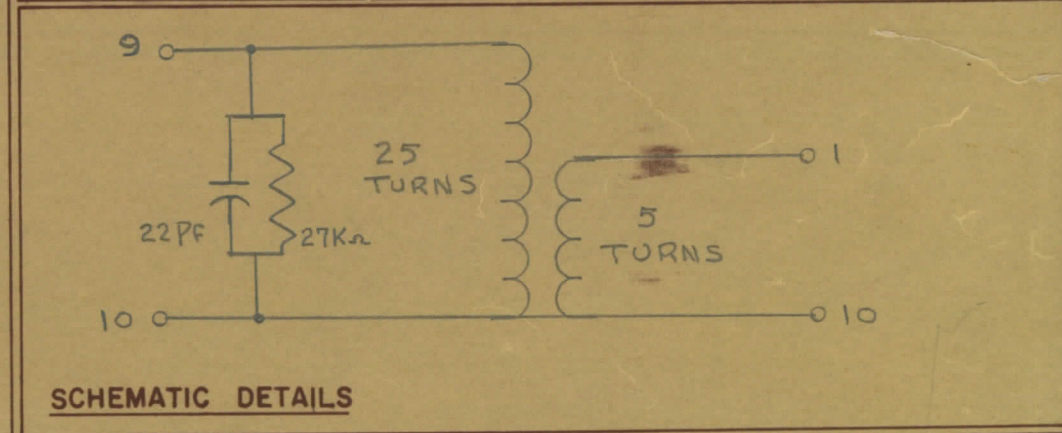
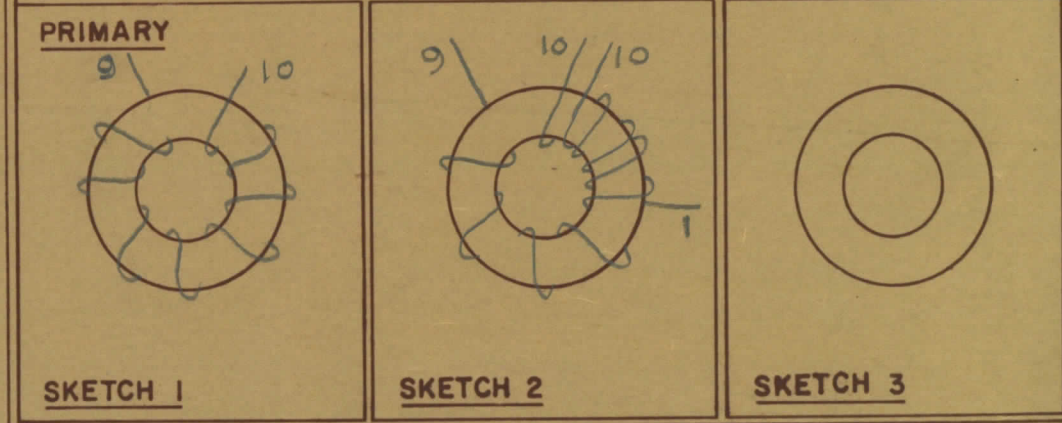
**COLOUR CODE MARKING**



TYPICAL FOR ALL SKETCHES

REQ	ITEM	PART NO.	DESCRIPTION	SYMBOL
1	1	BPI0011	COIL CASE ASSEMBLY	
1	2	CI-10011-1-Q1	CORE	
AR	3	WI-123-28	WIRE MAGNET	
1	4	NP 10157	NAMEPLATE	
AR	5	GL 130	Q-DOPE	
AR	6	GL10005-3110 H	ENCAPSULANT	
1	7	CK05BX220K	CAPACITOR, FIXED	
1	8	RC07GF273J	RESISTOR, FIXED	
AR	9	WI-122-30	WIRE MAGNET	
	10			
	11			
	12			

DIRECTION OF WINDING TO BE CLOSELY FOLLOWED AS SHOWN IN SKETCHES. ALL LEADS TO BE 1 INCH LONG. TIN LEADS BACK 3/4 INCH.



STOCK SIZE		TMC (Canada) LIMITED OTTAWA ONTARIO	
MATERIAL		TRANSFORMER RF,	
WEIGHT PER PC		TUNED	
TYPE & TEMPER		E.T.	<i>[Signature]</i>
HEAT TREAT SPEC		DRAWN	ELEC DES APP
FINISH & SPEC NO		MECH DES APP	FINAL APPROVAL
		RPL	<i>[Signature]</i>
		CHECKED	
		TT 10002-11B A	

TOLERANCES UNLESS OTHERWISE SPECIFIED	SCALE	DRILL, PUNCH, COMMERCIAL STOCK SIZES AND MANUFACTURERS TOLERANCES ARE NOT INCLUDED.
ALL OTHERS	DEC DIM = 1/64 FRAC DIM = 64 ANGULAR DIM = 0°30'	.X = .05 .XX = .01 .XXX = .005

MODEL	PROJECT NO	ASSY NO	DATE
TTRR(1B)D	067/68		29 JAN 68
USED ON			