

IF IT IS FOUND DESIRABLE TO CHANGE ANY TOLERANCE OR OTHER DETAIL SPECIFIED ON THIS DRAWING NOTIFY THE PURCHASER PROMPTLY

MAXIMUM ALLOWABLE TOLERANCES HAVE BEEN DETERMINED AND DEVIATIONS WILL BE CAUSE FOR REJECTION REMOVE ALL BURRS AND SHARP EDGES

DIMENSIONS IN INCHES UNLESS OTHERWISE SPECIFIED

ISSUE	ITEM	CHANGED FROM	DATE	CN NO	DRAFTS	CHECKER	ENG APP
0		REL TO PROD.	JAN 30/68		RPL		<i>[Signature]</i>
A		REV. AS PER CEMN	DEC 7/72	1208	PJM		<i>[Signature]</i>

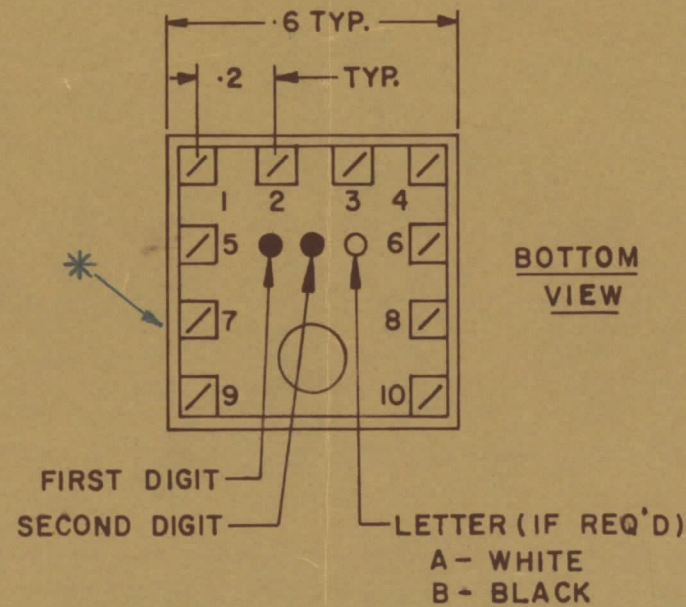
TT10002-11A A

**NOTE:-**

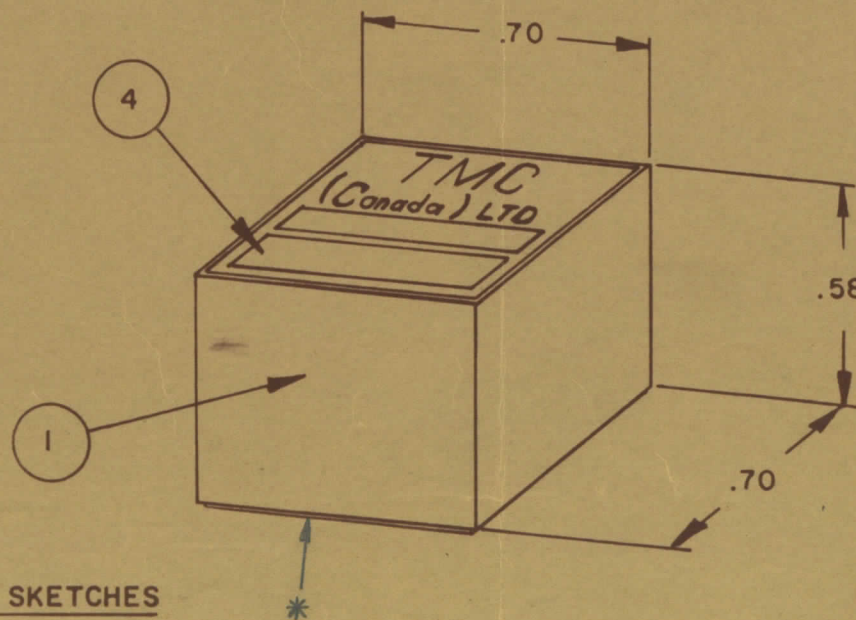
- 1- COLOUR CODE INDICATES LAST TWO DIGITS AND LETTER IN TMC PART NO.
- 2- \* -INDICATES POSITION OF NAMEPLATE.

**ASSEMBLY INSTRUCTIONS:-**

1. WIND 35 TURNS OF ITEM 3 AS SHOWN IN SKETCH 1.
2. WIND 7 TURNS OF ITEM 7 AS SHOWN IN SKETCH 2.
3. WIND      TURNS OF ITEM      AS SHOWN IN SKETCH 3.
4. DIP COIL IN ITEM 5 AND BAKE FOR 1/2 HR. AT 125 OF.
5. REMOVE 1 TURNS FROM THE PRIMARY IF NECESSARY TO OBTAIN THE FOLLOWING AT TEST FREQ. OF 2.5 MHZ.
  - a) INDUCTANCE IN  $\mu$ H. 65  $\pm$  4.
  - b) Q MINIMUM     .
6. MAXIMUM NUMBER OF TURNS TO BE REMOVED 1.
7. MOUNT TRANSFORMER ON BASE & CONNECT WIRES TO CORRESPONDING PINS.
8. INSTALL ITEM 3 & 9 BETWEEN PINS 9 & 10.
9. INSTALL ITEM      &      BETWEEN PINS      &     .
10. INSTALL ITEM      BETWEEN PINS      &     .
11. POT TRANSFORMER USING ITEM 6 AS PER SPEC. S 10149.
12. COLOUR CODE BOTTOM OF TRANSFORMER BRN, BRN, WHT.
13. INSTALL NAMEPLATE.



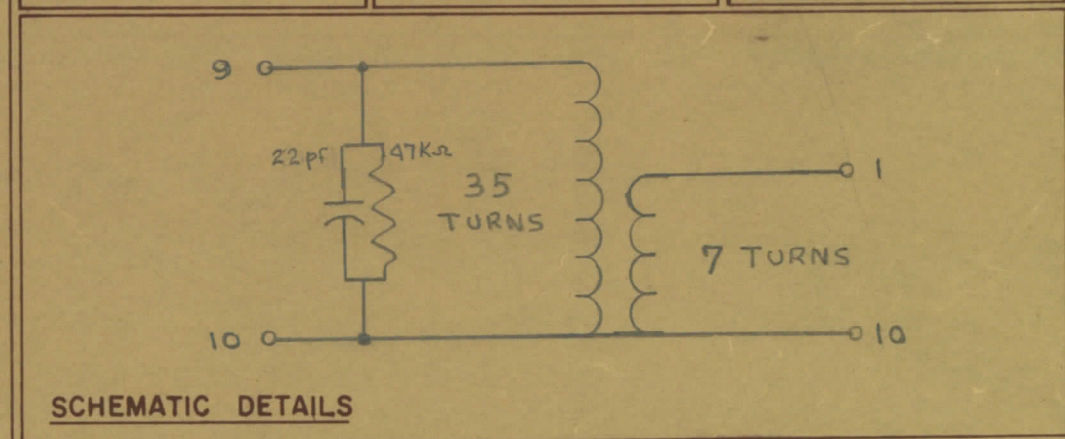
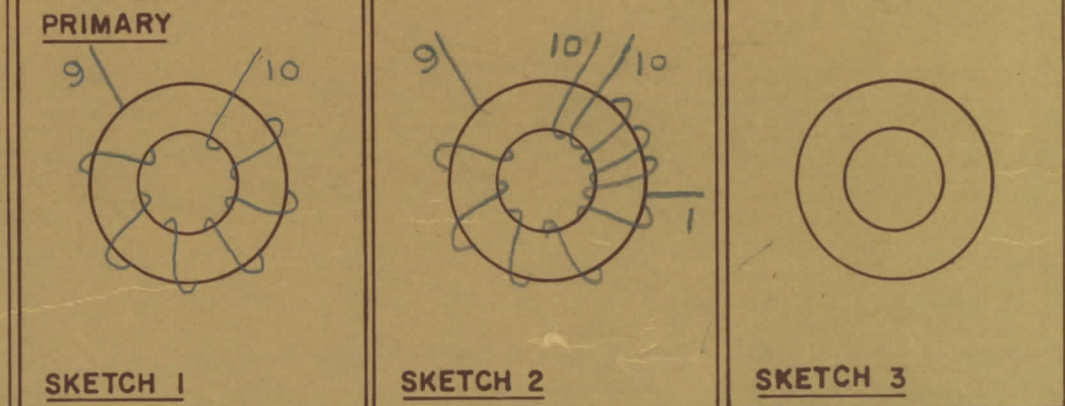
**COLOUR CODE MARKING**



TYPICAL FOR ALL SKETCHES

REQ.	ITEM	PART NO.	DESCRIPTION	SYMBOL
1	1	BPI0011	COIL CASE ASSEMBLY	
1	2	CI-10011-1-Q1	CORE	
AR	3	WI-123-28	WIRE MAGNET	
1	4	NP 10157	NAMEPLATE	
AR	5	GL 130	Q-DOPE	
AR	6	GL 10005-3110 H	ENCAPSULANT	
AR	7	WI-122-30	WIRE MAGNET	
1	8	RC07GF473J	RESISTOR, FIXED	
1	9	CK05BX220K	CAPACITOR, FIXED	
	10			
	11			
	12			

DIRECTION OF WINDING TO BE CLOSELY FOLLOWED AS SHOWN IN SKETCHES. ALL LEADS TO BE 1 INCH LONG. TIN LEADS BACK 3/4 INCH.



STOCK SIZE		TMC (Canada) LIMITED OTTAWA ONTARIO	
MATERIAL		TRANSFORMER RF,	
WEIGHT PER PC		TUNED	
TYPE & TEMPER		E.T.	<i>[Signature]</i>
HEAT TREAT SPEC		DRAWN	ELEC DES APP
FINISH & SPEC. NO		RPL	MECH DES APP
		CHECKED	FINAL APPROVAL
		<i>[Signature]</i>	
		TT 10002-11A A	

TOLERANCES UNLESS OTHERWISE SPECIFIED	SCALE
ALL OTHERS	DRILL, PUNCH, COMMERCIAL STOCK SIZES AND MANUFACTURERS TOLERANCES ARE NOT INCLUDED
DEC DIM	X = .05
FRAC DIM	XX = .01
ANGULAR DIM	XXX = .005

MODEL	TTRR (1A) D	PROJECT NO	067/68	ASSY. NO		DATE	29 JAN 68
USED ON							