

THE CONTENTS OF THIS DRAWING ARE THE EXCLUSIVE PROPERTY OF THE TECHNICAL MATERIEL CORP. ITS UNAUTHORIZED USE OR REPRODUCTION IN WHOLE OR IN PART IS STRICTLY FORBIDDEN.

REQ. PER UNIT

MODEL

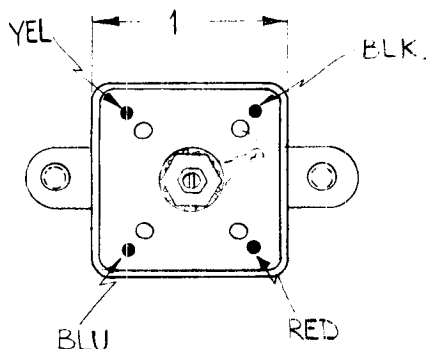
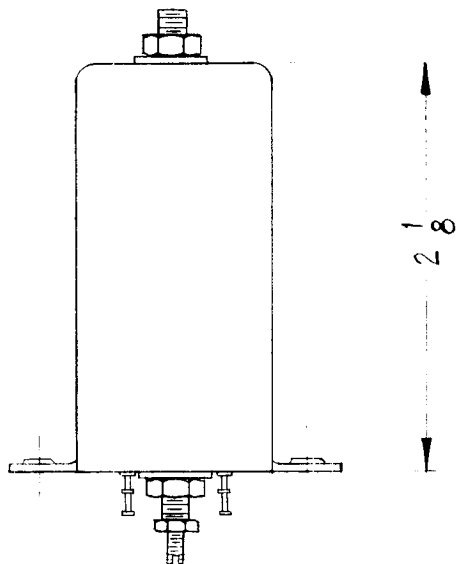
USED ON

ASS'Y. NO.

DATE

7-26-62

TT-163



MODEL	REQ	FUNCTION	OPER. FREQ	SYMBOL
HFA-1	2		250 KC	T7000, 7004

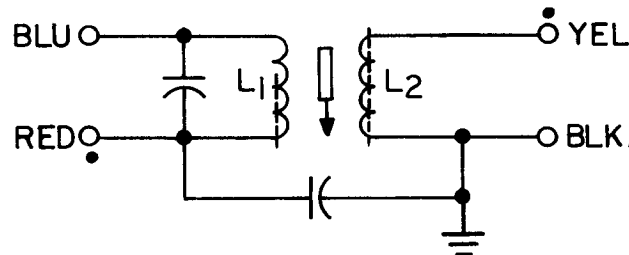
ELECTRICAL SPEC

PRIMARY                      SECONDARY  
 IND =  $610 \mu h \pm 10\%$       IND =  $.3 \mu h \pm 10\%$   
 Q = 55 OR GREATER      Q = 60 OR GREATER  
 TEST FREQ = 700 KC      TEST FREQ = 25 MC

MECHANICAL SPEC

CASE - ALUMINUM  
 CASE FINISH - S404 YEL. BRIDITE  
 TERM. BOARD - PHENOLIC

• INDICATES START OF WINDING.



SCHEMATIC DIAGRAM

REQ.	ITEM	PART NO.	DESCRIPTION			SYMBOL
			THE TECHNICAL MATERIEL CORP. MAMARONECK, NEW YORK			
			STOCK SIZE			
			TRANSFORMER, RF TUNED (250 KC).			
			MATERIAL			
SYM	DESCRIPTION	DATE	CH. NO.	DRAFTS	CHECKER	ENG. APP.
UNLESS OTHERWISE SPECIFIED: DIMENSIONS ARE IN INCHES. TOLERANCES ON FRAC. $\pm 1/64$ DEC. $\pm .005$ ANGLES $\pm 1/2^\circ$		SCALE: DO NOT SCALE (2A-2325)				
		MAXIMUM ALLOWABLE TOLERANCES HAVE BEEN DETERMINED AND ANY DEVIATIONS WILL BE CAUSE FOR REJECTION. REMOVE ALL BURRS AND SHARP EDGES				
	TYPE & TEMPER	HEATTREAT. SPEC.	DRAWN	CHECKED	FINAL APPROVAL	
			<i>M. U. F.</i>		<i>BP</i>	
	FINISH & SPEC. NO.	ELEC. DES. APP.	MECH. DES. APP.	TT-163		
			<i>A. R. J.</i>			