

THE CONTENTS OF THIS DRAWING ARE THE EXCLUSIVE PROPERTY OF THE TECHNICAL MATERIEL CORP. ITS UNAUTHORIZED USE OR REPRODUCTION IN WHOLE OR IN PART IS STRICTLY FORBIDDEN.

REQ. PER UNIT

1

MODEL

HFR-1/N

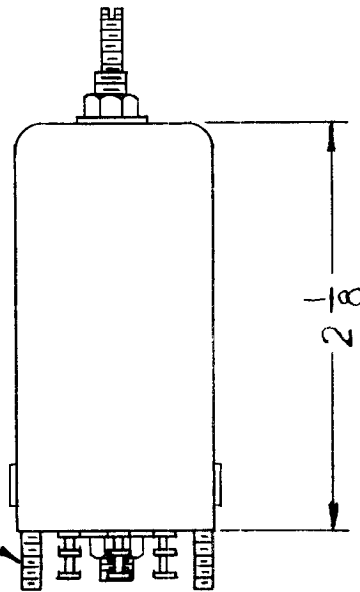
USED ON

ASS'Y. NO.

DATE

12-8-61

TT-165



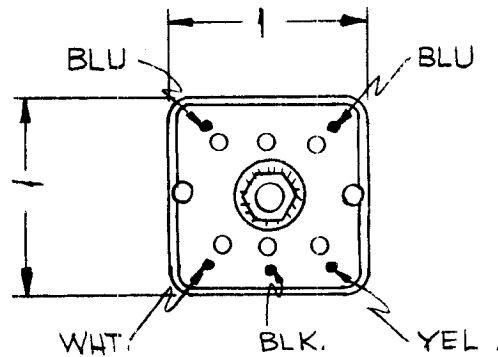
| MODEL   | REQ. | FUNCTION  | OPER. FREQ. | SYMBOL |
|---------|------|-----------|-------------|--------|
| HFR-1/N | 1    | RF TRANS. | 1.75MC      | TI 203 |

ELECTRICAL SPEC.

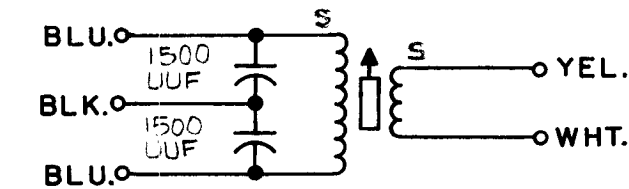
PRIMARY SECONDARY  
 IND. - 3.4-3.6 -  
 Q - 40 -  
 FREQ - 7.9 Mc -

MECHANICAL SPEC

CASE - ALUMINUM  
 FINISH  
 TERM. BD. TYPE



SCHEMATIC DIAGRAM



S - INDICATES START OF WINDING

| D  |                    |                |         |        |         |   | REQ.               | ITEM | PART NO.        | QUANTITY          | DESCRIPTION  | SYMBOL         |    |
|--|--------------------|----------------|---------|--------|---------|---|--------------------|------|-----------------|-------------------|--|----------------|----|
| C  |                    |                |         |        |         |   |                    |      |                 |                   | THE TECHNICAL MATERIEL CORP.<br>MAMARONECK, NEW YORK |                |    |
|  |                    |                |         |        |         |   |                    |      |                 |                   | TRANSFORMER, RF, OUTPUT                              |                |    |
| 1  | SYN T1203 WAST 203 | 3/26/62        |         |        |         |   |                    |      |                 |                   |  |                |    |
| SYM  | DESCRIPTION        | DATE           | CH. NO. | DRAFTS | CHECKER | ENG. APP.   | MATERIAL           |      |                 | DRAWN             | CHECKED  | FINAL APPROVAL |    |
| UNLESS OTHERWISE SPECIFIED:<br>DIMENSIONS ARE IN INCHES<br>TOLERANCES ON<br>FRAC. ± 1/64 DEC. ± .005 ANGLES ± 1/2° |                    | SCALE: 2A-2258 |         |        |         | MAXIMUM ALLOWABLE TOLERANCES HAVE BEEN DETERMINED AND ANY DEVIATIONS WILL BE CAUSE FOR REJECTION.<br>REMOVE ALL BURRS AND SHARP EDGES |                    |      | TYPE & TEMPER   | HEAT TREAT. SPEC. | ab   | RUZZO          | BP |
|  |                    |                |         |        |         |   | FINISH & SPEC. NO. |      | ELEC. DES. APP. |                   | MECH. DES. APP.                                      |                |    |
|  |                    |                |         |        |         |   |                    |      |                 |                   | TT-165   |                |    |