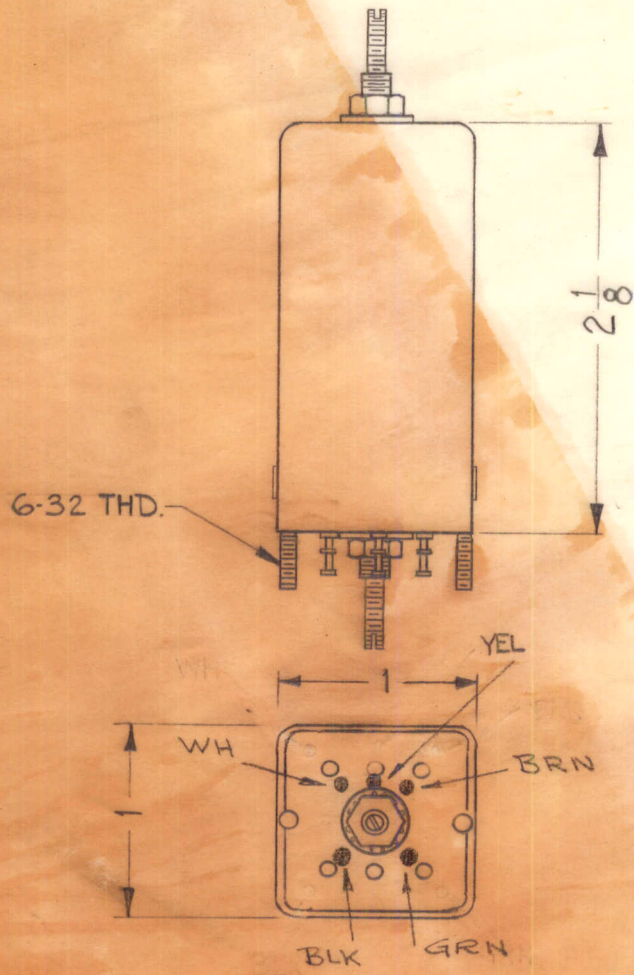


REQ. PER UNIT	USED ON			TT-156	A
	MODEL	ASSY. NO.	DATE		
			9-25-61		

MODEL	REQ.	FUNCTION	OPER FREQ.	SYMBOL
HFI-1	1	OUTPUT TRANSF.	250KC	T101
SBS-1	1	OUTPUT TRANSF.	250KC	T101

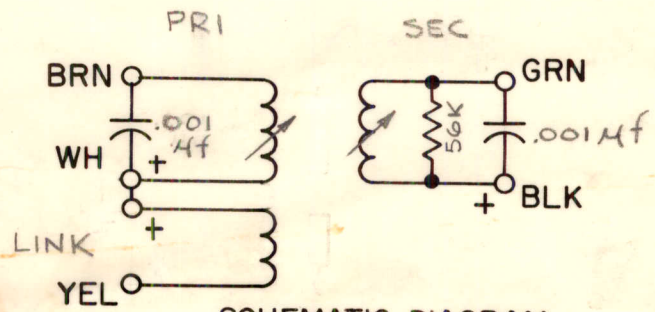


MECHANICAL SPEC.

CASE - ALUMINUM
CASE FINISH - NATURAL
TERM. BOARD - PHENOLIC

ELECTRICAL SPEC.

PRIMARY	SECONDARY	LINK
IND: 220-240 μ h	IND: 290-310 μ h	IND: 25 \pm 10%
Q: 40 OR GREATER	Q: 40 OR GREATER	Q: > 7.5
FREQ: 790 KC	FREQ: 790 KC	FREQ: 2.5 MC



SCHEMATIC DIAGRAM
+ INDICATES START OF WINDING

REQ.	ITEM	PART NO.	M. GELLMAN	DESCRIPTION	SYMBOL								
			THE TECHNICAL MATERIEL CORP. MAMARONECK, NEW YORK										
			TRANSFORMER, IF TUNED										
A	ELEC SPECS "Q" WAS 25-45	1019.65 17058	W.H.O.	82									
ISSUE	ITEM	CHANGED FROM	DATE	CH. NO.	DRAFTS	CHECKER	ENG. APP.	MATERIAL	TYPE & TEMPER	HEATTREAT. SPEC.	DRAWN	CHECKED	FINAL APPROVAL
TOLERANCES			SCALE: (2A-2152)										
DEC. DIM. \pm FRAC. DIM. \pm ANGULAR DIM. \pm			MAXIMUM ALLOWABLE TOLERANCES HAVE BEEN DETERMINED AND ANY DEVIATIONS WILL BE CAUSE FOR REJECTION. REMOVE ALL BURRS AND SHARP EDGES										
						FINISH & SPEC. NO.			ELEC. DES. APP			MECH. DES. APP	
									W.A.F.			R.P. 10/64	
									M.P.			R.J.L.	
												TT-156	
												A	