

IF IT IS FOUND DESIRABLE TO CHANGE ANY TOLERANCE OR OTHER DETAIL SPECIFIED ON THIS DRAWING NOTIFY THE PURCHASER PROMPTLY.

MAXIMUM ALLOWABLE TOLERANCES HAVE BEEN DETERMINED AND DEVIATIONS WILL BE CAUSE FOR REJECTION. REMOVE ALL BURRS AND SHARP EDGES.

DIMENSIONS IN INCHES UNLESS OTHERWISE SPECIFIED.

ISSUE	ITEM	CHANGED FROM	DATE	DN NO	DRAFTS	CHECKER	ENG APP
0							

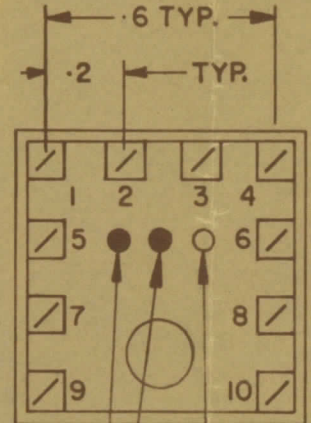
TT100

Band 3B  
T2

NOTE:-  
1- COLOUR CODE INDICATES LAST TWO DIGITS AND LETTER IN TMC PART NO.  
2- \* -INDICATES POSITION OF NAMEPLATE.

ASSEMBLY INSTRUCTIONS:-

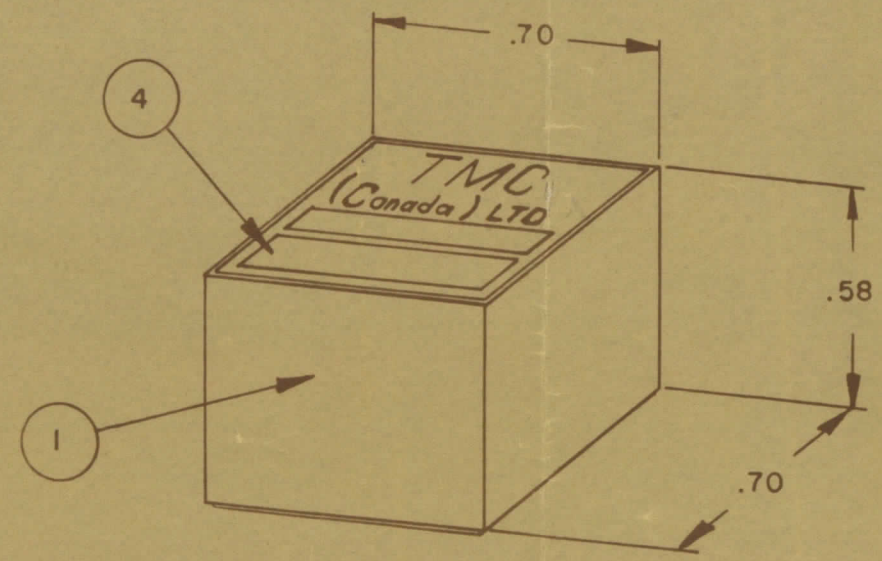
- WIND 11 TURNS OF ITEM 3 AS SHOWN IN SKETCH 1.
- WIND 4 TURNS OF ITEM 3 AS SHOWN IN SKETCH 2.
- WIND \_\_\_\_\_ TURNS OF ITEM \_\_\_\_\_ AS SHOWN IN SKETCH 3.
- DIP COIL IN ITEM 5 AND BAKE FOR \_\_\_\_\_ HR. AT \_\_\_\_\_ OF.
- REMOVE 3 TURNS FROM THE PRIMARY IF NECESSARY TO OBTAIN THE FOLLOWING AT TEST FREQ. OF 7.9 MHz.  
a) INDUCTANCE IN  $\mu H$ . 2.0 ± 0.2.  
b) Q MINIMUM \_\_\_\_\_.
- MAXIMUM NUMBER OF TURNS TO BE REMOVED 3.
- MOUNT TRANSFORMER ON BASE & CONNECT WIRES TO CORRESPONDING PINS.
- INSTALL ITEM 7 & \_\_\_\_\_ BETWEEN PINS 2 & 4.
- INSTALL ITEM 8 & \_\_\_\_\_ BETWEEN PINS 4 & 10.
- INSTALL ITEM \_\_\_\_\_ BETWEEN PINS \_\_\_\_\_ & \_\_\_\_\_.
- POT TRANSFORMER USING ITEM 6 AS PER SPEC. S10149.
- COLOUR CODE BOTTOM OF TRANSFORMER \_\_\_\_\_, \_\_\_\_\_, \_\_\_\_\_.
- INSTALL NAMEPLATE.



BOTTOM VIEW

FIRST DIGIT  
SECOND DIGIT  
LETTER (IF REQ'D)  
A - WHITE  
B - BLACK

COLOUR CODE MARKING

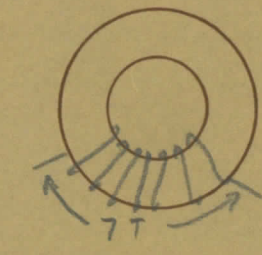


TYPICAL FOR ALL SKETCHES

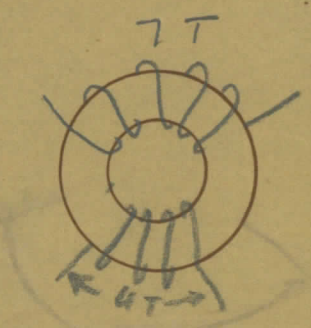
REQ	ITEM	PART NO	DESCRIPTION	QTY
I	1	BPI0002-1	MODU - CON	
I	2	CI-10011-Q2	CORE	
AR	3	WI-	WIRE MAGNET	
I	4	NP 10157	NAMEPLATE	
AR	5	GL 130	Q-DOPE	
AR	6	GL 10005-3110 H	ENCAPSULANT	
	7	<u>R0204F6825</u>		
	8	<u>CC 10014-3</u>		
	9			
	10			
	11			
	12			

-:DIRECTION OF WINDING TO BE CLOSELY FOLLOWED AS SHOWN IN SKETCHES. ALL LEADS TO BE 1 INCH LONG. TIN LEADS BACK 3/4 INCH.

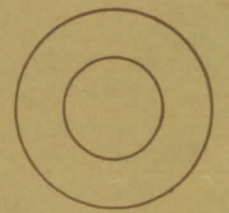
PRIMARY



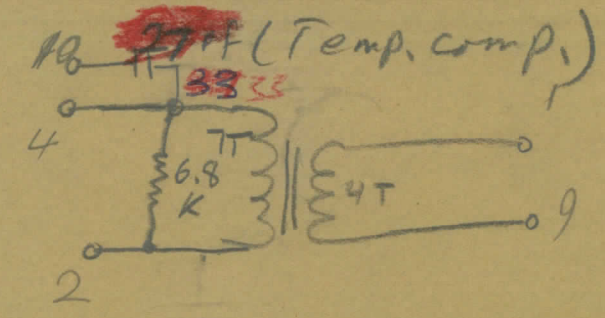
SKETCH 1



SKETCH 2



SKETCH 3



SCHEMATIC DETAILS

spread windings evenly over core

TOLERANCES UNLESS OTHERWISE SPECIFIED

ALL OTHERS	DEC DIM	FRAC DIM	ANGULAR DIM	SCALE	DRILL, PUNCH, COMMERCIAL STOCK	SIZES AND MANUFACTURERS	TOLERANCES ARE NOT INCLUDED
		$\frac{1}{64}$	$0^{\circ}30'$				

MODEL	PROJECT NO	ASSY NO	DATE

TMC (Canada) LIMITED OTTAWA ONTARIO			
TRANSFORMER RF, 3B			
TUNED			
STOCK SIZE			
MATERIAL	WEIGHT PER PC		
TYPE & TEMPER			
HEAT TREAT SPEC	CHECKED	ELEC DES APP	MECH DES APP
FINISH & SPEC NO			

T2

TT100