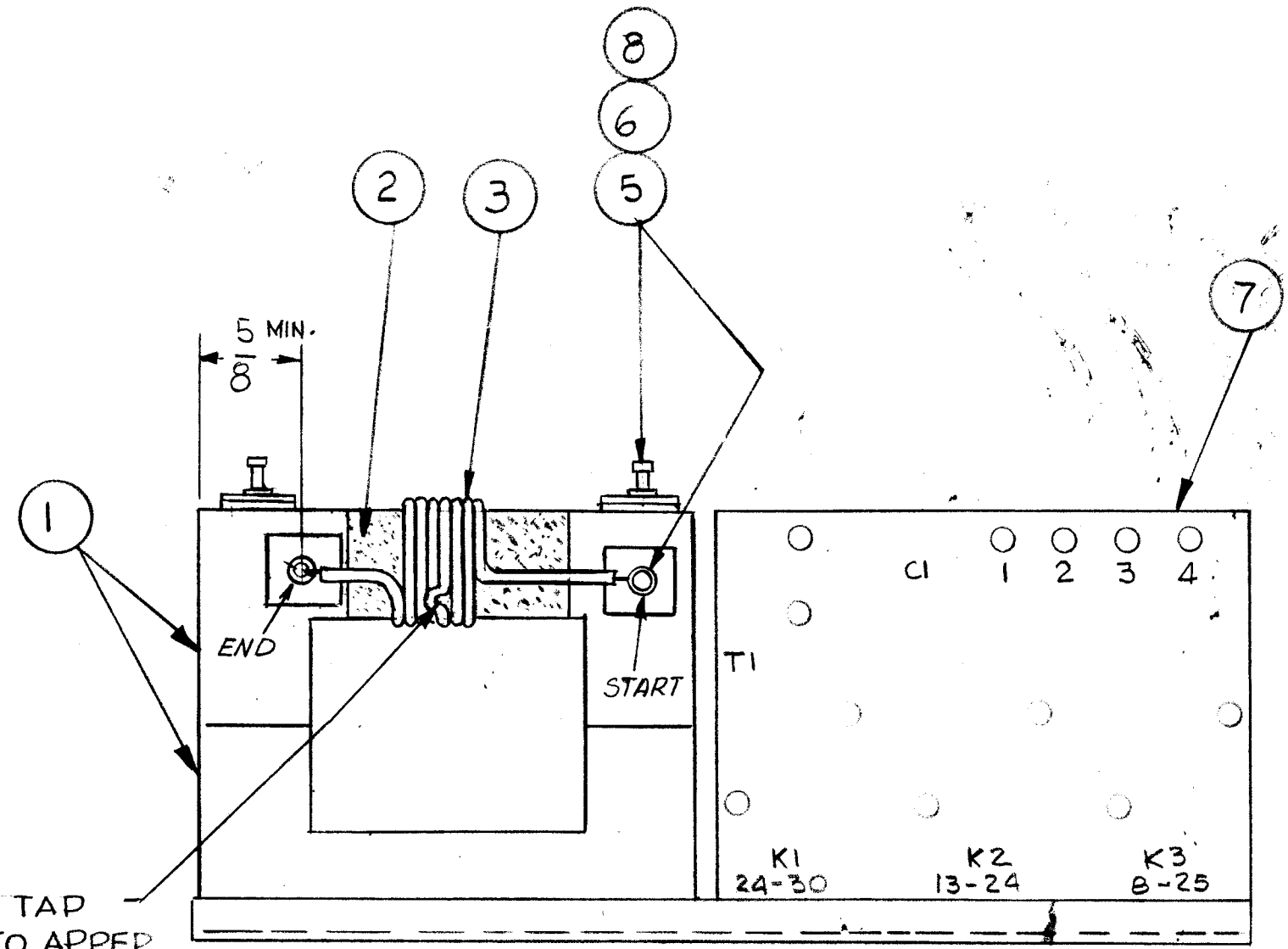


REVISIONS							
E.M.N. NO.	DRAFT	CHKD	ZONE	LTR	DESCRIPTION	DATE	APPROVED
	Q			Ø	ORIGINAL RELEASE FOR PRODUCTION	5/11/76	



- NOTES:
1. USING ITEM 4 JOIN ITEM 1 & 8 TOGETHER AS SHOWN.
 2. USING ITEM 6 FASTEN TO ITEM 1 WITH ITEM 4 AS SHOWN. ALLOW 24 HOURS TO CURE.
 - 3- WRAP 2 TURNS ITEM 2 AROUND ITEM 1 AS SHOWN.
 - 4- WIND 7 TURNS ITEM 3 TAPPED AT 3 TURNS. CLOCKWISE AS SHOWN.
 - 5- FASTEN ITEM 3 TO ITEM 6 WITH ITEM 5 AS SHOWN. $L = 19.5 \pm 10\%$ $Q = 220 \pm 10\%$

TAP TO UPPER AS SHOWN (NOTE 4)

REQ'D	ITEM	PART NUMBER	DESCRIPTION	SYM.
X	8	BS100	SOLDER, TIN ALLOY	
	7	MS6706	BRACKET MTG XFMR	
	4	PX1051-2	TERM. INSULATOR	
	4	PX1051-1	TERM. INSULATOR	
X	4	NOTMC NO	ADHESIVE (EASTMAN 910)	
X	3	W1123-20	WIRE ELEC. MAG.	
X	2	TA 108-5	TAPE	
	2	CI101-3Q1	CORE U	

1	KIT-417	AX 787
1	TLAA-1K	AX 787
QTY / UNIT	MODEL USED ON	ASS'Y NO.
APPLICATION		
	CODE	

NOTICE TO PERSONS RECEIVING THIS DRAWING
 THE TECHNICAL MATERIEL CORPORATION claims proprietary right in the material disclosed hereon. This drawing is issued in confidence for engineering information only and may not be reproduced or used to manufacture anything shown hereon without permission from THE TECHNICAL MATERIEL CORPORATION to the user. This drawing is loaned for mutual assistance and is subject to recall at any time.

UNLESS OTHERWISE SPECIFIED DIMENSIONS ARE IN INCHES AND INCLUDE CHEMICALLY APPLIED OR PLATED FINISHES

DECIMALS	FRACTIONS
.X ± .05	1/64
.XX ± .01	TOLS. ANGLES
.XXX ± .005	0° - 30'

MATERIAL FINISH

FINAL APPROVAL	DATE
<i>G.D.L.</i>	5/11/76
MECH. DES.	DATE
ELECT. DES.	DATE
CHECKED	DATE
DRAWN	DATE
<i>G.D.L.</i>	4-10-76

LIST OF MATERIAL
 THE TECHNICAL MATERIEL CORP.
 MAMARONECK, NEW YORK

XFMR, INTERSTAGE

SIZE	CODE IDENT. NO.	DWG NO.	ISSUE
B	82679	TR206	Ø
SCALE	SHEET		OF