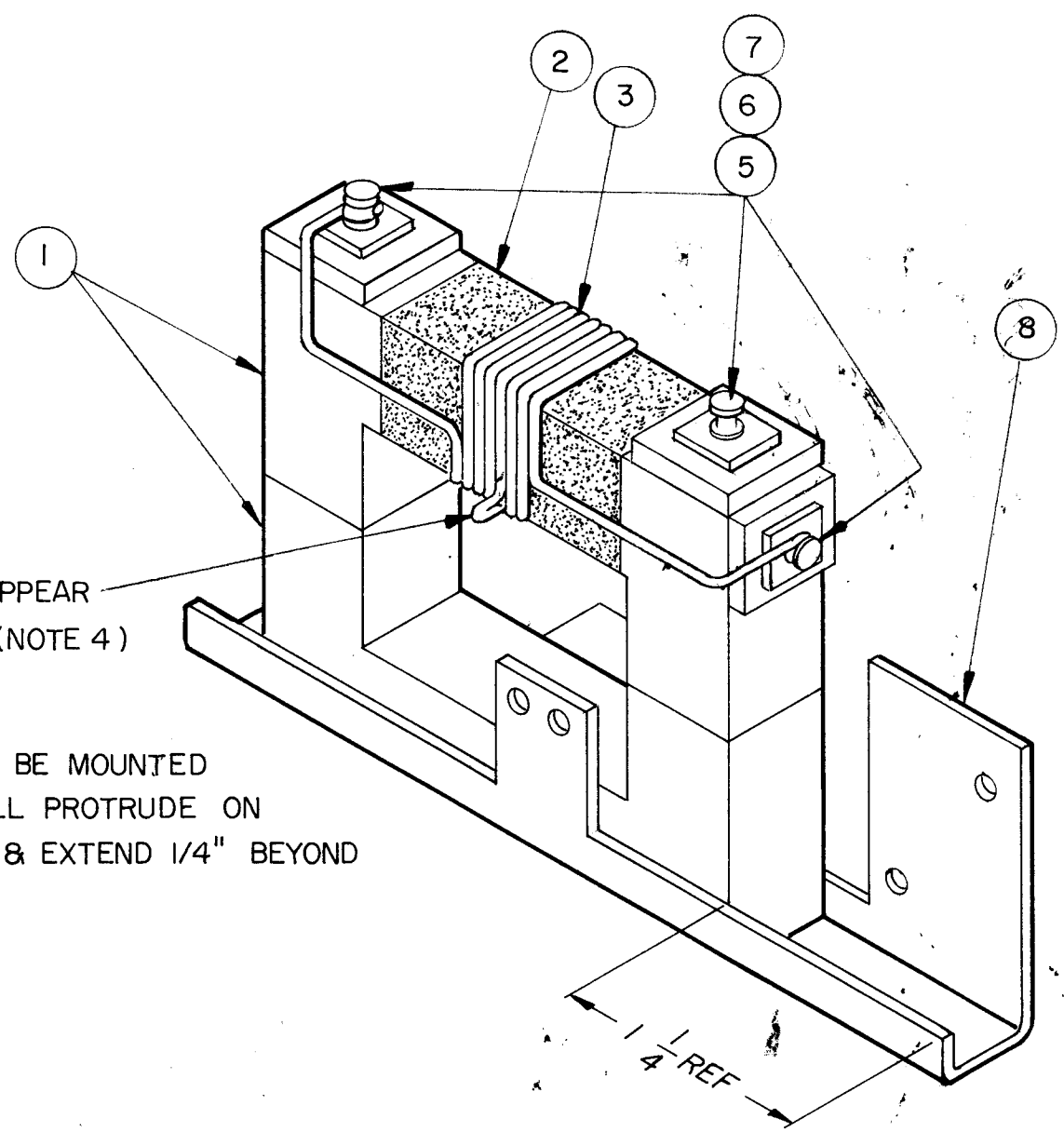


REVISIONS						
ZONE	LTR	DESCRIPTION	DATE	E.M.N.NO	DRAFT	CHKD APPD
	Ø	ORIG RELEASE FOR PROD	1/30/71		CV	
	A	ADD TERM. TO SIDE	4-21-72	20624	GE	CP CP



TAP TO APPEAR AS SHOWN (NOTE 4)

IT. 1 & 8 TO BE MOUNTED SO TAP WILL PROTRUDE ON THIS SIDE & EXTEND 1/4" BEYOND WINDING.

NOTES

1. USING ITEM 4 JOIN IT. 1 & 8 TOGETHER AS SHOWN.
2. USING ITEM 6, FASTEN TO ITEM 1 WITH ITEM 4 AS SHOWN, ALLOW 24 HOURS TO CURE.
3. WRAP 2 TURNS ITEM 2 AROUND ITEM 1 AS SHOWN.
4. WIND 7 TURNS ITEM 3, TAPPED AT 3 TURNS, CLOCKWISE AS SHOWN.
5. FASTEN IT. 3 TO IT. 6 WITH IT. 5 AS SHOWN.
L = 19.5 ± 10% Q = 220 ± 10%

REQ'D	ITEM	PART NUMBER	DESCRIPTION	SYM.
1	8	MS 6244	BRACKET, XFMR MTG.	
3	7	PX 1051-2	TERM. INSULATOR	
3	6	PX 1051-1	TERM. INSULATOR	
X	5	BS 100	SOLDER TIN ALLOY	
X	4	NO TMC NO.	ADHESIVE (EASTMAN 910)	
X	3	WI 123-20	WIRE ELECTRICAL MAG	
X	2	TA 108-5	TAPE	
2	1	CI 101-301	CORE U	

F.B. LIST OF MATERIAL

1	TLAAIK	A4909
QTY / UNIT	MODEL USED ON	ASS'Y NO.
APPLICATION		
CODE		

NOTICE TO PERSONS RECEIVING THIS DRAWING
 THE TECHNICAL MATERIEL CORPORATION claims proprietary right in the material disclosed hereon. This drawing is issued in confidence for engineering information only and may not be reproduced or used to manufacture anything shown hereon without permission from THE TECHNICAL MATERIEL CORPORATION to the user. This drawing is loaned for mutual assistance and is subject to recall at any time.

UNLESS OTHERWISE SPECIFIED DIMENSIONS ARE IN INCHES AND INCLUDE CHEMICALLY APPLIED OR PLATED FINISHES	
DECIMALS .X ± .05 .XX ± .01 .XXX ± .005	FRACTIONS 1/64 ANGLES 0° - 30'
MATERIAL	
FINISH	

FINAL APPROVAL <i>[Signature]</i>	DATE 11-30-71
MECH. DES.	DATE
ELECT. DES. <i>[Signature]</i>	DATE 11-30-71
CHECKED	DATE
DRAWN G. EVANGELIST	DATE 11/30/71

THE TECHNICAL MATERIEL CORP. MAMARONECK, NEW YORK			
XFMR, INTERSTAGE			
SIZE B	CODE IDENT. NO. 82679	DWG NO. TR 195	ISSUE A
SCALE N/T/S		SHEET OF	