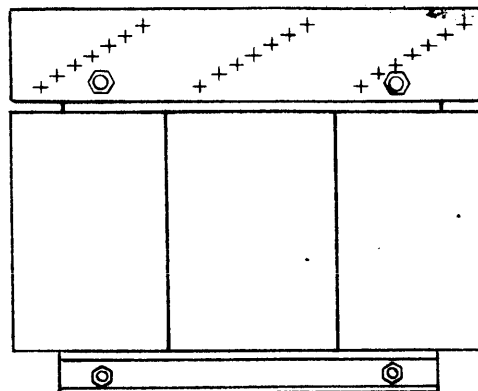
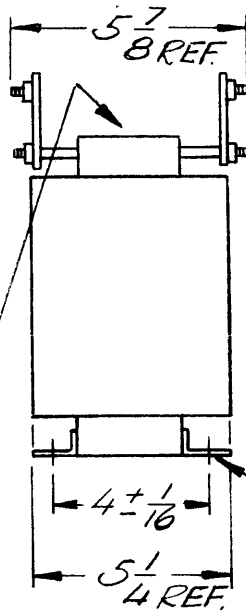
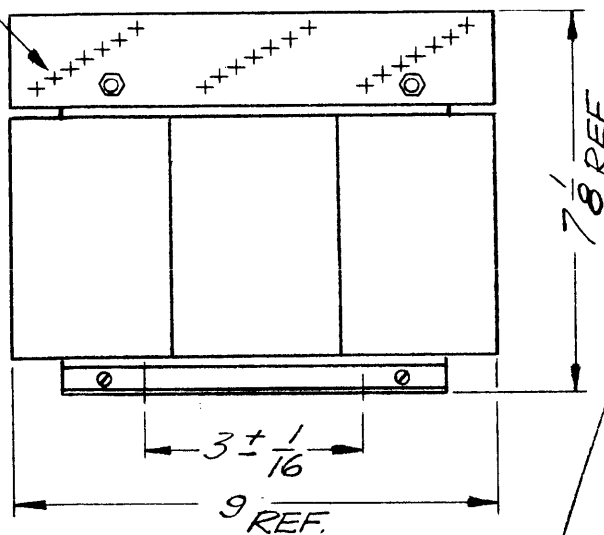
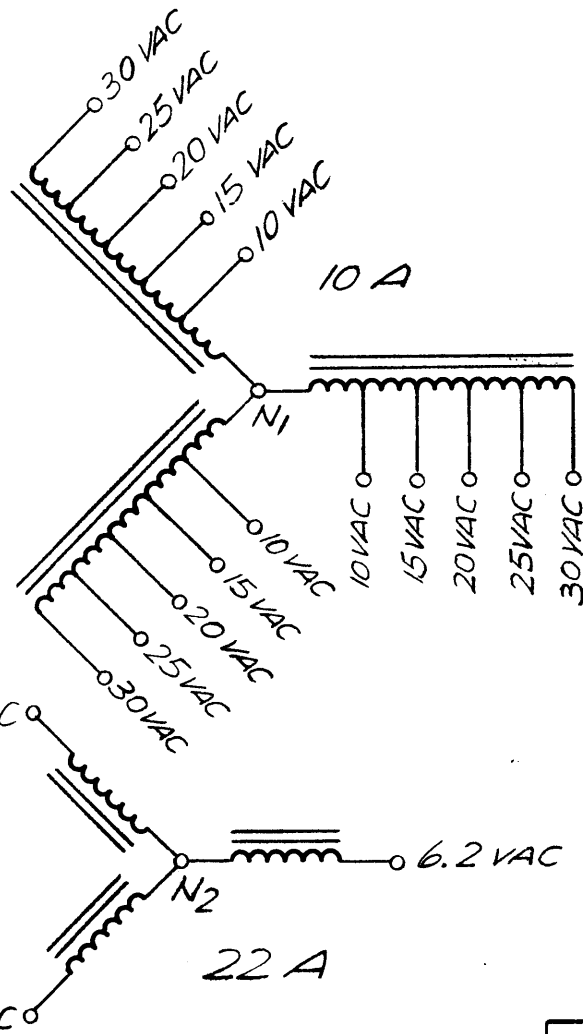
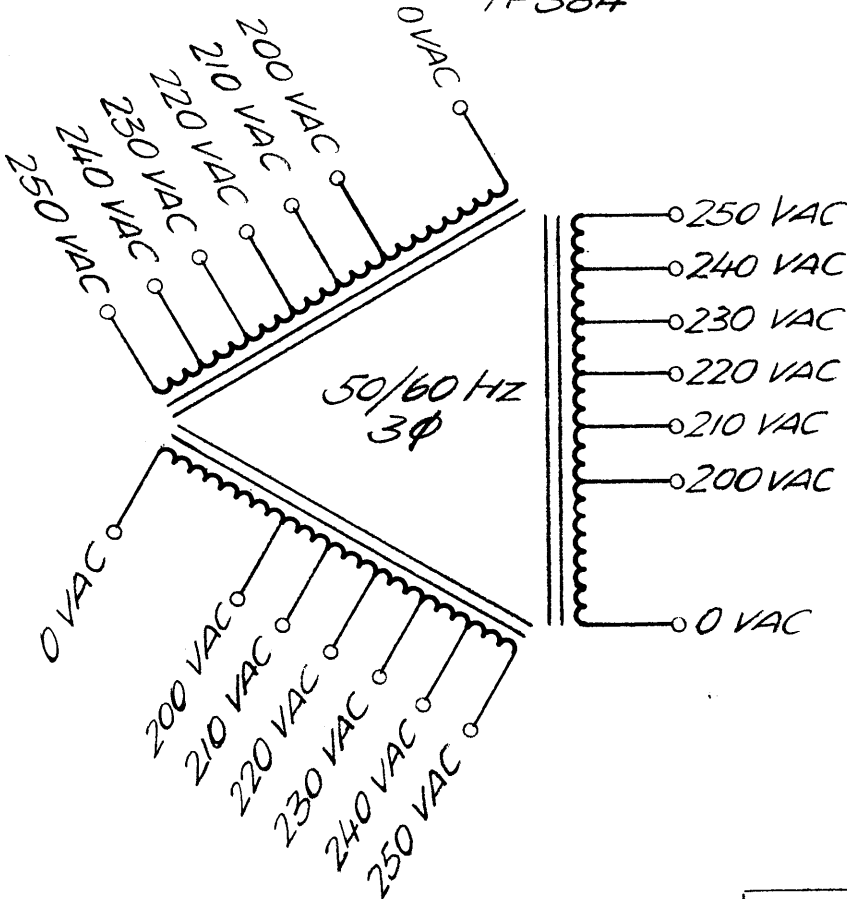


10-32 THD TERMINAL (41 REQ.)



THE TECHNICAL MATERIEL CORP.
MAMARONECK NEW YORK
TF 384



REVISIONS						
ZONE	LTR	DESCRIPTION	DATE	E.M.N.NO	DRAFT	CHKD
	X	EXP. RELEASE	1/8/70			
	Ø	ORIGINAL RELEASE	1/21/70			KD

ELECT. SPECS.

PRIMARY WINDING
VOLTAGE - 200 - 250 VAC
FREQUENCY - 50/60 HZ
PHASE - 3
SECONDARY WINDING # 1
VOLTAGE - 10 - 30 VAC
CURRENT - 10 AAC
SECONDARY WINDING # 2
VOLTAGE - 6.2 VAC
CURRENT - 22 AAC
INSULATION TEST - 1500 V RMS

MECH. SPECS

CASE - OPEN FRAME
FINISH - BLACK MATT EXCEPT TERMINALS
DIMENSIONS - SHOWN PICTORIALLY
TERMINALS - 10 - 32 THREADS

STAMPING

ACCORDING TO TMC SPEC. S-727 WHITE
GOTHIC LETTERING AND LINE WORK.
SCHEMATIC TO BE PLACED AS SHOWN.

NOTE: MANUFACTURED IN ACCORDANCE WITH MIL-SPEC T-27-A EXCEPT THAT MIL-SPEC T-27-A SHALL NOT APPEAR ON THE CASE AND QUALIFICAT. TESTING IS NOT REQUIRED

REQ'D	ITEM	PART NUMBER	DESCRIPTION	SYM.
-------	------	-------------	-------------	------

LIST OF MATERIAL

THE TECHNICAL MATERIEL CORP.
MAMARONECK, NEW YORK

TRANSFORMER, POWER

SIZE	CODE IDENT. NO.	DWG NO.	ISSUE
B	82679	TF 384	Ø

SCALE SHEET OF

1	PALA-10K	AP 148
QTY / UNIT	MODEL USED ON	ASS'Y NO.
	APPLICATION	
	CODE	S401-30 (8549)

NOTICE TO PERSONS RECEIVING THIS DRAWING
THE TECHNICAL MATERIEL CORPORATION claims proprietary right in the material disclosed hereon. This drawing is issued in confidence for engineering information only and may not be reproduced or used to manufacture anything shown hereon without permission from THE TECHNICAL MATERIEL CORPORATION to the user. This drawing is loaned for mutual assistance and is subject to recall at any time.

UNLESS OTHERWISE SPECIFIED DIMENSIONS ARE IN INCHES AND INCLUDE CHEMICALLY APPLIED OR PLATED FINISHES	
DECIMALS .X ± .05 .XX ± .01 .XXX ± .005	FRACTIONS 1/64 TOLS. ANGLES 0° - 30'
MATERIAL	
FINISH	

FINAL APPROVAL	DATE
MECH. DES.	DATE
ELECT. DES.	DATE
CHECKED	DATE
DRAWN	DATE