

REVISIONS						
ZONE	LTR	DESCRIPTION	DATE	E.M.N.NO	DRAFT	CHKD APPD
	X	EXP. RELEASE	9-8-67		H.G.	<i>[Signature]</i>
	Ø	ORIG RELEASE FOR PROD	10/9/67	Ø	C.V.	<i>[Signature]</i>
	A	ADDED SIDE VIEWS	3/15/68	18817	H.G.	<i>[Signature]</i>
	B	STUD CHT. ADDED	8/24/72	20837	GE	<i>[Signature]</i>

MODEL	* STUD REQUIREMENTS
TF 369-1	FOUR STUDS REQ. ON TOP
TF 369-2	FOUR STUDS REQ. ON TOP AND FOUR STUDS ON BOTTOM

SPECIFICATIONS

**ELECTRICAL:**

PRIMARY WINDING  
 VOLTAGE: 110/220 VAC  
 FREQUENCY: 50/60 CPS

SECONDARY WINDING  
 VOLTAGE: 10V CT 15A, 22.4V 1A

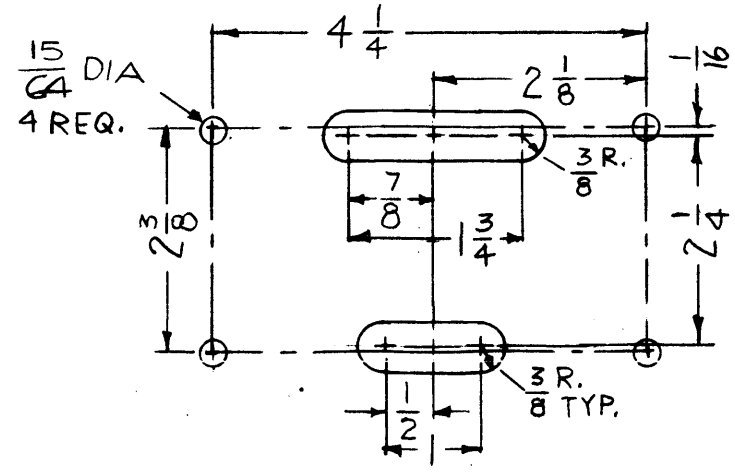
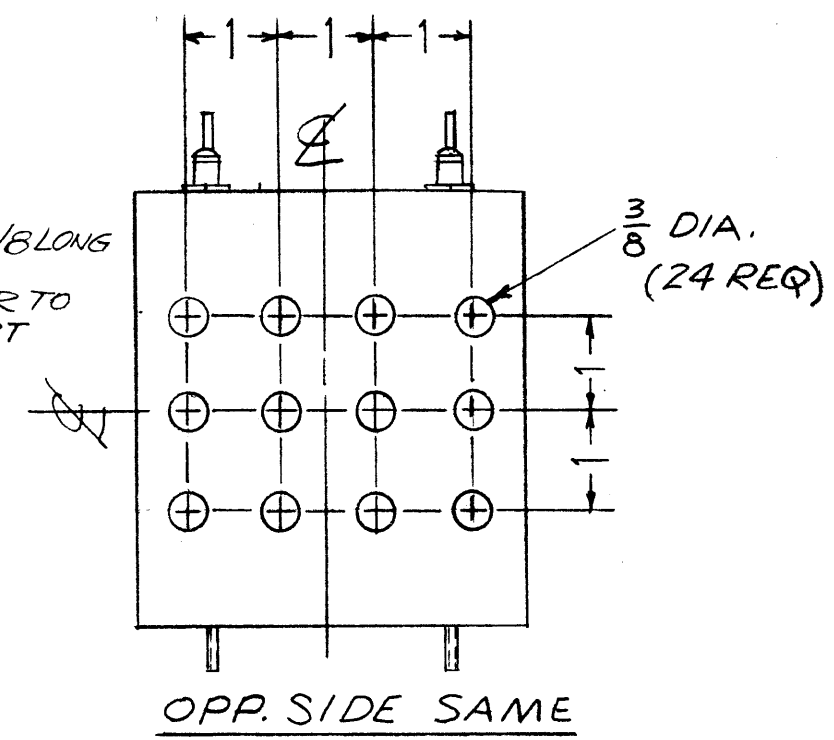
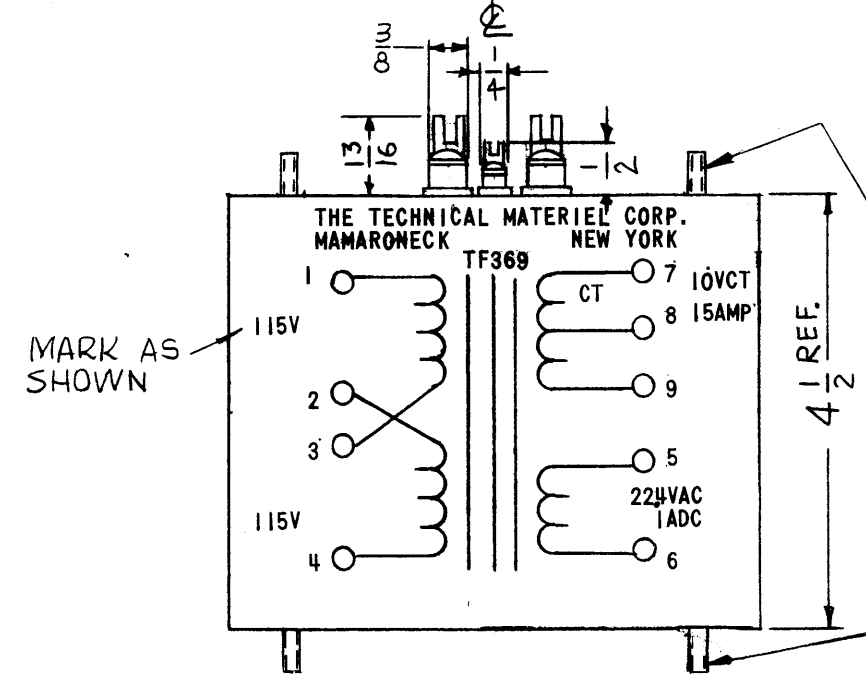
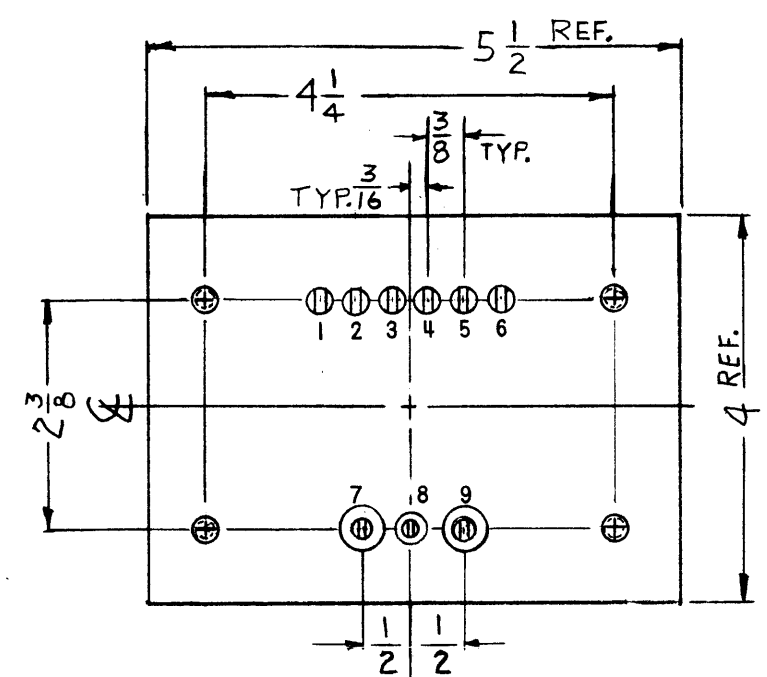
LOW CAPACITANCE 10V WINDING: APPROX 50 pF TO CASE MAX

**MECHANICAL:**

CASE: STEEL  
 FINISH: BLACK MATT, EXCEPT TERMINALS  
 DIMENSIONS: SHOWN PICTORIALY  
 TERMINALS: CERAMIC (9) SOLDER TYPE  
 TOLERANCE: ±1/32 UNLESS OTHERWISE SPECIFIED

**STAMPING:**  
 ACCORDING TO TMC SPEC S727 WHITE GOTHIC LETTERING AND LINE WORK SCHEMATIC TO BE PLACED AS SHOWN.

**NOTE:** MANUFACTURED IN ACCORDANCE WITH MIL SPEC T-27-A, EXCEPT THAT MIL SPEC T-27-A SHALL NOT APPEAR ON CASE AND QUALIFICATION TESTING NOT REQUIRED.



QTY / UNIT	MODEL USED ON	ASS'Y NO.
1	LPA-1K	
1	LPA-2	
APPLICATION		
	CODE	5401-30 (BTC*7856)
<p><b>NOTICE TO PERSONS RECEIVING THIS DRAWING</b>          THE TECHNICAL MATERIEL CORPORATION claims proprietary right in the material disclosed hereon. This drawing is issued in confidence for engineering information only and may not be reproduced or used to manufacture anything shown hereon without permission from THE TECHNICAL MATERIEL CORPORATION to the user. This drawing is loaned for mutual assistance and is subject to recall at any time.</p>		
MATERIAL		
FINISH		
BLACK MATT.		

REQ'D	ITEM	PART NUMBER	DESCRIPTION	SYM.
	F. BUDETTI		LIST OF MATERIAL	
<p>FINAL APPROVAL <i>[Signature]</i> DATE 10/6/67          MECH. DES. DATE          ELECT. DES. <i>[Signature]</i> DATE 10/6/67          CHECKED DATE          DRAWN H.G. DATE 9-8-67</p>				
<p><b>THE TECHNICAL MATERIEL CORP.</b>          MAMARONECK, NEW YORK</p> <p style="font-size: 2em;">XFMR, FILAMENT</p>				
	SIZE	CODE IDENT. NO.	DWG NO.	ISSUE
	B	82679	TF 369	B
SCALE 1/2			SHEET	OF