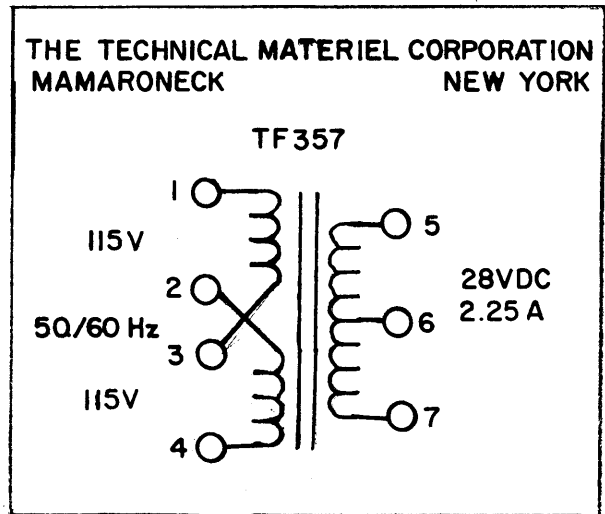
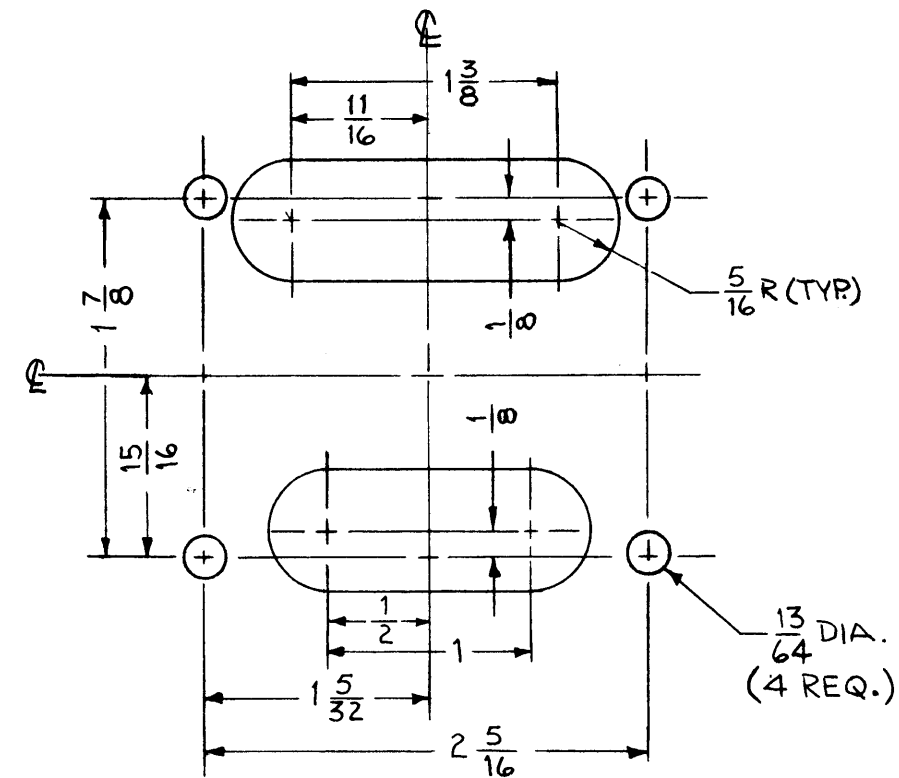


TF357



REVISIONS						
SYM	DESCRIPTION	DATE	E.M.N. NO.	DRAFT	CHKD	APPD
X	EXP. RELEASE	12-21-66				
Ø	ORIGINAL RELEASE FOR PRODUCTION	1/17/67	Ø	CV		

SPECIFICATIONS

PRIMARY WINDING:
 VOLTAGE: 115/230
 FREQUENCY: 50/60 ~
 PHASE: 1

SECONDARY WINDING:
FULL LOAD:
 VOLTAGE: 5-7, 28 VDC CT
 CURRENT DC: 2.25 AMPS
NO LOAD:
 VOLTAGE RMS: 25 VAC
 CURRENT: 2.25 AMPS
 DC SPECS: BRIDGE RECTIFIER CAP INPUT

BREAKDOWN VOLTAGE: 1000 VDC
CASE DATA:
 HERMETICALLY SEALED:
 CASE TYPE: STEEL CASE HA
 CASE DIMENSIONS: (SHOWN PICTORIALY)

TERMINAL DATA:
 NO OF TERM: 7
 TYPE: STANDOFF SOLDER TERM
 TYPE OPTIONAL

FINISH: SMOOTH GRAY ENAMEL (TMC SPEC S115) EXCEPT TERM END

MARKING:
 ALL TERMINALS TO BE METAL STAMPED (METAL CASES ONLY)
 SCHEMATIC AND TMC IDENTIFICATION TO BE MARKED ON TOP/AS SHOWN
 MARKING TO BE PER TMC SPECS S566 AND S727

REQ'D.	ITEM	PART NUMBER	DESCRIPTION	SYMBOL
L. BUTLER LIST OF MATERIAL				
MATERIAL		THE TECHNICAL MATERIEL CORP. MAMARONECK, NEW YORK		
FINISH		TITLE XFMR, POWER STEP DOWN		
UNLESS OTHERWISE SPECIFIED DIMENSIONS ARE IN INCHES AND INCLUDE CHEMICALLY APPLIED OR PLATED FINISHES		DRAWN	DATE	FINAL APPROVAL
		CHECKED	DATE	DATE
DECIMALS .X ± .05 .XX ± .01 .XXX ± .005		ELECT. DES	DATE	DATE
TOLERANCES		MECH. DES	DATE	DATE
FRACTIONS ± 1/64 ANGLES ± 0° 30'		SHEET		REV. LTR.

1	KMCI-1	ASS'Y. NO.
Q'TY./UNIT	MODEL USED ON	
SCALE 1:1	CODE C	S401-30 (7636B)

THE CONTENTS OF THIS DRAWING ARE THE EXCLUSIVE PROPERTY OF THE TECHNICAL MATERIEL CORP. ITS UNAUTHORIZED USE OR REPRODUCTION IN WHOLE OR IN PART IS STRICTLY FORBIDDEN.

NOTES