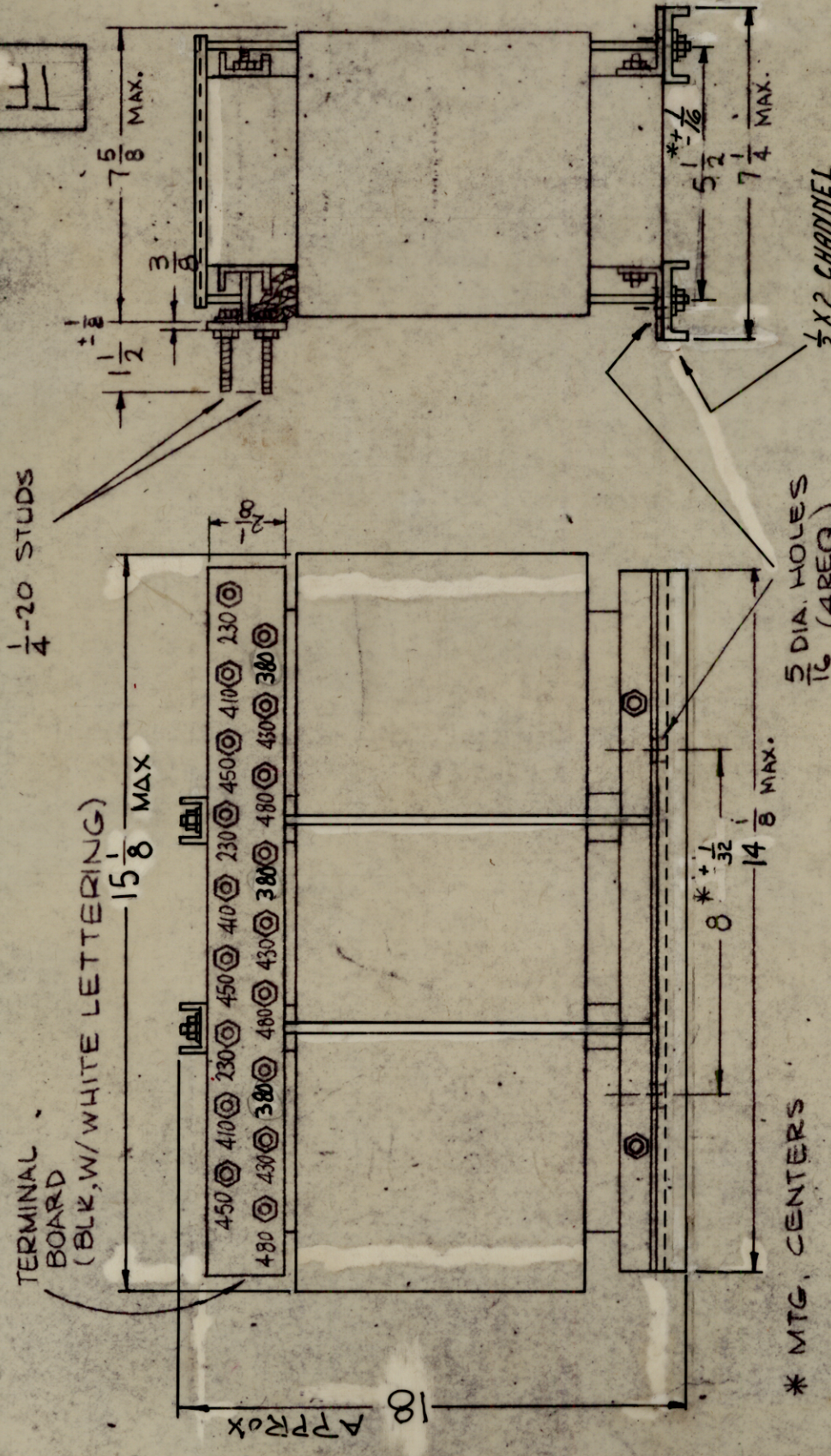


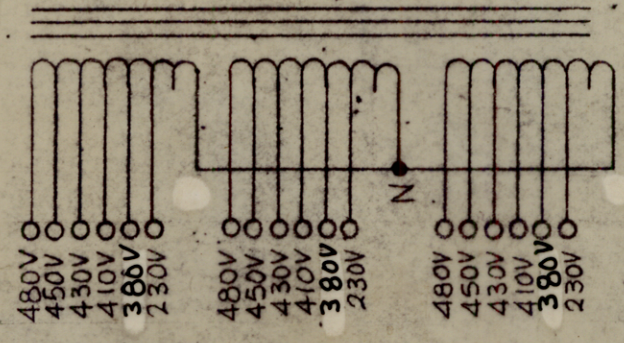
REVISIONS

SYM	DESCRIPTION	DATE	E.M.N. NO.	DRAFT	CHKD	APPD
X	EXPERIMENTAL RELEASE	10/9/66	M	Jc		
X1	1/2" DIM WAS 15 1/8 MAX.	12/19/66		Jc		
X2	15 1/8 DIM WAS 12	1/12/67		Jc		
X3	ADDED CHANNELS 19 1/8 WAS 12 1/8, 15 1/8 & 18 DIMENSION RELOCATED.	2-17-67		L.A.K.		
	ORIGINAL RELEASE FOR PRODUCTION	2-27-67		L.A.K.		



THE TECHNICAL MATERIEL CORPORATION
MAMARONECK
NEW YORK

TF 354



SCHEMATIC - TO BE STAMPED ON XFMR,
IN WHITE.

SPECIFICATIONS:

- WINDING DATA:
- INPUT: 480, 450, 430, 410, 380 VAC, 50/60 CPS, 3PH
 - OUTPUT VOLTAGE: 230 V AC
 - OUTPUT CURRENT RATING: 70 AMP RMS
 - BREAKDOWN TEST VOLTAGE 2000V AC.
 - CASE-OPEN FRAME.
 - FINISH-S115 SMOOTH GREY ENAMEL EXCEPT TERMINAL BOARD & TERMINALS.
 - TERMINAL BOARD .3/8" THICK.

NOTE: MFG-IN ACCORDANCE WITH/MIL-T-27A EXCEPT MIL-7-27A SHALL, NOT APPEAR ON CASE AND QUALIFICATION TESTING IS NOT REQUIRED.

NOTES

REQD.	ITEM	PART NUMBER	DESCRIPTION	SYMBOL
	F. BUDETTI		LIST OF MATERIAL	
		SEE SPECS		
		SEE SPECS		
FINISH UNLESS OTHERWISE SPECIFIED DIMENSIONS ARE IN INCHES AND INCLUDE CHEMICALLY APPLIED OR PLATED FINISHES DECIMAL .X ± .08 .XX ± .01 .XXX ± .015 FRACTIONS ± 1/64 ANGLES ± 0° 30'				
TITLE AUTO TRANSFORMER DRAWN SRG CHECKED JCB ELECT. DESK JCB MECH. DESK JCB DATE 2/21/67 DATE DATE DATE				
SHEET TF 354				
REV. LTR.				

THE TECHNICAL MATERIEL CORP.
MAMARONECK, NEW YORK