

REVISIONS

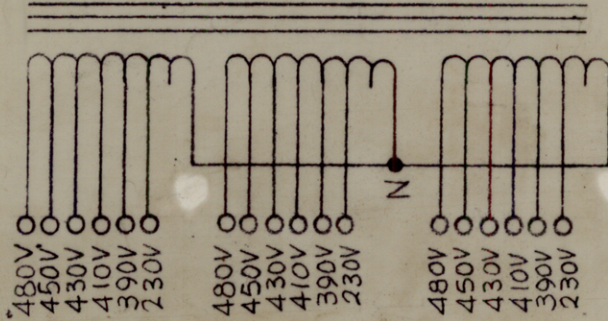
SYM	DESCRIPTION	DATE	E.M.N. NO.	DRAFT	CHKD	APPD
X	EXPERIMENTAL RELEASE	10/4/66	M	Jc		
X1	1/2" DIM WAS 15/8 MAX	11/19/66	M	Jc		
X2	15/8 DIM WAS 1/2	11/11/67		Jc		
X3	ADDED CHANNELS 14 1/8 INFS 12 1/8 & 18 DIMENSION RELOCATED.	2-17-67		L.A.K.		
Ø	ORIGINAL RELEASE FOR PRODUCTION	2-27-67		L.A.K.		

THE TECHNICAL MATERIEL CORPORATION
MAMARONECK
NEW YORK

TF 353

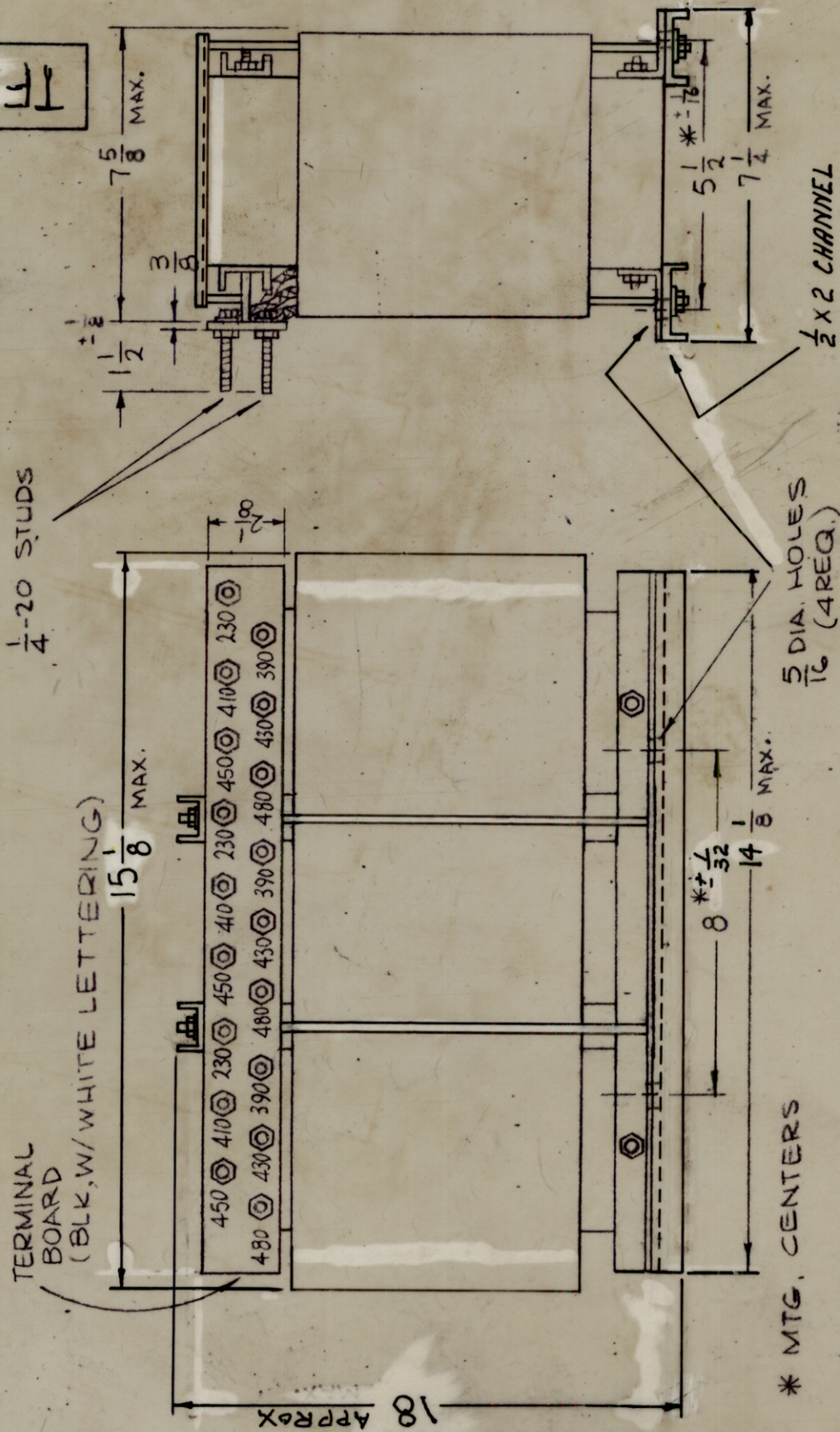
INPUT - 480, 450, 430
410, 390 VAC
50/60 CPS
3Ø

OUTPUT - 230V
LINE TO LINE
TERMINALS
70 AMPS



SCHEMATIC - TO BE STAMPED ON XFMR,
IN WHITE.

M S M T



* MTG. CENTERS

SPECIFICATIONS:

- WINDING DATA:
- INPUT: 480, 450, 430, 410, 390VAC, 50/60 CPS, 3PH
 - OUTPUT VOLTAGE: 230 V AC
 - OUTPUT CURRENT RATING: 70 AMP RMS
 - BREAKDOWN TEST VOLTAGE 2000V AC.
 - CASE-OPEN FRAME.
 - FINISH-S115 SMOOTH GREY ENAMEL EXCEPT TERMINAL BOARD & TERMINALS.
 - TERMINAL BOARD 3/8" THICK.

NOTE: MFG-IN ACCORDANCE WITH/MIL-T-27A EXCEPT MIL-7-27A SHALL NOT APPEAR ON CASE AND QUALIFICATION TESTING IS NOT REQUIRED.

NOTES

QTY./UNIT	SCALE	MODEL USED ON	ASSY. NO.
1	NONE	GPT10KLF	5401-30 (7689-1)

THE CONTENTS OF THIS DRAWING ARE THE EXCLUSIVE PROPERTY OF THE TECHNICAL MATERIEL CORP. ITS UNAUTHORIZED USE OR REPRODUCTION IN WHOLE OR IN PART IS STRICTLY FORBIDDEN.

REQ'D.	ITEM	PART NUMBER	DESCRIPTION	SYMBOL
F. BUDETTI			LIST OF MATERIAL	
		SEE SPECS	THE TECHNICAL MATERIEL CORP. MAMARONECK, NEW YORK	
		SEE SPECS	AUTO TRANSFORMER	
		UNLESS OTHERWISE SPECIFIED DIMENSIONS ARE IN INCHES AND INCLUDE CHEMICALLY APPLIED OR PLATED FINISHES		
		TOLERANCES		
		FRACTIONS ± 1/64 ANGLES ± 0° 30'		
		DECIMALS .X ± .05 .XX ± .01 .XXX ± .005		
		DRAWN	DATE	DATE
		SRG		
		CHECKED	DATE	DATE
		ELECT. DES.	DATE	DATE
		MECH. DES.	DATE	DATE
			FINAL APPROVAL	DATE
			TF 353	
			SHEET	REV. LTR.