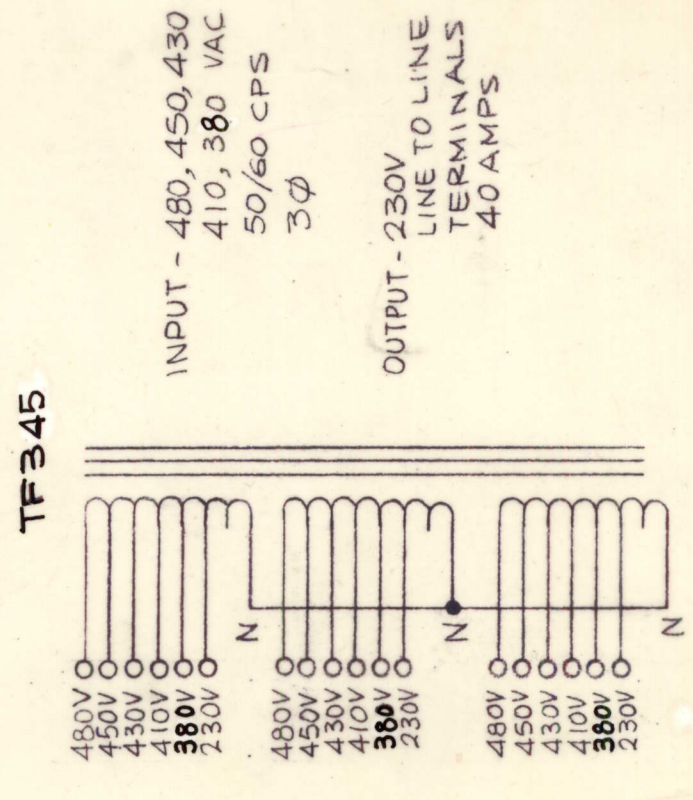
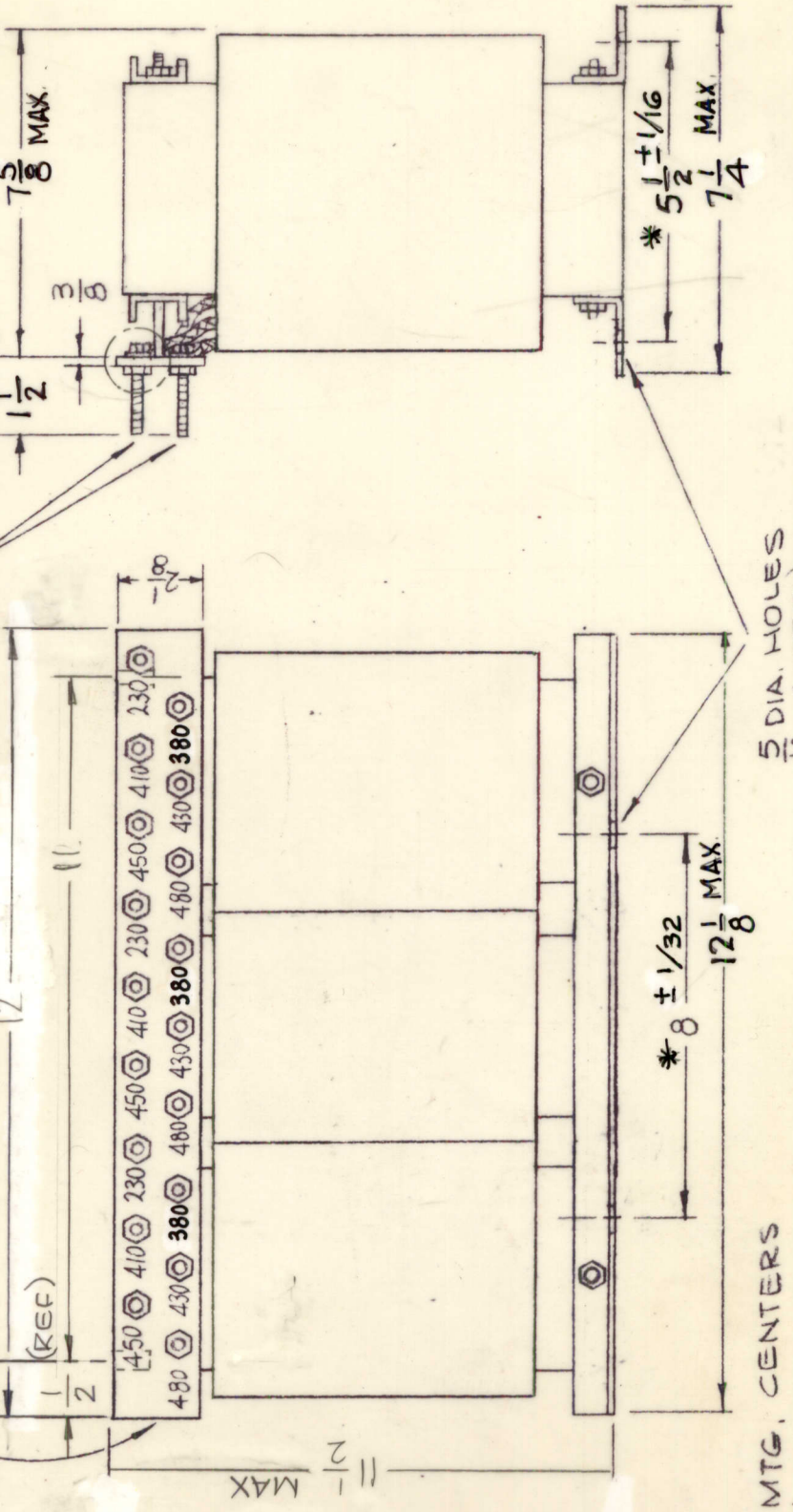


REVISIONS

SYM	DESCRIPTION	DATE	E.M.N. NO.	DRAFT	CHKD	APPD
X	EXPERIMENTAL RELEASE	5/26/66	M	Jc		
XI	SPECS REVISED & OVERALL DIMENSIONS REVISED	6-27-66	XI	M		
Ø	ORIGINAL RELEASE FOR PROD	9/14/66				
A	DIM'Z WAS 15-V/8, 11 & (2) 1/2 DIM ADDED SECT. A-A ADDED	12/30/66	17588	W40	JPB	

TF345

THE TECHNICAL MATERIEL CORPORATION
MAMARONECK
NEW YORK



SCHEMATIC - TO BE STAMPED ON XFMR.

SPECIFICATIONS:

- WINDING DATA:
- INPUT: 480, 450, 430, 410, 380VAC, 50/60 CPS, 3PH
 - OUTPUT VOLTAGE 230 VAC
 - OUTPUT CURRENT RATING 40 AMPS RMS
 - BREAKDOWN TEST VOLTAGE 2000V AC.
 - CASE-OPEN FRAME.
 - FINISH-5115 SMOOTH GREY ENAMEL EXCEPT TERMINAL BOARD & TERMINALS.
 - TERMINAL BOARD 3/8" THICK.

NOTE: MFG-IN ACCORDANCE WITH/MIL-T-27A EXCEPT MIL-7-27A SHALL NOT APPEAR ON CASE AND QUALIFICATION TESTING IS NOT REQUIRED.

NOTES

THE CONTENTS OF THIS DRAWING ARE THE EXCLUSIVE PROPERTY OF THE TECHNICAL MATERIEL CORP. ITS UNAUTHORIZED USE OR REPRODUCTION IN WHOLE OR IN PART IS STRICTLY FORBIDDEN.

REQ'D.	ITEM	PART NUMBER	DESCRIPTION	SYMBOL
	F. BUDETTI		LIST OF MATERIAL	
	MATERIAL	SEE SPECS	THE TECHNICAL MATERIEL CORP. MAMARONECK, NEW YORK	
	FINISH	SEE SPECS	TRANSFORMER, POWER, FIXED	
		UNLESS OTHERWISE SPECIFIED DIMENSIONS ARE IN INCHES AND INCLUDE CHEMICALLY APPLIED OR PLATED FINISHES		
		DECIMALS .X ± .05 .XX ± .01 .XXX ± .005	FRACTIONS ± 1/84 ANGLES ± 0° 30'	
	QTY./UNIT	MODEL USED ON	ASSY. NO.	
	SCALE NONE	C	S401-30 (7467)	
	DRAWN	DATE	FINAL APPROVAL	DATE
	WJS	11-30-65	M. J. May	10/14/66
	CHECKED	DATE		
	J.P.S.			
	ELECT. DES.	DATE		
	M.E.H.	DATE		
	MECH. DES.	DATE		
		12/14/66	TF345	A
			SHEET	REV. LTR.