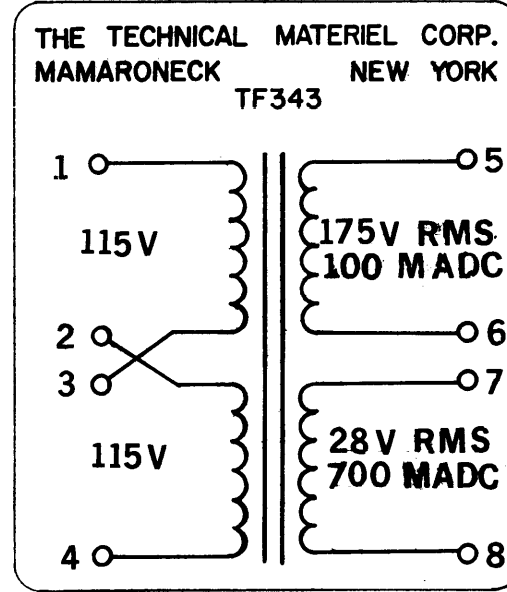
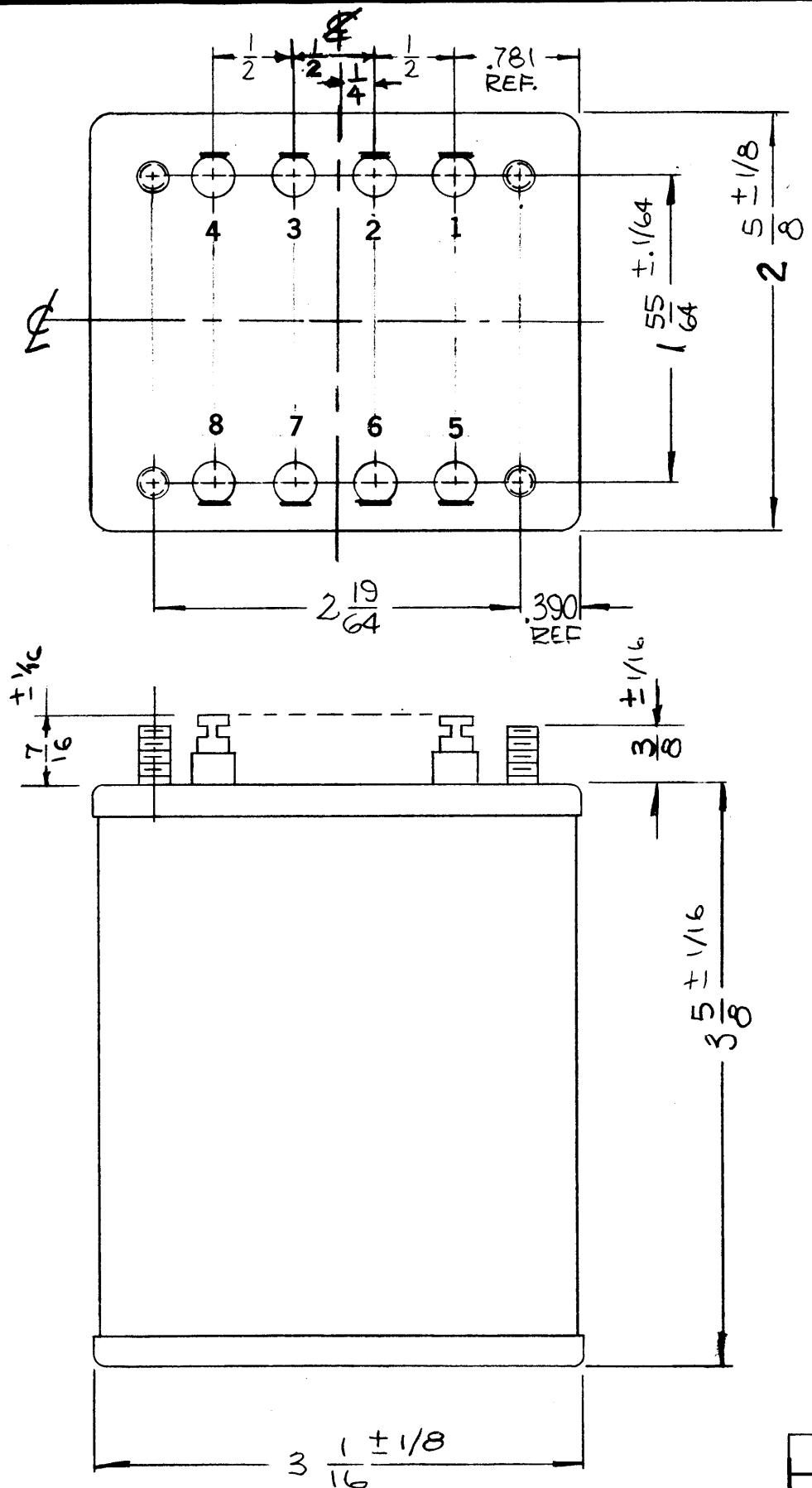


STANDARD DRAWING



TF343

REVISIONS					
SYM	DESCRIPTION	DATE	E.M.N. NO.	DRAFT	CHKD APPD
X	EXPERIMENTAL RELEASE	6.2.66	—	WV	JL QP
Ø	ORIGINAL RELEASE FOR PRODUCTION	6-28-66	Ø	SDL	JL QP

SPECIFICATIONS

ELECTRICAL:

PRIMARY:
VOLTAGE: 115/230AC
FREQUENCY: 50 TO 400HZ
PHASE: SINGLE

SECONDARY:
VOLTAGE: 5-6: 175V RMS
CURRENT: 100MADC
VOLTAGE: 7-8: 28V RMS
CURRENT: 700MADC

MECHANICAL:

CASE: CR STEEL, HERMITICALLY SEALED
FINISH: S115 TMC GRAY (EXCEPT STUD END)
DIMENSIONS: SHOWN PICTORIALY
TERMINALS: SOLDER LUG TYPE, CERAMIC STANDOFF
MTG. STUDS: 8-32 x 3/8 LONG

STAMPING:

TERMINALS SHALL BE METAL-STAMPED (AS SHOWN).
SCHEMATIC DIAGRAM TO BE PLACED ON END OPPOSITE TERMINAL END.
BLACK GOTHIC LETTERING AND LINE WORK AS PER TMC SPEC S727.

NOTE

TO BE MANUFACTURED IN ACCORDANCE WITH MIL-SPEC T-27-A, EXCEPT THAT MIL-SPEC T-27-A SHALL NOT **APPEAR** ON CASE AND QUALIFICATION TESTING IS NOT REQUIRED.

NOTES

1	CFA-2	
Q'TY./UNIT	MODEL USED ON	ASS'Y. NO.
SCALE 1/1	CODE	S401-30(BTC7315)
THE CONTENTS OF THIS DRAWING ARE THE EXCLUSIVE PROPERTY OF THE TECHNICAL MATERIEL CORP. ITS UNAUTHORIZED USE OR REPRODUCTION IN WHOLE OR IN PART IS STRICTLY FORBIDDEN.		

REQ'D.	ITEM	PART NUMBER	DESCRIPTION	SYMBOL
LIST OF MATERIAL				
MATERIAL		THE TECHNICAL MATERIEL CORP. MAMARONECK, NEW YORK		
FINISH		TITLE TRANSFORMER, ISOLATION & STEP-DOWN & STEP-UP		
UNLESS OTHERWISE SPECIFIED DIMENSIONS ARE IN INCHES AND INCLUDE CHEMICALLY APPLIED OR PLATED FINISHES		DRAWN WV	DATE 6.2.66	FINAL APPROVAL JL
		CHECKED JL	DATE 6-13-66	DATE 6/28/66
DECIMALS .X ± .05 .XX ± .01 .XXX ± .005		ELECT. DES. JL	DATE	TF343
FRACTIONS ± 1/64 ANGLES ± 0° 30'		MECH. DES. JL	DATE	Ø
TOLERANCES		SHEET		REV. LTR.

ML 28 6/29/66