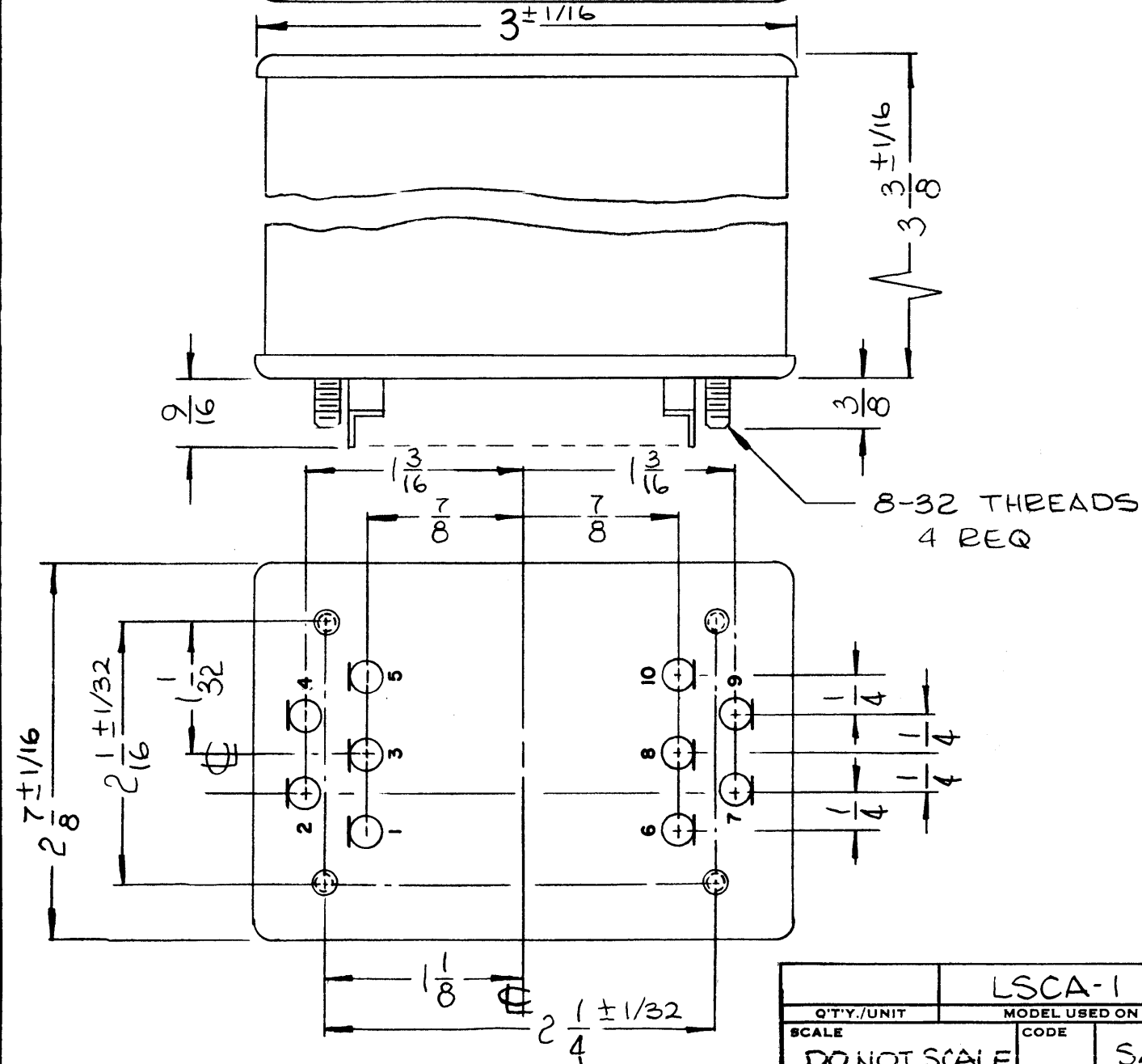
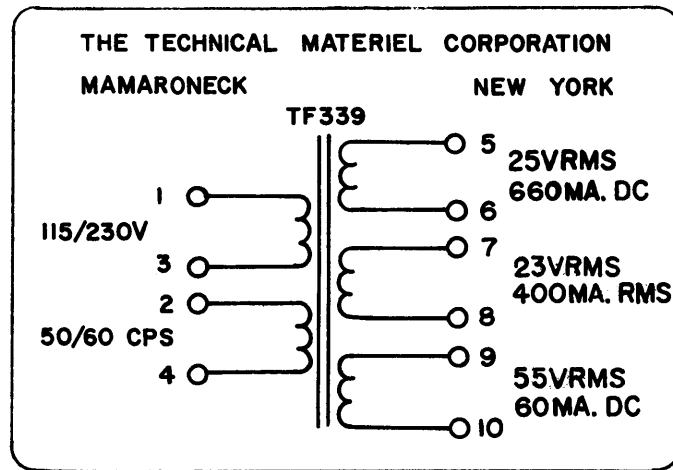


STANDARD DRAWING



| REVISIONS | | | | | | |
|-----------|---------------------------------|---------|------------|-------|------|------|
| SYM | DESCRIPTION | DATE | E.M.N. NO. | DRAFT | CHKD | APPD |
| X | EXPERIMENTAL RELEASE | 9-16-66 | VM | Jc | | |
| | ORIGINAL RELEASE FOR PRODUCTION | 9-23-66 | Ø | CV | | |

SPECIFICATIONS

ELECTRICAL:

- TRANSFORMER, POWER (ISOLATION & STEP-DOWN)
- COIL DATA:
PRIMARY WINDING: TERM 1,2,3,4 115/230V, 50/60 HZ (CPS)
SECONDARY WINDING:
FULL LOAD: (5&6, 9&10 CAP. INPUT) (SEE PICTORIAL)
NO LOAD:
TERM 5&6 27.1VRMS 660 MA.DC
TERM 7&8:24.8VRMS, 400MA.RMS
TERM 9&10:60.8VRMS 60MA.DC
BREAKDOWN BETWEEN WINDINGS: 1000 VDC

MECHANICAL:

- CASE DATA:
A. HERMETICALLY SEALED
B. RECTANGULAR STEEL CASE, MIL TYPE Y-Y
C. BODY DIM: SEE PICTORIAL
- MOUNTING DATA:
A. MOUNTING METHOD: STUD
B. MOUNTING DIM. (4) 8-32 STUDS ON 2 1/16 x 2 1/4 CENTERS
3/8 HIGH
- TERMINAL DATA:
A. 10 TERMINALS
B. SOLDER TYPE 9/16 HIGH INSULATED
- FINISH: SMOOTH GRAY ENAMEL (TMC SPEC S115) EXCEPT TERMINAL END
- MARKING: METAL STAMP 1 to 10 AS SHOWN. MARK TOP AS PER TMC SPEC S727. AS SHOWN

NOTE: TO BE MANUFACTURED IN ACCORDANCE WITH MIL-SPEC T-27-A, EXCEPT THAT MIL-SPEC T-27-A SHALL NOT APPEAR ON CASE AND QUALIFICATION TESTING IN NOT REQUIRED.

| | | | | | |
|---|--|---|-----------------|-----------------------|-----------------|
| MATERIAL | | THE TECHNICAL MATERIEL CORP. EATON MAMARONECK, NEW YORK | | | |
| FINISH | | TITLE TRANSFORMER, POWER (ISOLATION & STEPDOWN) | | | |
| UNLESS OTHERWISE SPECIFIED DIMENSIONS ARE IN INCHES AND INCLUDE CHEMICALLY APPLIED OR PLATED FINISHES | | DRAWN WMM | DATE | FINAL APPROVAL MAM | DATE 9/22/66 |
| SCALE DO NOT SCALE | | CHECKED JC | DATE | SHEET TF339 | |
| THE CONTENTS OF THIS DRAWING ARE THE EXCLUSIVE PROPERTY OF THE TECHNICAL MATERIEL CORP. ITS UNAUTHORIZED USE OR REPRODUCTION IN WHOLE OR IN PART IS STRICTLY FORBIDDEN. | | ELECT. DES. JC | DATE 9-22-66 | REV. LTR. Ø | |
| DECIMALS .X ± .05 .XX ± .01 .XXX ± .005 | | FRACTIONS ± 1/64 ANGLES ± 0° 30' | | TOLERANCES | |

NOTES