

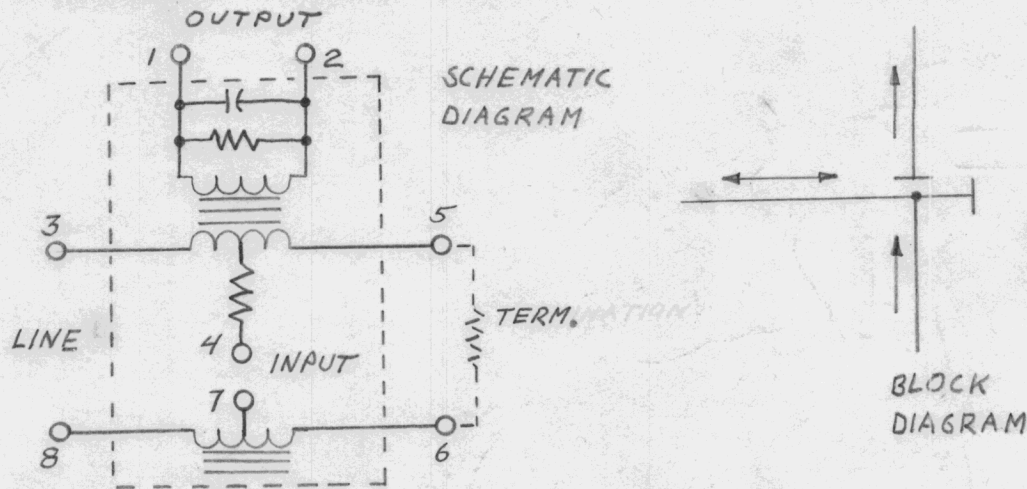
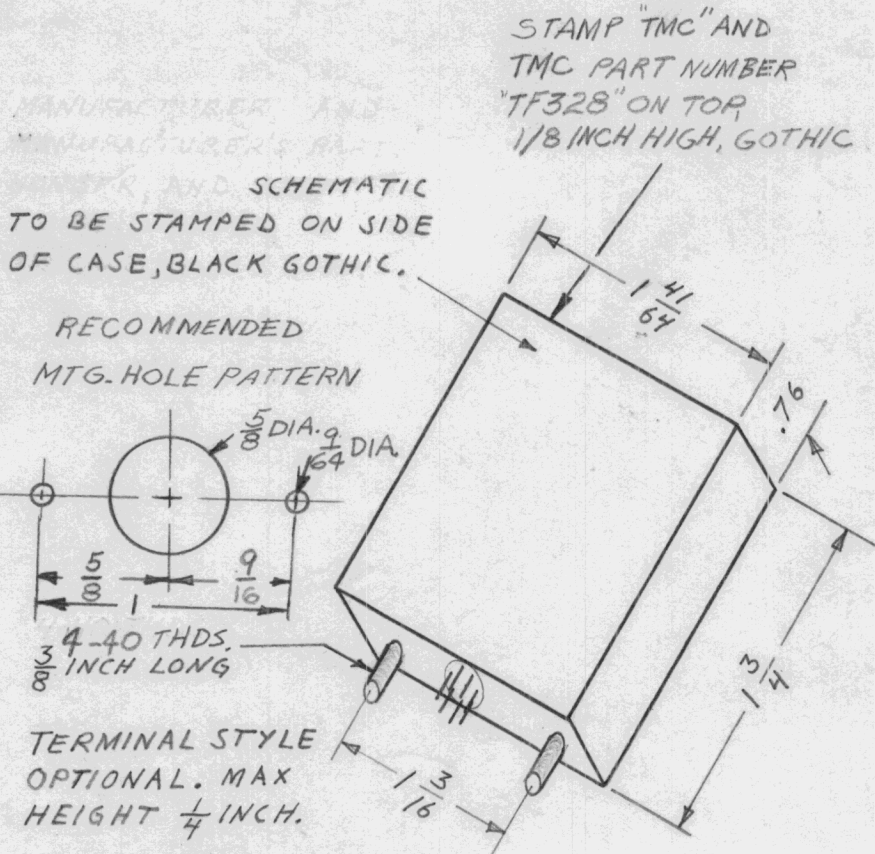
STANDARD DRAWING

REQ. PER UNIT	USED ON		
	MODEL	ASS'Y. NO.	DATE
1	RARB-1		10 June 65
1	RASB-1		10 June 65

TF 328 A

SPECIFICATIONS AT 1000 CPS

INSERTION LOSS - INPUT TO LINE: -10db Max.
 LINE TO OUTPUT: -5db Max.
 INPUT TO OUTPUT: -60db Min.
 IMPEDANCE - LINE: 600 ohm Balanced
 OUTPUT: 600 ohm
 INPUT: 600 ohm Balanced
 TERMINATION: 600 ohm Balanced
 OPERATING LEVEL: +14dbm Max. 0dbm Nom.
 FREQUENCY RESPONSE: 250 CPS to 6Kc: ±1db
 HERMETICALLY SEALED: Per MIL-T-27 (Grade 1, Class R)
 CASE: Cold Rolled Steel
 TEMPERATURE RANGE: -40° C. to +105° C.
 TERMINALS: Solder Posts (8)



REQ.	ITEM	PART NO.	LANGER/DEWEY DESCRIPTION				SYMBOL			
			THE TECHNICAL MATERIEL CORP. MAMARONECK. NEW YORK							
			TRANSFORMER, HYBRID, 600 ohm							
			MATERIAL							
			TYPE & TEMPER Grey Enamel	HEAT TREAT. SPEC.	DRAWN 10 JUNE 65	CHECKED JCS	FINAL APPROVAL MM/Key 6/10/65			
			FINISH & SPEC. NO. S401-397(HT-11)		ELEC. DES. APP. (Signature)	MECH. DES. APP. JCS 6-10-65	TF 328 A			
DECIMALS .X ± .05 .XX ± .01 .XXX ± .005	FRACTIONS ± 1/64 ANGLES ± 0° 30'	TOLERANCES	SCALE DO NOT SCALE	CODE C	DESCRIPTION UNLESS OTHERWISE SPECIFIED DIMENSIONS ARE IN INCHES AND INCLUDE CHEMICALLY APPLIED OR PLATED FINISHES	DATE 7-28-65	CH. NO. 14499	DRAFTS JRV	CHECKER JCS	ENG. APP. (Signature)
A			RECOMMENDED HOLE PAT. STAMPING NOTE ADDED							
Ø			ORIGINAL RELEASE FOR PRODUCTION							