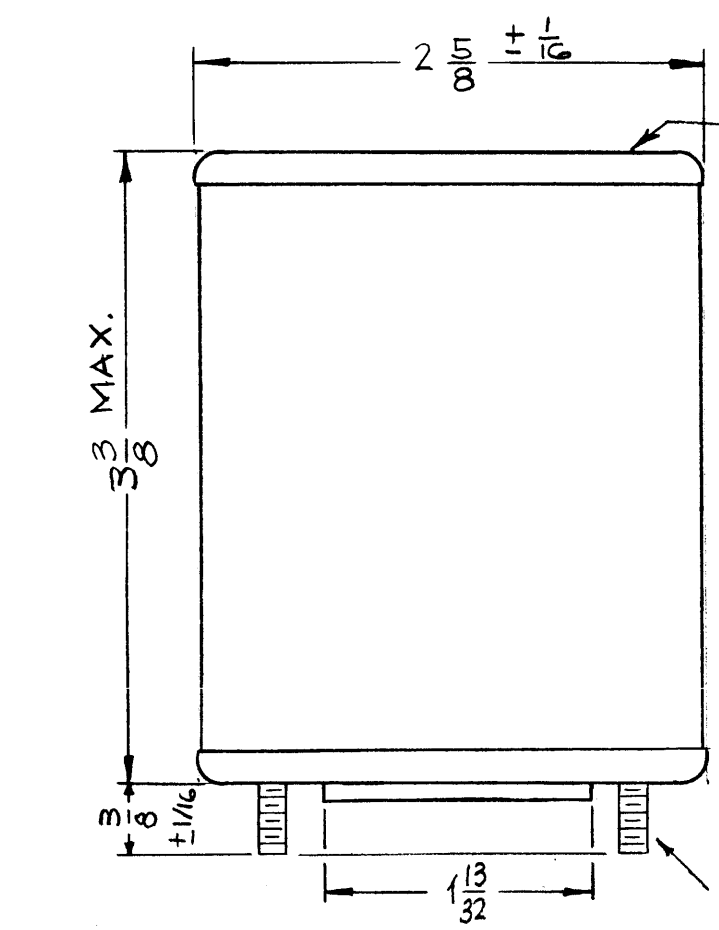


TF 306 A

REVISIONS

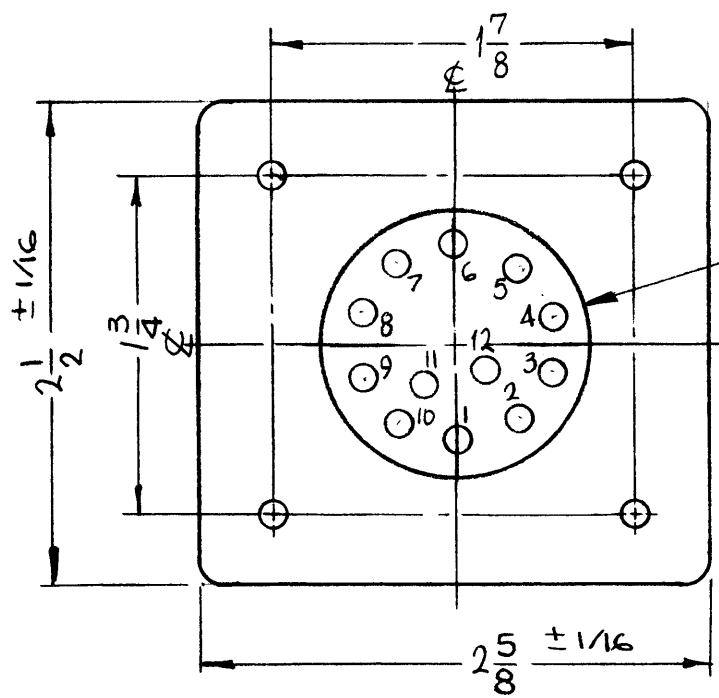
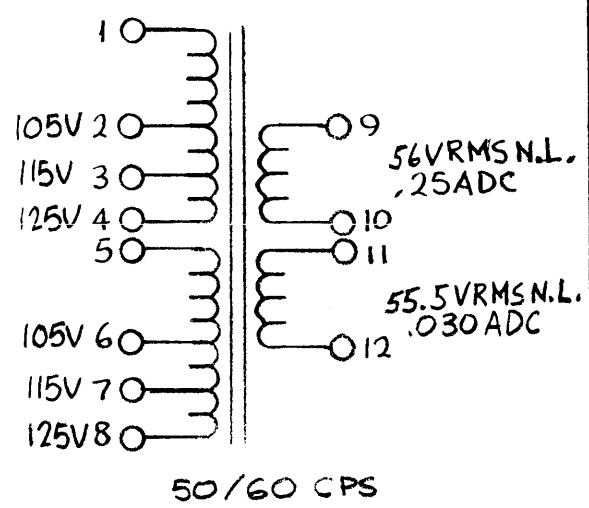
SYM	DESCRIPTION	DATE	E.M.N. NO.	DRAFT	CHKD	APPD
X	EXPERIMENTAL RELEASE	2-25-65		HCA	JM	
Ø	ORIGINAL RELEASE FOR PRODUCTION	3-11-65		HCA	JM	
A	3-3/8 MAX. WAS 3-3/8 ± 3/32; "H.L." ADD. TO 56VMRS & 55.5VMRS	4-19-65	13839	LL	JCB	



TO BE PLACED ON TOP OF TRANSFORMER

THE TECHNICAL MATERIEL CORPORATION
MAMARONECK NEW YORK

TF 306



CASE DATA:

- A. HERMETICALLY SEALED
- B. FULLY ENCLOSED
- C. GRAY
- D. MATERIAL STEEL HOT TIN DIPPED

PRIMARY WINDINGS

- A. 105, 115, 125V
- B. 50/60 CPS
- C. SINGLE

SECONDARY WINDINGS (NO LOAD)

- A. 56V; 55.5V
- B. 250MADC; 30MADC

TERMINAL DATA:

- A. QUANTITY 12
- B. SOLDER LUG

MARKING: SCHEMATIC TO BE STAMPED IN BLACK, LETTERING GOTHIC AS PER TMC SPEC. S-727 LOCATED AS SHOWN.

REQ'D.	ITEM	PART NUMBER	DESCRIPTION	SYMBOL
--------	------	-------------	-------------	--------

EATON		LIST OF MATERIAL		
MATERIAL	SEE SPECS	THE TECHNICAL MATERIEL CORP. MAMARONECK, NEW YORK		
FINISH	SEE SPECS	TITLE TRANSFORMER,		

Q'TY./UNIT	ARCA-1	ASS'Y. NO.
SCALE	MODEL USED ON	
1:1	C	S401-30 (6470)

THE CONTENTS OF THIS DRAWING ARE THE EXCLUSIVE PROPERTY OF THE TECHNICAL MATERIEL CORP. ITS UNAUTHORIZED USE OR REPRODUCTION IN WHOLE OR IN PART IS STRICTLY FORBIDDEN.

UNLESS OTHERWISE SPECIFIED DIMENSIONS ARE IN INCHES AND INCLUDE CHEMICALLY APPLIED OR PLATED FINISHES		DRAWN HCA	DATE 2-25-65	FINAL APPROVAL MMA	DATE 3/23/65
DECIMALS .X ± .05 .XX ± .01 .XXX ± .005	TOLERANCES	CHECKED JCB	DATE 3-11-65	TF 306	
		ELECT. DES. JCB	DATE 3-25-65	A	
		MECH. DES.	DATE	SHEET	REV. LTR.

NOTES