

STANDARD DRAWING

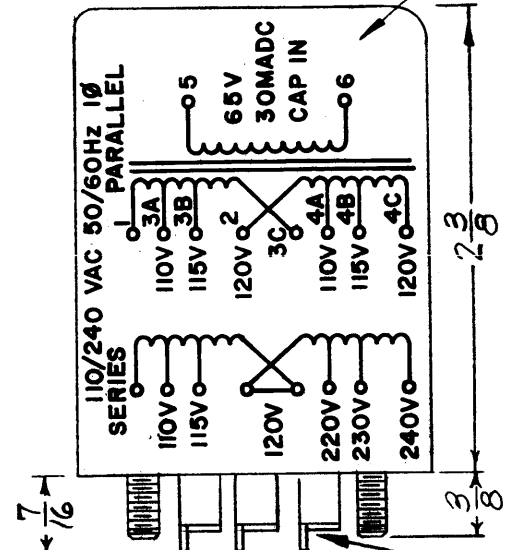
TF 293

REVISIONS

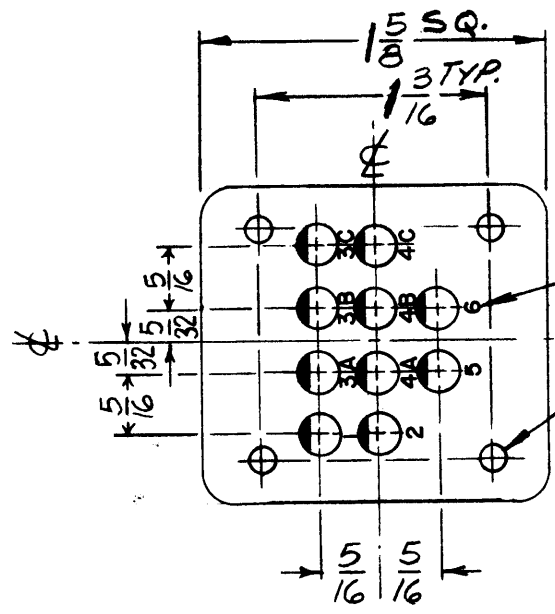
SYM	DESCRIPTION	DATE	E.M.N. NO.	DRAFT	CHKD	APPD
Ø		12/7/66	Ø	CV		

THE TECHNICAL MATERIEL CORP.
MAMARONECK NEW YORK

MARK AS SHOWN
PER TMC SPEC S727
BLACK GOTHIC LETTERING
& LINEWORK



7/32 DIA.



METAL STAMP TERMINALS
AS SHOWN

6-32 x 3/8 LG. STUDS
4 REQ'D.

—ELECTRICAL SPECIFICATIONS—

TRANSFORMER, POWER, ISOLATION & STEP-DOWN
COIL DATA:
PRIMARY WINDING: 50/60CPS, 1 PHASE
VOLTAGE: 110, 115, 120/220, 230, 240
SECONDARY WINDING: 65 V, 20 MADC CAP IN

—MECHANICAL SPECIFICATIONS—

CASE DATA: HERMETICALLY SEALED
CR STEEL
BODY DIMENSIONS- 1 5/8" LENGTH & WIDTH
2 3/8" HIGH

MOUNTING DATA:
MOUNTING METHOD: STUD
MOUNTING DIMENSIONS: (4) 6-32 THD STUDS ON 1 3/16
CENTERS 3/8 HIGH

TERMINAL DATA: (10) TERMINALS
SOLDER LUG TYPE 7/16 HIGH

FINISH: SMOOTH GRAY ENAMEL (TMC SPEC S115) EXCEPT TERMINAL END

MARKING: METAL STAMP TERMINALS 1 THRU 10 AS SHOWN.
MARK TOP AS SHOWN PER TMC SPEC S727.

REQ'D.	ITEM	PART NUMBER	DESCRIPTION	SYMBOL
--------	------	-------------	-------------	--------

LIST OF MATERIAL

MATERIAL	THE TECHNICAL MATERIEL CORP. MAMARONECK, NEW YORK			
FINISH	TITLE TRANSFORMER, POWER			

Q'TY./UNIT	ARCA-1	ASS'Y. NO.
SCALE	CODE	MODEL USED ON
4	C	S401-30 (6242)

THE CONTENTS OF THIS DRAWING ARE THE EXCLUSIVE PROPERTY
OF THE TECHNICAL MATERIEL CORP. ITS UNAUTHORIZED USE OR
REPRODUCTION IN WHOLE OR IN PART IS STRICTLY FORBIDDEN.

UNLESS OTHERWISE SPECIFIED DIMENSIONS ARE IN INCHES AND INCLUDE CHEMICALLY APPLIED OR PLATED FINISHES		DRAWN H. AUSTIN	DATE 3/25/66	FINAL APPROVAL [Signature]	DATE 12/6/66
DECIMALS .X ± .05 .XX ± .01 .XXX ± .005	TOLERANCES	CHECKED [Signature]	DATE 10/27/66	TF 293	
FRACTIONS ± 1/64 ANGLES ± 0° 30'		ELECT. DES. [Signature]	DATE 11/2/66	Ø	
		MECH. DES.	DATE	SHEET	REV. LTR.

NOTES