

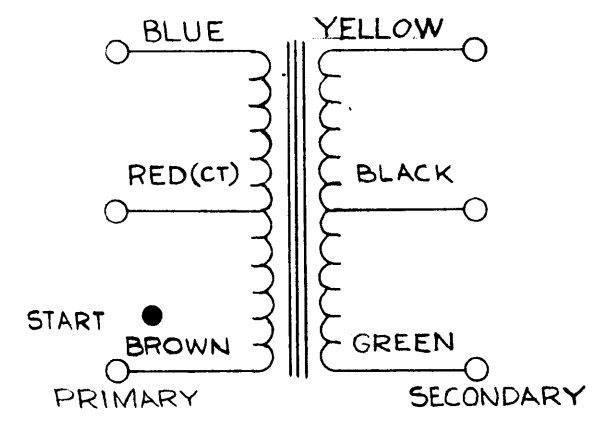
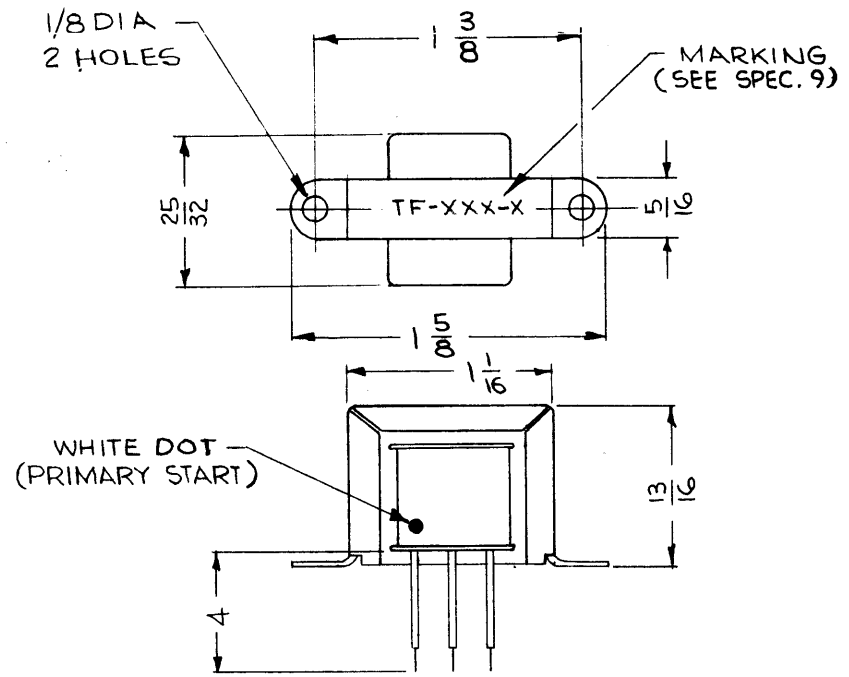
TF-267

THE CONTENTS OF THIS DRAWING ARE THE EXCLUSIVE PROPERTY OF THE TECHNICAL MATERIEL CORP. ITS UNAUTHORIZED USE OR REPRODUCTION IN WHOLE OR IN PART IS STRICTLY FORBIDDEN.

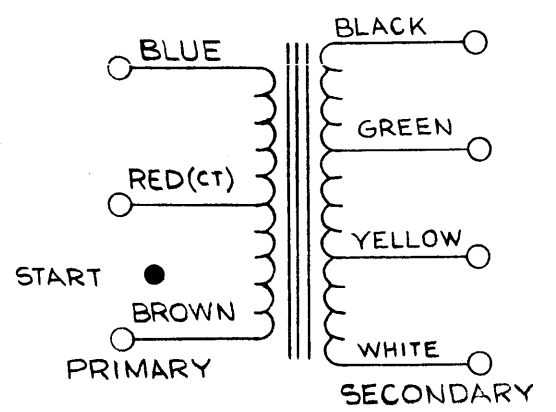
TMC PART NUMBER	MFR. REF.	MFR. PART NUMBER	APPLICATION	TURNS RATIO PRI.-SEC.	IMPEDANCE (OHMS)		DC RES. OHMS ±20%		OPER. FREQ. RANGE	FREQUENCY RESPONSE AT FREQ.	RATED OUTPUT (MILLI-WATTS)	SCHEMATIC STYLE SEE PICTORIALS
					PRI.	SEC.	PRI.	SEC.				
TF-267-1	A	FF4	OUTPUT	5.00:1	400 CT	4,8, 16	34	1.5	200 to 20,000 cps	±3db at 250-3500 cps	1000	B
TF-267-2	A	155A3	INTERSTAGE	1.76:1	3,000 CT	1000 CT	260	105	15,000 cps	±3db at 250-3500 cps	1000	A
TF-267-3	A	155A4	OUTPUT	2.50:1	4,000 CT	600 CT	370	60	15,000 cps	±3db at 250-3500 cps	1000	A
TF-267-4	A	155A5	OUTPUT	9.10:1	25,000 CT	1200 CT	1550	88	15,000 cps	±3db at 250-3500 cps	1000	A
TF-267-5	B	146H	OUTPUT	12.5:1	500CT	3.2	26	0.3	150 TO 45,000 CPS	+0-2db @ 1000CPS REF 150-45,000 CPS	700	C
TF 267-6	A	TA39	OUTPUT	2.5:1	100CT	4-8-16	10.9	1.45	250 TO 10,000 CPS	±2db 250-10K CPS	300	B
TF 267-7	A	155A36	OUTPUT	2.5:1	6-10K CT	600 CT						

SPECIFICATIONS:

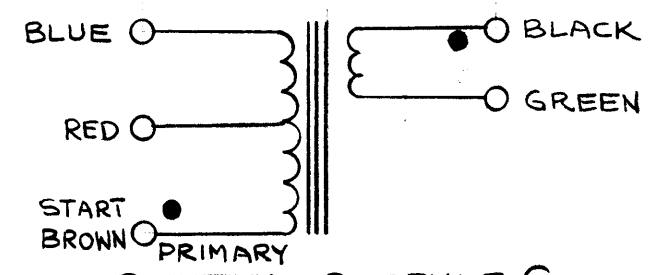
1. FREQUENCY RANGE: SEE CHART
2. db VARIATION OVER RANGE: ±3db
3. DC CURRENT RATING: NOT RATED
4. INTERNAL SHIELDING: NONE
5. LEADS: SIZE 26 AWG SOLID TINNED COPPER, 4 INCHES LONG, WITH REMOVEABLE COLOR CODED SLEEVING. (IT.#5 SIZE #20AWG TF-267-5 ONLY)
6. CORE: SILICON STEEL
7. ENCAPSULATION: NONE
8. CONSTRUCTION: OPEN-FRAME TYPE
9. MARKING: TMC PART NUMBER (PER CHART) TO BE STAMPED ON BRACKET AS SHOWN.
10. BRACKET: MATERIAL - STEEL
FINISH - CADMIUM PLATE



SCHEMATIC ~ STYLE A



SCHEMATIC ~ STYLE B



SCHEMATIC ~ STYLE C

D	TF 267-7 ADD	11-24-63	GDL			
C	ADD TF 267-6	12-27-63	21114	9E	EP	EP
B	SPECS. #5 REVISED, S401 #5 ADDED SCHEMATIC-STYLE C ADD, TF-267-5 ADD.	8.19.64	12166	WB	@	RKA
A	YELLOW LEAD WAS GREEN GREEN LEAD WAS YELLOW	6/9/64	11495	A.M.	@	TRE
SYM	DESCRIPTION	DATE	CH. NO.	DRAFTS	CHECKER	ENG. APP.
UNLESS OTHERWISE SPECIFIED:		SCALE: NOT TO SCALE				
DIMENSIONS ARE IN INCHES		MAXIMUM ALLOWABLE TOLERANCES HAVE BEEN DETERMINED AND ANY DEVIATIONS WILL BE CAUSE FOR REJECTION.				
TOLERANCES ON FRACTIONS ± 1/64 DECIMALS ± .005 ANGLES ± 1/2°		REMOVE ALL BURRS AND SHARP EDGES				

1(-5)	TTR-10				
1(-4)	TTR-10				
1(-3)	TTR-10				
1(-2)	TTR-10				
1(-1)	TTR-10			7-18-63	
REQ. PER UNIT	MODEL	SECTION	ASS'Y. NO.	DATE	
USED ON					

CODE	S-401-230 (1-4)	S401-158 (-5)
REQ. ITEM	PART NO.	KOHN DESCRIPTION E3037,48 THRU S1 SYMBOL
THE TECHNICAL MATERIEL CORP. MAMARONECK, NEW YORK		
TRANSFORMER, AUDIO FREQ		
MATERIAL		
TYPE & TEMPER	HEAT TREAT. SPEC.	DRAWN CHECKED FINAL APPROVAL
		RON KOHN 7-19-63 ELEC. DES. APP. MECH. DES. APP.
FINISH & SPEC. NO.		TF-267 D