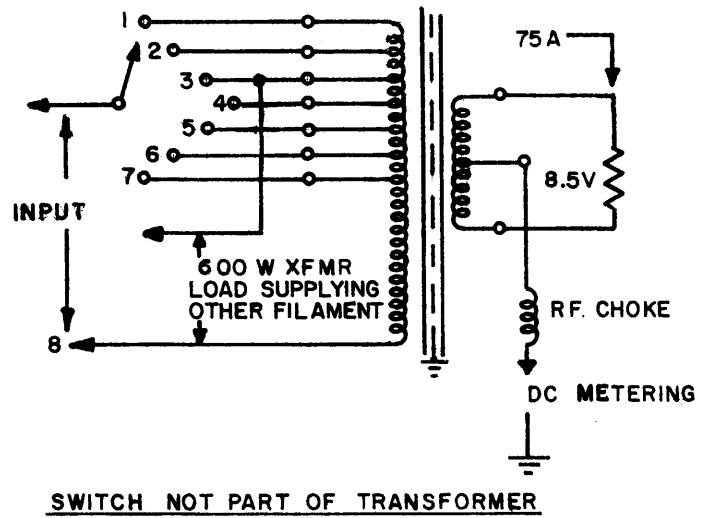
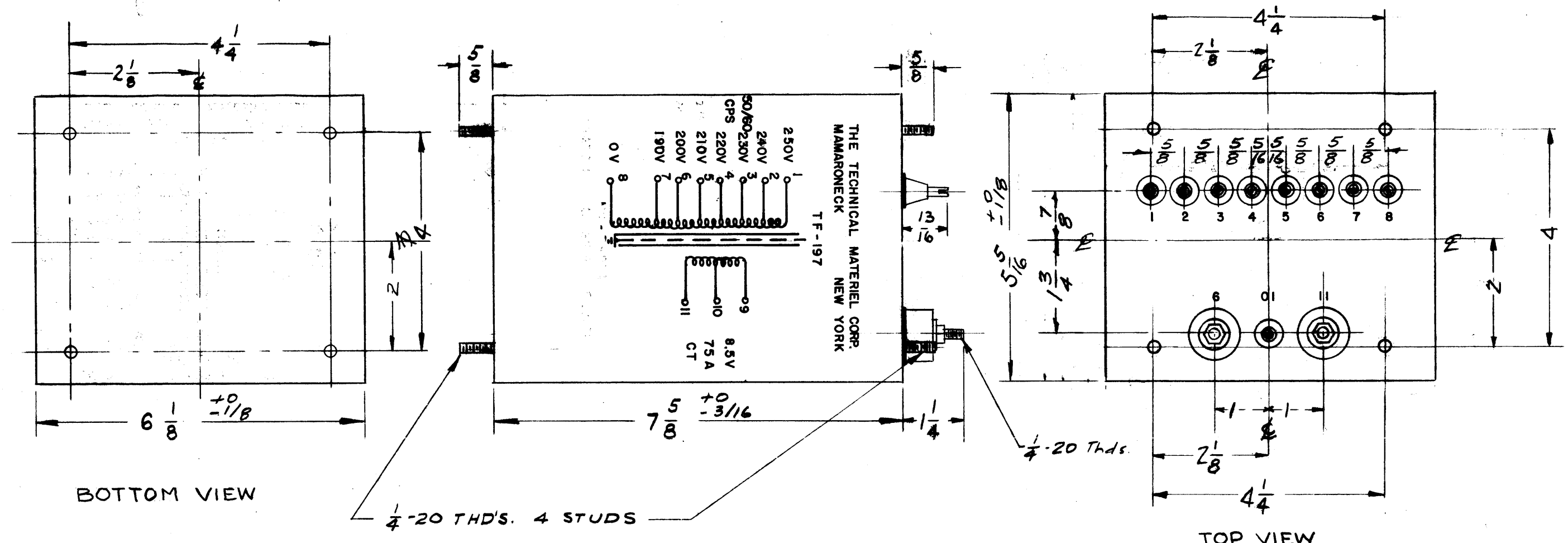


TF-197



ELECTRICAL SPECIFICATIONS:
 PRIMARY— 230V, 50/60 CPS 1 Ø, WITH TAPS, PLUS AUTOTRANSFORMER SUPPLYING 600 W
 SECONDARY— 8.5V AT 75 AMP, 2000 VOLT INSULATION.

MECHANICAL SPECIFICATIONS:
 CASE— RECTANGULAR, STEEL, MIL TYPE YY HERMETICALLY SEALED.
 FINISH TMC SMOOTH GREY ENAMEL (S-115), EXCEPT TERMINAL END.
 SIZE 6-1/8 X 5-5/16 X 7-5/8 HIGH, EXCLUDING STUDS AND TERMINALS.
 STAMPING TERMINALS SHALL BE STAMPED 1 TO 11 AS SHOWN. OPPOSITE END SHALL BE RUBBER STAMPED IN BLACK AS SHOWN.

NOTE: MANUFACTURED IN ACCORDANCE WITH MIL SPEC T-27-A EXCEPT THAT MIL SPEC T-27-A SHALL NOT APPEAR ON CASE AND QUALIFICATION TESTING IS NOT REQUIRED.

E		ON MECH SPECS 5 5/8 WAS 5 1/2	10-23-67	18559	W.C.	J.P.	EFM
D	1	NOTE ADDED (MIL T-27-A)	6-29-60	2572	J.C.B.	T.G.	ORB
C	1	8.5V WAS 7.5V	1-21-59	705	J.C.B.	T.G.	ORB
B		1/4-20 THDS 5/8 LONG ADDED TO TOP VIEW	12-15-58	570	J.C.B.	T.G.	ORB
A		schematic clarified	11-9-58		J.C.B.	T.G.	ORB
ISSUE	ITEM	CHANGED FROM	DATE	CH. NO.	DRAFTS	CHECKER	ENG. APP.
TOLERANCES			SCALE:		1-1235		
DEC. DIM. ±		MAXIMUM ALLOWABLE TOLERANCES HAVE BEEN DETERMINED AND ANY DEVIATIONS WILL BE CAUSE FOR REJECTION.					
FRAC. DIM. ± 1/64		REMOVE ALL BURRS AND SHARP EDGES					
ANGULAR DIM. ±							

1	GPT-10,000		11-6-58
REQ. PER UNIT	MODEL	PROJECT NO.	ASS'Y. NO.
USED ON			

REQ. ITEM	PART NO.	DESCRIPTION	SYMBOL
THE TECHNICAL MATERIEL CORP. MAMARONECK, NEW YORK			
STOCK SIZE			
TRANSFORMER, POWER, STEP DOWN, FILAMENT (8.5V)			
MATERIAL			
TYPE & TEMPER		HEAT TREAT. SPEC.	DATE
DRAWN		CHECKED	FINAL APPROVAL
FINISH & SPEC. NO.		ELEC. DES. APP.	MECH. DES. APP.