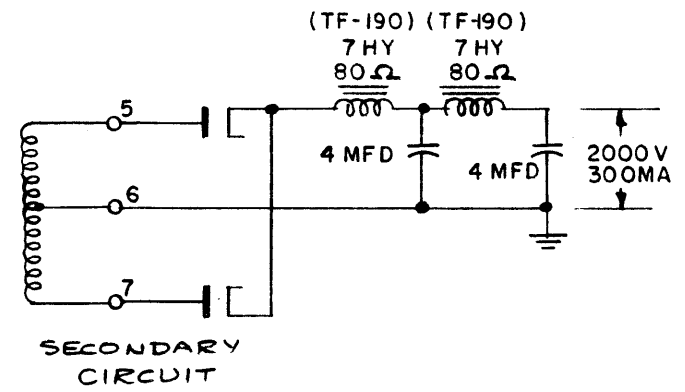
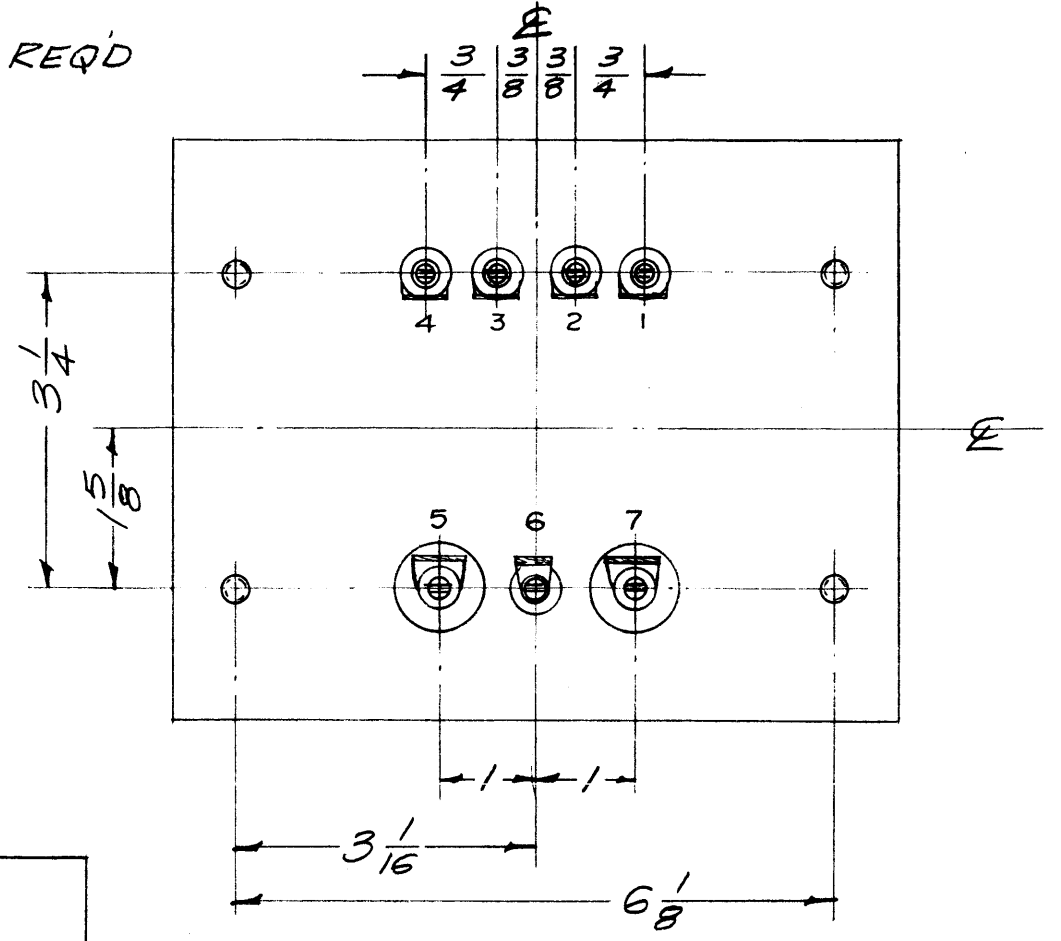
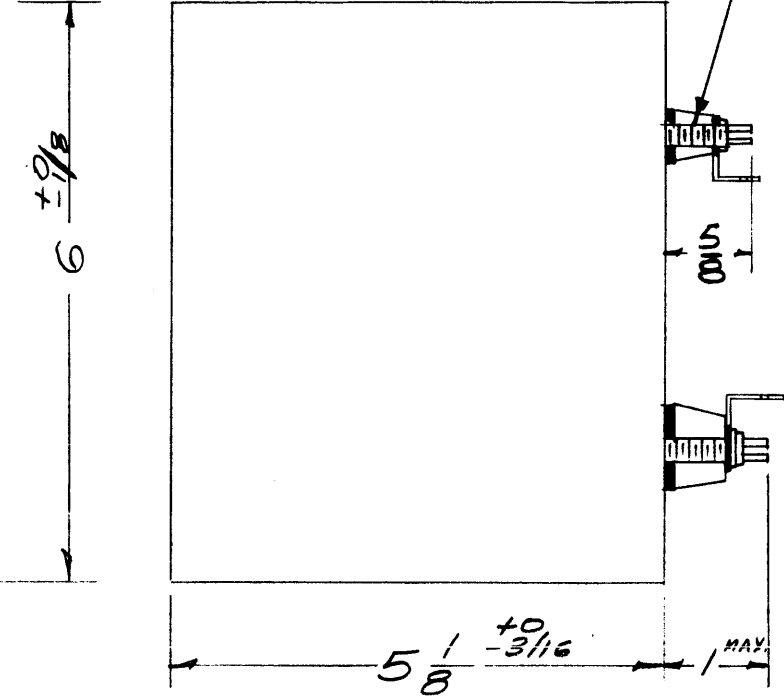
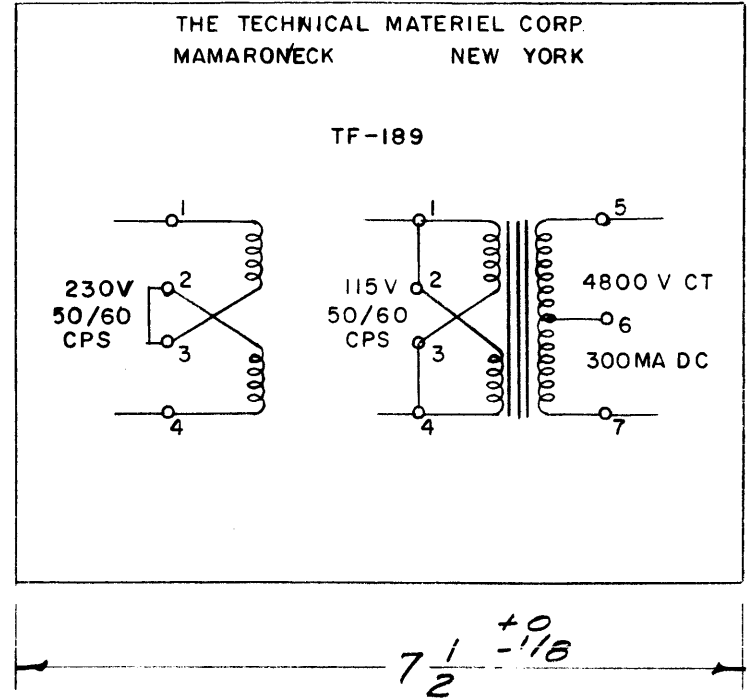


TF-189 B

1/4-20 NC Cl. 2 Thds. x 5/8 ± 1/8 Long. 4 REQ'D



ELECTRICAL SPECIFICATIONS:
 PRIMARY 115/230 VAC, 50/60 CPS, Single Phase.
 SECONDARY 4800 V. CT/300 MA DC.

MECHANICAL SPECIFICATIONS:
 CASE Rectangular, Steel, MIL Type YY, Hermetically Sealed.
 FINISH TMC Smooth Grey Enamel (S-115), except terminal end.
 SIZE 6 X 7-1/2 X 5-1/8 High, excluding studs and terminals.
 STAMPING Terminals shall be metal stamped 1 - 7 as shown.
 Opposite end shall be rubber stamped in black as shown.

NOTE: MANUFACTURED IN ACCORDANCE WITH MIL SPEC T-27-A EXCEPT THAT MIL SPEC T-27-A SHALL NOT APPEAR ON CASE AND QUALIFICATION TESTING IS NOT REQUIRED.

ISSUE	ITEM	CHANGED FROM	DATE	CH. NO.	DRAFTS	CHECKER	ENG. APP.
B	1	TERM. CLARIFIED 5/8 DIM. WAS 13/16	9-27-63	10098			
A	1	NOTE ADDED (MIL-T-27A)	6-29-60	2572			
TOLERANCES			SCALE: 1/2				
DEC. DIM. ±			MAXIMUM ALLOWABLE TOLERANCES HAVE BEEN DETERMINED AND ANY DEVIATIONS WILL BE CAUSE FOR REJECTION. REMOVE ALL BURRS AND SHARP EDGES				
FRAC. DIM. ± 1/64							
ANGULAR DIM. ±							

1	PSP-350	PAL-350	T102	7-21-58
REQ. PER UNIT	MODEL	PROJECT NO.	ASS'Y. NO.	DATE
USED ON				

REQ. ITEM	PART NO.	DESCRIPTION	SYMBOL
		THE TECHNICAL MATERIEL CORP. MAMARONECK. NEW YORK	
STOCK SIZE		TRANSFORMER, POWER, STEP-UP	
MATERIAL			
TYPE & TEMPER	HEAT TREAT. SPEC.	DRAWN	CHECKED
		16 7/21/58	
FINISH & SPEC. NO.		ELEC. DES. APP.	MECH. DES. APP.
		TF-189	B