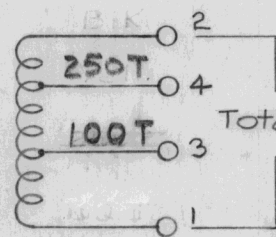
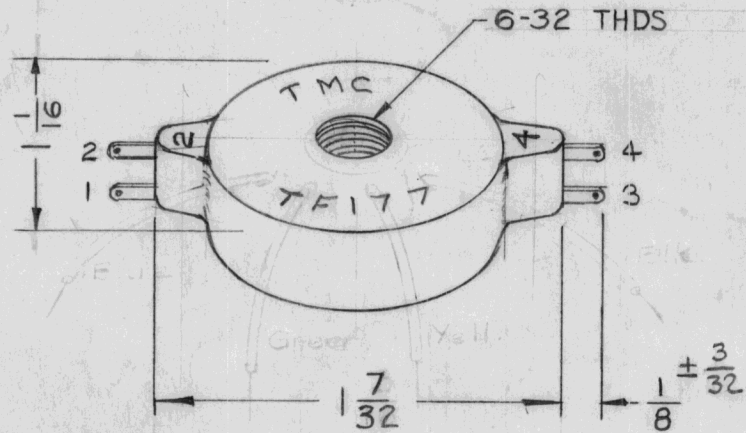


REQ. PER UNIT	USED ON			TF-177	C
	MODEL	ASS'Y. NO.	DATE		
1	A-1381	T3	1-2-58		



Total Inductance = 42.5 to 44.5 mhy.

Q = 20 OR GREATER
 RT = 9.5 TO 11.5 OHMS
 OUTSIDE DIA. - 1 7/32 D. MAX.
 HEIGHT - 1/2 IN.
 UNIT ENCAPSULATED IN PLASTIC

ISSUE	ITEM	CHANGED FROM	DATE	CH. NO.	DRAFTS	CHECKER	ENG. APP.	REQ. ITEM	PART NO.	DESCRIPTION	SYMBOL	
C	1	DIM. 1/8 ± 3/32 WAS 1/8 ± 1/16	8.11.64	11263	ASB	MP				THE TECHNICAL MATERIEL CORP. MAMARONECK, NEW YORK		
B	2	ADDED ± 1/16 TOLERANCE TO 1/8 DIM	3-18-63	8544	RC	JMB			STOCK SIZE			
B	1	1 7/32 DIM. WAS 1 3/16								TRANSFORMER, A. F.		
A	1	COMPLETE PHYSICAL CHANGE	7-26-60	2642	WJ	JCB				(T3)		
TOLERANCES								SCALE: 2A-1382		16 1/2/58	HALE	ATT
DEC. DIM. ±			MAXIMUM ALLOWABLE TOLERANCES HAVE BEEN DETERMINED AND ANY DEVIATIONS WILL BE CAUSE FOR REJECTION.					TYPE & TEMPER	HEAT TREAT. SPEC.	DRAWN	CHECKED	FINAL APPROVAL
FRAC. DIM. ± 1/64			REMOVE ALL BURRS AND SHARP EDGES					"		PLK.		TF-177
ANGULAR DIM. ±								FINISH & SPEC. NO.		ELEC. DES. APP.	MECH. DES. APP.	C