

REQ. PER UNIT	USED ON		
	MODEL	ASS'Y. NO.	DATE
2	SBE-1		6-10-57
2	SBE-2		5-5-58
2	SBE-3	AX-205	12-2-59

TF-170

B

RECOMMENDED APPLICATION: MIXING AND MATCHING

Military Type: TF4RX16YY

Primary Impedance ohms: 150/600

Secondary Impedance ohms: 600 CT

DC in Primary MA. = 0

Response  $\pm$  2 db (CYC): 50 - 10,000

Maximum Level dbm: + 8

Ratio of turns overall primary to overall secondary 1-1

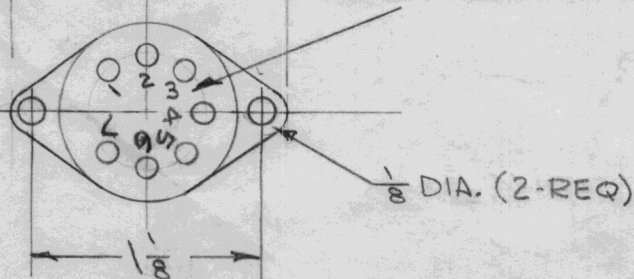
Terminals: 7 Solder lug type

Case: Hermetically sealed

Finish: Smooth gray enamel (TMC Specification S-115)

NOTE  
TRANSFORMER NO. AND  
SCHEMATIC TO BE STAMPED  
ON SIDE OF CAN AS SHOWN.

Metal Stamp  
Terminals As Shown



WINDING	IMPEDANCE (OHMS)	CONNECT TO	JOIN
PRIMARY	600	1 & 4	2 & 3, C.T.
	150	1 & 4	3 & 4, 1 & 2
SECONDARY	600	5 & 7	6 C.T.

Ref: United Transformer Supply H878 Case RC25

REQ.	ITEM	PART NO.	DESCRIPTION	SYMBOL										
			THE TECHNICAL MATERIEL CORP. MAMARONECK, NEW YORK											
B	1	ON PICTORIAL, (2) 1/8 DIA HOLES WERE 1/8 x 5/32 SLOTS	3-7-63 8447											
A	1	TF4RX16YY WAS TFA16YY	7/27/60 3089											
ISSUE	ITEM	CHANGED FROM	DATE	CH. NO.	DRAFTS	CHECKER	ENG. APP.	MATERIAL	TYPE & TEMPER	HEAT TREAT. SPEC.	DRAWN	CHECKED	FINAL APPROVAL	
TOLERANCES			SCALE: S401-29											
DEC. DIM. $\pm$ FRAC. DIM. $\pm$ ANGULAR DIM. $\pm$			MAXIMUM ALLOWABLE TOLERANCES HAVE BEEN DETERMINED AND ANY DEVIATIONS WILL BE CAUSE FOR REJECTION. REMOVE ALL BURRS AND SHARP EDGES											
FINISH & SPEC. NO.										ELEC. DES. APP.		MECH. DES. APP.		TF-170