

IF IT IS FOUND DESIRABLE TO CHANGE ANY TOLERANCE OR OTHER DETAIL SPECIFIED ON THIS DRAWING NOTIFY THE PURCHASER PROMPTLY.

TF-121

B

MAXIMUM ALLOWABLE TOLERANCES HAVE BEEN DETERMINED AND DEVIATIONS WILL BE CAUSE FOR REJECTION. REMOVE ALL BURRS AND SHARP EDGES

USED ON

MODEL

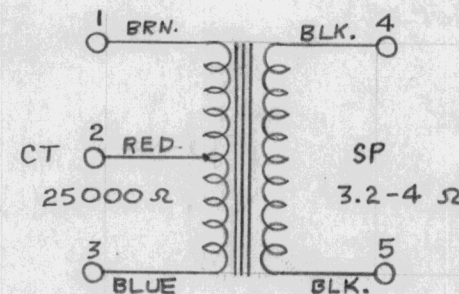
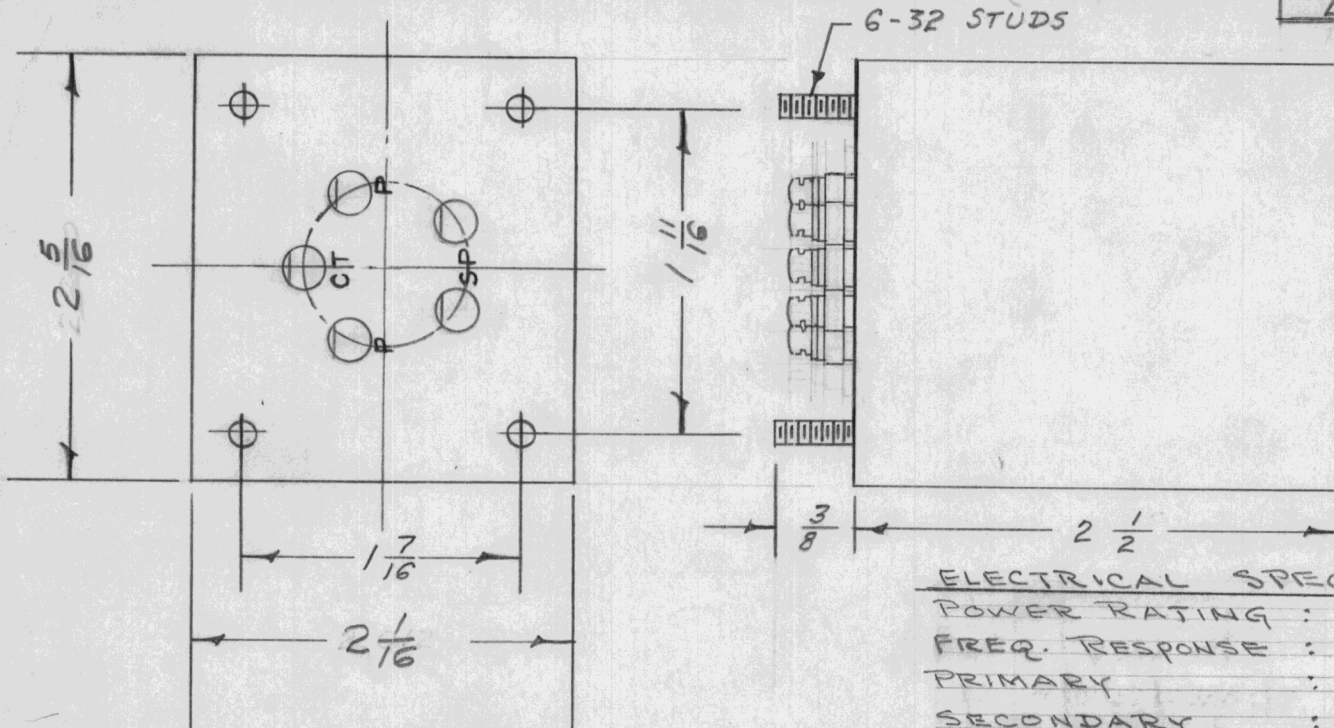
PROJECT NO.

ASS'Y. NO.

DATE

LSP

1-6-54



ELECTRICAL SPECIFICATIONS:

POWER RATING : 3W  
 FREQ. RESPONSE : 100 TO 10,000 CPS  
 PRIMARY : 12,000 TO 25,000 Ω CT  
 SECONDARY : 3.2 TO 4 Ω  
 PRIMARY CURRENT : 8MA DC MAX.

MECHANICAL SPECIFICATIONS:

1. CASE - ALUMINUM.
2. TERMINALS - CERAMIC
3. FILLER - COMPOUND
4. FINISH - GREY
5. STUDS - 6-32 X 3/8

REQ.	ITEM	PART NO.	DESCRIPTION	SYMBOL
			<b>THE TECHNICAL MATERIEL CORP.</b>	
			MAMARONECK, NEW YORK	
			TRANSFORMER, OUTPUT	
			TF-121	
			6-1-6-54	G.T.O
			DRAWN	ELEC. DES. APP. MECH. DES. APP.
			CHECKED	FINAL APPROVAL
				TF-121
				B

B	1	DIM. CHANGED FROM 2.012 X 2.240 TO 2-1/16 X 2-5/16 AS PER BX-108	1/9/58	2	16	HAR	APP
A	1	ELEC. SPECS Added	11/2/54	1		HAR	G.T.O
ISSUE	ITEM	CHANGED FROM	DATE	CN. NO.	DRAFTS	CHECKER	ENG. APP.

TOLERANCES

SCALE 4A-391

ALL OTHERS  
 DEC. DIM. ±  
 FRAC. DIM. ±  
 ANGULAR DIM. ±

A

DRILL, PUNCH, COMMERCIAL STOCK SIZES AND MANUFACTURERS TOLERANCES ARE NOT INCLUDED.