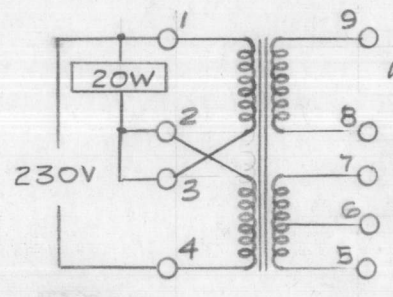
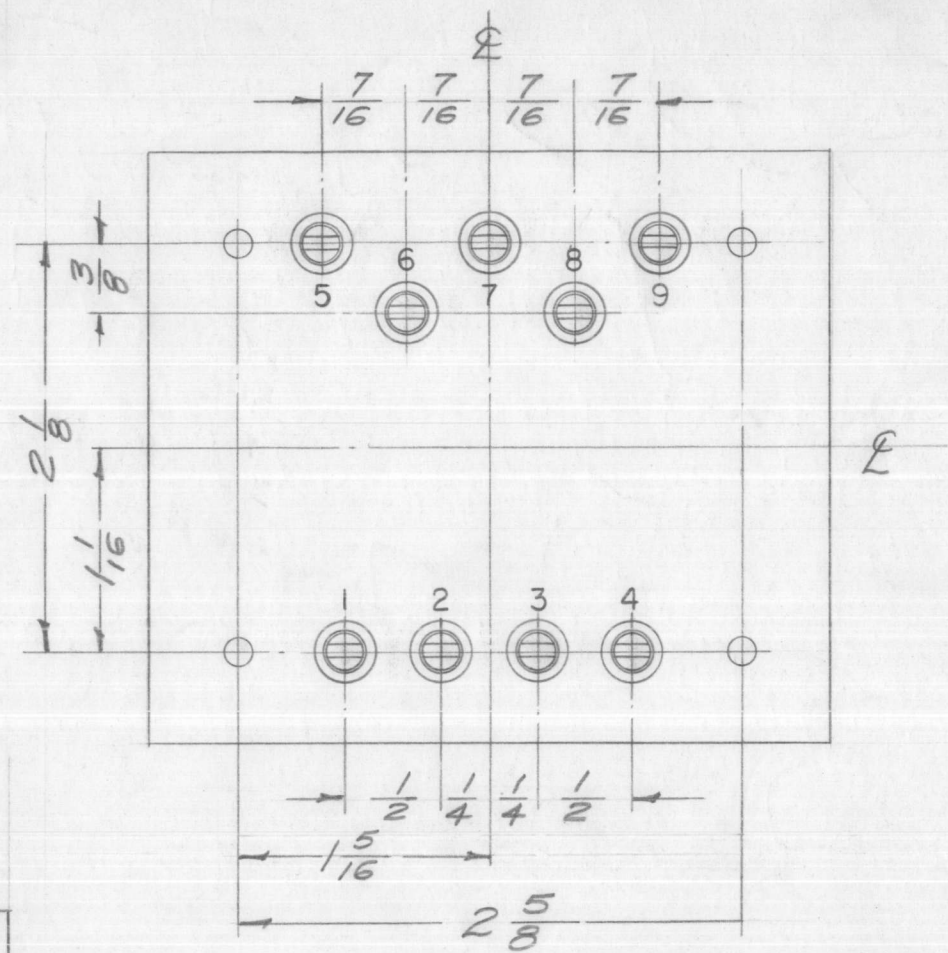
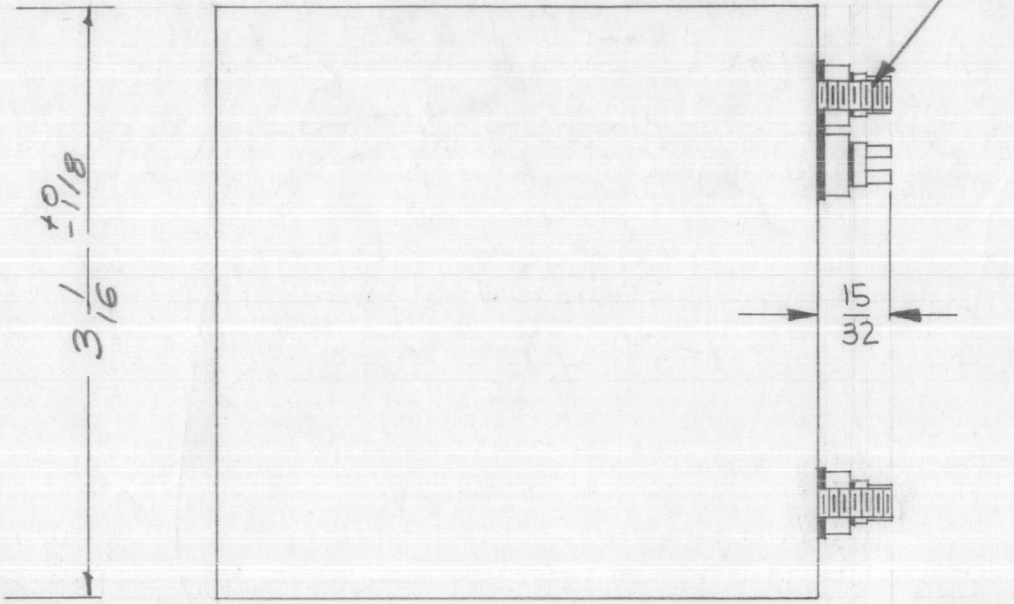
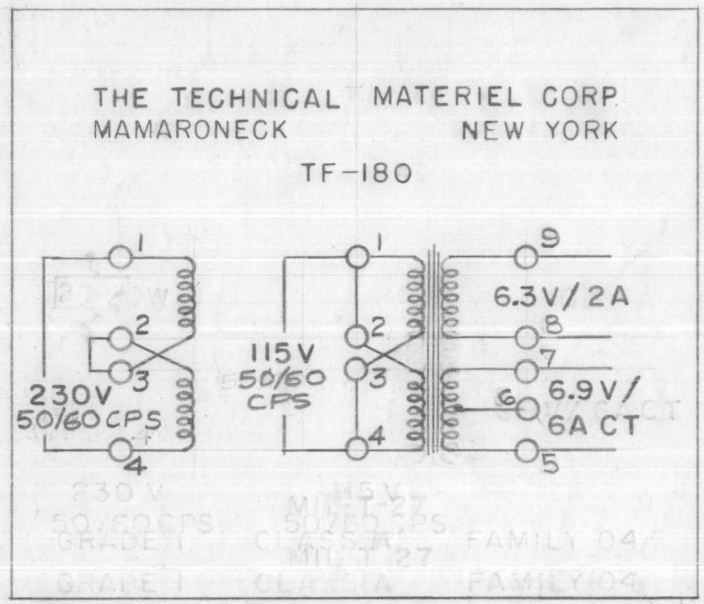


TF-180 C



NOTE - IMPORTANT
When Connected to a 230V Line, the primary must also act as an Auto-Transformer and supply an additional load of 20W at 115 VAC as shown.

ELECTRICAL SPECIFICATIONS:
 Primary - 115/230 VAC, 50/60 CPS, Single Phase
 Secondary - 6.3V/2A & 6.9V/6A, CT.
 Insulation - Winding shall be insulated for 1500V.

MECHANICAL SPECIFICATIONS:
 Case - Rectangular Steel, MIL Type JB Modified, Hermetically Sealed.
 Finish - TMC Smooth Grey Enamel (5115), Except terminal End.
 Size - 3 1/16 x 3 9/16 x 3 high, excluding studs and terminals
 Stamping - Terminals shall be metal stamped 1 to 9 as shown. Opposite end shall be rubber stamped in black as shown.

NOTE: MANUFACTURED IN ACCORDANCE WITH MIL SPEC T-27-A EXCEPT THAT MIL SPEC T-27-A SHALL NOT APPEAR ON CASE AND QUALIFICATION TESTING IS NOT REQUIRED.

ISSUE	ITEM	CHANGED FROM	DATE	CH. NO.	DRAFTS	CHECKER	ENG. APP.
C	1	ADDED 15/32 DIM. #4 REQ'D DELETED 3/8 ± 1/16 DIM	9/26/63	10055	RD	JAG	JAG
B	2	TERM NOS 5 THRU 9 WERE REVERSED	6-5-63	9180	E	JAG	JAG
A	1	NOTE ADDED (MIL T-27-A)	6-29-60	2572			H

ISSUE ITEM CHANGED FROM DATE CH. NO. DRAFTS CHECKER ENG. APP.

TOLERANCES SCALE: FULL

DEC. DIM. ±
 FRAC. DIM. ± 1/64
 ANGULAR DIM. ±

MAXIMUM ALLOWABLE TOLERANCES HAVE BEEN DETERMINED AND ANY DEVIATIONS WILL BE CAUSE FOR REJECTION.
 REMOVE ALL BURRS AND SHARP EDGES

Transformer shall be in acc. with MIL-T-27A and Appendix, Grade 1, Class A, Fam. 04. MIL Type TF1RXCNB

1	RFA-1	PAL-350	7/10/58
REQ. PER UNIT	MODEL	PROJECT NO.	ASS'Y. NO.
			DATE

USED ON

REQ. ITEM	PART NO.	DESCRIPTION	SYMBOL
		THE TECHNICAL MATERIEL CORP. MAMARONECK. NEW YORK	
		TRANSFORMER, POWER, STEP DOWN	
		167/10/58 JAG	A.J.J.
		TYPE & TEMPER HEAT TREAT. SPEC. DRAWN CHECKED FINAL APPROVAL	
		FINISH & SPEC. NO. ELEC. DES. APP. MECH. DES. APP.	TF-180