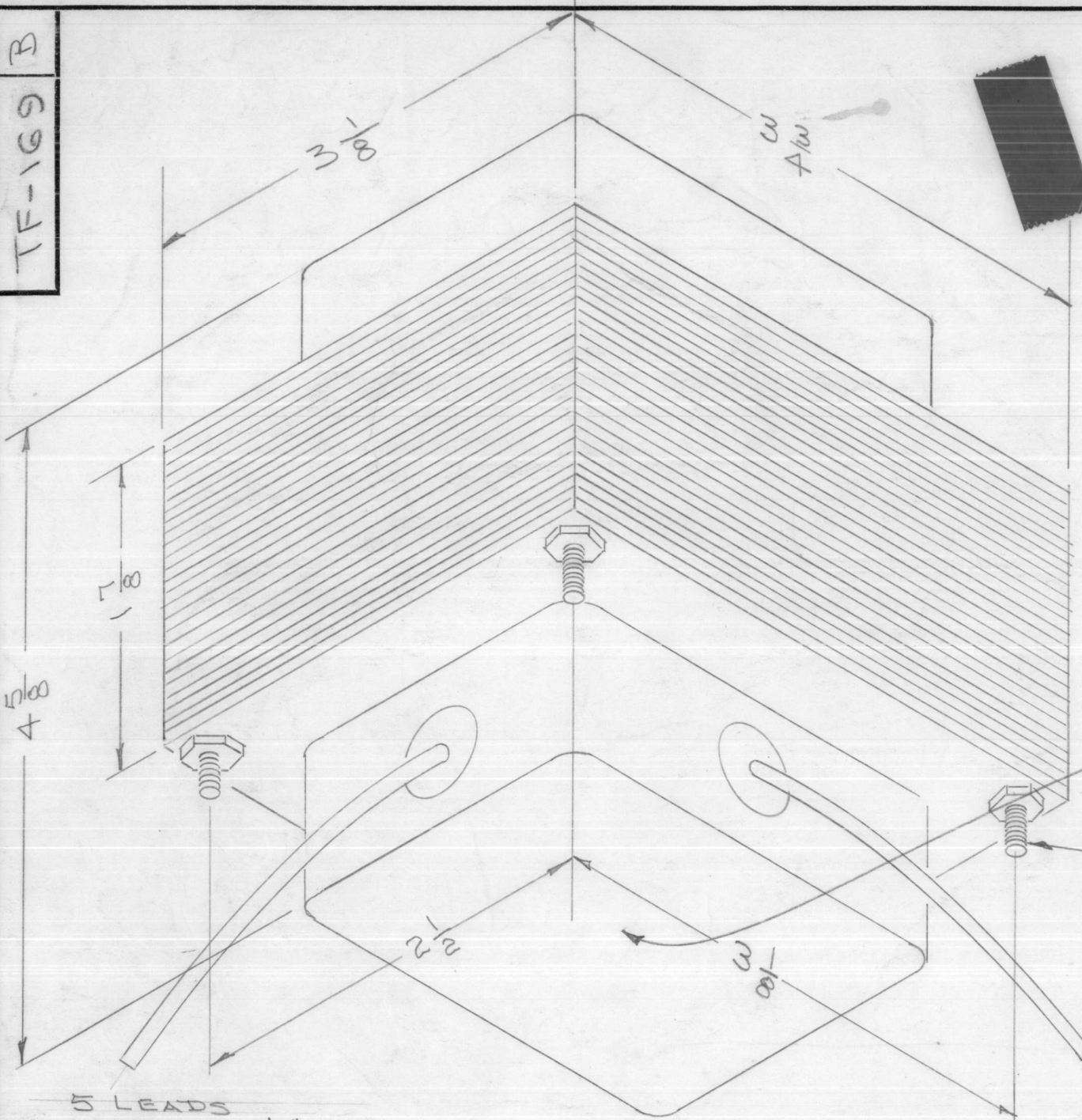


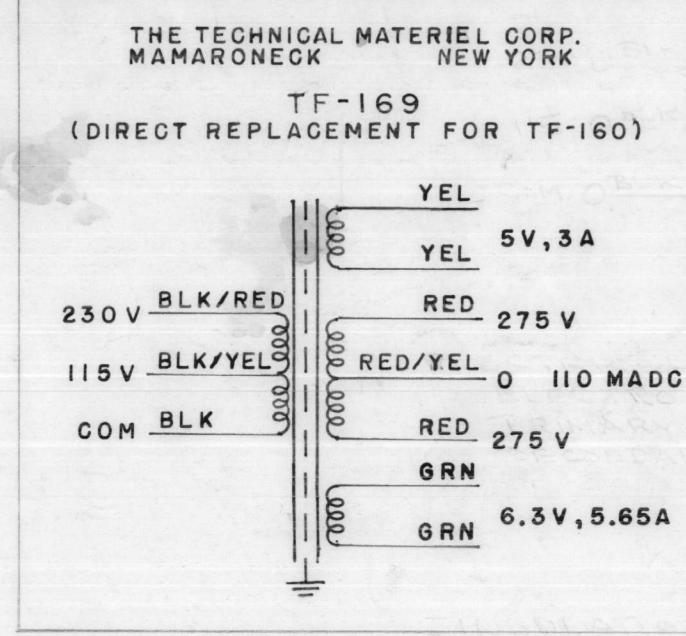
TF-169 B



- 5 LEADS
- 1 BLACK 5 1/2" LONG
 - 1 BLK/YEL 4 1/2" "
 - 1 BLK/RED 4 1/2" "
 - 2 GREEN 4 1/2" "

- 5 LEADS
- 1 RED 5 1/2" LONG
 - 1 RED 4 1/2" "
 - 1 YELLOW 5" "
 - 1 YELLOW 4" "
 - 1 RED/YEL 3 1/2" "

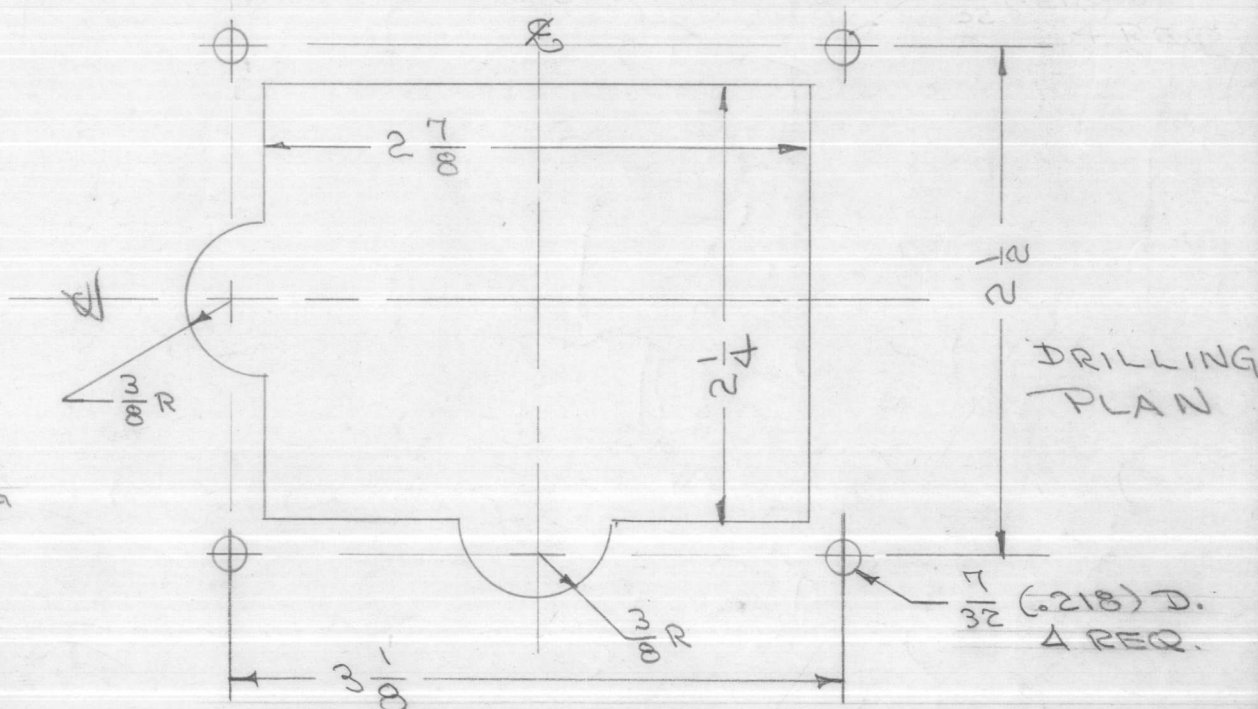
8-32 x 3/8 STUDS



SCHEMATIC DIAGRAM TO BE IN BLACK,
PLACED THIS END.

ELECTRICAL SPECIFICATIONS:

ELECTRO STATIC SHIELD
PRI. INPUT - 115/230V, 50/60 ~
SEC - 5V @ 3A
275-0-275 V RMS WITH
FULL WAVE RECTIFIER
5U4G TO CAPACITOR
INPUT FILTER 275 VDC
AT 110 MA.
6.3 V @ 5.65 A
INSULATION TEST - 1000V.



NOTE:
LEAD LENGTHS SHOWN ARE TOTAL
LENGTHS, STRIP 3/4" & TIN.

ISSUE	ITEM	CHANGED FROM	DATE	CH. NO.	DRAFTS	CHECKER	ENG. APP.
B	1	SCHEMATIC ADDED	10/15/56	2	CRD	P.L.X.	A.J.J.
A	2	BLK/YEL & BLK/RED were 9"	9/9/56	1	JAR	P.L.X.	A.J.J.
A	1	BLACK was 9"					
TOLERANCES			SCALE:				
DEC. DIM. ±			MAXIMUM ALLOWABLE TOLERANCES HAVE				
FRAC. DIM. ±			BEEN DETERMINED AND ANY DEVIATIONS				
ANGULAR DIM. ±			WILL BE CAUSE FOR REJECTION.				
A			REMOVE ALL BURRS AND SHARP EDGES				

1	GPR	297	9-7-56
REQ. PER UNIT	MODEL	PROJECT NO.	ASS'Y. NO.
USED ON			

REQ. ITEM	PART NO.	DESCRIPTION	SYMBOL
STOCK SIZE		THE TECHNICAL MATERIEL CORP. MAMARONECK. NEW YORK	
MATERIAL		TRANSFORMER, POWER	
TYPE & TEMPER		DRAWN	CHECKED
HEAT TREAT. SPEC.		JAR	CRD
FINISH & SPEC. NO.		FINAL APPROVAL	
(S115) TMC GRAY		P.L.X.	UR
ELEC. DES. APP.		MECH. DES. APP.	
TF-169 B			