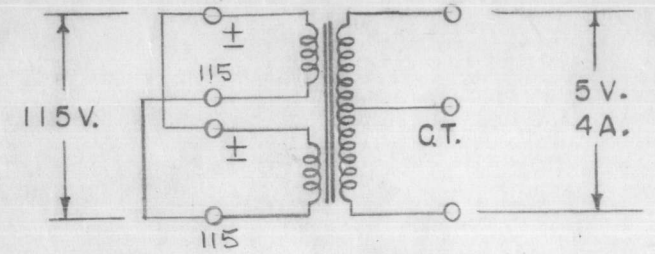
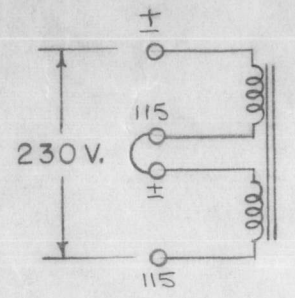
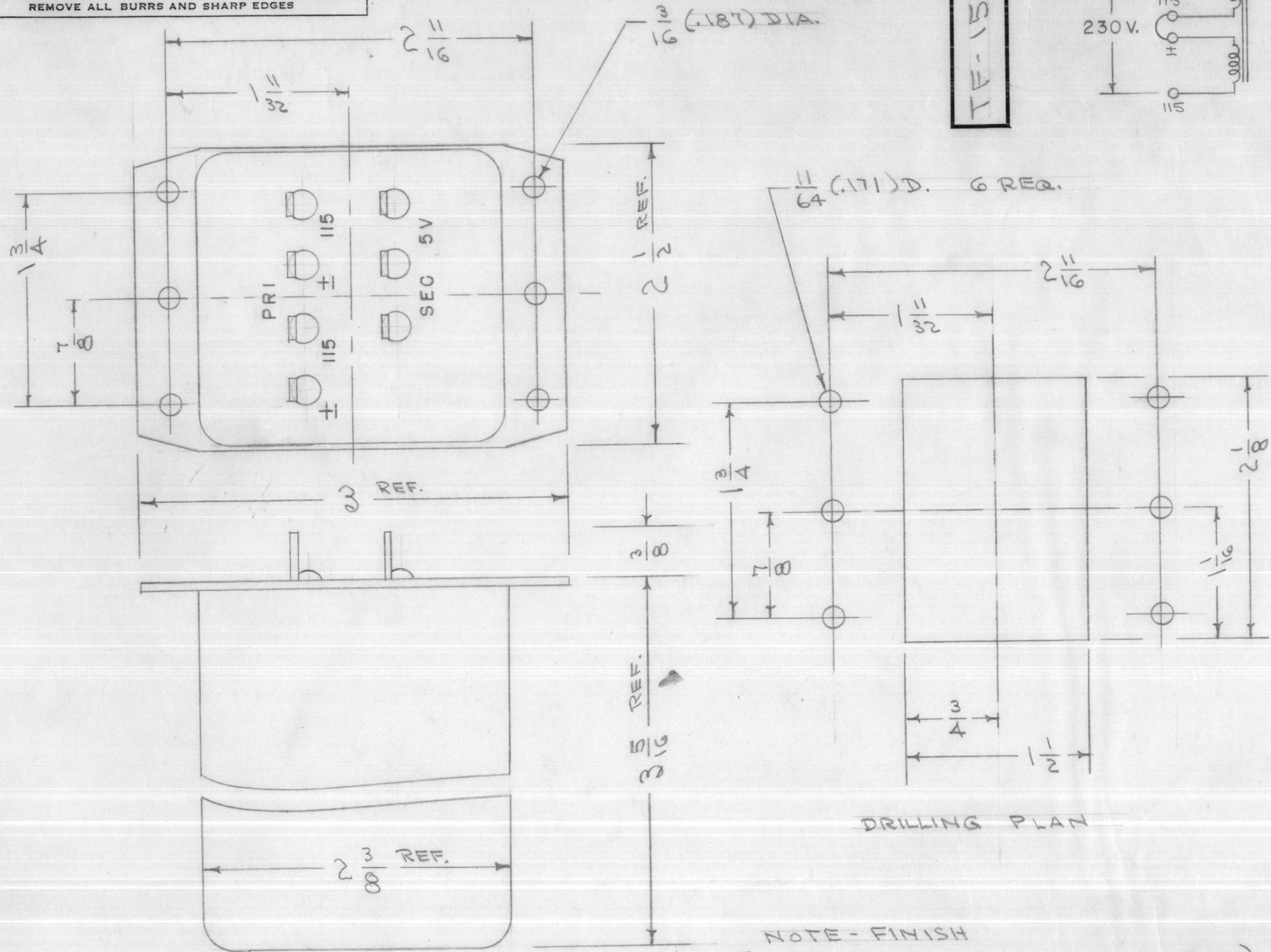


IF IT IS FOUND DESIRABLE TO CHANGE ANY TOLERANCE OR OTHER DETAIL SPECIFIED ON THIS DRAWING NOTIFY THE PURCHASER PROMPTLY.

MAXIMUM ALLOWABLE TOLERANCES HAVE BEEN DETERMINED AND DEVIATIONS WILL BE CAUSE FOR REJECTION. REMOVE ALL BURRS AND SHARP EDGES

TF-153 A



PRI.-115/230 V 50/60 CPS SINGLE PHASE  
SEC.-5.0 V @ 4.0 AMPS.

NOTE:  
CASE - METAL  
MTG - HOLES

DRILLING PLAN

NOTE - FINISH  
{ PAINT - S-115 SMOOTH GREY ENAMEL }  
{ STAMP TOP - TF-153 }

BOTH PROCESSES TO BE PERFORMED EITHER BY TMC OR MANUFACTURER AT DISCRETION OF THE PURCHASING AGENT.

REF. CHICAGO TRANS. DIV. (ESSEX WIRE CORP.) TYPE F-54

REQ. ITEM	PART NO.	DESCRIPTION	SYMBOL
		THE TECHNICAL MATERIEL CORP. MAMARONECK, NEW YORK	
STOCK SIZE		TRANSFORMER, FIL. POWER	
MATERIAL	WEIGHT PER PC.		
TYPE & TEMPER		CDD. 10/18/54	WJ
HEAT TREAT. SPEC.		DRAWN	ELEC. DES. APP. MECH. DES. APP.
SEE NOTE		checked	A. J. J.
FINISH & SPEC. NO.		CHECKED	FINAL APPROVAL
		TF-153 A	

A	1	NOTE ADDED	9-2-55	1	11	WJ	A.J.J.
ISSUE	ITEM	CHANGED FROM	DATE	CN. NO.	DRAFTS	CHECKER	ENG. APP.
TOLERANCES			SCALE:				
ALL OTHERS	DEC. DIM. ±	A	DRILL, PUNCH, COMMERCIAL STOCK SIZES AND MANUFACTURERS TOLERANCES ARE NOT INCLUDED.				
	FRAC. DIM. ±						
	ANGULAR DIM. ±						

1	FFR-DPH	333	A-854	10-18-54
PPR	MODEL	PROJECT NO.	ASS'Y. NO.	DATE
UNIT	USED ON			