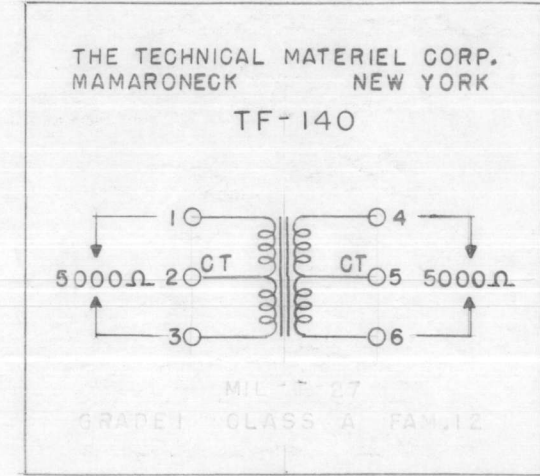
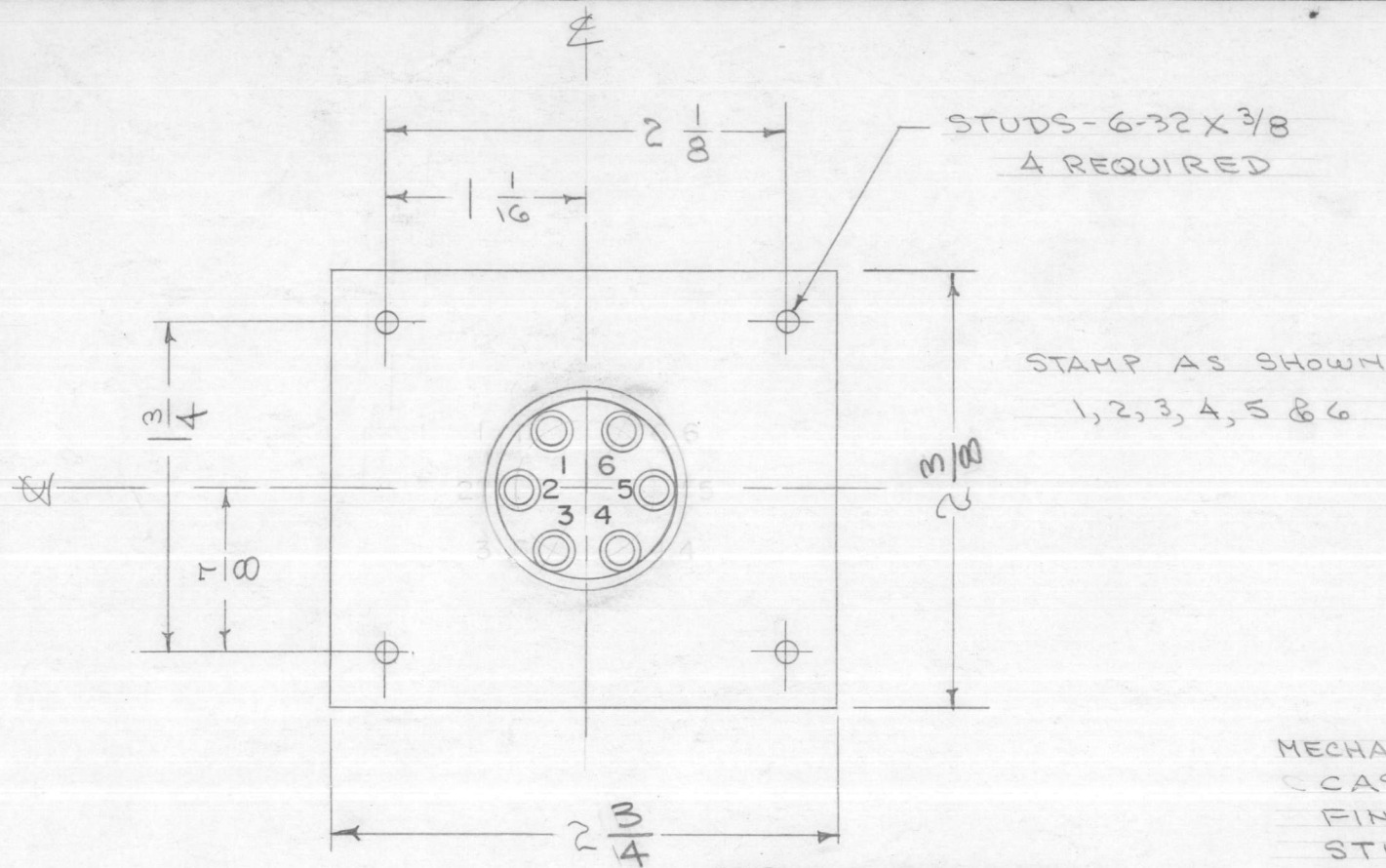


TF-140 C

SCHEMATIC TO APPEAR ON END OPPOSITE TERMINALS



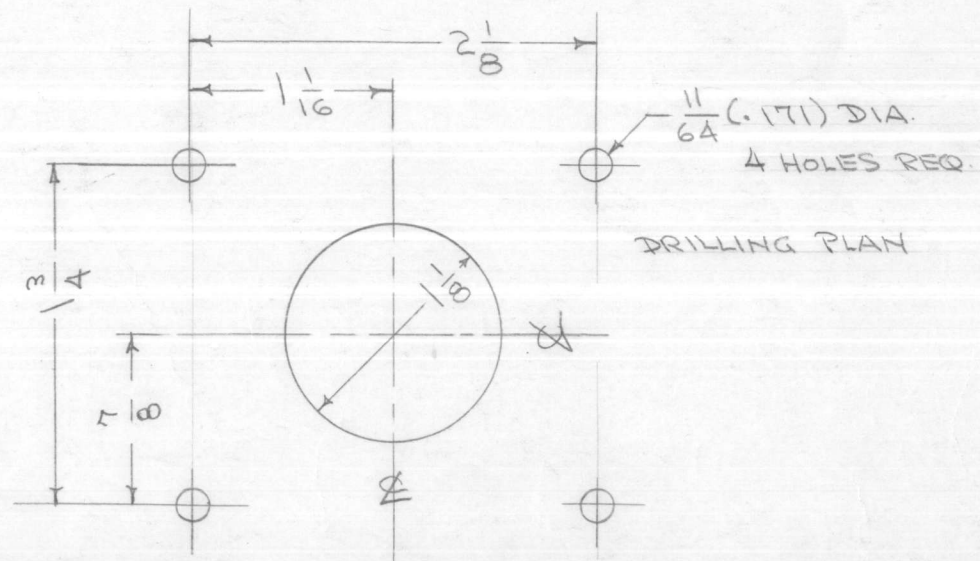
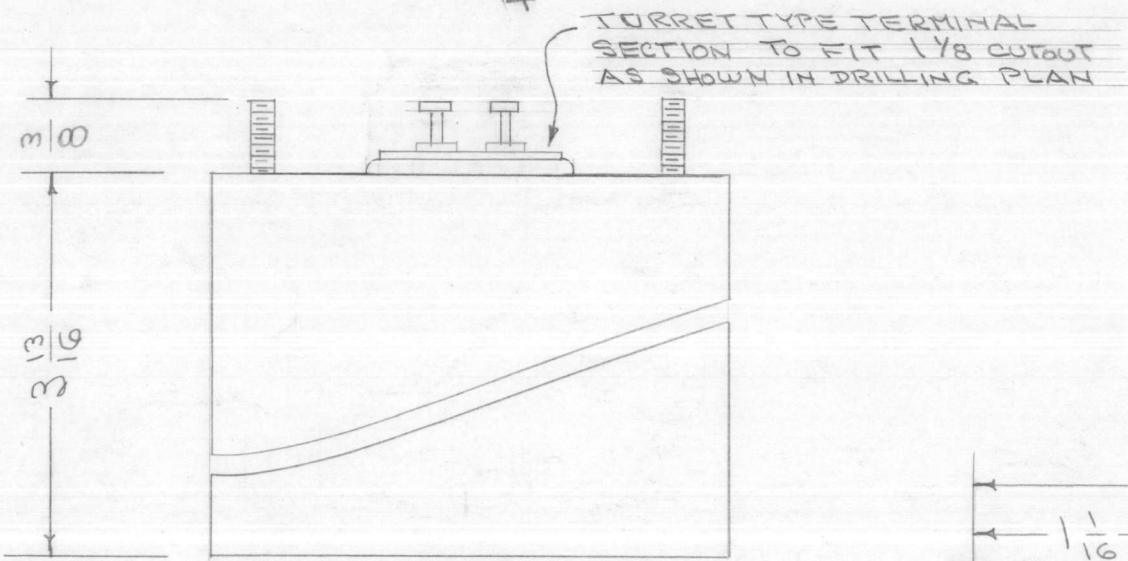
MECHANICAL SPECIFICATIONS

- CASE - HERMETICALLY SEALED RECTANGULAR STEEL CASE
- FINISH - S-115 TMC SMOOTH GRAY ENAMEL (EXCEPT TERM. END)
- STUDS - 6-32 X 3/8 LONG
- SIZE - 2 5/16 X 2 1/16 X 3 13/16 EXCLUSIVE OF TERMINALS

ELECTRICAL SPECIFICATIONS

- PRIMARY - 5000 OHM CENTER TAPPED. TO OPERATE WITH PP 6L6's IN CLASS A. PRIMARY D.C. - 150 MA BALANCED.
- SECONDARY - 5000 OHM CENTER TAPPED. TO OPERATE INTO PP 810 GRIDS CLASS B. SEC. DC - 50 MA BALANCED
- FREQ. RESPONSE - FLAT ±2db FROM 50 TO 15,000 ~.
- NOM. POWER LEVEL - 10 WATT OUTPUT
- EFFICIENCY - AT LEAST 95%
- INSULATION - ALL WINDINGS SHALL BE INSULATED FOR 1500V.

NOTE: MANUFACTURED IN ACCORDANCE WITH MIL SPEC T-27-A EXCEPT THAT MIL SPEC T-27-A SHALL NOT APPEAR ON CASE AND QUALIFICATION TESTING IS NOT REQUIRED.



ISSUE ITEM	CHANGED FROM	DATE	CH. NO.	DRAFTS	CHECKER	ENG. APP.
C 1	NOTE ADDED (MIL T-27-A)	6-29-60	2572			KS
B 1	DIM. CHGD FROM 2-5/16 X 2-11/16 TO 2-3/8 X 2-3/4 AS PER BX-100-9	1/3/58	2		KS	AK
A 1	TERM. INFO. ADDED	11-1-55	1		NCW	AJJ
TOLERANCES		SCALE:				
DEC. DIM. ±	A	MAXIMUM ALLOWABLE TOLERANCES HAVE BEEN DETERMINED AND ANY DEVIATIONS WILL BE CAUSE FOR REJECTION. REMOVE ALL BURRS AND SHARP EDGES				
FRAC. DIM. ±						
ANGULAR DIM. ±						

1	RTM-2			10-16-58
1	RTM			10-13-55
REQ. PER UNIT	MODEL	PROJECT NO.	ASS'Y. NO.	DATE
USED ON				

REQ. ITEM	PART NO.	DESCRIPTION		SYMBOL
		THE TECHNICAL MATERIEL CORP. MAMARONECK. NEW YORK		
	STOCK SIZE	TRANSFORMER, AUDIO DRIVER		
	MATERIAL	GPT-750		
		ADD 10/13/55	AK	A.J.J.
	TYPE & TEMPER	HEAT TREAT. SPEC.	DRAWN	CHECKED
			AK	AK 10/26/55
	FINISH & SPEC. NO.	ELEC. DES. APP.	MECH. DES. APP.	TF-140 C