

IF IT IS FOUND DESIRABLE TO CHANGE ANY TOLERANCE OR OTHER DETAIL SPECIFIED ON THIS DRAWING NOTIFY THE PURCHASER PROMPTLY.

RELEASED

MAXIMUM ALLOWABLE TOLERANCES HAVE BEEN DETERMINED AND DEVIATIONS WILL BE CAUSE FOR REJECTION. REMOVE ALL BURRS AND SHARP EDGES

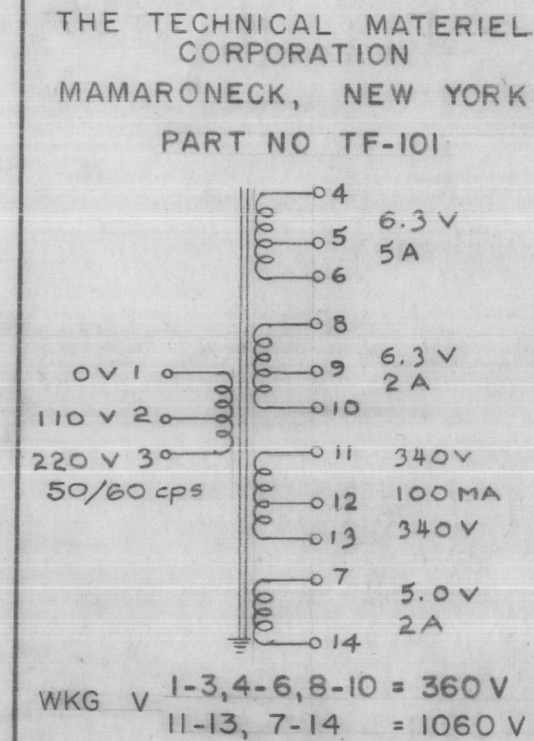
**POWER TRANSFORMER TF-101**

**A. ELECTRICAL SPECIFICATIONS:**

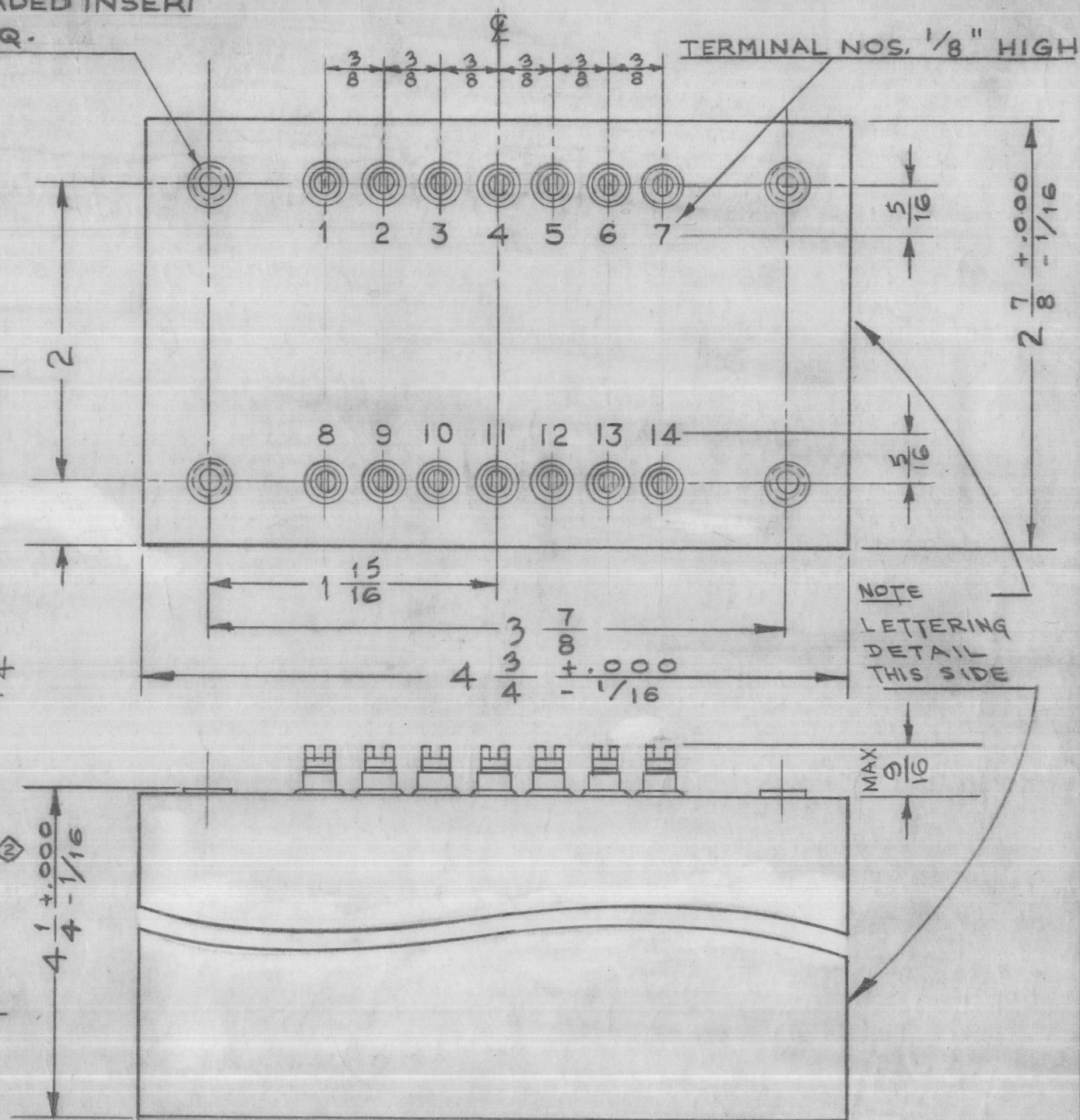
- Primary: 110/220 volts 50/60 cycles- single phase.
- Secondary #1: 6.3V center tapped at 5 amps.
- Secondary #2: 6.3V center tapped at 2 amps.
- Secondary #3: 340-0-340 RMS, 100 ma d.c. operating into 4 mfd. capacity input filter.
- Secondary #4: 5.0V at 2 amps.
- Insulation: All windings insulated for 1000 volts.
- Heat Rise: Max temperature rise + 40°C

**B. MECHANICAL SPECIFICATIONS:**

- Case: Hermetically sealed in rectangular steel case.
- Finish: Smooth dark gray enamel, Navy Spec. 52E4 Type C, gloss 35-40 units, or equal.
- Terminals: 3/8" long o/a, Solder lugs and ceramic bushings shall be used located on mounting end.
- Size: Exclusive of terminals:-  
2 7/8 x 4 1/4 x 4 3/4
- Lettering: Lettering detail to appear on side shown. Name and Part Number shall appear on the opposite side. Terminals shall be metal stamped 1 to 14 as shown.



10-32 X 1/2 DP, THREADED INSERT  
4 REQ.



LETTERING DETAIL

Case unit shall be constructed in accordance with MIL-T-27 Grade 1, Class A, Family B3.

NOTE ~ MANUFACTURED IN ACCORDANCE WITH MIL-SPEC T-27A EXCEPT THAT MIL-SPEC T-27A SHALL NOT APPEAR ON CASE & QUALIFICATION TESTING IS NOT REQ.

ISSUE	ITEM	CHANGED FROM	DATE	CN. NO.	DRAFTS	CHECKER	ENG. APP.
F	1	9/16 MAX WAS 3/8	9-9-53	9916	AR	9MB	WDC
E	1	NOTE ADDED (MIL-T-27-A)	6/30/50	2572	SPM	file	WDC
D	1	50/60 cps Added	2/13/50	4	KS	P.S.K.	A.J.J.
C	3	LETTERING NOTE ADDED	7-24-53	3	JAD	PMB	PMB
B	2	TOLERANCES ADDED	10/21/52	2	JAD	JAD	TH
A	1	340-0-340 was 350-0-350	6/30/52	1	JAD	JAD	9MB

TOLERANCES		SCALE:	
ALL OTHERS	DEC. DIM. ± FRAC. DIM. ± ANGULAR DIM. ±	A	DRILL, PUNCH, COMMERCIAL STOCK SIZES AND MANUFACTURERS TOLERANCES ARE NOT INCLUDED.

FFR-2	104	A-121	6-19-52
MODEL	PROJECT NO.	ASS'Y. NO.	DATE

REQ.	ITEM	PART NO.	DESCRIPTION	SYMBOL
//			THE TECHNICAL MATERIEL CORP. MAMARONECK, NEW YORK	
//			POWER TRANSFORMER	
MATERIAL		WEIGHT PER PC.		
TYPE & TEMPER				
HEAT TREAT. SPEC.				
FINISH & SPEC. NO.				
DRAWN		ELEC. DES. APP.	MECH. DES. APP.	
CHECKED		FINAL APPROVAL		
		TF-101 F		