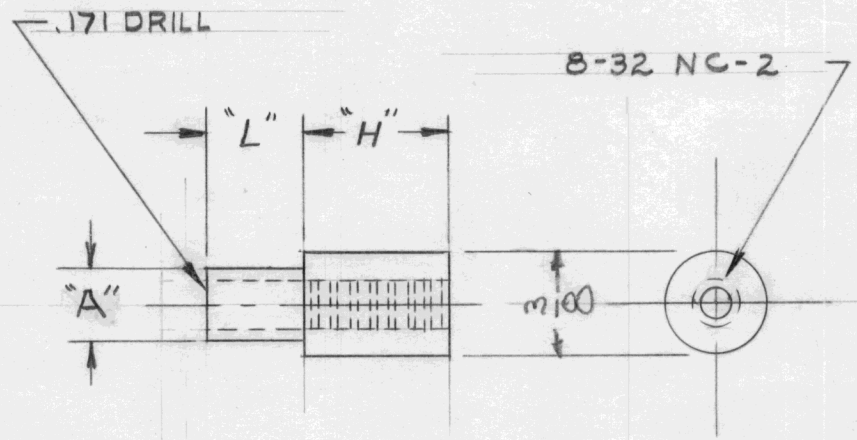


REQ. PER UNIT	USED ON			TE-174	A
	MODEL	ASS'Y. NO.	DATE		
4	CAB-7	TE-174-1	10-24-58		

TMC NO.	CAT. NO.	"L" SHANK	MTG. THICKNESS	"H"	MTG. HOLE	"A"
TE-174-1		7/64	.064	1/2	7/32	7/32
TE174-2	9573C- B-0832-4	.135	.081	1/8	.234 ^{+0.003} -.000	.234 ^{+0.000} -.003

STANDARD DRAWING



A	4	STD. DWG STAMP ADDED	4.				
	3	TE174-2 ADDED	30.	139			
	2	"A" DIM ADDED TO CHART	65	32			
	1	FINISH WAS S105					
ISSUE	ITEM	CHANGED FROM	DATE	CH. NO.	DRAFTS	CHECKER	ENG. APP.
TOLERANCES			SCALE:				
DEC. DIM. ±			MAXIMUM ALLOWABLE TOLERANCES HAVE BEEN DETERMINED AND ANY DEVIATIONS WILL BE CAUSE FOR REJECTION.				
FRAC. DIM. ±			REMOVE ALL BURRS AND SHARP EDGES				
ANGULAR DIM. ±							

REQ. ITEM	PART NO.	DESCRIPTION	SYMBOL
		THE TECHNICAL MATERIEL CORP. MAMARONECK. NEW YORK	
	STOCK SIZE	SPACER, STANDOFF	
	MATERIAL	RIVET TYPE 8-32	
		JORILLO	
	TYPE & TEMPER	DRAWN	CHECKED
	HEAT TREAT. SPEC.		FINAL APPROVAL
	S135 - NICKEL PLATE		TE-174
	FINISH & SPEC. NO.	ELEC. DES. APP.	MÉCH. DES. APP.
			A