

IF IT IS FOUND DESIRABLE TO CHANGE ANY TOLERANCE OR OTHER DETAIL SPECIFIED ON THIS DRAWING NOTIFY THE PURCHASER PROMPTLY.

# STANDARD DRAWING

TE-137

MAXIMUM ALLOWABLE TOLERANCES HAVE BEEN DETERMINED AND DEVIATIONS WILL BE CAUSE FOR REJECTION.  
REMOVE ALL BURRS AND SHARP EDGES

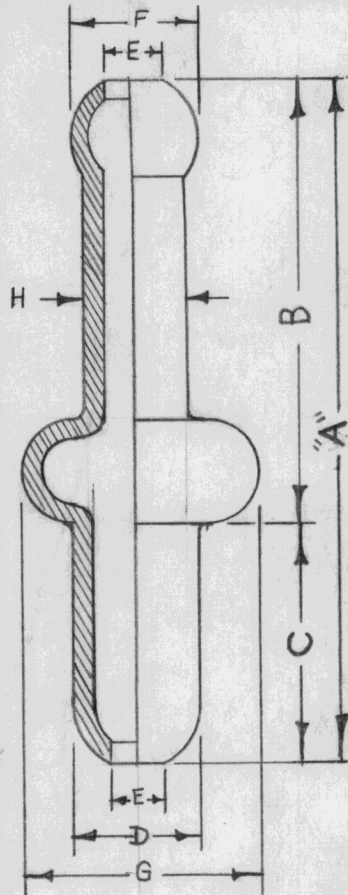
USED ON

MODEL

PROJECT NO.

ASS'Y. NO.

DATE



DWG.	T.M.C. NO.	CAT. NO.	LENGTH	BODY LENGTH	STAKING LENGTH	STAKING DIA.	HOLE SIZE	END BEAD DIA.	SHOULDER BEAD DIA.	BODY DIA.	TERM. STYLE	PANEL THICKNESS
			A	B	C	D	E	F	G	H		
	TE-137-1	T84-1	.381	.266	.115	.093	.046	.100	.125	.084	2 BEADS	3/64 TO 5/64
	TE-137-2	T84-2	.406	.266	.140	.093	.046	.100	.125	.084	2 BEADS	5/64 TO 7/64
	TE-137-3	T100-9	.422	.282	.140	.112	.048	.120	.156	.100	2 BEADS	5/64 TO 7/64
	TE-137-4	T100-8	.427	.282	.145	.093 SQ.	.048	.120	.156	.100	2 BEADS SQ. END	5/64 TO 7/64
	TE-137-5	T100-3	.600	.460	.140	.112	.048	.120	.156	.100	3 BEADS	5/64 TO 7/64
	TE-137-6	T110-7	.591	.406	.185	.145	.046	.145	.185	.110	3 BEADS	1/8 TO 5/32
	TE-137-7	T100-10	.660	.460	.200	.112	.048	.120	.156	.100	3 BEADS	1/8 TO 5/32
	TE-137-8	T100-5	.665	.460	.205	.093 SQ.	.048	.120	.156	.100	3 BEADS SQ. END	1/8 TO 5/32
	TE-137-9	T100-6	.605	.460	.145	.093 SQ.	.048	.120	.156	.100	3 BEADS SQ. END	5/64 TO 7/64

REF.-THE BEAD CHAIN MFG. CO. (PG. 7)

REQ.	ITEM	PART NO.	DESCRIPTION	SYMBOL
		//	THE TECHNICAL MATERIEL CORP. MAMARONECK. NEW YORK	
		STOCK SIZE		
		//	TERMINAL	
		MATERIAL	MULTI-SWAGE	
		WEIGHT PER PC.		
		//		
		TYPE & TEMPER	16 9/8/53	
		//		
		HEAT TREAT. SPEC.		
		//		
		FINISH & SPEC. NO.		

ISSUE	ITEM	CHANGED FROM	DATE	CN. NO.	DRAFTS	CHECKER	ENG. APP.
TOLERANCES			SCALE //				
ALL OTHERS	DEC. DIM. ± FRAC. DIM. ± ANGULAR DIM. ±		DRILL, PUNCH, COMMERCIAL STOCK SIZES AND MANUFACTURERS TOLERANCES ARE NOT INCLUDED.				

DRAWN: *[Signature]*  
ELEC. DES. APP.: *[Signature]*  
MECH. DES. APP.: *[Signature]*  
CHECKED: *[Signature]*  
FINAL APPROVAL: *[Signature]*  
TE-137