

IF IT IS FOUND DESIRABLE TO CHANGE ANY TOLERANCE OR OTHER DETAIL SPECIFIED ON THIS DRAWING NOTIFY THE PURCHASER PROMPTLY.

STANDARD DRAWING

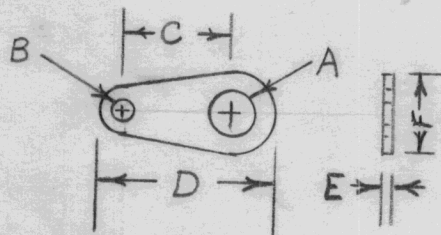
TE-110

A

MAXIMUM ALLOWABLE TOLERANCES HAVE BEEN DETERMINED AND DEVIATIONS WILL BE CAUSE FOR REJECTION. REMOVE ALL BURRS AND SHARP EDGES

USED ON

MODEL	PROJECT NO.	ASS'Y. NO.	DATE
-------	-------------	------------	------



TMC #	BOLT-SIZE	A	B	C	D	E	F	Cat. Number
TE-110-1	3	.109 .102	3/32	3/8	5/8	.018	5/16	2506-03-00
TE-110-2	4	.123 .116	3/32	3/8	5/8	.018	5/16	2506-04-00
TE-110-3	6	.150 .142	3/32	3/8	5/8	.018	5/16	2506-06-00
TE-110-4	8	.176 .168	3/32	3/8	5/8	.018	5/16	2506-08-00
TE-110-5	10	.204 .195	3/32	3/8	5/8	.018	5/16	2506-10-00
TE-110-6	1/4	.250	3/32	15/32	25/32	.018	7/16	

*Dem for Ref Only
Ref. Shakeproof Inc.*

REQ.	ITEM	PART NO.	DESCRIPTION	SYMBOL
			THE TECHNICAL MATERIEL CORP. MAMARONECK, NEW YORK	
		STOCK SIZE		
	BRASS		LUG-SOLDER	
		MATERIAL		
		WEIGHT PER PC.		
		TYPE & TEMPER		
		HEAT TREAT. SPEC.		
		FINISH & SPEC. NO.		
DRAWN			ELEC. DES. APP.	MECH. DES. APP.
CHECKED			FINAL APPROVAL	
			TE-110	A

A	1	TE-110-6 Added	10/23/57	1	16			
ISSUE	ITEM	CHANGED FROM	DATE	CN. NO.	DRAFTS	CHECKER	ENG. APP.	

TOLERANCES		SCALE	DRILL, PUNCH, COMMERCIAL STOCK SIZES AND MANUFACTURERS TOLERANCES ARE NOT INCLUDED.
ALL OTHERS	DEC. DIM. ± FRAC. DIM. ± ANGULAR DIM. ±		