

IF IT IS FOUND DESIRABLE TO CHANGE ANY TOLERANCE OR OTHER DETAIL SPECIFIED ON THIS DRAWING NOTIFY THE PURCHASER PROMPTLY.

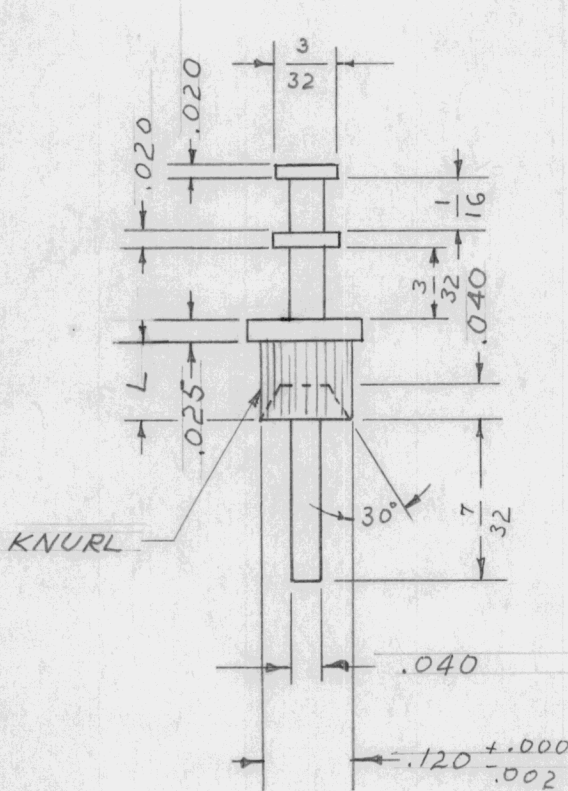
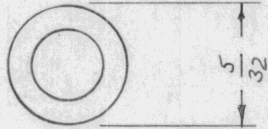
# STANDARD DRAWING

TE-100

MAXIMUM ALLOWABLE TOLERANCES HAVE BEEN DETERMINED AND DEVIATIONS WILL BE CAUSE FOR REJECTION. REMOVE ALL BURRS AND SHARP EDGES

USED ON

MODEL	PROJECT NO.	ASS'Y. NO.	DATE
TMC NO.	PMP NO.	L	T
TE-100-1	1801	3/32	1/16
TE-100-2	1802	1/8	3/32
TE-100-3	1803	5/32	1/8



MATERIAL - BRASS  
 FINISH - SILVER PLATE  
 .0003 TH'K.

L = LENGTH OF SHANK OF LUG.  
 T = THICKNESS OF MOUNTING BOARD USED

REF. PRECISION METAL PRODUCTS CO.

REQ.	ITEM	PART NO.	DESCRIPTION	SYMBOL
		—#—	THE TECHNICAL MATERIEL CORP. MAMARONECK, NEW YORK	
		STOCK SIZE	DOUBLE END TERMINAL	
		MATERIAL	PIN TYPE	
		WEIGHT PER PC.		
		TYPE & TEMPER	P.B. 9-17-54	
		HEAT TREAT. SPEC.		
		FINISH & SPEC. NO.		

NO CHANGE	READRMIN	9-17-54	P.B.	WAS	WOL		
ISSUE	ITEM	CHANGED FROM	DATE	CN. NO.	DRAFTS	CHECKER	ENG. APP.

TOLERANCES			SCALE		
ALL OTHERS	DEC. DIM. ± .005	DRILL, PUNCH, COMMERCIAL STOCK SIZES AND MANUFACTURERS TOLERANCES ARE NOT INCLUDED.			
	FRAC. DIM. ± 1/64				
	ANGULAR DIM. ±				

IF IT IS FOUND DESIRABLE TO CHANGE ANY TOLERANCE OR OTHER DETAIL SPECIFIED ON THIS DRAWING NOTIFY THE PURCHASER PROMPTLY.

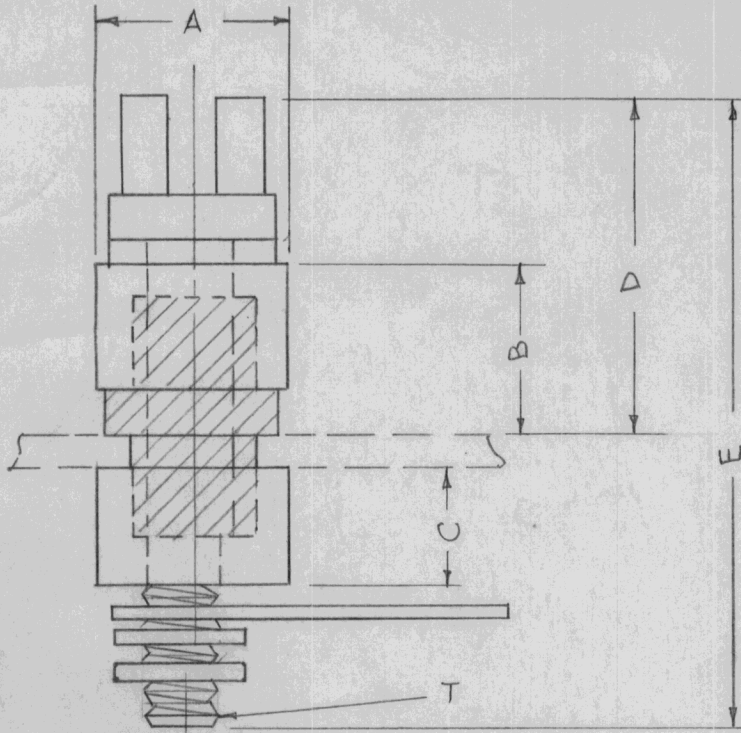
# STANDARD DRAWING

TE-101

MAXIMUM ALLOWABLE TOLERANCES HAVE BEEN DETERMINED AND DEVIATIONS WILL BE CAUSE FOR REJECTION. REMOVE ALL BURRS AND SHARP EDGES

## USED ON

MODEL PROJECT NO. ASS'Y. NO. DATE



TMC NO.	CAT NO.	A	B	C	D	E	T	VOLTS RMS	AMPS	MTG. HOLE DIGM.	PANEL THICKNESS	TIGHT-ENING TORQUE	SPACING CENTER TO CENTER
TE-101-1	250-D	1/4	9/64	7/64	23/64	13/16	4-40	2,000	10	11/64	.037 MAX. .020 MIN.	1" #	.375
TE-101-2	312-A	5/16	7/32	5/32	7/16	29/32	4-40	4,000	10	7/32	.037 MAX. .020 MIN.	1 1/4" #	.500
TE-101-3	375-B	3/8	5/16	1/4	23/32	13/8	6-32	5,000	20	17/64	.048 MAX. .025 MIN.	4" #	.625
TE-101-4	375-A	3/8	7/16	1/4	23/32	13/8	6-32	6,000	20	17/64	.040 MAX. .025 MIN.	4" #	.625
TE-101-5	500-D	1/2	13/16	1/4	17/32	17/8	6-32	7,000	20	17/64	.048 MAX. .025 MIN.	4" #	.750

### BUSHING INSTALLATION PROCEDURE

- 1-BE CERTAIN THAT HOLES ARE FREE FROM BURRS.
- 2-INSERT STUD, WASHER, TOP STEATITE AND GLAND THROUGH TOP OF PANEL.
- 3-ASSEMBLE BOTTOM PARTS, RUNNING THE NUT UP FINGER TIGHT.
- 4-USING A TORQUE WRENCH, SET THE NUT TO THE RECOMENDED TORQUE.
- 5-LET COVER ASSEMBLY BE STOROD FOR 24 hrs. OR LONGER
- 6-RESET THE NUT TO THE RECOMMENDED TORQUE

NOTE: FOR LOCATION OF TERMINALS SEE BX-100

REF. HELDOR BUSHING & TERMINAL CO., INC

### SPECIFICATIONS:

STUD: BRASS, HOT-TINNED.

INSULATOR: STEATITE, GLAZED, L-3 OR BETTER PER SPECIFICATION JAN-I-10,

WASHER & GLAND: NEOPRENE-60°F TO-225°F

LUG, SOLDER: COPPER, TINNED.

SPLIT WASHER: PHOSPHOR. BRONZE.

NUT: HEX, BRASS, TINNED.

REQ.	ITEM	PART NO.	DESCRIPTION	SYMBOL
		11	THE TECHNICAL MATERIEL CORP. MAMARONECK. NEW YORK	
		STOCK SIZE		
		11	SLOTTED HEAD BUSHING	
		MATERIAL		
		WEIGHT PER PC.		
		11	P.B. 9-17-54	
		TYPE & TEMPER		
		11	DRAWN	
			ELEC. DES. APP.	
			MECH. DES. AP	
		HEAT TREAT. SPEC.		
		11	CHECKED	
			FINAL APPROVAL	
		FINISH & SPEC. NO.		
				TE-101

#	1	REDRAWN - NO REVISION	10/25/54	1	J. H. H.	W. E.
ISSUE	ITEM	CHANGED FROM	DATE	CN. NO.	DRAFTS CHECKER	ENG. APP.

TOLERANCES		SCALE
ALL OTHERS	DEC. DIM. ± FRAC. DIM. ± ANGULAR DIM. ±	DRILL, PUNCH, COMMERCIAL STOCK SIZES AND MANUFACTURERS TOLERANCES ARE NOT INCLUDED.

IF IT IS FOUND DESIRABLE TO CHANGE ANY TOLERANCE OR OTHER DETAIL SPECIFIED ON THIS DRAWING NOTIFY THE PURCHASER PROMPTLY.

# STANDARD DRAWING

TE-102 C

MAXIMUM ALLOWABLE TOLERANCES HAVE BEEN DETERMINED AND DEVIATIONS WILL BE CAUSE FOR REJECTION.  
REMOVE ALL BURRS AND SHARP EDGES

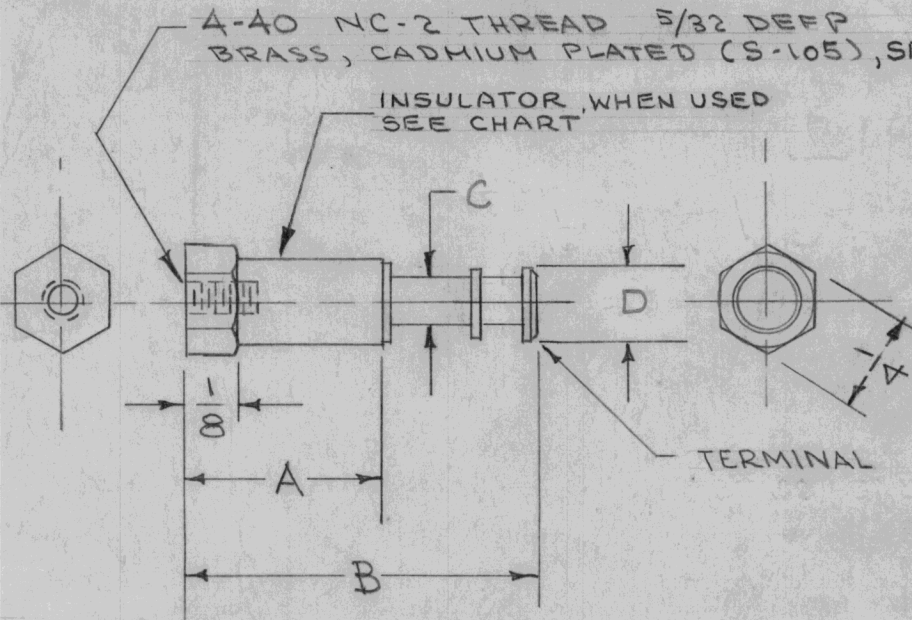
USED ON

MODEL PROJECT NO. ASS'Y. NO. DATE

MFG. CODE	T.M.C. NO.	MFG. NO	A	B	C	D	INSULATING MAT'L	TERM. MATERIAL
A	TE-102-1	3B1-A1	17/32	27/32	3/32	.180	MOLDED MELAMINE MINERAL FILLED	BRASS, HOT SOLDER DIPPED
A	TE-102-2	3A1-A1	3/8	11/16	3/32	.180	MOLDED MELAMINE MINERAL FILLED	BRASS, HOT SOLDER DIPPED
B	TE-102-3	2381-1	3/8	23/32	5/64	.140	NON INSULATED BRASS, HOT TIN DIPPED	BRASS, HOT TIN DIPPED

A-40 NC-2 THREAD 5/32 DEEP  
BRASS, CADMIUM PLATED (S-105), SEE NOTE.

INSULATOR, WHEN USED  
SEE CHART



MATERIAL: SEE CHART

1. INSULATOR TO BE PER MIL-P-14A, TYPE MME, MELMAC #592 OR EQUIV.
2. THREAD MATERIAL AS SHOWN ONLY FOR INSULATED TYPE.
3. FLASH OVER VOLTAGE OF INSULATED TYPE: 17 KV NOMINAL

A S401-309

B S401-167

REQ.	ITEM	PART NO.	DESCRIPTION	SYMBOL
		#	THE TECHNICAL MATERIEL CORP.	
			MAMARONECK, NEW YORK	
		STOCK SIZE		
		#	TERMINAL, TURRET	
		MATERIAL		
		WEIGHT PER PC.		
		TYPE & TEMPER	C.D.D. 6-29-54	G.T.O
			DRAWN	ELEC. DES. APP.
			CHECKED	MECH. DES. APP.
		HEAT TREAT. SPEC.		
		FINISH & SPEC. NO.		
			FINAL APPROVAL	
			TE-102	C

ISSUE	ITEM	CHANGED FROM	DATE	CN. NO.	DRAFTS	CHECKER	ENG. APP.
C		CHART, SPECS & PICT. REVISED	6-7-66	16353	N.C.	Q/B	
B	1	CHART & SPECS REVISED	8-4-64	12021	WB	@	
A	1	REVISED TO MFR SPEC	4-29-63	8877	E	JAY	
#	#	REDRAWN - NO CHANGE			CSD	JAY	

TOLERANCES	SCALE	DRILL, PUNCH, COMMERCIAL STOCK SIZES AND MANUFACTURERS TOLERANCES ARE NOT INCLUDED.
ALL OTHERS DEC. DIM. ± .015 FRAC. DIM. ± 1/64 ANGULAR DIM. ±	#	

THE CONTENTS OF THIS DRAWING ARE THE EXCLUSIVE PROPERTY OF THE TECHNICAL MATERIEL CORP. ITS UNAUTHORIZED USE FOR REPRODUCTION IN WHOLE OR IN PART IS STRICTLY FORBIDDEN.

REQ. PER UNIT

USED ON

MODEL

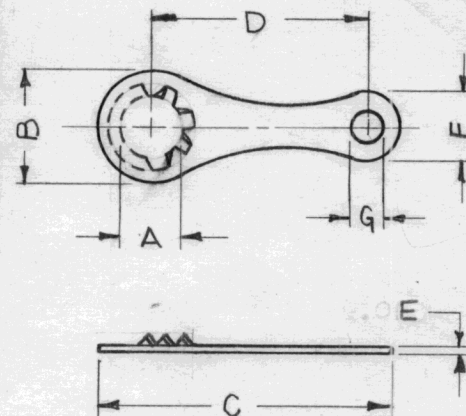
ASS'Y. NO.

DATE

TE-104

C

TMC PART NUMBER	MFRS. PART NUMBER	SCREW SIZE	"A" (DIAMETER)	"B"	"C"	"D"	"E"	"F"	"G" (DIA.)
TE-104-1	2101-04-00	4	.123-.116	5/16	7/8	5/8	.018	11/64	3/32
TE-104-2	2101-06-00	6	.150-.142	5/16	7/8	5/8	.018	11/64	3/32
TE-104-3	2101-08-00	8	.176-.168	5/16	7/8	5/8	.018	11/64	3/32
TE-104-4	2101-10-00	10	.204-.195	11/32	57/64	5/8	.018	11/64	3/32
TE-104-5	2101-14-00	1/4	.267-.256	7/16	13/16	1/2	.018	3/16	3/32
TE-104-6	2168-12-01	12	.223-.216	7/16	21/32	3/8	.018	1/8	1/16



## STANDARD DRAWING

REF: SHAKEPROOF INC.

REQ.	ITEM	PART NO.	DESCRIPTION				SYMBOL
			See "E" Dim.				THE TECHNICAL MATERIEL CORP. MAMARONECK, NEW YORK
			STOCK SIZE				
			PHOSPHOR BRONZE				
			MATERIAL				TERMINAL, LOCKING
C	REDRAWN & REVISED	3-1-63	8351				
SYM	DESCRIPTION	DATE	CH. NO.	DRAFTS	CHECKER	ENG. APP.	
UNLESS OTHERWISE SPECIFIED DIMENSIONS ARE IN INCHES AND INCLUDE CHEMICALLY APPLIED OR PLATED FINISHES		SCALE					
DECIMALS .X ± .05 .XX ± .01 .XXX ± .005	TOLERANCES	FRACTIONS ± 1/64 ANGLES ± 0° 30'	CODE				
TYPE & TEMPER		HEAT TREAT. SPEC.		DRAWN		CHECKED	FINAL APPROVAL
HOT TINNED DIP				G. S. [Signature]		H. D. [Signature]	BP [Signature]
FINISH & SPEC. NO.		ELEC. DES. APP.		MECH. DES. APP.		TE-104	C

IF IT IS FOUND DESIRABLE TO CHANGE ANY TOLERANCE OR OTHER DETAIL SPECIFIED ON THIS DRAWING NOTIFY THE PURCHASER PROMPTLY.

# STANDARD DRAWING

TE-105 C

MAXIMUM ALLOWABLE TOLERANCES HAVE BEEN DETERMINED AND DEVIATIONS WILL BE CAUSE FOR REJECTION. REMOVE ALL BURRS AND SHARP EDGES

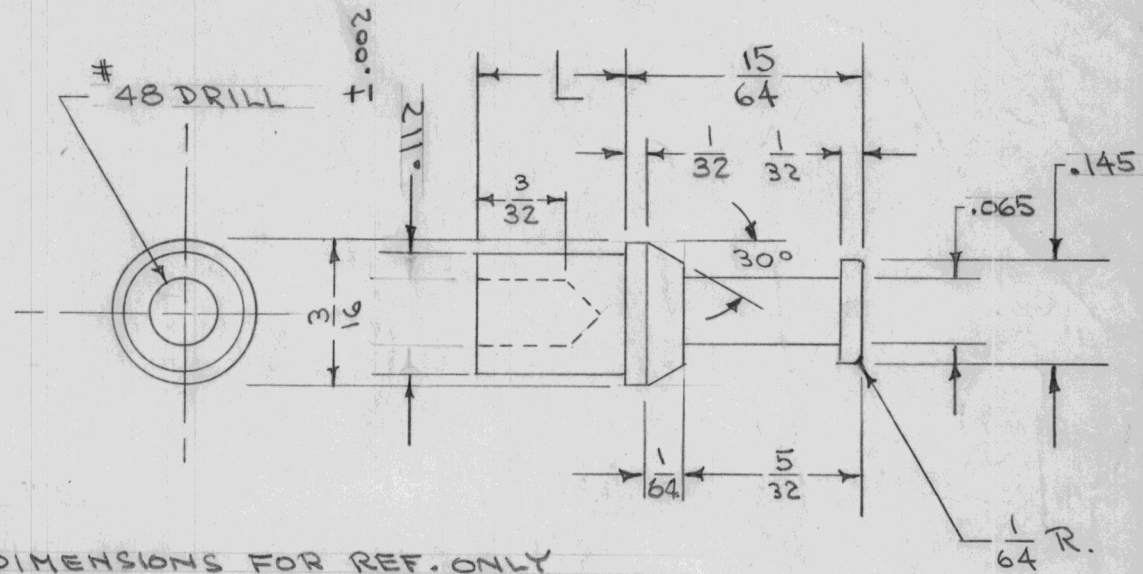
USED ON

MODEL	PROJECT NO.	ASS'Y. NO.	DATE
-------	-------------	------------	------

T.M.C. NO.	CAT. NO.	L	T
TE-105-1	S1245 A	5/64	1/32
-2	B	7/64	1/16
-3	C	9/64	3/32
-4	D	11/64	1/8
-5	E	15/64	3/16
-6	F	19/64	1/4

L-LENGTH OF SHANK OF LUG  
T-THICKNESS OF MTG. BD. USED

NOTE:  
DRILLING PLAN  
NO. 32 (.116) DRILL



REF. CAMBRIDGE THERMIONIC CORP.

REQ.	ITEM	PART NO.	DESCRIPTION	SYMBOL
	#		THE TECHNICAL MATERIEL CORP.	
		STOCK SIZE	MAMARONECK. NEW YORK	
	BRASS	#	TERMINAL LUG,	
	MATERIAL	WEIGHT PER PC.	SHORT TURRET	
			C.D.D. 6-29-54	G.T.O.
		TYPE & TEMPER	DRAWN	ELEC. DES. APP.
			CHECKED	MECH. DES. APP.
		HEAT TREAT. SPEC.	FINAL APPROVAL	
		SILVER PLATE .0003	TE-105 C	
		FINISH & SPEC. NO.		

ISSUE	ITEM	CHANGED FROM	DATE	CN. NO.	DRAFTS	CHECKER	ENG. APP.
C	1	DIMESIONS CLARIFIED	10-23-59	+	DM	J.H.	W.C.
B	1	CH. POS. OF DIM. LINE	3-8-59	2	P.B.	J.H.	W.C.
#	#	REDRAWN-NO CHANGE	9/29/54	+	C.D.D.	J.H.	W.C.

TOLERANCES		SCALE
ALL OTHERS	DEC. DIM. ± FRAC. DIM. ± ANGULAR DIM. ±	DRILL, PUNCH, COMMERCIAL STOCK SIZES AND MANUFACTURERS TOLERANCES ARE NOT INCLUDED.

IF IT IS FOUND DESIRABLE TO CHANGE ANY TOLERANCE OR OTHER DETAIL SPECIFIED ON THIS DRAWING NOTIFY THE PURCHASER PROMPTLY.

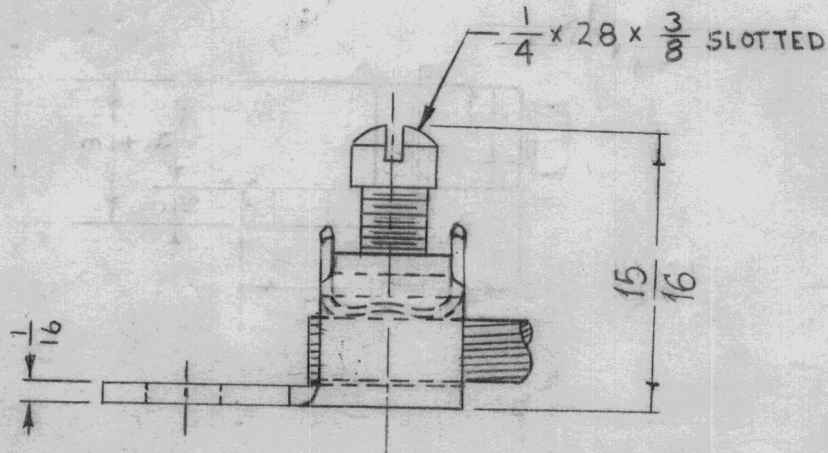
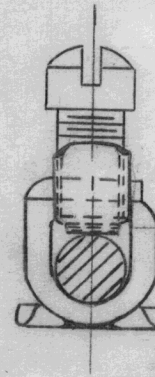
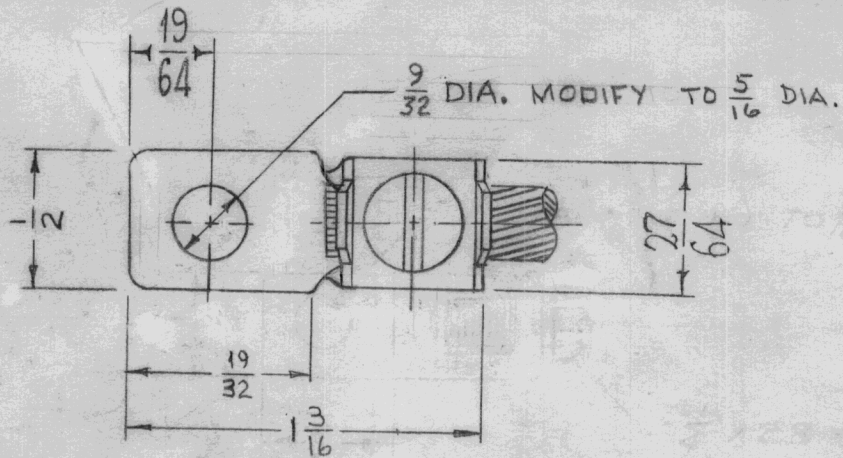
MAXIMUM ALLOWABLE TOLERANCES HAVE BEEN DETERMINED AND DEVIATIONS WILL BE CAUSE FOR REJECTION. REMOVE ALL BURRS AND SHARP EDGES

# STANDARD DRAWING

TE-106 D

USED ON

MODEL	PROJECT NO.	ASS'Y. NO.	DATE
	141	A-130	1-5-52
TER-5000			5-12-57



DIMENSIONS FOR REF ONLY.  
ACCEPTS CABLE SIZE: #4 STR. (.231) TO #14 SOL. (.064)

D	1	PICT. REVISED & REDRAWN.	2-26-65	13558	28.	JCB	
C	1	REF. WAS: DOFFERT MFG. Co. Cat. HL-4-1-50	9557	3	EC.	JCB	
B	1	REDRAWN	1/5/53	2	16	JCB	
ISSUE	ITEM	CHANGED FROM	DATE	CN. NO.	DRAFTS	CHECKER	ENG. APP.

TOLERANCES

SCALE 5401-226 (TYPE KPA 4C)

ALL OTHERS  
DEC. DIM. ±  
FRAC. DIM. ±  
ANGULAR DIM. ±

DRILL, PUNCH, COMMERCIAL STOCK  
SIZES AND MANUFACTURERS  
TOLERANCES ARE NOT INCLUDED.

REQ.	ITEM	PART NO.	DESCRIPTION	SYMBOL
		//	THE TECHNICAL MATERIEL CORP. MAMARONECK, NEW YORK	
		STOCK SIZE		
		COPPER ALLOY	//	SOLDERLESS LUG
		MATERIAL	WEIGHT PER PC.	
		TYPE & TEMPER	16 1-5-53	
		HEAT TREAT. SPEC.	DRAWN	ELEC. DES. APP. MECH. DES. APP.
		FINISH & SPEC. NO.	CHECKED	FINAL APPROVAL

TE 106 D

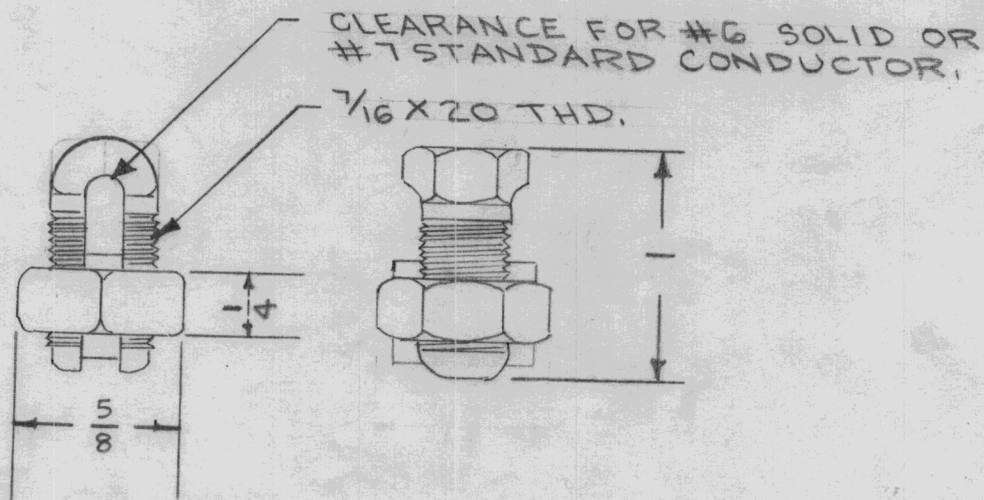
IF IT IS FOUND DESIRABLE TO CHANGE ANY TOLERANCE OR OTHER DETAIL SPECIFIED ON THIS DRAWING NOTIFY THE PURCHASER PROMPTLY.

RELEASED

TE-107 A

MAXIMUM ALLOWABLE TOLERANCES HAVE BEEN DETERMINED AND DEVIATIONS WILL BE CAUSE FOR REJECTION. REMOVE ALL BURRS AND SHARP EDGES

USED ON			
MODEL	PROJECT NO.	ASS'Y. NO.	DATE
	#141	A-126	8-28-52



DIMENSIONS FOR REF. ONLY

REF.: BURNDY CAT. # KS17

REQ.	ITEM	PART NO.	DESCRIPTION	SYMBOL
			THE TECHNICAL MATERIEL CORP. MAMARONECK, NEW YORK	
		STOCK SIZE	SPLIT BOLT	
		COPPER ALLOY	CONNECTOR	
		MATERIAL		
		WEIGHT PER PC.		
		TYPE & TEMPER	DRAWN 8-28-52	
		HEAT TREAT. SPEC.	ELEC. DES. APP.	MECH. DES. APP.
		FINISH & SPEC. NO.	CHECKED	FINAL APPROVAL

ISSUE	ITEM	CHANGED FROM	DATE	CN. NO.	DRAFTS	CHECKER	ENG. APP.
A	1	GENERAL REVISION	1/3/53	1	16	#	#

TOLERANCES

SCALE

DRILL, PUNCH, COMMERCIAL STOCK SIZES AND MANUFACTURERS TOLERANCES ARE NOT INCLUDED.

ALL OTHERS  
DEC. DIM. ±  
FRAC. DIM. ±  
ANGULAR DIM. ±

TE-107 A

IF IT IS FOUND DESIRABLE TO CHANGE ANY TOLERANCE OR OTHER DETAIL SPECIFIED ON THIS DRAWING NOTIFY THE PURCHASER PROMPTLY.

# STANDARD DRAWING

TE-109

MAXIMUM ALLOWABLE TOLERANCES HAVE BEEN DETERMINED AND DEVIATIONS WILL BE CAUSE FOR REJECTION. REMOVE ALL BURRS AND SHARP EDGES

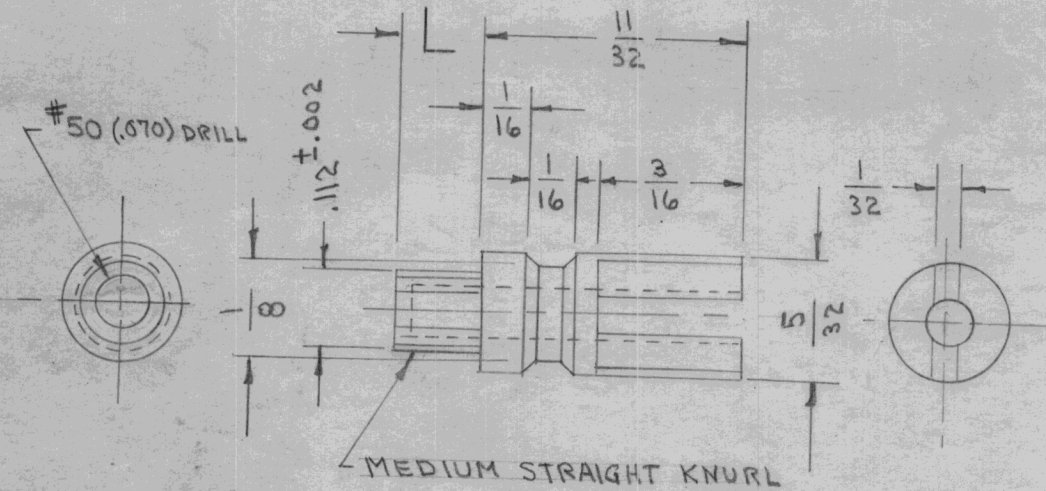
USED ON

MODEL

PROJECT NO.

ASS'Y. NO.

DATE



NOTE:

L - LENGTH OF SHANK OF LUG.  
T - THICKNESS OF MOUNTING BOARD USED.

THE "T" MEASUREMENT DETERMINES PROPER LUG TO BE USED

DIMENSIONS FOR REFERENCE ONLY

TMC NO.	CAT. NO	L	T
TE-109-1	X1784 B	7/64	1/16
TE-109-2	X1784 C	9/64	3/32
TE-109-3	X1784 D	11/64	1/8

REF.: CAMBRIDGE THERMIONIC CORP.

REQ.	ITEM	PART NO.	DESCRIPTION	SYMBOL
			THE TECHNICAL MATERIEL CORP. MAMARONECK, NEW YORK	
		STOCK SIZE		
		BRASS	SPLIT TERMINAL LUG	
		MATERIAL	WEIGHT PER PC.	
		TYPE & TEMPER	C.O.D. 8-29-52	G.T.O. <i>9/15/52</i>
			DRAWN	ELEC. DES. APP. MECH. DES. APP.
			HEAT TREAT. SPEC.	
		SILVER PLATE .0003	FINAL APPROVAL	
		FINISH & SPEC. NO.		

ISSUE	ITEM	CHANGED FROM	DATE	CN. NO.	DRAFTS	CHECKER	ENG. APP.

TOLERANCES

SCALE 4 X SIZE

ALL OTHERS  
DEC. DIM. ±  
FRAC. DIM. ±  
ANGULAR DIM. ±

DRILL, PUNCH, COMMERCIAL STOCK SIZES AND MANUFACTURERS TOLERANCES ARE NOT INCLUDED.

TE-109



IF IT IS FOUND DESIRABLE TO CHANGE ANY TOLERANCE OR OTHER DETAIL SPECIFIED ON THIS DRAWING NOTIFY THE PURCHASER PROMPTLY.

# STANDARD DRAWING

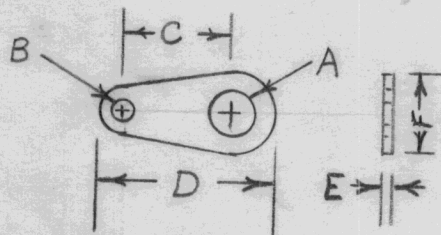
TE-110

A

MAXIMUM ALLOWABLE TOLERANCES HAVE BEEN DETERMINED AND DEVIATIONS WILL BE CAUSE FOR REJECTION. REMOVE ALL BURRS AND SHARP EDGES

USED ON

MODEL	PROJECT NO.	ASS'Y. NO.	DATE
-------	-------------	------------	------



TMC #	BOLT-SIZE	A	B	C	D	E	F	Cat. Number
TE-110-1	3	.109 .102	3/32	3/8	5/8	.018	5/16	2506-03-00
TE-110-2	4	.123 .116	3/32	3/8	5/8	.018	5/16	2506-04-00
TE-110-3	6	.150 .142	3/32	3/8	5/8	.018	5/16	2506-06-00
TE-110-4	8	.176 .168	3/32	3/8	5/8	.018	5/16	2506-08-00
TE-110-5	10	.204 .195	3/32	3/8	5/8	.018	5/16	2506-10-00
TE-110-6	1/4	.250	3/32	15/32	25/32	.018	7/16	

*Dem for Ref Only  
Ref. Shakeproof. Inc.*

REQ.	ITEM	PART NO.	DESCRIPTION	SYMBOL
			THE TECHNICAL MATERIEL CORP. MAMARONECK, NEW YORK	
		STOCK SIZE		
	BRASS		LUG-SOLDER	
		MATERIAL	WEIGHT PER PC.	
		TYPE & TEMPER		
		HEAT TREAT. SPEC.		
		Hot Solder Dip		
		FINISH & SPEC. NO.		
DRAWN			ELEC. DES. APP.	MECH. DES. APP.
CHECKED			FINAL APPROVAL	
			TE-110 A	

A	1	TE-110-6 Added	10/23/57	1	16			
ISSUE	ITEM	CHANGED FROM	DATE	CN. NO.	DRAFTS	CHECKER	ENG. APP.	

TOLERANCES		SCALE	DRILL, PUNCH, COMMERCIAL STOCK SIZES AND MANUFACTURERS TOLERANCES ARE NOT INCLUDED.
ALL OTHERS	DEC. DIM. ± FRAC. DIM. ± ANGULAR DIM. ±		

IF IT IS FOUND DESIRABLE TO CHANGE ANY TOLERANCE OR OTHER DETAIL SPECIFIED ON THIS DRAWING NOTIFY THE PURCHASER PROMPTLY.

# STANDARD DRAWING

TE-III

A

MAXIMUM ALLOWABLE TOLERANCES HAVE BEEN DETERMINED AND DEVIATIONS WILL BE CAUSE FOR REJECTION. REMOVE ALL BURRS AND SHARP EDGES

RELEASED

USED ON

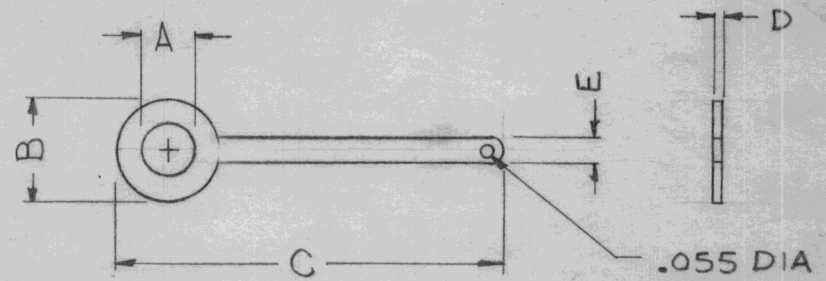
MODEL

PROJECT NO.

ASS'Y. NO.

DATE

TMC PART NO.	CATALOG NO	A	B	C	D	E
TE-III-1	334	1/4	1/2	2	.020	1/8
TE-III-2	334	3/8	1/2	2	.020	1/8
TE-III-3		.628 $\begin{smallmatrix} +.000 \\ -.003 \end{smallmatrix}$	7/8	2	.020	1/8



### NOTICE TO PERSONS RECEIVING THIS DRAWING

THE TECHNICAL MATERIEL CORPORATION claims proprietary right in the material disclosed hereon. This drawing is issued in confidence for engineering information only and may not be reproduced or used to manufacture anything shown hereon without permission from THE TECHNICAL MATERIEL CORPORATION to the user. This drawing is loaned for mutual assistance and is subject to recall at any time.

DIMENSIONS FOR REF. ONLY

REF.: ZIERICK MFG. CO.

Property of:

THE TECHNICAL MATERIEL CORPORATION  
MAMARONECK, NEW YORK

REQ.	ITEM	PART NO.	DESCRIPTION	SYMBOL
		#	THE TECHNICAL MATERIEL CORP. MAMARONECK, NEW YORK	
		STOCK SIZE		
		COPPER	#	LUG, SOLDER.
		MATERIAL	WEIGHT PER PC.	
		#		
		TYPE & TEMPER	C.P.D. 9-21-52	G.T.O. PMS
		#	DRAWN	ELEC. DES. APP. MECH. DES. APP.
		HEAT TREAT. SPEC.	PMS	
		FINISH & SPEC. NO.	CHECKED	FINAL APPROVAL
		HOT TIN DIP		TE-III
				A

A	3	DIMS "B" TO "E" ADDED TO CHART	1-29-63	8144				
	2	PICTORIAL CLARIFIED						
	1	TE-III-3 ADDED						

ISSUE	ITEM	CHANGED FROM	DATE	CN. NO.	DRAFTS	CHECKER	ENG. APP.

TOLERANCES		SCALE
ALL OTHERS	DEC. DIM. $\pm$ FRAC. DIM. $\pm$ ANGULAR DIM. $\pm$	FULL
		DRILL, PUNCH, COMMERCIAL STOCK SIZES AND MANUFACTURERS TOLERANCES ARE NOT INCLUDED.

IF IT IS FOUND DESIRABLE TO CHANGE ANY TOLERANCE OR OTHER DETAIL SPECIFIED ON THIS DRAWING NOTIFY THE PURCHASER PROMPTLY.

# STANDARD DRAWING

TE-112

MAXIMUM ALLOWABLE TOLERANCES HAVE BEEN DETERMINED AND DEVIATIONS WILL BE CAUSE FOR REJECTION. REMOVE ALL BURRS AND SHARP EDGES

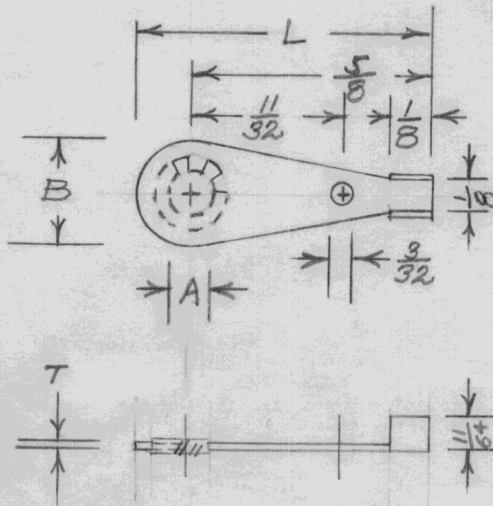
USED ON

MODEL

PROJECT NO.

ASS'Y. NO.

DATE



TMC No.	Cat. No.	Screw Size	A	B	L	T
TE-112-1	2108-04-00	4	.123-.116	5/16	25/32	.018
TE-112-2	2108-06-00	6	.150-.142	5/16	25/32	.018
TE-112-3	2108-08-00	8	.176-.168	5/16	25/32	.018
TE-112-4	2108-10-00	10	.204-.195	11/32	51/64	.018

Ref. Shakerproof Inc.

REQ.	ITEM	PART NO.	DESCRIPTION	SYMBOL
		— H —	THE TECHNICAL MATERIEL CORP. MAMARONECK, NEW YORK	
		STOCK SIZE		
		Phos. Bronze	TERMINAL-LOCKING CRIMP TYPE	
		— H —		
		MATERIAL	WEIGHT PER PC.	
		— H —		
		TYPE & TEMPER		
		— H —		
		HEAT TREAT. SPEC.		
		Hot Solder Dip		
		FINISH & SPEC. NO.		

ISSUE	ITEM	CHANGED FROM	DATE	CN. NO.	DRAFTS	CHECKER	ENG. APP.
-------	------	--------------	------	---------	--------	---------	-----------

TOLERANCES

SCALE

ALL OTHERS

DEC. DIM. ±  
FRAC. DIM. ±  
ANGULAR DIM. ±

DRILL, PUNCH, COMMERCIAL STOCK SIZES AND MANUFACTURERS TOLERANCES ARE NOT INCLUDED.

DRAWN

ELEC. DES. APP.

MECH. DES. APP.

CHECKED

FINAL APPROVAL

TE-112

IF IT IS FOUND DESIRABLE TO CHANGE ANY TOLERANCE OR OTHER DETAIL SPECIFIED ON THIS DRAWING NOTIFY THE PURCHASER PROMPTLY.

RELEASED

STANDARD DRAWING

TE-113

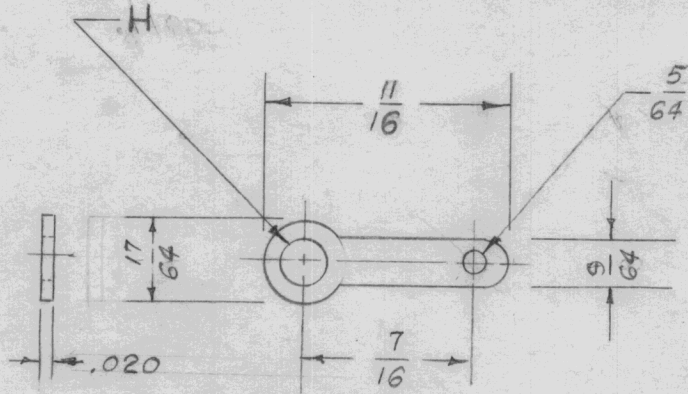
A

MAXIMUM ALLOWABLE TOLERANCES HAVE BEEN DETERMINED AND DEVIATIONS WILL BE CAUSE FOR REJECTION. REMOVE ALL BURRS AND SHARP EDGES

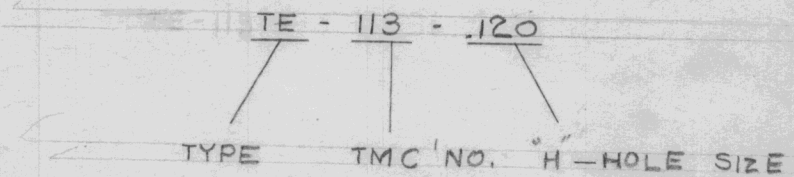
USED ON

MODEL	PROJECT NO.	ASS'Y. NO.	DATE
FFR	104	A-278	12-4-57

"H" HOLE SIZES .120 .149 .169 .180



TYPE DESIGNATION TO BE IN FOLLOWING FORM



DIMENSIONS FOR REF. ONLY.

REF. ZIERICK MFG. CO. NO. 9

REQ.	ITEM	PART NO.	DESCRIPTION	SYMBOL
		.020 THK.	THE TECHNICAL MATERIEL CORP. MAMARONECK. NEW YORK	
		STOCK SIZE		
		BRASS	LUG, TERMINAL	
		MATERIAL		
		WEIGHT PER PC.		
		TYPE & TEMPER	C.D.D 12-4-57	
			G.T.O	
		HEAT TREAT. SPEC.	DRAWN	
			ELEC. DES. APP.	
			MECH. DES. APP.	
			CHECKED	
			FINAL APPROVAL	
		HOT TINNED		
		FINISH & SPEC. NO.		
			TE-113	
				A

ISSUE	ITEM	CHANGED FROM	DATE	CN. NO.	DRAFTS	CHECKER	ENG. APP.
A	1	REDRAWN	2/23/58	1	13	JAW	

TOLERANCES

SCALE TWICE SIZE.

ALL OTHERS

DEC. DIM.  $\pm .005$   
FRAC. DIM.  $\pm \frac{1}{64}$   
ANGULAR DIM.  $\pm$

DRILL, PUNCH, COMMERCIAL STOCK SIZES AND MANUFACTURERS TOLERANCES ARE NOT INCLUDED.

IF IT IS FOUND DESIRABLE TO CHANGE ANY TOLERANCE OR OTHER DETAIL SPECIFIED ON THIS DRAWING NOTIFY THE PURCHASER PROMPTLY.

# STANDARD DRAWING

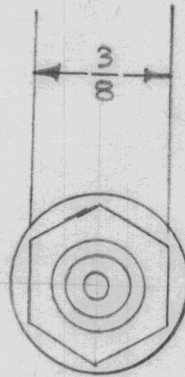
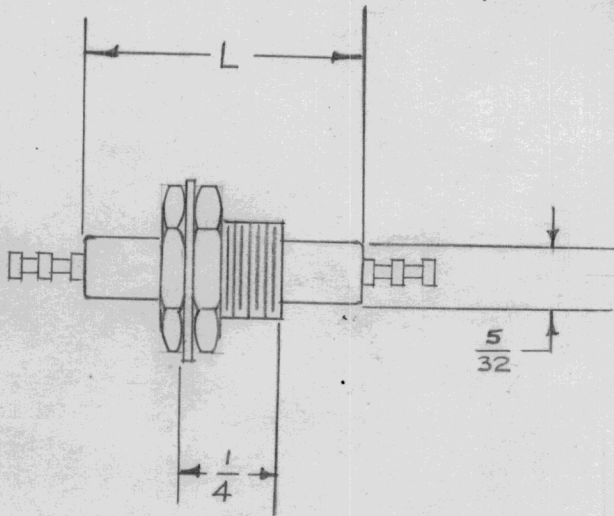
TE-114

A

MAXIMUM ALLOWABLE TOLERANCES HAVE BEEN DETERMINED AND DEVIATIONS WILL BE CAUSE FOR REJECTION. REMOVE ALL BURRS AND SHARP EDGES

USED ON

MODEL	PROJECT NO.	ASS'Y. NO.	DATE
-------	-------------	------------	------



TMC NO.	MFG. NO.	"L"
TE-114-1	X1795A	5/8
* TE-114-2	X1795B	1/2

\* Preferred type, use other versions only when absolutely necessary.

Insulator is Phenolic.  
Solder Terminal is brass, silver plated.  
Bushing is brass, nickel plated.  
Type X1795 terminals mount in 1/4" dia.  
Holes in panel thickness up to 3/16".  
Each unit is supplied with the necessary mounting hardware.

Breakdown voltages at 60 R.M.S. :-

X1795A - 3800

X1795B - 3200

REF.: CAMBRIDGE THERMIONIC CORP.

REQ.	ITEM	PART NO.	DESCRIPTION	SYMBOL
		//	THE TECHNICAL MATERIEL CORP.	
		STOCK SIZE	MAMARONECK, NEW YORK	
		//	TERMINAL,	
		MATERIAL	FEED-THRU	
		WEIGHT PER PC.		
		//	16 12-31-52	
		TYPE & TEMPER	G.T.O	
		//	DRAWN	
		HEAT TREAT. SPEC.	ELEC. DES. APP.	
		//	CHECKED	
		FINISH & SPEC. NO.	FINAL APPROVAL	

A	1	Note Added	1/31/57	1				
ISSUE	ITEM	CHANGED FROM	DATE	CN. NO.	DRAFTS	CHECKER	ENG. APP.	

TOLERANCES		SCALE	//
ALL OTHERS	DEC. DIM. ± FRAC. DIM. ± ANGULAR DIM. ±	DRILL, PUNCH, COMMERCIAL STOCK SIZES AND MANUFACTURERS TOLERANCES ARE NOT INCLUDED.	

TE-114

A

IF IT IS FOUND DESIRABLE TO CHANGE ANY TOLERANCE OR OTHER DETAIL SPECIFIED ON THIS DRAWING NOTIFY THE PURCHASER PROMPTLY.

RELEASED

STANDARD DRAWING

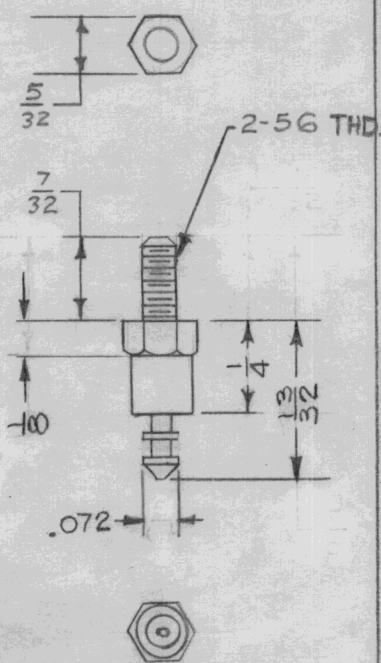
TE-115-

B

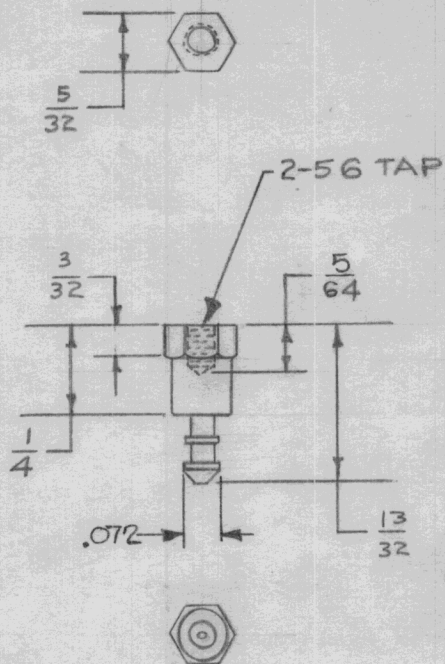
MAXIMUM ALLOWABLE TOLERANCES HAVE BEEN DETERMINED AND DEVIATIONS WILL BE CAUSE FOR REJECTION. REMOVE ALL BURRS AND SHARP EDGES

USED ON

MODEL	PROJECT NO.	ASS'Y. NO.	DATE
FFRD-5	104	A-229	12-31-52
FFRD-6	104	A-229	12-31-52
FFRD-7	104	A-229	12-31-52
FFRD-8	104	A-229	12-31-52



TE-115-1



TE-115-2

TMC NO.	MFG. NO.
TE-115-1	4D5-A1
TE-115-2	4D4-A1

MATERIAL

BODY: MOLDED MELAMINE, MINERAL FILLED PER MIL P-14A TYPE MME, MELMAC #592 OR EQUIV.  
 TERMINAL: BRASS, HOT SOLDER DIP  
 MOUNTING: BRASS, CAD PLATED

DIM. FOR REF. ONLY

REF: WHITSO CO.

REQ.	ITEM	PART NO.	DESCRIPTION	SYMBOL
			THE TECHNICAL MATERIEL CORP.	
			MAMARONECK, NEW YORK	
			TERMINAL TURRET	
			MIDGET TYPE	
			15 12-30-52	
			DRAWN	
			ELEC. DES. APP.	
			MECH. DES. APP.	
			CHECKED	
			FINAL APPROVAL	
			TE-115-	B

B	1	REVISED TO MFR. SPECS	4.29.50	8877				
A	1	MST-103-A-1 WAS MS-103-A-1	1-12-55	1				

TOLERANCES		SCALE	DRILL, PUNCH, COMMERCIAL STOCK SIZES AND MANUFACTURERS TOLERANCES ARE NOT INCLUDED.	
ALL OTHERS	DEC. DIM. ± FRAC. DIM. ± ANGULAR DIM. ±			

IF IT IS FOUND DESIRABLE TO CHANGE ANY TOLERANCE OR OTHER DETAIL SPECIFIED ON THIS DRAWING NOTIFY THE PURCHASER PROMPTLY.

MAXIMUM ALLOWABLE TOLERANCES HAVE BEEN DETERMINED AND DEVIATIONS WILL BE CAUSE FOR REJECTION. REMOVE ALL BURRS AND SHARP EDGES

STANDARD DRAWING STANDARD DRAWING

TE-116 -

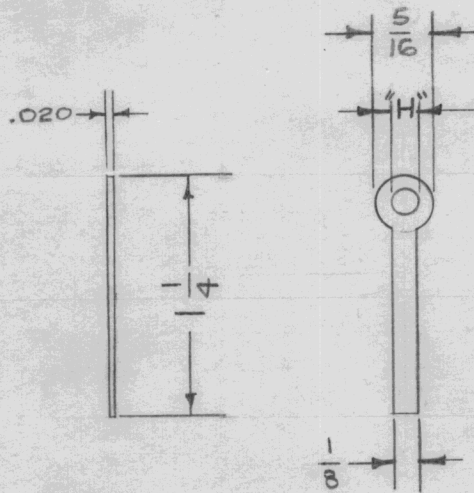
USED ON

MODEL

PROJECT NO.

ASS'Y. NO.

DATE



TMC NO.	MFG. NO.	"I" HOLE
TE-116-1	20	.120
TE-116-2	20	.144
TE-116-3	20	.196
TE-116-4	20	.169

NOTICE TO PERSONS RECEIVING THIS DRAWING

THE TECHNICAL MATERIEL CORPORATION claims proprietary right in the material disclosed hereon. This drawing is issued in confidence for engineering information only and may not be reproduced or used to manufacture anything shown hereon without permission from THE TECHNICAL MATERIEL CORPORATION to the user. This drawing is loaned for mutual assistance and is subject to recall at any time.

Property of:

THE TECHNICAL MATERIEL CORPORATION  
MAMARONECK, NEW YORK

DIM. FOR REF. ONLY

REF: ZIERICK MFG. CORP.

REQ.	ITEM	PART NO.	DESCRIPTION	SYMBOL
		.020 THK.	THE TECHNICAL MATERIEL CORP.	
		STOCK SIZE	MAMARONECK, NEW YORK	
		BRASS	SOLDER LUG	
		MATERIAL		
		WEIGHT PER PC.		
		TYPE & TEMPER	16 12-31-52	
			DRAWN	ELEC. DES. APP. MECH. DES. APP.
			AM 12/31/52	BP
		HEAT TREAT. SPEC.	CHECKED	FINAL APPROVAL
		HOT TINNED		TE-116 -
		FINISH & SPEC. NO.		

ISSUE	ITEM	CHANGED FROM	DATE	CN. NO.	DRAFTS	CHECKER	ENG. APP.

TOLERANCES

SCALE

ALL OTHERS  
DEC. DIM. ±  
FRAC. DIM. ±  
ANGULAR DIM. ±

DRILL, PUNCH, COMMERCIAL STOCK SIZES AND MANUFACTURERS TOLERANCES ARE NOT INCLUDED.

IF IT IS FOUND DESIRABLE TO CHANGE ANY TOLERANCE OR OTHER DETAIL SPECIFIED ON THIS DRAWING NOTIFY THE PURCHASER PROMPTLY.

# STANDARD DRAWING

TE-118

MAXIMUM ALLOWABLE TOLERANCES HAVE BEEN DETERMINED AND DEVIATIONS WILL BE CAUSE FOR REJECTION. REMOVE ALL BURRS AND SHARP EDGES

USED ON

MODEL

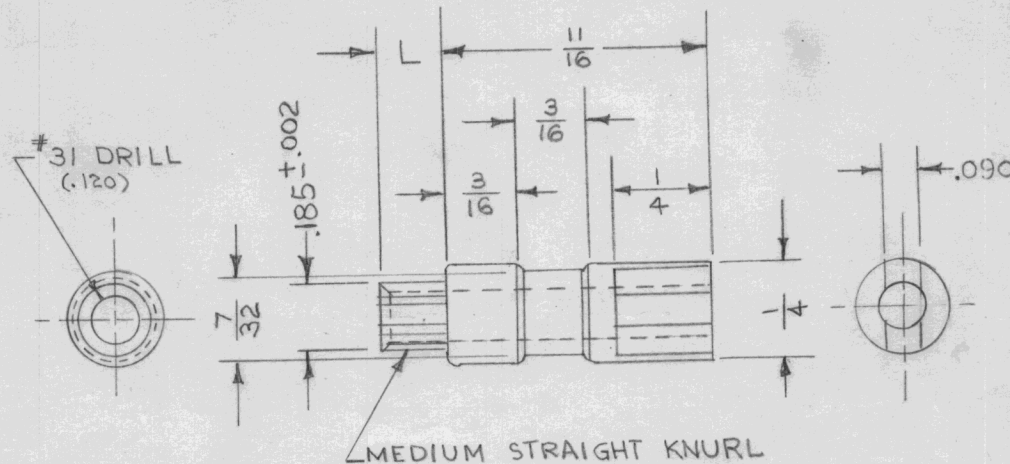
PROJECT NO.

ASS'Y. NO.

DATE

TMC NO.	CAT. NO.	L	T
TE-118-1	X1782 C	9/64	3/32
TE-118-2	X1782 D	1/64	1/8
TE-118-3	X1782 E	15/64	3/16
TE-118-4	X1782 F	19/64	1/4

T IS MTG. BOARD THICKNESS



DIMENSIONS FOR REFERENCE ONLY

REF. CAMBRIDGE THERMIONICS CORP.

REQ.	ITEM	PART NO.	DESCRIPTION	SYMBOL
			<b>THE TECHNICAL MATERIEL CORP.</b>	
			<b>MAMARONECK, NEW YORK</b>	
		STOCK SIZE		
		BRASS	TERMINAL LUG	
		MATERIAL	SPLIT	
		WEIGHT PER PC.		
		TYPE & TEMPER	CDD-1/14/53	G.T.O
			DRAWN	ELEC. DES. APP. MECH. DES. APP.
			1/15/53	G.T.O
		HEAT TREAT. SPEC.	CHECKED	FINAL APPROVAL
		SILVER PLATE .0003		TE-118
		FINISH & SPEC. NO.		

ISSUE	ITEM	CHANGED FROM	DATE	CN. NO.	DRAFTS	CHECKER	ENG. APP.

TOLERANCES

SCALE

ALL OTHERS

DEC. DIM. ±  
FRAC. DIM. ±  
ANGULAR DIM. ±

DRILL, PUNCH, COMMERCIAL STOCK SIZES AND MANUFACTURERS TOLERANCES ARE NOT INCLUDED.



IF IT IS FOUND DESIRABLE TO CHANGE ANY TOLERANCE OR OTHER DETAIL SPECIFIED ON THIS DRAWING NOTIFY THE PURCHASER PROMPTLY.

# STANDARD DRAWING

TE-120

F

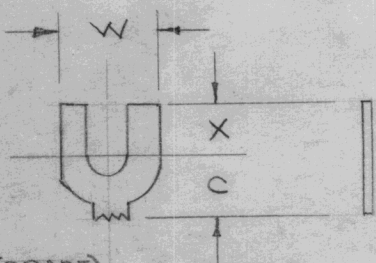
MAXIMUM ALLOWABLE TOLERANCES HAVE BEEN DETERMINED AND DEVIATIONS WILL BE CAUSE FOR REJECTION. REMOVE ALL BURRS AND SHARP EDGES

USED ON

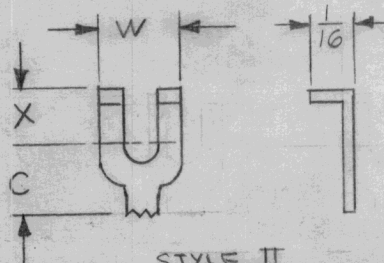
MODEL PROJECT NO. ASS'Y. NO. DATE

TMC P/N	MFG. P/N(1)	MFG. P/N (2)	STYLE	COLOR	C	X	W	E	L	WIRE RANGE	FITS SCREW
TE120-1	34080		I	RED	13/64	9/64	19/64	19/32	47/64	22 TO 16	5 OR 6
TE120-2	32561	SE 18-Z2	II	RED	13/64	9/64	19/64	19/32	23/32	22 TO 16	5 OR 6
TE120-3	32054		I	RED	19/64	3/16	3/8	45/64	57/64	22 TO 16	10
TE120-4	320861	YAE 14-Z2	II	BLUE	13/64	1/8	19/64	19/32	23/32	16 TO 14	5 OR 6
TE120-5	323011		III	YEL	9/32	1/8	1/4	19/32	45/64	26 TO 22	5 OR 6
TE120-6		YAE 18-Z1	II	RED	15/64	1/8	3/16	21/32	25/32	22 TO 16	2

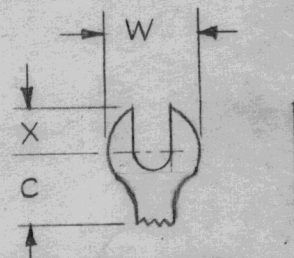
DIMENSIONS FOR REF. ONLY.



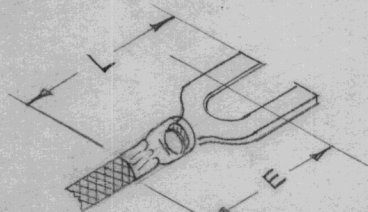
STYLE I (SPADE)



STYLE II (FLANGED SPADE)



STYLE III (SLOTTED RING TONGUE)



PRE-INSULATED DIAMOND GRIP

CRIMPING TOOL NO. 49092 OR 49556

REF: (1) S401-279  
(2) S401-226

REQ.	ITEM	PART NO.	DESCRIPTION	SYMBOL
		.030	THE TECHNICAL MATERIEL CORP. MAMARONECK, NEW YORK	
		STOCK SIZE		
		COPPER	SPADE LUG	
		MATERIAL	WEIGHT PER PC.	
		TYPE & TEMPER	CDD 1-27-53	G.T.O.
			DRAWN	ELEC. DES. APP. MECH. DES. APP.
			CHECKED	FINAL APPROVAL
		HEAT TREAT. SPEC.		
		TINNED		
		FINISH & SPEC. NO.		

ISSUE	ITEM	CHANGED FROM	DATE	CN. NO.	DRAFTS	CHECKER	ENG. APP.
F		-2 P/N WAS YAE-18-Z2	4.28.72	20648	GE	EG	EG
E		COMPLETELY REV. CHART. REF. WAS "AIRCRAFT MARINE"	11.15.66	17265	RME	Q/S	R

TOLERANCES		SCALE
ALL OTHERS	DEC. DIM. ± FRAC. DIM. ± ANGULAR DIM. ±	DRILL, PUNCH, COMMERCIAL STOCK SIZES AND MANUFACTURERS TOLERANCES ARE NOT INCLUDED.

TE-120 F

IF IT IS FOUND DESIRABLE TO CHANGE ANY TOLERANCE OR OTHER DETAIL SPECIFIED ON THIS DRAWING NOTIFY THE PURCHASER PROMPTLY.

# STANDARD DRAWING

TE-122



MAXIMUM ALLOWABLE TOLERANCES HAVE BEEN DETERMINED AND DEVIATIONS WILL BE CAUSE FOR REJECTION. REMOVE ALL BURRS AND SHARP EDGES

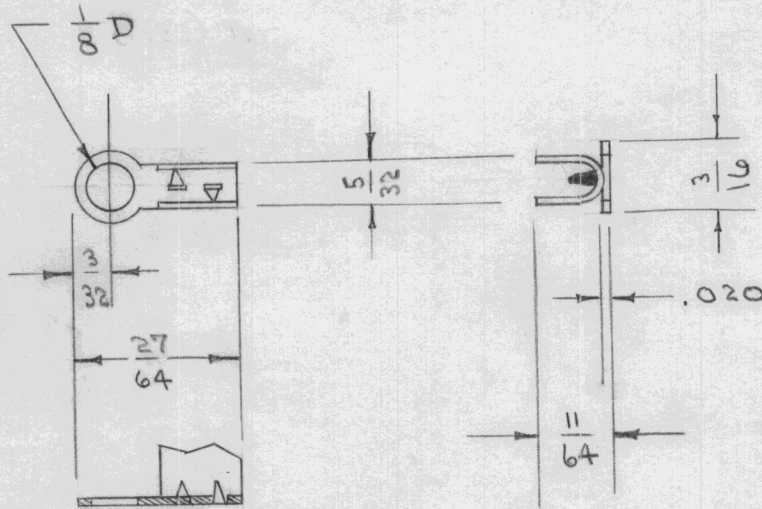
USED ON

MODEL

PROJECT NO.

ASS'Y. NO.

DATE



DIMENSIONS FOR REF. ONLY.

REF.: WESTERN ELECTRIC CAT. NO. 122  
BUY FROM - GRAYBAR ELECTRIC

REQ.	ITEM	PART NO.	DESCRIPTION	SYMBOL
			THE TECHNICAL MATERIEL CORP. MAMARONECK. NEW YORK	
		.020 THK.		
		STOCK SIZE		
		BRASS	CORD TIP	
		MATERIAL		
		WEIGHT PER PC.		
		TYPE & TEMPER	C.D.D. 2-10-53	
			DRAWN	ELEC. DES. APP. MECH. DES. APP.
			CHECKED	FINAL APPROVAL
		HEAT TREAT. SPEC.		
		NICKEL		
		FINISH & SPEC. NO.		

Ø	Ø	ORIGINAL RELEASE	3/24/69		CW			
ISSUE	ITEM	CHANGED FROM	DATE	CN. NO.	DRAFTS	CHECKER	ENG. APP.	
		TOLERANCES	SCALE					
ALL OTHERS		DEC. DIM. ± FRAC. DIM. ± ANGULAR DIM. ±	DRILL, PUNCH, COMMERCIAL STOCK SIZES AND MANUFACTURERS TOLERANCES ARE NOT INCLUDED.					

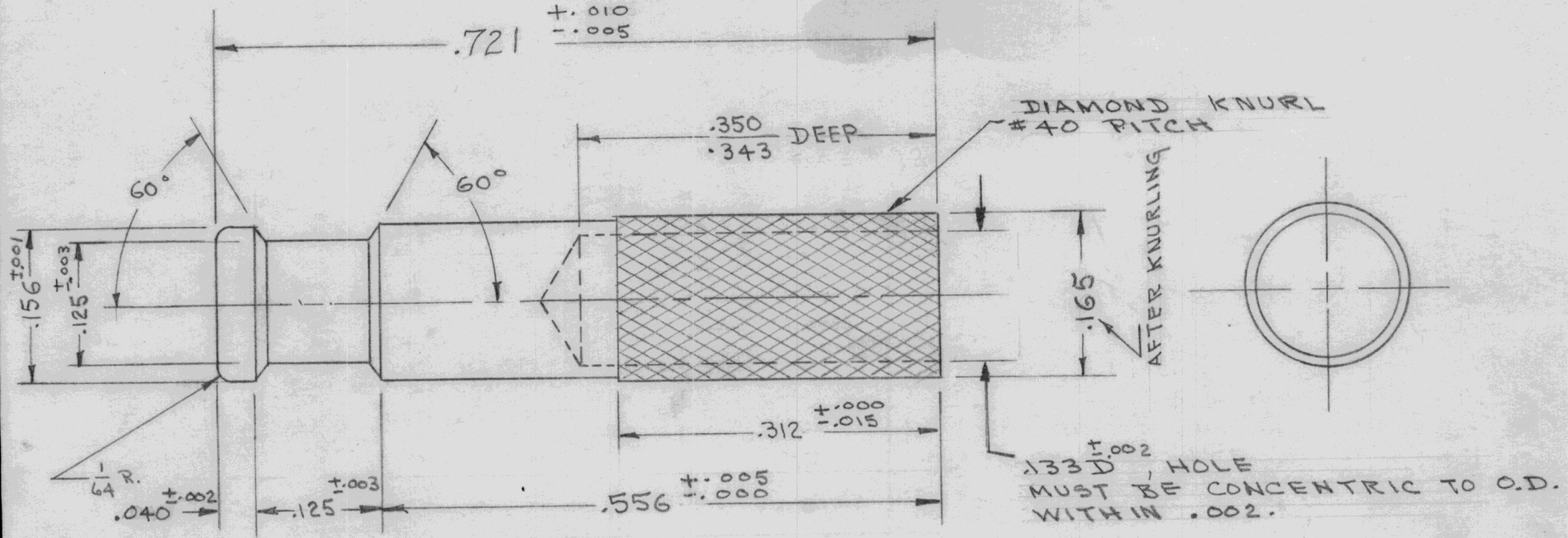
IF IT IS FOUND DESIRABLE TO CHANGE ANY TOLERANCE OR OTHER DETAIL SPECIFIED ON THIS DRAWING NOTIFY THE PURCHASER PROMPTLY.

MAXIMUM ALLOWABLE TOLERANCES HAVE BEEN DETERMINED AND DEVIATIONS WILL BE CAUSE FOR REJECTION. REMOVE ALL BURRS AND SHARP EDGES

TE-123  $\emptyset$

USED ON

MODEL	PROJECT NO.	ASS'Y. NO.	DATE
	178	CA-152	2-16-53
	178	CA-153	2-16-53



REQ.	ITEM	PART NO.	DESCRIPTION	SYMBOL
		5/32 D	THE TECHNICAL MATERIEL CORP. MAMARONECK. NEW YORK	
		STOCK SIZE		
		BRASS ROD	TERMINAL, SOLDER	
		MATERIAL		
		WEIGHT PER PC.		
		SCREW STOCK SAE #72		
		TYPE & TEMPER		
			WDA 2-16-53	
			DRAWN	ELEC. DES. APP. MECH. DES. APP.
			C.D.D. 2-16-52	
			CHECKED	FINAL APPROVAL
		HEAT TREAT. SPEC.		
		BRIGHT NICKEL-5-135		
		FINISH & SPEC. NO.		

$\emptyset$		ORIGINAL RELEASE	9/26/69				
ISSUE	ITEM	CHANGED FROM	DATE	CN. NO.	DRAFTS	CHECKER	ENG. APP.
TOLERANCES			SCALE				
ALL OTHERS	DEC. DIM. $\pm$ FRAC. DIM. $\pm$ ANGULAR DIM. $\pm$		DRILL, PUNCH, COMMERCIAL STOCK SIZES AND MANUFACTURERS TOLERANCES ARE NOT INCLUDED.				

TE-123  $\emptyset$

IF IT IS FOUND DESIRABLE TO CHANGE ANY TOLERANCE OR OTHER DETAIL SPECIFIED ON THIS DRAWING NOTIFY THE PURCHASER PROMPTLY.

TE - 123

MAXIMUM ALLOWABLE TOLERANCES HAVE BEEN DETERMINED AND DEVIATIONS WILL BE CAUSE FOR REJECTION. REMOVE ALL BURRS AND SHARP EDGES

USED ON

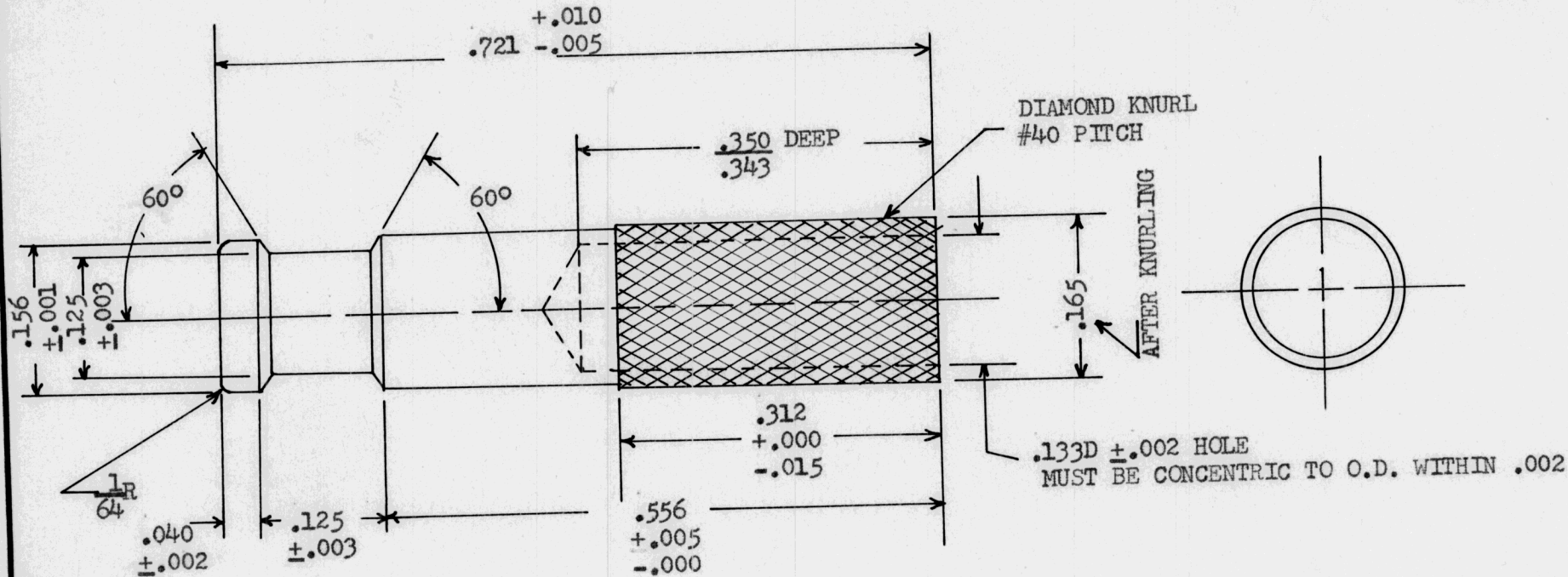
MODEL

PROJECT NO.

ASS'Y. NO.

DATE

CA-152  
CA-153  
CA-162



REQ.	ITEM	PART NO.	DESCRIPTION	SYMBOL
		5/32 D	TMC (Canada) LIMITED OTTAWA ONTARIO	
		STOCK SIZE		
		BRASS ROD	TERMINAL, SOLDER	
		MATERIAL	WEIGHT PER PC.	
		SCREW STOCK SAE #72		
		TYPE & TEMPER	DF 20/6/58	
			DRAWN	ELEC. DES. APP. MECH. DES. APP.
			CHECKED	FINAL APPROVAL
		HEAT TREAT. SPEC.		
		BRIGHT NICKEL		TE - 123
		FINISH & SPEC. NO.		

ISSUE	ITEM	CHANGED FROM	DATE	CN. NO.	DRAFTS	CHECKER	ENG. APP.

TOLERANCES

SCALE

ALL OTHERS

DEC. DIM.  $\pm$   
FRAC. DIM.  $\pm$   
ANGULAR DIM.  $\pm$

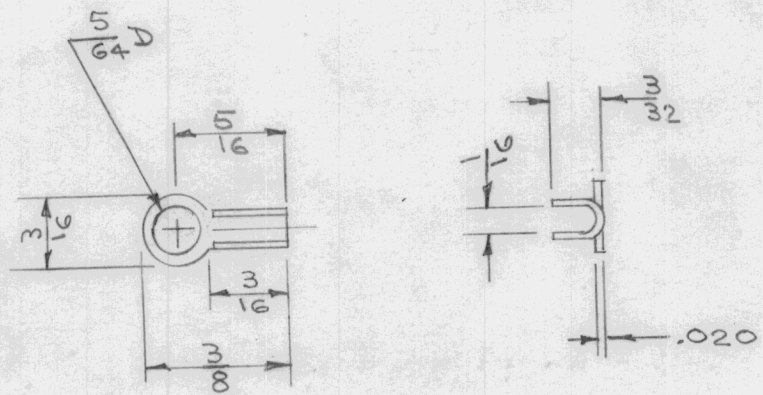
DRILL, PUNCH, COMMERCIAL STOCK SIZES AND MANUFACTURERS TOLERANCES ARE NOT INCLUDED.

TE-124

IF IT IS FOUND DESIRABLE TO CHANGE ANY TOLERANCE OR OTHER DETAIL SPECIFIED ON THIS DRAWING NOTIFY THE PURCHASER PROMPTLY.

MAXIMUM ALLOWABLE TOLERANCES HAVE BEEN DETERMINED AND DEVIATIONS WILL BE CAUSE FOR REJECTION. REMOVE ALL BURRS AND SHARP EDGES

USED ON			
MODEL	PROJECT NO.	ASS'Y. NO.	DATE



NOTE  
DIMENSIONS FOR REF. ONLY

Part of CA-152 (PL-54)

REQ.	ITEM	PART NO.	DESCRIPTION	SYMBOL
		.020	THE TECHNICAL MATERIEL CORP. MAMARONECK, NEW YORK	
		STOCK SIZE		
		BRASS	TERMINAL CORD TIP	
		MATERIAL WEIGHT PER PC.		
		TYPE & TEMPER	JADe	
		HEAT TREAT. SPEC.	DRAWN	ELEC. DES. APP.
		FINISH & SPEC. NO.	C.E.D.	MECH. DES. APP.
			CHECKED	FINAL APPROVAL
				TE-124

ISSUE	ITEM	CHANGED FROM	DATE	CN. NO.	DRAFTS	CHECKER	ENG. APP.
TOLERANCES			SCALE $\frac{1}{8}$				
ALL OTHERS	DEC. DIM. $\pm$ FRAC. DIM. $\pm$ ANGULAR DIM. $\pm$		DRILL, PUNCH, COMMERCIAL STOCK SIZES AND MANUFACTURERS TOLERANCES ARE NOT INCLUDED.				

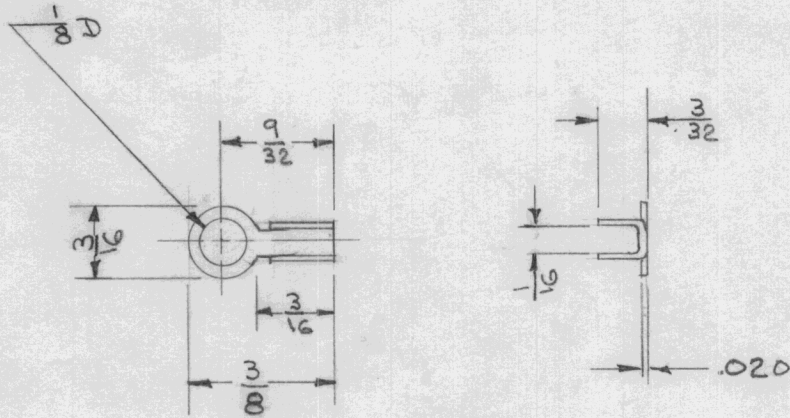
IF IT IS FOUND DESIRABLE TO CHANGE ANY TOLERANCE OR OTHER DETAIL SPECIFIED ON THIS DRAWING NOTIFY THE PURCHASER PROMPTLY.

TE-125

MAXIMUM ALLOWABLE TOLERANCES HAVE BEEN DETERMINED AND DEVIATIONS WILL BE CAUSE FOR REJECTION. REMOVE ALL BURRS AND SHARP EDGES

USED ON

MODEL	PROJECT NO.	ASS'Y. NO.	DATE
			2-12-53



DIMENSIONS FOR REFERENCE ONLY.

REF: PATTON - MAC GUYER CO. \* TM50

REQ.	ITEM	PART NO.	DESCRIPTION	SYMBOL
		.020	THE TECHNICAL MATERIEL CORP.	
		STOCK SIZE	MAMARONECK, NEW YORK	
		BRASS	TERMINAL	
		MATERIAL	CORD TIP	
		WEIGHT PER PC.		
		TYPE & TEMPER	DATE 2-16-53	
			DRAWN	ELEC. DES. APP. MECH. DES. APP.
			C.D.D. 2-16-53	
		HEAT TREAT. SPEC.	CHECKED	FINAL APPROVAL
		NICKEL		TE-125
		FINISH & SPEC. NO.		

ISSUE	ITEM	ORIGINAL RELEASE	8/18/69	CW			
		CHANGED FROM	DATE	CN. NO.	DRAFTS	CHECKER	ENG. APP.
TOLERANCES			SCALE				
ALL OTHERS	DEC. DIM. ± FRAC. DIM. ± ANGULAR DIM. ±	DRILL, PUNCH, COMMERCIAL STOCK SIZES AND MANUFACTURERS TOLERANCES ARE NOT INCLUDED.					

IF IT IS FOUND DESIRABLE TO CHANGE ANY TOLERANCE OR OTHER DETAIL SPECIFIED ON THIS DRAWING NOTIFY THE PURCHASER PROMPTLY.

MAXIMUM ALLOWABLE TOLERANCES HAVE BEEN DETERMINED AND DEVIATIONS WILL BE CAUSE FOR REJECTION. REMOVE ALL BURRS AND SHARP EDGES

TE-126  $\emptyset$

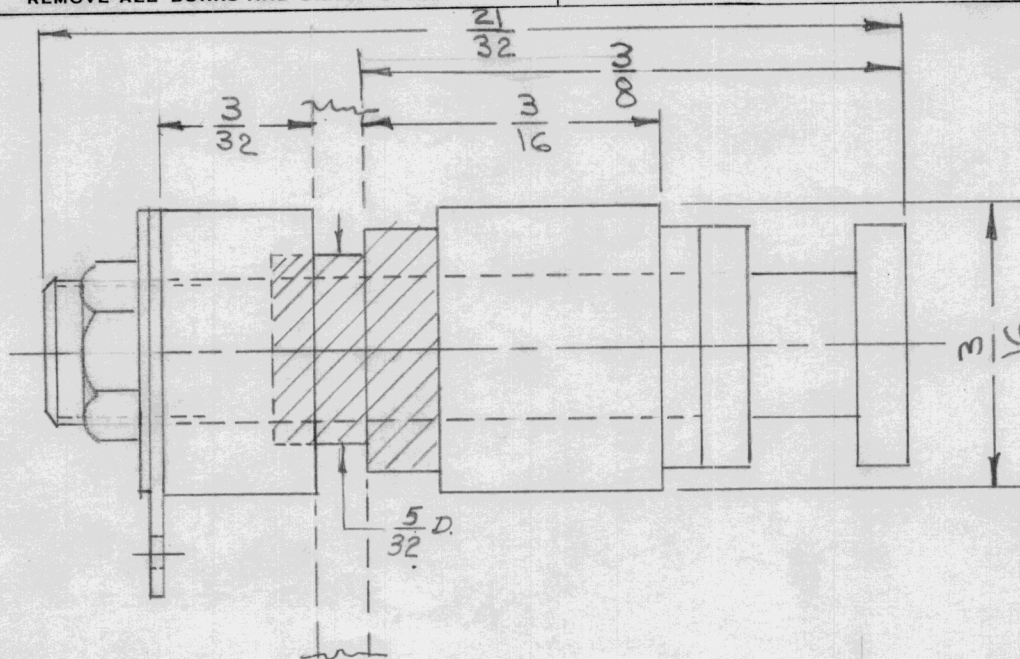
USED ON

MODEL

PROJECT NO.

ASS'Y. NO.

DATE



SPECIFICATIONS

STUD: BRASS, HOT TINNED.  
 INSULATOR: STEATITE, GLAZED, L-3  
 OR BETTER PER SPEC. JAN-1-10  
 WASHER & GLAND: NEOPRENE -60°F TO -225°F  
 LUG, SOLDER: COPPER, TINNED.  
 SPLIT WASHER: PHOSPHOR BRONZE  
 NUT: HEX, BRASS TINNED

REF: HELDOR # 187-A

REQ.	ITEM	PART NO.	DESCRIPTION	SYMBOL
			THE TECHNICAL MATERIEL CORP. MAMARONECK. NEW YORK	
		STOCK SIZE		
		MATERIAL	WEIGHT PER PC.	
		TYPE & TEMPER		
		HEAT TREAT. SPEC.		
		FINISH & SPEC. NO.		

THE TECHNICAL MATERIEL CORP.  
MAMARONECK. NEW YORK

TURRET HEAD  
BUSHING

NO. 3-553  
DRAWN

ELEC. DES. APP. MECH. DES. APP.

CHECKED

FINAL APPROVAL

TE-126  $\emptyset$

ORIGINAL RELEASE

9/26/69

(W)

ISSUE ITEM CHANGED FROM DATE CN. NO. DRAFTS CHECKER ENG. APP.

TOLERANCES

SCALE

ALL OTHERS  
DEC. DIM.  $\pm$   
FRAC. DIM.  $\pm$   
ANGULAR DIM.  $\pm$

DRILL, PUNCH, COMMERCIAL STOCK  
SIZES AND MANUFACTURERS  
TOLERANCES ARE NOT INCLUDED.

IF IT IS FOUND DESIRABLE TO CHANGE ANY TOLERANCE OR OTHER DETAIL SPECIFIED ON THIS DRAWING NOTIFY THE PURCHASER PROMPTLY.

# STANDARD DRAWING

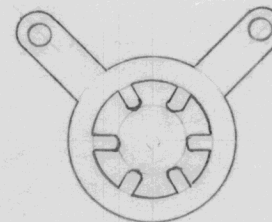
TE-128

MAXIMUM ALLOWABLE TOLERANCES HAVE BEEN DETERMINED AND DEVIATIONS WILL BE CAUSE FOR REJECTION. REMOVE ALL BURRS AND SHARP EDGES

### USED ON

MODEL	PROJECT NO.	ASS'Y. NO.	DATE
-------	-------------	------------	------

TMC NO.	CAT. NO.	SCREW SIZE
TE-128-1		4-40
TE-128-2		6-32
TE-128-3		8-32



REF.

REQ.	ITEM	PART NO.	DESCRIPTION	SYMBOL
			<b>THE TECHNICAL MATERIEL CORP.</b>	
			MAMARONECK, NEW YORK	
STOCK SIZE			TERMINAL, LOCKING	
MATERIAL			DUAL TERMINALS	
WEIGHT PER PC.				
TYPE & TEMPER			C.DD	
			DRAWN	ELEC. DES. APP. MECH. DES. APP.
			ADD	PPB
HEAT TREAT. SPEC.			CHECKED	FINAL APPROVAL
FINISH & SPEC. NO.				TE-128

ISSUE	ITEM	CHANGED FROM	DATE	CN. NO.	DRAFTS	CHECKER	ENG. APP.
-------	------	--------------	------	---------	--------	---------	-----------

TOLERANCES

SCALE

ALL OTHERS

DEC. DIM.  $\pm$   
 FRAC. DIM.  $\pm$   
 ANGULAR DIM.  $\pm$

DRILL, PUNCH, COMMERCIAL STOCK SIZES AND MANUFACTURERS TOLERANCES ARE NOT INCLUDED.



IF IT IS FOUND DESIRABLE TO CHANGE ANY TOLERANCE OR OTHER DETAIL SPECIFIED ON THIS DRAWING NOTIFY THE PURCHASER PROMPTLY.

# STANDARD DRAWING

TE-129

MAXIMUM ALLOWABLE TOLERANCES HAVE BEEN DETERMINED AND DEVIATIONS WILL BE CAUSE FOR REJECTION. REMOVE ALL BURRS AND SHARP EDGES

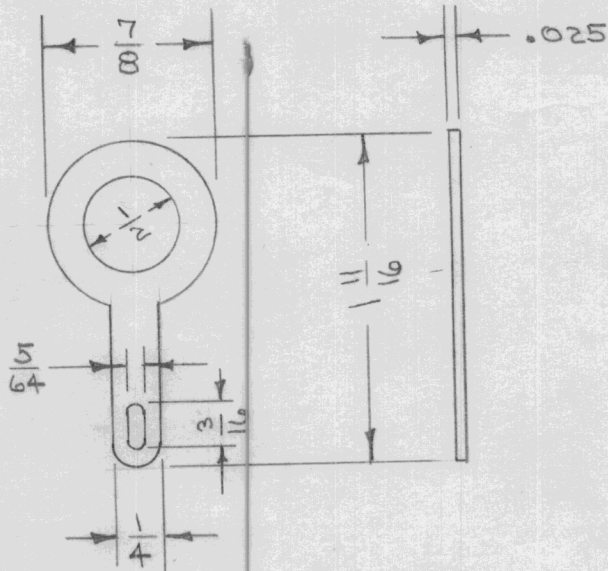
USED ON

MODEL

PROJECT NO.

ASS'Y. NO.

DATE



DIMENSIONS FOR REF. ONLY

REF: ZIERICK MFG. CO. CAT. NO. 379

REQ.	ITEM	PART NO.	DESCRIPTION	SYMBOL
		.025 THICK	THE TECHNICAL MATERIEL CORP. MAMARONECK, NEW YORK	
		STOCK SIZE		
		COPPER	TERMINAL LUG	
		MATERIAL	WEIGHT PER PC.	
		TYPE & TEMPER	CSD. 5-22-53	
			DRAWN	ELEC. DES. APP. MECH. DES. APP.
		HEAT TREAT. SPEC.	JADe	FINAL APPROVAL
		FINISH & SPEC. NO.	CHECKED	TE-129

ISSUE	ITEM	CHANGED FROM	DATE	CN. NO.	DRAFTS	CHECKER	ENG. APP.
		TOLERANCES					

ALL OTHERS	DEC. DIM. $\pm$	FRAC. DIM. $\pm$	ANGULAR DIM. $\pm$	SCALE	DRILL, PUNCH, COMMERCIAL STOCK SIZES AND MANUFACTURERS TOLERANCES ARE NOT INCLUDED.

IF IT IS FOUND DESIRABLE TO CHANGE ANY TOLERANCE OR OTHER DETAIL SPECIFIED ON THIS DRAWING NOTIFY THE PURCHASER PROMPTLY.

TE-130

MAXIMUM ALLOWABLE TOLERANCES HAVE BEEN DETERMINED AND DEVIATIONS WILL BE CAUSE FOR REJECTION. REMOVE ALL BURRS AND SHARP EDGES

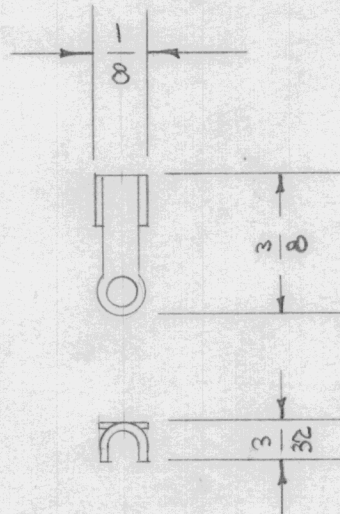
USED ON

MODEL

PROJECT NO.

ASS'Y. NO.

DATE



DIMENSIONS FOR REF. ONLY

REF.: KELLOGG SWITCHBOARD & SUPPLY CO. CAT. # 2986

REQ.	ITEM	PART NO.	DESCRIPTION	SYMBOL
			<b>THE TECHNICAL MATERIEL CORP.</b>	
			MAMARONECK, NEW YORK	
STOCK SIZE				
			TERMINAL, CORD TIP	
		MATERIAL	WEIGHT PER PC.	
			C.D.D. 5-25-53	
TYPE & TEMPER			DRAWN	ELEC. DES. APP. MECH. DES. APP.
			JAD	PJB
HEAT TREAT. SPEC.			CHECKED	FINAL APPROVAL
			TE-130	
FINISH & SPEC. NO.				

ISSUE ITEM CHANGED FROM DATE CN. NO. DRAFTS CHECKER ENG. APP.

TOLERANCES

SCALE  $\frac{1}{16}$

DRILL, PUNCH, COMMERCIAL STOCK SIZES AND MANUFACTURERS TOLERANCES ARE NOT INCLUDED.

ALL OTHERS  
DEC. DIM.  $\pm$   
FRAC. DIM.  $\pm$   
ANGULAR DIM.  $\pm$

IF IT IS FOUND DESIRABLE TO CHANGE ANY TOLERANCE OR OTHER DETAIL SPECIFIED ON THIS DRAWING NOTIFY THE PURCHASER PROMPTLY.

# STANDARD DRAWING

TE-131 A

MAXIMUM ALLOWABLE TOLERANCES HAVE BEEN DETERMINED AND DEVIATIONS WILL BE CAUSE FOR REJECTION. REMOVE ALL BURRS AND SHARP EDGES

USED ON

MODEL

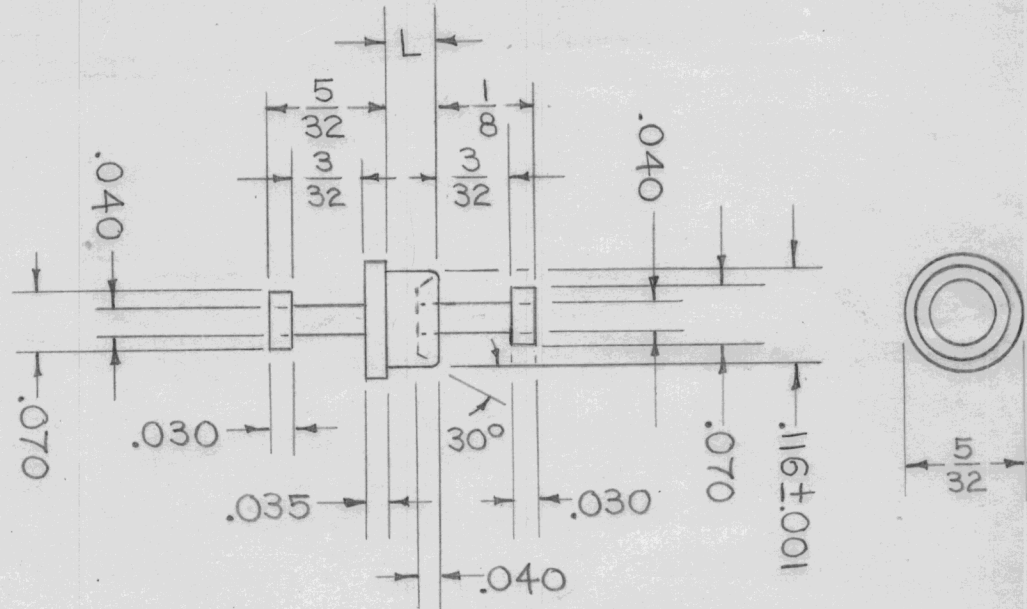
PROJECT NO.

ASS'Y. NO.

DATE

TMC NO.	CAT. NO.	L	T
TE-131-1	3555-63A	.075	1/32
TE-131-2	3555-63B	.105	1/16
TE-131-3	3555-63C	.135	3/32
TE-131-4	3555-63D	.165	1/8

T - THICKNESS OF MTG. BD.  
L - LENGTH OF SHANK OF LUG.



DIMENSIONS FOR REF. ONLY

REF.: PRECISION METAL PRODUCTS CO.

REQ.	ITEM	PART NO.	DESCRIPTION	SYMBOL
	#		THE TECHNICAL MATERIEL CORP. MAMARONECK, NEW YORK	
		STOCK SIZE		
	BRASS	#	TERMINAL, MIDGET	
		MATERIAL WEIGHT PER PC.	DOUBLE END	
		TYPE & TEMPER	C.D.D. 5/7/53	
			DRAWN	ELEC. DES. APP. MECH. DES. APP.
			H.A.D. 5/8/53	
		HEAT TREAT. SPEC.	CHECKED	FINAL APPROVAL
		SILVER PLATE .0003 THK.		
		FINISH & SPEC. NO.		

A	ISSUE	ITEM	CHANGED FROM	DATE	CN. NO.	DRAFTS	CHECKER	ENG. APP.
-			CAT. NO. & L. COLUMNS REVISED	8.17.64	12122	LSB	@	gc

TOLERANCES	SCALE	DRILL, PUNCH, COMMERCIAL STOCK SIZES AND MANUFACTURERS TOLERANCES ARE NOT INCLUDED.
ALL OTHERS DEC. DIM. ± FRAC. DIM. ± ANGULAR DIM. ±	#	

TE-131 A

IF IT IS FOUND DESIRABLE TO CHANGE ANY TOLERANCE OR OTHER DETAIL SPECIFIED ON THIS DRAWING NOTIFY THE PURCHASER PROMPTLY.

# STANDARD DRAWING

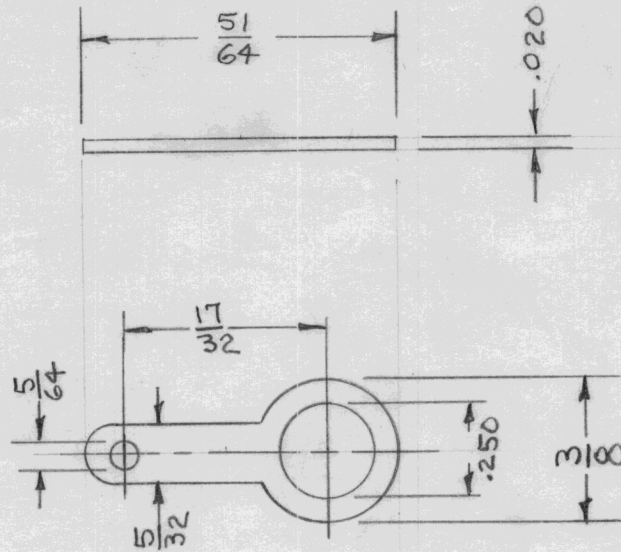
TE-132

MAXIMUM ALLOWABLE TOLERANCES HAVE BEEN DETERMINED AND DEVIATIONS WILL BE CAUSE FOR REJECTION. REMOVE ALL BURRS AND SHARP EDGES

RELEASED

USED ON

MODEL	PROJECT NO.	ASS'Y. NO.	DATE
DAC-1	180	A-455	5-5-53



REF: ZIERICK MFG. CORP. CAT. # 29

REQ.	ITEM	PART NO.	DESCRIPTION	SYMBOL
		.020	THE TECHNICAL MATERIEL CORP.	
		STOCK SIZE	MAMARONECK. NEW YORK	
		BRASS	TERMINAL, LUG	
		MATERIAL		
		WEIGHT PER PC.		
		TYPE & TEMPER	AD 5/5/53	G.T.O
			DRAWN	ELEC. DES. APP.
			C.R.D.	MECH. DES. APP.
		HEAT TREAT. SPEC.	CHECKED	FINAL APPROVAL
		HOT, TINNED		TE-132
		FINISH & SPEC. NO.		

ISSUE	ITEM	CHANGED FROM	DATE	CN. NO.	DRAFTS	CHECKER	ENG. APP.

TOLERANCES	SCALE
	1

ALL OTHERS	DEC. DIM. ±	FRAC. DIM. ±	ANGULAR DIM. ±	DRILL, PUNCH, COMMERCIAL STOCK SIZES AND MANUFACTURERS TOLERANCES ARE NOT INCLUDED.

IF IT IS FOUND DESIRABLE TO CHANGE ANY TOLERANCE OR OTHER DETAIL SPECIFIED ON THIS DRAWING NOTIFY THE PURCHASER PROMPTLY.

# STANDARD DRAWING

TE-133

MAXIMUM ALLOWABLE TOLERANCES HAVE BEEN DETERMINED AND DEVIATIONS WILL BE CAUSE FOR REJECTION. REMOVE ALL BURRS AND SHARP EDGES

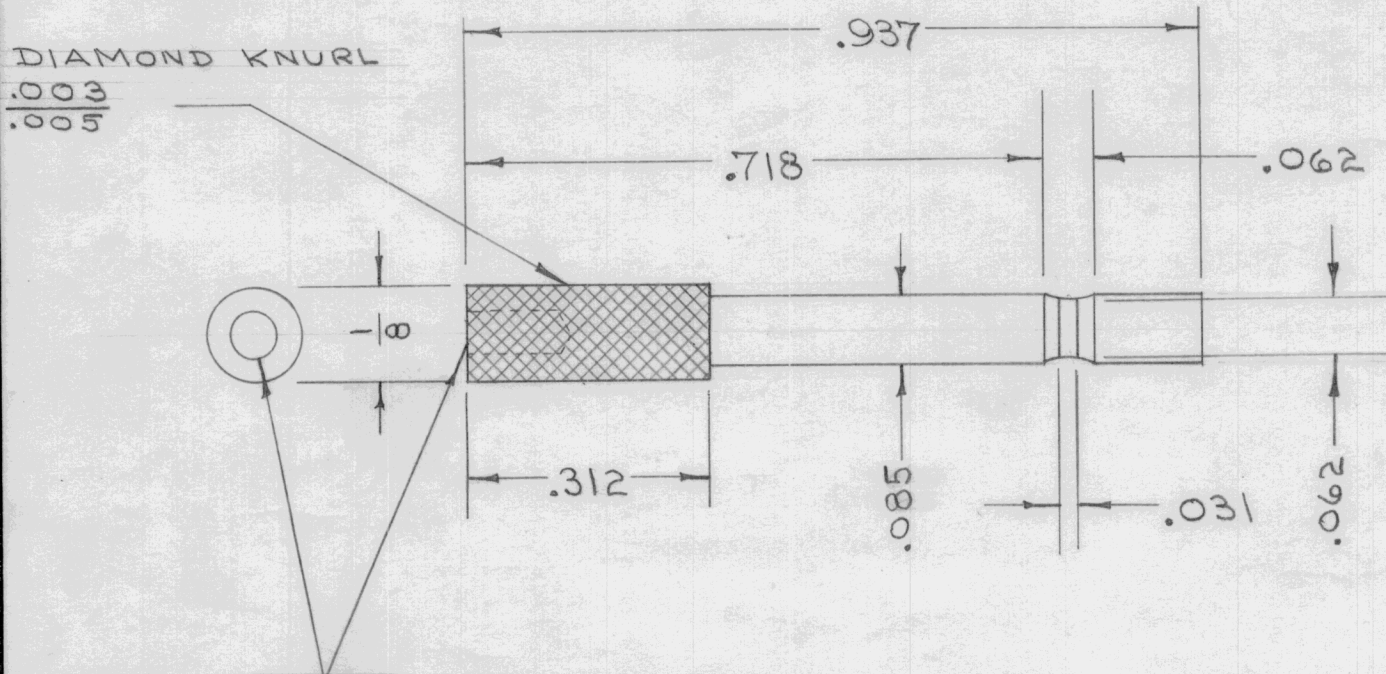
USED ON

MODEL

PROJECT NO.

ASS'Y. NO.

DATE



DRILL 1/16 (.062) D. 5/32 DEEP

REQ.	ITEM	PART NO.	DESCRIPTION	SYMBOL
		1/8 ROD	THE TECHNICAL MATERIEL CORP. MAMARONECK, NEW YORK	
		STOCK SIZE		
		BRASS	TERMINAL, CORD TIP	
		MATERIAL		
		—#—		
		WEIGHT PER PC.		
		#		
		TYPE & TEMPER	C.D.D. 5/7/53	
		#	DRAWN	ELEC. DES. APP. MECH. DES. APP.
		HEAT TREAT. SPEC.	WDE	
		S-135	CHECKED	FINAL APPROVAL
		NICKEL PLATE		
		FINISH & SPEC. NO.		

ISSUE ITEM CHANGED FROM DATE CN. NO. DRAFTS CHECKER ENG. APP.

TOLERANCES

SCALE

ALL OTHERS  
DEC. DIM. ± .005  
FRAC. DIM. ± 1/64  
ANGULAR DIM. ±

DRILL, PUNCH, COMMERCIAL STOCK SIZES AND MANUFACTURERS TOLERANCES ARE NOT INCLUDED.

TE-133

IF IT IS FOUND DESIRABLE TO CHANGE ANY TOLERANCE OR OTHER DETAIL SPECIFIED ON THIS DRAWING NOTIFY THE PURCHASER PROMPTLY.

MAXIMUM ALLOWABLE TOLERANCES HAVE BEEN DETERMINED AND DEVIATIONS WILL BE CAUSE FOR REJECTION. REMOVE ALL BURRS AND SHARP EDGES

TE-134



USED ON

MODEL

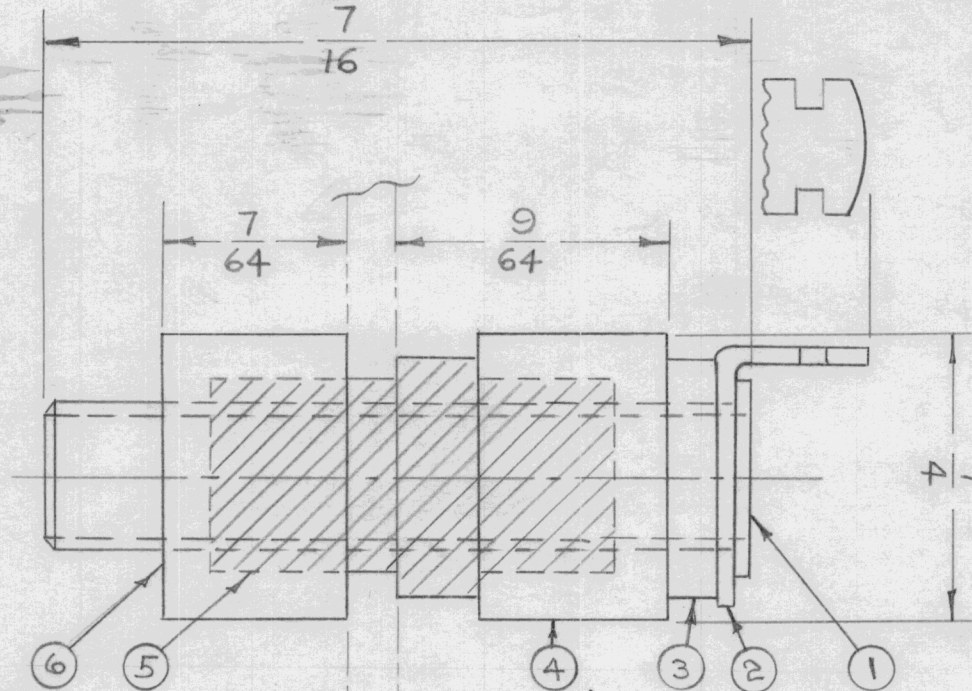
PROJECT NO.

ASS'Y. NO.

DATE

A-471

5-22-53



- 1- EYELET
2- LUG
3- WASHER
4- TOP STEATITE
5- GLAND
6- BOTTOM STEATITE

DIMENSIONS FOR REF. ONLY

NOTE-

PANEL MTG. HOLE 1/64
PANEL THICKNESS-

+0.000
-0.005

.037 MAX., .020 MIN.

HELDOR BUSHING & TERMINAL CO. 250 E

Table with columns: REQ., ITEM, PART NO., DESCRIPTION, SYMBOL. Includes technical specifications and drawing information.

Table with columns: ORIGINAL RELEASE, DATE, CN. NO., DRAFTS, CHECKER, ENG. APP., TOLERANCES, SCALE, DRILL, PUNCH, COMMERCIAL STOCK SIZES AND MANUFACTURERS TOLERANCES ARE NOT INCLUDED.

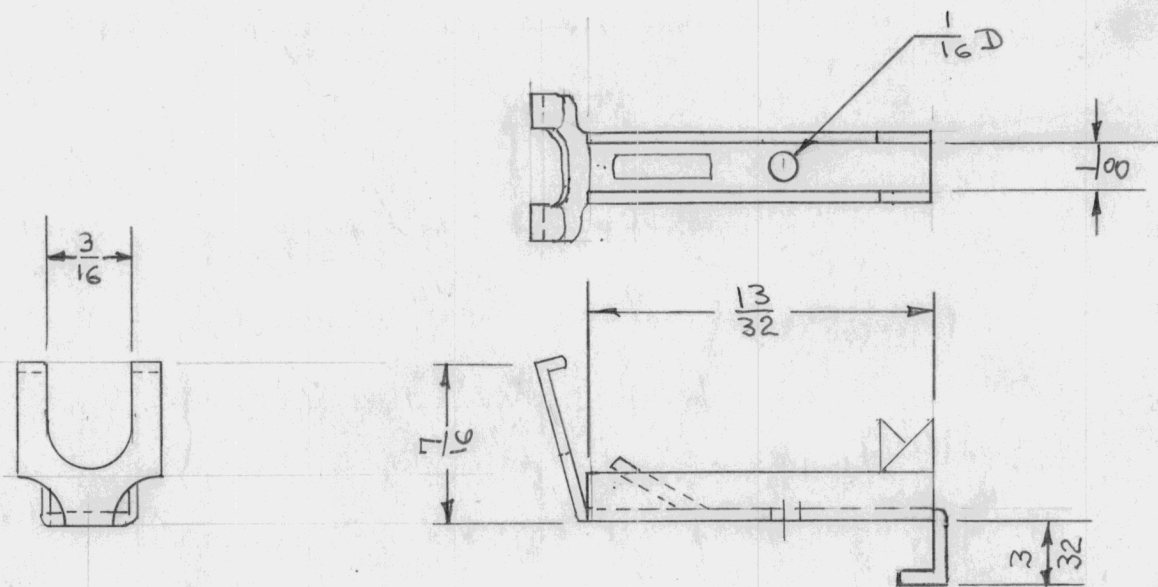
IF IT IS FOUND DESIRABLE TO CHANGE ANY TOLERANCE OR OTHER DETAIL SPECIFIED ON THIS DRAWING NOTIFY THE PURCHASER PROMPTLY.

TE-136

MAXIMUM ALLOWABLE TOLERANCES HAVE BEEN DETERMINED AND DEVIATIONS WILL BE CAUSE FOR REJECTION. REMOVE ALL BURRS AND SHARP EDGES

USED ON

MODEL	PROJECT NO.	ASS'Y. NO.	DATE
DDR-2D		A-491	7-21-53



REF: H. JONES DIV.

REQ.	ITEM	PART NO.	DESCRIPTION	SYMBOL
			THE TECHNICAL MATERIEL CORP.	
			MAMARONECK. NEW YORK	
			FANNING STRIP LUGS	
		STOCK SIZE		
		MATERIAL	WEIGHT PER PC.	
		TYPE & TEMPER		
			DATE 7-21-53	
			DRAWN	ELEC. DES. APP. MECH. DES. APP.
			CHECKED	FINAL APPROVAL
		HEAT TREAT. SPEC.		
		FINISH & SPEC. NO.		
			TE-136	

ISSUE ITEM CHANGED FROM DATE CN. NO. DRAFTS CHECKER ENG. APP.

TOLERANCES

SCALE

ALL OTHERS

DEC. DIM.  $\pm$   
FRAC. DIM.  $\pm$   
ANGULAR DIM.  $\pm$

DRILL, PUNCH, COMMERCIAL STOCK SIZES AND MANUFACTURERS TOLERANCES ARE NOT INCLUDED.

IF IT IS FOUND DESIRABLE TO CHANGE ANY TOLERANCE OR OTHER DETAIL SPECIFIED ON THIS DRAWING NOTIFY THE PURCHASER PROMPTLY.

# STANDARD DRAWING

TE-137

MAXIMUM ALLOWABLE TOLERANCES HAVE BEEN DETERMINED AND DEVIATIONS WILL BE CAUSE FOR REJECTION.  
REMOVE ALL BURRS AND SHARP EDGES

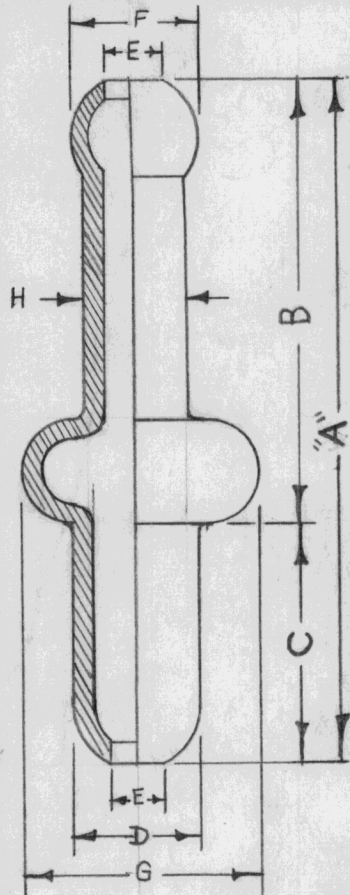
USED ON

MODEL

PROJECT NO.

ASS'Y. NO.

DATE



DWG.	T.M.C. NO.	CAT. NO.	LENGTH	BODY LENGTH	STAKING LENGTH	STAKING DIA.	HOLE SIZE	END BEAD DIA.	SHOULDER BEAD DIA.	BODY DIA.	TERM. STYLE	PANEL THICKNESS
			A	B	C	D	E	F	G	H		
	TE-137-1	T84-1	.381	.266	.115	.093	.046	.100	.125	.084	2 BEADS	3/64 TO 5/64
	TE-137-2	T84-2	.406	.266	.140	.093	.046	.100	.125	.084	2 BEADS	5/64 TO 7/64
	TE-137-3	T100-9	.422	.282	.140	.112	.048	.120	.156	.100	2 BEADS	5/64 TO 7/64
	TE-137-4	T100-8	.427	.282	.145	.093 SQ.	.048	.120	.156	.100	2 BEADS SQ. END	5/64 TO 7/64
	TE-137-5	T100-3	.600	.460	.140	.112	.048	.120	.156	.100	3 BEADS	5/64 TO 7/64
	TE-137-6	T110-7	.591	.406	.185	.145	.046	.145	.185	.110	3 BEADS	1/8 TO 5/32
	TE-137-7	T100-10	.660	.460	.200	.112	.048	.120	.156	.100	3 BEADS	1/8 TO 5/32
	TE-137-8	T100-5	.665	.460	.205	.093 SQ.	.048	.120	.156	.100	3 BEADS SQ. END	1/8 TO 5/32
	TE-137-9	T100-6	.605	.460	.145	.093 SQ.	.048	.120	.156	.100	3 BEADS SQ. END	5/64 TO 7/64

REF.-THE BEAD CHAIN MFG. CO. (PG. 7)

REQ.	ITEM	PART NO.	DESCRIPTION	SYMBOL
		//	THE TECHNICAL MATERIEL CORP. MAMARONECK. NEW YORK	
		STOCK SIZE		
		//	TERMINAL	
		MATERIAL	MULTI-SWAGE	
		WEIGHT PER PC.		
		//		
		TYPE & TEMPER	16 9/8/53	
		//		
		HEAT TREAT. SPEC.		
		//		
		FINISH & SPEC. NO.		

ISSUE	ITEM	CHANGED FROM	DATE	CN. NO.	DRAFTS	CHECKER	ENG. APP.
TOLERANCES			SCALE //				
ALL OTHERS	DEC. DIM. ± FRAC. DIM. ± ANGULAR DIM. ±		DRILL, PUNCH, COMMERCIAL STOCK SIZES AND MANUFACTURERS TOLERANCES ARE NOT INCLUDED.				

DRAWN: [Signature]  
ELEC. DES. APP.: [Signature]  
MECH. DES. APP.: [Signature]  
CHECKED: [Signature]  
FINAL APPROVAL: [Signature]  
TE-137



IF IT IS FOUND DESIRABLE TO CHANGE ANY TOLERANCE OR OTHER DETAIL SPECIFIED ON THIS DRAWING NOTIFY THE PURCHASER PROMPTLY.

# STANDARD DRAWING

TE-138

MAXIMUM ALLOWABLE TOLERANCES HAVE BEEN DETERMINED AND DEVIATIONS WILL BE CAUSE FOR REJECTION. REMOVE ALL BURRS AND SHARP EDGES

REQ. PER UNIT

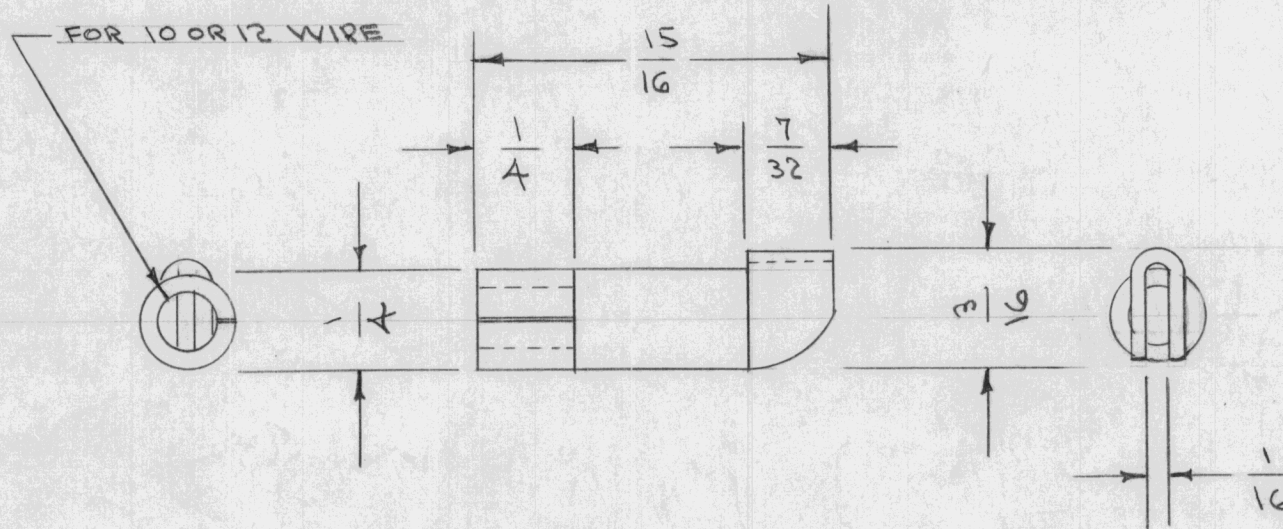
USED ON

MODEL

PROJECT NO.

ASS'Y. NO.

DATE



DIMENSIONS FOR REF. ONLY

REF. AIRCRAFT-MARINE PRODUCTS CAT. NO. 31939

REQ.	ITEM	PART NO.	DESCRIPTION	SYMBOL
		#	THE TECHNICAL MATERIEL CORP. MAMARONECK. NEW YORK	
		STOCK SIZE		
	COPPER	#	TERMINAL, KNIFE	
	MATERIAL	WEIGHT PER PC.	DISCONNECT	
			C.D.D.	
		TYPE & TEMPER	APB	WJC
			DRAWN	ELEC. DES. APP.
			MECH. DES. APP.	
		HEAT TREAT. SPEC.	APB	WJC
		FINISH & SPEC. NO.	CHECKED	FINAL APPROVAL
				TE-138

ISSUE	ITEM	CHANGED FROM	DATE	CN. NO.	DRAFTS	CHECKER	ENG. APP.
TOLERANCES			SCALE				
ALL OTHERS	DEC. DIM. ±	DRILL, PUNCH, COMMERCIAL STOCK SIZES AND MANUFACTURERS TOLERANCES ARE NOT INCLUDED.					
	FRAC. DIM. ±						
	ANGULAR DIM. ±						

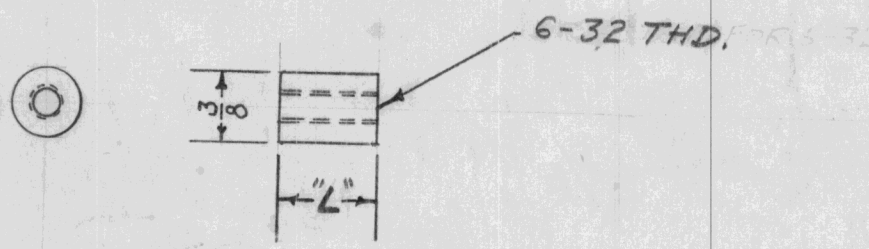
IF IT IS FOUND DESIRABLE TO CHANGE ANY TOLERANCE OR OTHER DETAIL SPECIFIED ON THIS DRAWING NOTIFY THE PURCHASER PROMPTLY.

TE-139 B

MAXIMUM ALLOWABLE TOLERANCES HAVE BEEN DETERMINED AND DEVIATIONS WILL BE CAUSE FOR REJECTION. REMOVE ALL BURRS AND SHARP EDGES

TMC. NO.	"L"
TE-139-1	3/8
TE-139-2	1/2

QUAN. PER UNIT	USED ON			
	MODEL	PROJECT NO.	ASS'Y. NO.	DATE
1	VOX	101	A-585	11-9-53
1	PMO	285		8/18/54
1	RTF			2-3-56



JAN-I-10, GRADE L4 OR BETTER  
REF: ISOLANTITE INC.

REQ.	ITEM	PART NO.	DESCRIPTION	SYMBOL
		FF	THE TECHNICAL MATERIEL CORP. MAMARONECK. NEW YORK	
		STOCK SIZE		
		STEATITE	THREADED SPACER, STEATITE	
		MATERIAL	WEIGHT PER PC.	
		GLAZED		
		TYPE & TEMPER	16 11-9-53	
			DRAWN	ELEC. DES. APP. MECH. DES. APP.
			CHECKED	FINAL APPROVAL
		HEAT TREAT. SPEC.		
		FINISH & SPEC. NO.		

ISSUE	ITEM	CHANGED FROM	DATE	CN. NO.	DRAFTS	CHECKER	ENG. APP.
B	2	JAN REF. ADDED	1/23/54	2	JAL	WSP	
A	1	TABLE ADDED	1/23/54	1	16	JAL	WSP

TOLERANCES		SCALE FULL
ALL OTHERS	DEC. DIM. ± FRAC. DIM. ± ANGULAR DIM. ±	DRILL, PUNCH, COMMERCIAL STOCK SIZES AND MANUFACTURERS TOLERANCES ARE NOT INCLUDED.

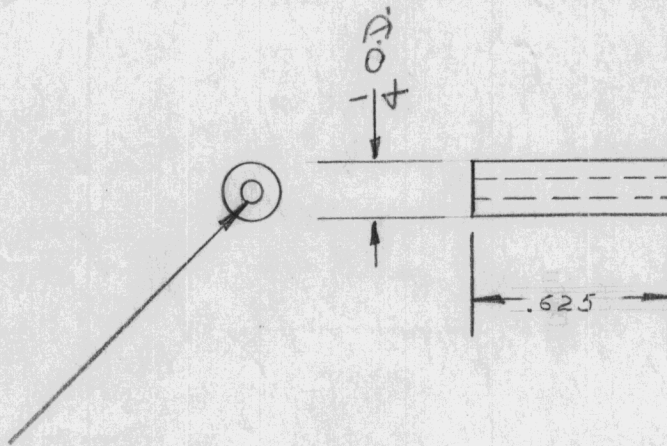
TE-139 B

IF IT IS FOUND DESIRABLE TO CHANGE ANY TOLERANCE OR OTHER DETAIL SPECIFIED ON THIS DRAWING NOTIFY THE PURCHASER PROMPTLY.

MAXIMUM ALLOWABLE TOLERANCES HAVE BEEN DETERMINED AND DEVIATIONS WILL BE CAUSE FOR REJECTION. REMOVE ALL BURRS AND SHARP EDGES

TE-140

QTY PER UNIT	USED ON			
	MODEL	PROJECT NO.	ASS'Y. NO.	DATE
3	A-1000		A-422	12/11/53



CLEARANCE HOLE FOR #6 M.S.

REF: H. SMITH

REQ.	ITEM	PART NO.	DESCRIPTION	SYMBOL
		4D	THE TECHNICAL MATERIEL CORP. MAMARONECK. NEW YORK	
		BRASS	SPACER	
		MATERIAL	WEIGHT PER PC.	
		TYPE & TEMPER		
		HEAT TREAT. SPEC.		
		FINISH & SPEC. NO.		

ISSUE	ITEM	CHANGED FROM	DATE	CN. NO.	DRAFTS	CHECKER	ENG. APP.

TOLERANCES	SCALE
ALL OTHERS DEC. DIM. $\pm .005$ FRAC. DIM. $\pm \frac{1}{64}$ ANGULAR DIM. $\pm$	DRILL, PUNCH, COMMERCIAL STOCK SIZES AND MANUFACTURERS TOLERANCES ARE NOT INCLUDED.

DRAWN	ELEC. DES. APP.	MECH. DES. APP.
JAD	AJT	WDL
C.W.D.	AJT	WDL

CHECKED	FINAL APPROVAL
	TE-140

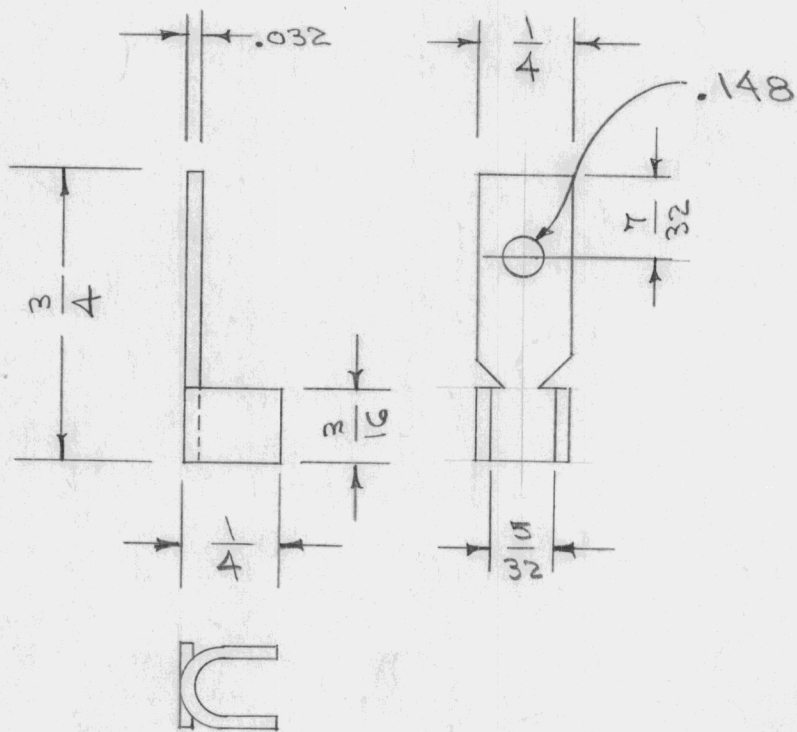
IF IT IS FOUND DESIRABLE TO CHANGE ANY TOLERANCE OR OTHER DETAIL SPECIFIED ON THIS DRAWING NOTIFY THE PURCHASER PROMPTLY.

TE-143 A

MAXIMUM ALLOWABLE TOLERANCES HAVE BEEN DETERMINED AND DEVIATIONS WILL BE CAUSE FOR REJECTION. REMOVE ALL BURRS AND SHARP EDGES

# STANDARD DRAWING

REQ. PER UNIT	USED ON			
	MODEL	PROJECT NO.	ASS'Y. NO.	DATE
3	RAC	112		10/13/54
4	RAC-12		A-990	4/15/55
4	RAC-7A			10/30/56



REF. ZIERICK MFG. CO. No. 407

REQ.	ITEM	PART NO.	DESCRIPTION	SYMBOL
			THE TECHNICAL MATERIEL CORP. MAMARONECK. NEW YORK	
STOCK SIZE			TERMINAL, KNIFE	
COPPER				
MATERIAL		WEIGHT PER PC.		
			COR. 6-21-55	
TYPE & TEMPER			DRAWN <i>WJL</i>	
			ELEC. DES. APP. MECH. DES. APP.	
HEAT TREAT. SPEC.			CHECKED <i>WJL</i> FINAL APPROVAL <i>WJL</i>	
HOT TINNED				
FINISH & SPEC. NO.			TE-143 A	

A	1	COMPLETE REVISION	6/21/55	1	CSO	JAL	WJL
ISSUE	ITEM	CHANGED FROM	DATE	CN. NO.	DRAFTS	CHECKER	ENG. APP.
TOLERANCES			SCALE				
ALL OTHERS			DRILL, PUNCH, COMMERCIAL STOCK SIZES AND MANUFACTURERS TOLERANCES ARE NOT INCLUDED.				

IF IT IS FOUND DESIRABLE TO CHANGE ANY TOLERANCE OR OTHER DETAIL SPECIFIED ON THIS DRAWING NOTIFY THE PURCHASER PROMPTLY.

# STANDARD DRAWING

TE-144

MAXIMUM ALLOWABLE TOLERANCES HAVE BEEN DETERMINED AND DEVIATIONS WILL BE CAUSE FOR REJECTION. REMOVE ALL BURRS AND SHARP EDGES

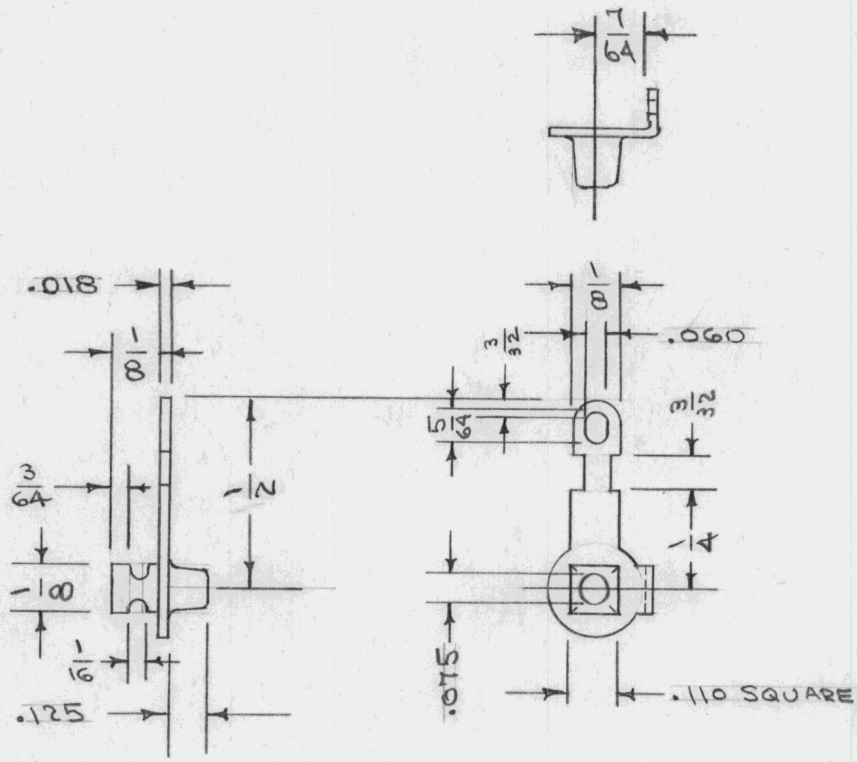
USED ON

MODEL

PROJECT NO.

ASSY. NO.

DATE



REF: ZIERICK MFG. CO. CAT. NO. 294

REQ.	ITEM	PART NO.	DESCRIPTION	SYMBOL
			<b>THE TECHNICAL MATERIEL CORP.</b>	
			MAMARONECK, NEW YORK	
STOCK SIZE				
BRASS			TERMINAL, EYLET	
MATERIAL			STRAIGHT TYPE	
WEIGHT PER PC.				
TYPE & TEMPER			C.D.D. 12-8-54 P.L.K. 1-28-55	
			WJ	
			DRAWN	
			ELEC. DES. APP.	
			MECH. DES. APP.	
HEAT TREAT. SPEC.			G.T.O	
FINISH & SPEC. NO.			CHECKED	
			FINAL APPROVAL	
			TE-144	

ISSUE	ITEM	CHANGED FROM	DATE	CN. NO.	DRAFTS	CHECKER	ENG. APP.
TOLERANCES		SCALE					
ALL OTHERS		DRILL, PUNCH, COMMERCIAL STOCK SIZES AND MANUFACTURERS TOLERANCES ARE NOT INCLUDED.					
		DEC. DIM. ±					
		FRAC. DIM. ±					
		ANGULAR DIM. ±					

IF IT IS FOUND DESIRABLE TO CHANGE ANY TOLERANCE OR OTHER DETAIL SPECIFIED ON THIS DRAWING NOTIFY THE PURCHASER PROMPTLY.

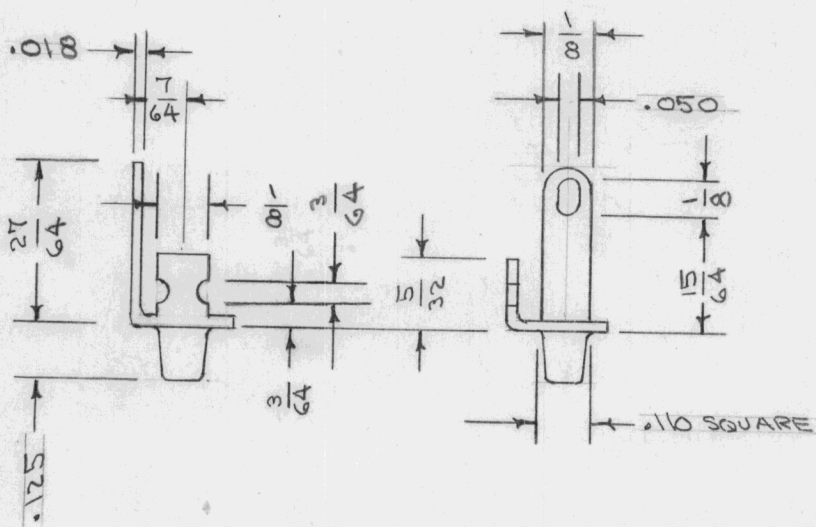
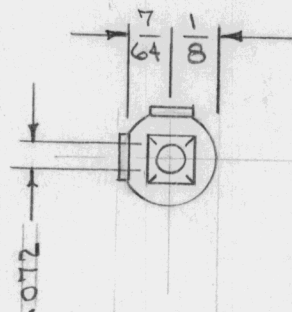
# STANDARD DRAWING

TE-145

MAXIMUM ALLOWABLE TOLERANCES HAVE BEEN DETERMINED AND DEVIATIONS WILL BE CAUSE FOR REJECTION. REMOVE ALL BURRS AND SHARP EDGES

USED ON

MODEL	PROJECT NO.	ASS'Y. NO.	DATE
-------	-------------	------------	------



REF: ZIERICK MFG. CO. CAT. NO. 241

REQ.	ITEM	PART NO.	DESCRIPTION	SYMBOL
			<b>THE TECHNICAL MATERIEL CORP.</b> MAMARONECK. NEW YORK	
STOCK SIZE			TERMINAL, EYELET	
BRASS			ANGLE TYPE	
MATERIAL WEIGHT PER PC.				
TYPE & TEMPER			C.D.D. 12-8-54 P.L.K. 1-28-55	
			DRAWN ELEC. DES. APP. MECH. DES. APP.	
			G.T.O	
HEAT TREAT. SPEC.			CHECKED FINAL APPROVAL	
HOT TINNED			TE-145	
FINISH & SPEC. NO.				

ISSUE	ITEM	CHANGED FROM	DATE	CN. NO.	DRAFTS	CHECKER	ENG. APP.
-------	------	--------------	------	---------	--------	---------	-----------

TOLERANCES

SCALE

ALL OTHERS  
DEC. DIM. ±  
FRAC. DIM. ±  
ANGULAR DIM. ±

DRILL, PUNCH, COMMERCIAL STOCK SIZES AND MANUFACTURERS TOLERANCES ARE NOT INCLUDED.

IF IT IS FOUND DESIRABLE TO CHANGE ANY TOLERANCE OR OTHER DETAIL SPECIFIED ON THIS DRAWING NOTIFY THE PURCHASER PROMPTLY.

# STANDARD DRAWING

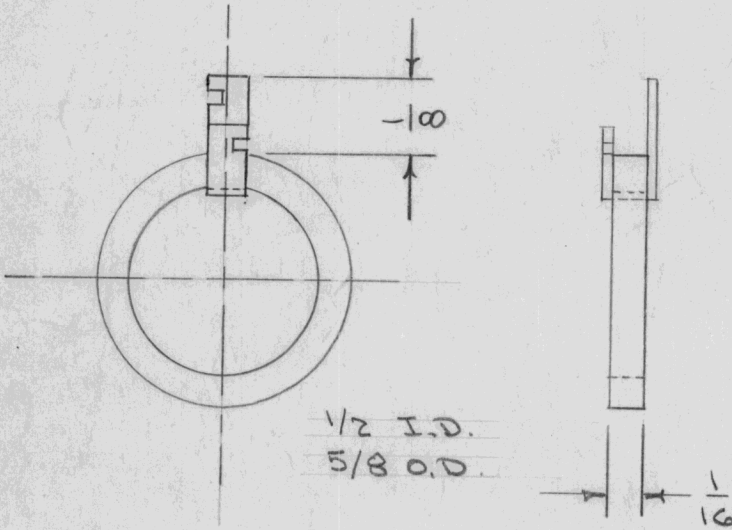
TE 146 C

MAXIMUM ALLOWABLE TOLERANCES HAVE BEEN DETERMINED AND DEVIATIONS WILL BE CAUSE FOR REJECTION. REMOVE ALL BURRS AND SHARP EDGES

USED ON

MODEL	PROJECT NO.	ASS'Y. NO.	DATE
-------	-------------	------------	------

NOTE THAT DASH NO. INDICATES NO. OF LUGS

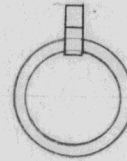


1/2 I.D.  
5/8 O.D.

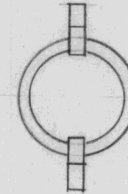
1/16

DIMENSIONS FOR REF. ONLY

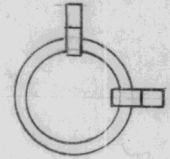
NOTE: PURCHASE TE 146-4 ONLY AND MODIFY AS REQUIRED.



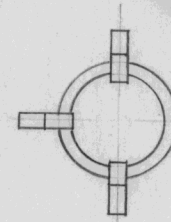
TE 146-1



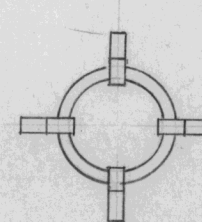
TE 146-2S  
(STRAIGHT)



TE 146-2A  
(ANGLED)



TE 146-3



TE 146-4

REQ.	ITEM	PART NO.	DESCRIPTION	SYMBOL
			<b>THE TECHNICAL MATERIEL CORP.</b> MAMARONECK. NEW YORK	
STOCK SIZE			COLLAR & LUG	
MATERIAL		WEIGHT PER PC.		
TYPE & TEMPER		COND. 12-8-54	HT.	102
HEAT TREAT. SPEC.		DRAWN	ELEC. DES. APP.	MECH. DES. APP.
FINISH & SPEC. NO.		P.L.K.	G.T.O.	
		CHECKED	FINAL APPROVAL	
				TE 146 C

C		ADDED PURCH. NOTE, DELETE REF. CAMBRIDGE THERMIONICS, ADDED S401-167	7-20-66	16591	RME	<i>[Signature]</i>	<i>[Signature]</i>
B	2	Ref: 1697 was X2049	2-6-58	2	<i>[Signature]</i>	<i>[Signature]</i>	<i>[Signature]</i>
A	1	MATERIAL CLARIFIED	12-7-56	1	<i>[Signature]</i>	<i>[Signature]</i>	<i>[Signature]</i>
ISSUE	ITEM	CHANGED FROM	DATE	CN. NO.	DRAFTS	CHECKER	ENG. APP.
TOLERANCES			SCALE S401-167(1697)				
ALL OTHERS	DEC. DIM. ± FRAC. DIM. ± ANGULAR DIM. ±		DRILL, PUNCH, COMMERCIAL STOCK SIZES AND MANUFACTURERS TOLERANCES ARE NOT INCLUDED.				

IF IT IS FOUND DESIRABLE TO CHANGE ANY TOLERANCE OR OTHER DETAIL SPECIFIED ON THIS DRAWING NOTIFY THE PURCHASER PROMPTLY.

# STANDARD DRAWING

TE-147

MAXIMUM ALLOWABLE TOLERANCES HAVE BEEN DETERMINED AND DEVIATIONS WILL BE CAUSE FOR REJECTION. REMOVE ALL BURRS AND SHARP EDGES

REQ. PER UNIT

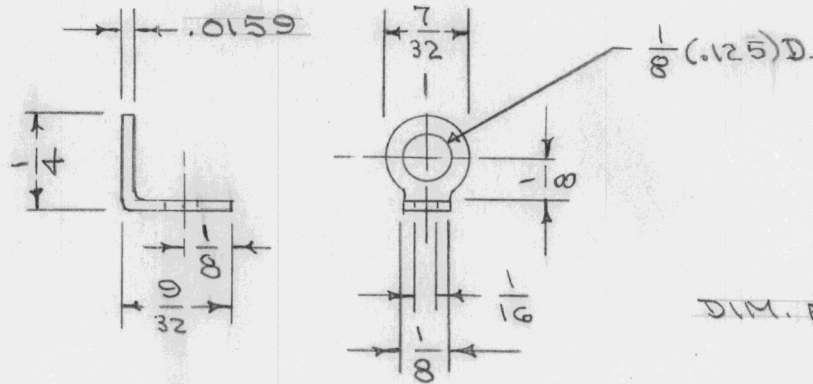
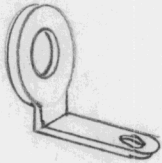
USED ON

MODEL

PROJECT NO.

ASS'Y. NO.

DATE



DIM. FOR REF. ONLY

ZIERICK MFG. CO. CAT. NO. 401

REQ.	ITEM	PART NO.	DESCRIPTION	SYMBOL
			THE TECHNICAL MATERIEL CORP.	
			MAMARONECK. NEW YORK	
		BRASS	LUG, TERMINAL	
		MATERIAL	WEIGHT PER PC.	
			ADD. 1-21-55	WDE
		TYPE & TEMPER	DRAWN	ELEC. DES. APP. MECH. DES. APP.
			fahe	WDE
		HEAT TREAT. SPEC.	CHECKED	FINAL APPROVAL
		HOT TINNED		TE-147
		FINISH & SPEC. NO.		

ISSUE	ITEM	CHANGED FROM	DATE	CN. NO.	DRAFTS	CHECKER	ENG. APP.
TOLERANCES			SCALE				
ALL OTHERS	DEC. DIM. ± FRAC. DIM. ± ANGULAR DIM. ±		DRILL, PUNCH, COMMERCIAL STOCK SIZES AND MANUFACTURERS TOLERANCES ARE NOT INCLUDED.				



# STANDARD DRAWING

TE 148 D

IF IT IS FOUND DESIRABLE TO CHANGE ANY TOLERANCE OR OTHER DETAIL SPECIFIED ON THIS DRAWING NOTIFY THE PURCHASER PROMPTLY.

MAXIMUM ALLOWABLE TOLERANCES HAVE BEEN DETERMINED AND DEVIATIONS WILL BE CAUSE FOR REJECTION. REMOVE ALL BURRS AND SHARP EDGES

REQ. PER UNIT

USED ON

MODEL

PROJECT NO.

ASS'Y. NO.

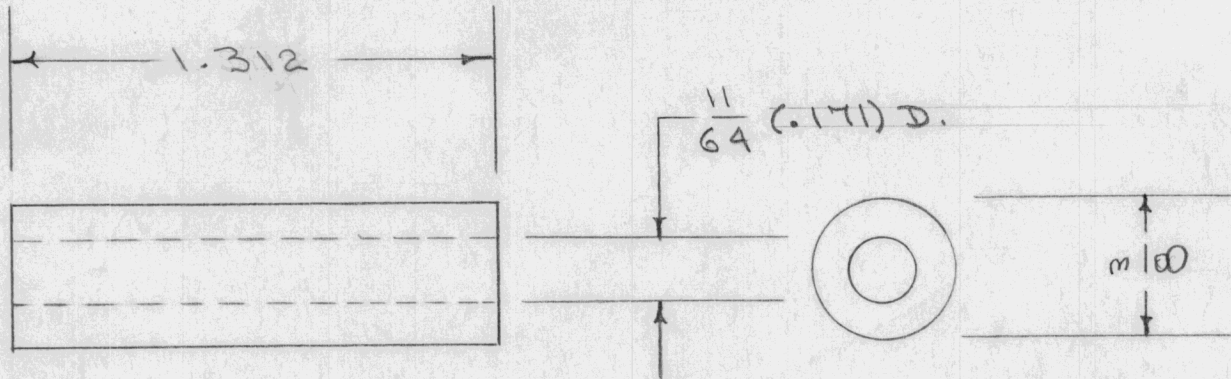
DATE

8

GPR

297

3-28-55



OBSOLETE

USE TE117-88

S401-8 S401-89 (SPECIAL)

REQ.	ITEM	PART NO.	DESCRIPTION	SYMBOL
		3/8 ROD	THE TECHNICAL MATERIEL CORP. MAMARONECK. NEW YORK	
		STOCK SIZE		
		BRASS	SPACER, SUB	
		MATERIAL	PANEL	GPR.
		WEIGHT PER PC.		
		TYPE & TEMPER	DRW. 3-28-55	###
		HEAT TREAT. SPEC.	DRAWN	ELEC. DES. APP. MECH. DES. APP.
		FINISH & SPEC. NO.	###	G.T.O.
			CHECKED	FINAL APPROVAL
		S135 NICKEL PLATE		TE 148 D

ISSUE	ITEM	CHANGED FROM	DATE	CN. NO.	DRAFTS	CHECKER	ENG. APP.
D		SEE OBS NOTE	7.21.67	18397	W/W	J.W.	RH
C		DELE. REF.; ADD. S401 Nos.; FINISH WAS S105 CAD. PLATE	5.2.66	16187	H/A	J.P.	J.C.
B	1	1.312 was 1.375	6/26/55	2	J.W.	J.W.	J.W.
A	1	1.375 was 1.250	4/4/55	1	J.W.	J.W.	G.T.O.

TOLERANCES		SCALE
ALL OTHERS	DEC. DIM. $\pm .005$ FRAC. DIM. $\pm$ ANGULAR DIM. $\pm$	DRILL, PUNCH, COMMERCIAL STOCK SIZES AND MANUFACTURERS TOLERANCES ARE NOT INCLUDED.