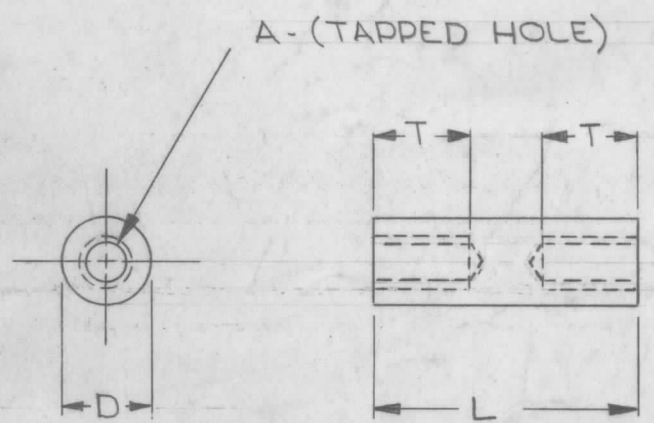


TE



TMC NO.	L	D	A	MFRS. PART NO.
TE-135-1	1/4	1/4	6 - 32	8152-B-0632-4
TE-135-2	3/8	1/4	6 - 32	8154-B-0632-4
TE-135-3	1/2	1/4	6 - 32	8156-B-0632-4
TE-135-4	3/4	1/4	6 - 32	8159-B-0632-4
TE-135-5	1	1/4	6 - 32	8161-B-0632-4
TE-135-6	1/4	1/4	8 - 32	8152-B-0832-4
TE-135-7	3/8	1/4	8 - 32	8154-B-0832-4
TE-135-8	1/2	1/4	8 - 32	8156-B-0832-4
TE-135-9	3/4	1/4	8 - 32	8159-B-0832-4
TE-135-10	1	1/4	8 - 32	8161-B-0832-4
TE-135-11	1/4	3/8	6 - 32	8510-B-0632-4
TE-135-12	3/8	3/8	6 - 32	8512-B-0632-4
TE-135-13	1/2	3/8	6 - 32	8514-B-0632-4
TE-135-14	3/4	3/8	6 - 32	8517-B-0632-4
TE-135-15	1	3/8	6 - 32	8519-B-0632-4
TE-135-16	1/4	3/8	8 - 32	8510-B-0832-4
TE-135-17	3/8	3/8	8 - 32	8512-B-0832-4
TE-135-18	1/2	3/8	8 - 32	8514-B-0832-4
TE-135-19	3/4	3/8	8 - 32	8517-B-0832-4
TE-135-20	1	3/8	8 - 32	8519-B-0832-4
TE-135-21	1-3/8	1/4	6 - 32	8167-B-0632-4
TE-135-22	5/32	1/4	6 - 32	8150-10-B-0632-4
TE-135-23	1/4	3/16	6 - 32	8077-B-0632-4
TE-135-24	1-1/2	1/4	6 - 32	8169-B-0632-4
TE-135-25	15/16	1/4	6-32	8160-60-B-0632-4
TE-135-26	1-1/4	1/4	6-32	8165-B-0632-4
TE-135-27	1-3/4	1/4	6-32	8172-B-0632-4
TE-135-28	5/8	1/4	6-32	8158-B-0632-4
TE-135-29	1-3/16	1/4	6-32	8164-B-0632-4
TE-135-30	1-7/8	1/4	6-32	

SPACER LENGTH	THREAD DEPTH CHART (SCREW) DIMENSION T (ENGAGEMENT)	
	FOR 6-32 THD.	FOR 8-32 THD.
UP TO AND INCL. 1"	TAP THRU	TAP THRU
OVER 1"	3/8 MIN.	7/16 MIN.

M	TE135-30 Added	11-27-69	21732	RU	RU	RU	
L	ADDED TE135-29	11/16/67	18608	EFM	EFM	EFM	
K	ADDED - 28	1-3-67	17582	RME	CB	CB	
J	3 PICTORIAL CLARIFIED 2 DELETED HERMAN SMITH CO REF 1 ADDED THD DEPTH CHART MFRS PART NO COLUMN, AMATOM REF	7-8-63	9335	NO	NO	NO	
H	TE-135-27 ADDED	6-5-63	9181	RU	RU	RU	
G	TE-135-26-ADDED	11-27-62	7723	RU	RU	RU	
F	FINISH & SPEC. WAS CADMIUM PLATE - S105	10-31-62	7576	RU	RU	RU	
E	TE-135-25 ADDED	9/6/60	2903	RU	RU	RU	
D	REDRAWN - WAS 1 SIZE TE-135-24 ADDED	8/9/57	4	RU	RU	RU	
ISSUE	ITEM	CHANGED FROM	DATE	CH. NO.	DRAFTS	CHECKER	ENG. APP.

REF. AMATOM ELECT. HARDWARE

REQ. ITEM	PART NO.	DESCRIPTION	SYMBOL
		THE TECHNICAL MATERIEL CORP. MAMARONECK, NEW YORK	
STOCK SIZE			
BRASS		STAND - OFF, SPACER	
MATERIAL			
TYPE & TEMPER		HEAT TREAT. SPEC.	DRAWN
NICKEL PLATE S-135		CHECKED	FINAL APPROVAL
FINISH & SPEC. NO.		ELEC. DES. APP.	MECH. DES. APP.

TOLERANCES		SCALE:
DIM. ±		MAXIMUM ALLOWABLE TOLERANCES HAVE BEEN DETERMINED AND ANY DEVIATIONS WILL BE CAUSE FOR REJECTION. REMOVE ALL BURRS AND SHARP EDGES
DIM. ±		
AR DIM. ±		

REQ. PER UNIT	MODEL	PROJECT NO.	ASS'Y. NO.	DATE	USED ON

TE - 135

M