

THE CONTENTS OF THIS DRAWING ARE THE EXCLUSIVE PROPERTY OF THE TECHNICAL MATERIEL CORP. ITS UNAUTHORIZED USE FOR REPRODUCTION IN WHOLE OR IN PART IS STRICTLY FORBIDDEN.

REQ. PER UNIT

6

USED ON

MODEL

GPT 200K

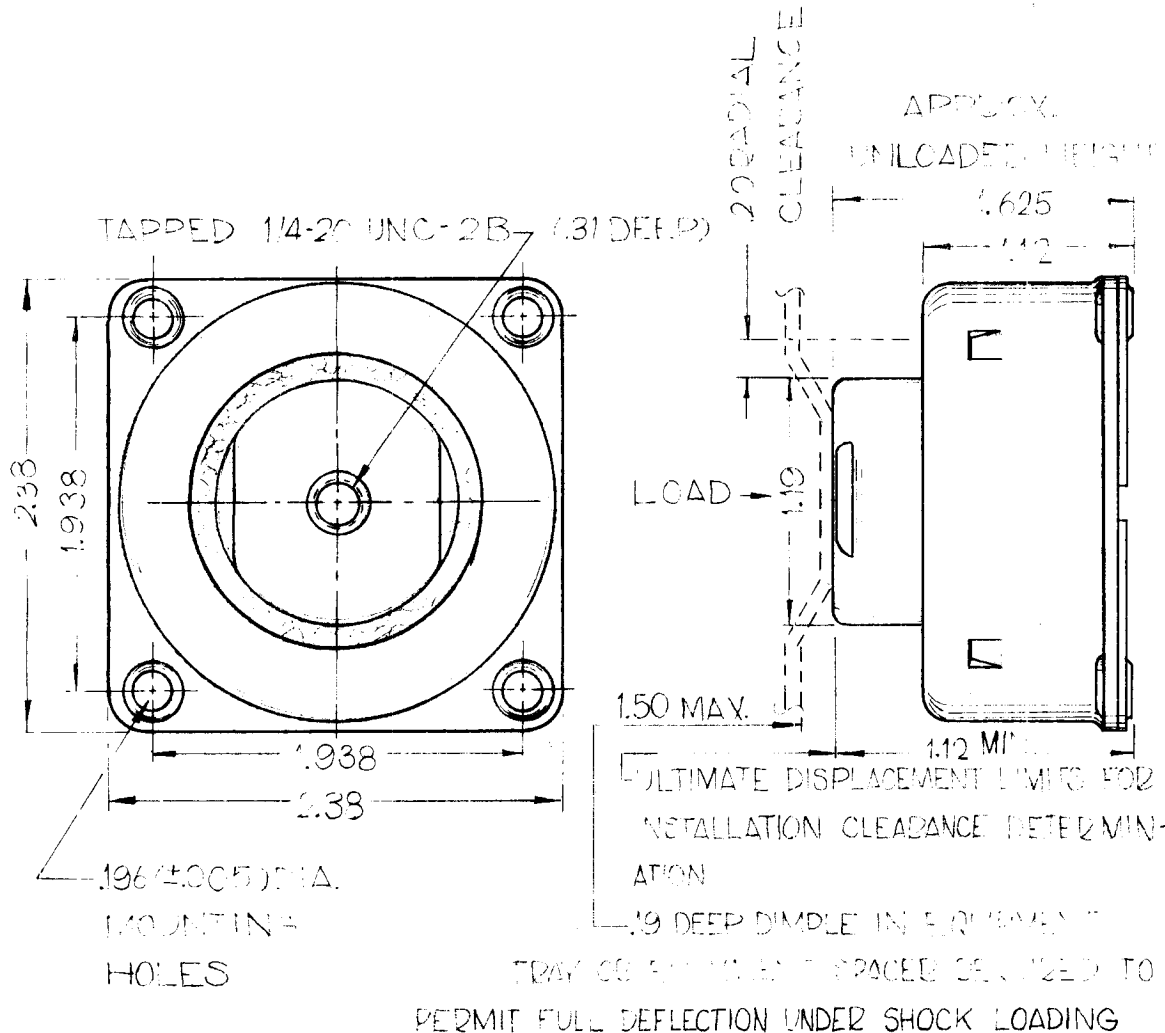
ASS'Y. NO.

AX-393

DATE

4-23-64

SH-115



TMC NO.	MFG NO.	LOAD DATA
SH 115-1	1202-1	2 1/2 TO 3
SH 115-2	1202-2	5 1/2 TO 6 1/2
SH 115-3	1202-3	7 TO 8
SH 115-4	1202-4 *	9 TO 10

* ADD SUFFICIENT TO MODEL NUMBER (E.G. 1202-1A) FOR MOUNT WITH 3/16" DIA. B TOP CAP AND ATTACHMENT ETC EQUIPMENT TRAY WITH 1/8" DIMPLES. WRENCH FLATS PROVIDED ON HIGH STUD ONLY. HOLE END DRILLING PROVIDED ON LOW STUD.

FINISH:

ALUMINUM PARTS ARE SATIN FINISHED (ALKALINE STORIED); BRONZE OR ANODIZED ON SPECIAL ORDER. STAINLESS STEEL PARTS ARE PASSELATED, AND BRASS ELEMENTS ARE NICKLE PLATED

REQ. ITEM	PART NO.	DESCRIPTION	SYMBOL
		THE TECHNICAL MATERIEL CORP. MAMARONECK, NEW YORK	
		STOCK SIZE	
		MATERIAL	
		TYPE & TEMPER	
		HEAT TREAT. SPEC.	
		FINISH & SPEC. NO.	
		ELEC. DES. APP.	
		MECH. DES. APP.	

○ ORIGINAL RELEASE FOR PRODUCTION	5-13-64	○ A.M.				
SYM	DESCRIPTION	DATE	CH. NO.	DRAFTS	CHECKER	ENG. APP.
UNLESS OTHERWISE SPECIFIED DIMENSIONS ARE IN INCHES AND INCLUDE CHEMICALLY APPLIED OR PLATED FINISHES		SCALE				
DECIMALS .X ± .05 .XX ± .01 .XXX ± .005	TOLERANCES	FRACTIONS ± 1/64 ANGLES ± 0° 30'	CODE C	S 401-152		