

DATE 5/8/57

SH. 1 OF 2

COMPILED BY

P.L.K.

TMC

SPECIFICATION NO. S-332

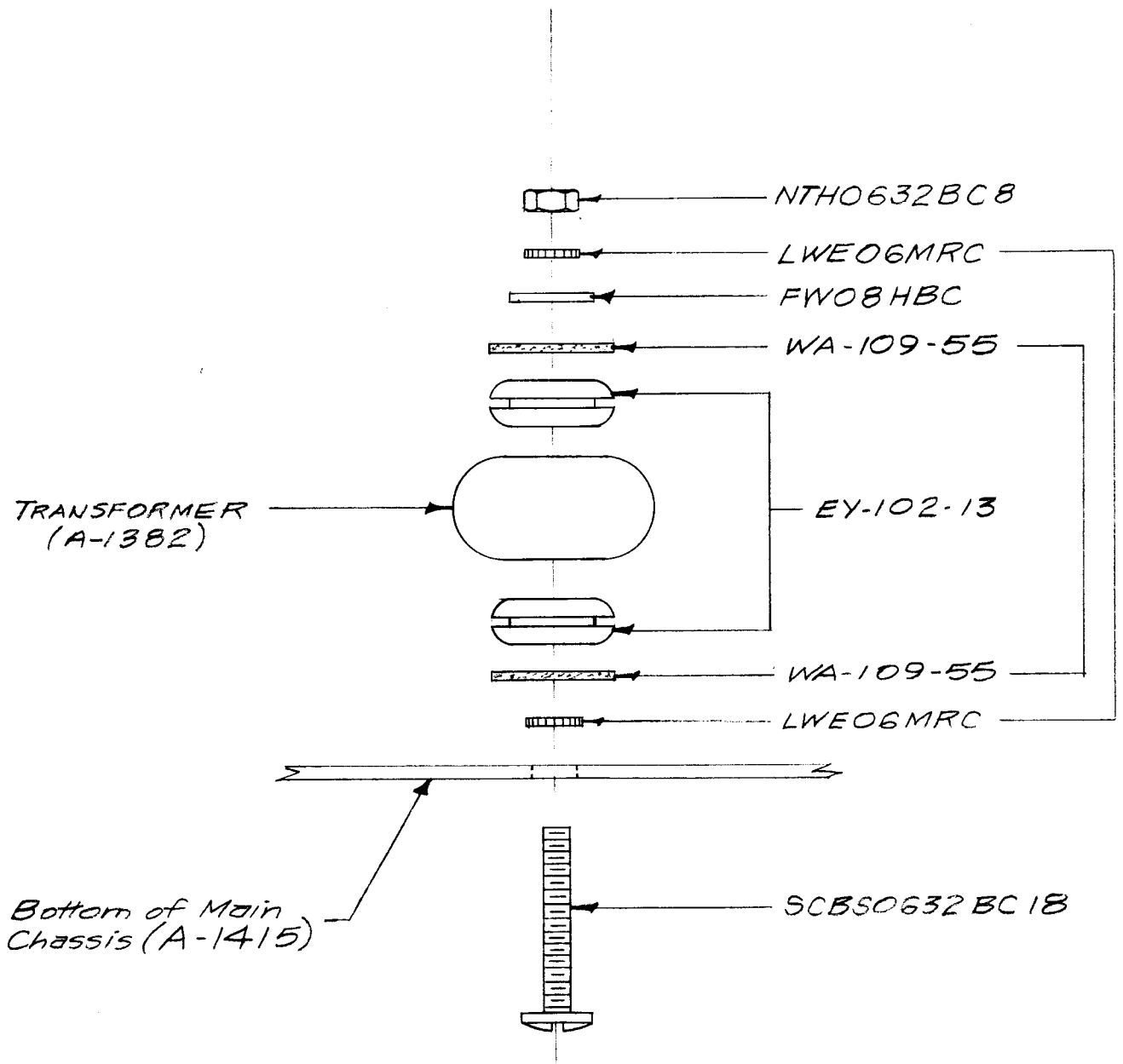
TITLE:

MECHANICAL AND WIRING ASSEMBLY DATA

JOB GSB-1
MARK II

APPROVED P.L.K. A.J.J.

T2 MOUNTING (17 KC OSC.)



NOTE- 1. Grommets (EY-102-13) must be centered.
 2. Nut must be tightened until Fiber Washers (WA-109-55) are flush with Transformer (A-1382)

DATE 5/8/57
 SH. 2 OF 2

TMC SPECIFICATION NO. S-332

COMPILED BY

P.L.K.

TITLE: MECHANICAL AND WIRING ASSEMBLY DATA

JOB GSB-1
 MARK II

APPROVED

P.L.K. *A.J.S.* *A*

FILAMENT AND INTERCONNECTING LEADS

Additional interconnecting leads required in the GSB-1 which are not part of any cable assembly.

NOTE: All pairs will be twisted together.

All lengths include $\frac{1}{2}$ " stripping each end.

ITEM	PART NUMBER	COLOR	CONNECT FROM	CONNECT TO	LENGTH
1	SRIR3/5(7)22U9L	White/Brown	Pin 3, V4	Pin 3, V2	
	SRIR3/5(7)22U1L	Brown	Pin 4, V4	Pin 4, V2	
2	SRIR3/5(7)22U9L	White/Brown	Pin 3, V2	Pin 3, V1	
	SRIR3/5(7)22U1L	Brown	Pin 4, V2	Pin 4, V1	
3	SRIR3/5(7)22U9L	White/Brown	Pin 3, V1	Pin 4,5, V3	
	SRIR3/5(7)22U1L	Brown	Pin 4, V1	Pin 9, V3	
4	SRIR3/5(7)22U9L	White/Brown	R43	Pin 3, V10	
	SRIR3/5(7)22U1L	Brown	R42	Pin 4, V10	
5	SRIR3/5(7)22U9L	White/Brown	Pin 3, V10	Pin 4,5, V9	
	SRIR3/5(7)22U1L	Brown	Pin 4, V10	Pin 9, V9	
6	SRIR3/5(7)22U9L	White/Brown	Pin 4,5, V9	Pin 3, V6	
	SRIR3/5(7)22U1L	Brown	Pin 9, V9	Pin 4, V6	
7	SRIR3/5(7)22U9L	White/Brown	Pin 3, V6	Pin 3, V5	
	SRIR3/5(7)22U1L	Brown	Pin 4, V6	Pin 4, V5	
8	SRIR3/5(7)22U22	Red	R32	R2	
9	SRIR3/5(7)22U95	White/Green	R41	S3A	
10	SRIR3/5(7)22U22	Red	C36B	R6	
11	SRIR3/5(7)22U66	Blue	C36C	Pin 6, V10	

C36 Wiring

Before wiring C36 in unit, check location of capacity values against schematic CK-341 and wire accordingly.

DATE 3/4/58
SH. 3 OF 3
COMPILED BY
P.L.K.

TMC SPECIFICATION NO. S 332

TITLE: MECHANICAL AND WIRING ASSEMBLY DATA

JOB

APPROVED P.L.K.

MODIFICATIONS GSB-1

TO CURE COMPLAINT OF EXCESSIVE NOISE AND OTHER TROUBLES IN THE OUTPUT OF THE GSB-1

- Step: #1 Remove R₄₁ (5.6K) from SSB/AM switch S3A.
- #2 Remove shield lead from tie point of R₄₁.
- #3 Connect shield lead on terminal vacated by R₄₁ on switch S3A.
- #4 Remove tie point with R₄₁ from filter Z1 mounting screw.
- #5 Relocate tie point on Z1 mounting screw diagonally opposite its original position.
- #6 Remove shield lead from pin 7 of V5 and connect it to tie point with R₄₁.
- #7 Connect other end of R₄₁ to pin 7 of V5.

