

TMC SPECIFICATION

NO. S 1255

REV:

0

COMPILED:

SR

CHECKED:

[Signature]

APPD:

[Signature]

SHEET

OF

TITLE:

jb/ 6/30/69

KIT 360

TMC SPECIFICATION

NO. S 1255

REV:

COMPILED: SR

CHECKED: *LR*

APPD: *QZ*

SHEET 1 OF 4

TITLE:

jb/ 6/30/69

A. PURPOSE OF MODIFICATION:

1. To improve fan operation

B. TOOLS REQUIRED:

1. Blade Screw Driver
2. Soldering Iron
3. Phillips Screw Driver
4. Long Nose Pliers
5. Diagonal Cutting Pliers
6. Heat Gun or Soldering Iron

C. PARTS SUPPLIED:

<u>ITEM</u>	<u>QTY.</u>	<u>PART NO.</u>	<u>DESCRIPTION</u>
1.	1	EY102-20	Rubber Grommet
2.	1	3/8 Drill Bit	
3.	1 Foot	PX-830-16-1	Shrink Tubing
4.	1 Foot	PX-100-1-.208	Tubing
5.	1 Foot	MWC-20-7U2	Wire
6.	1 Foot	MWC-20-7UO	Wire
7.	1	MS5137D	Top Cover
8.	1oz can	Tenneco Chem.#495	Oil (High Temp)
9.	1	Q/C NO. 8383	Applicator

D. PROCEDURE: CAUTION BEFORE ANY MODIFICATIONS ARE MADE REMOVE AC POWER.

1. Remove top cabinet cover and top inner cover.
2. Remove both PA output tubes.
3. Unsolder and remove both AC input leads from left fan, viewed from front.
4. Remove both fans from inside of chassis, also remove both fan shields.
5. Place fans on suitable work area. Unsolder and remove both leads from right fan terminals, (viewed from front). Slip a ½ inch piece of shrink tubing (Item #3) over each lead. Now resolder leads to fan terminals. Slip shrink tubing over terminal and lead, then SHRINK. Ref. Pictorial #1.

TMC SPECIFICATION

NO. S 1255

REV:

COMPILED: SR

CHECKED:

APPD:

SHEET 2 OF 4

TITLE:

6. Place both fans down flat on bench with air flow arrows pointing up. Using Items No. 8 and 9, (oil and applicator) apply a few drops of oil to each fan.
NOTE: This can be done by inserting applicator into oil port, located in the center of rotating hub.
7. With Item #2 - 3/8 inch Drill Bit, locate and drill a hole 5/8 inch down from and in line with screw located at top right corner of rear panel (viewed from back).
Ref. Pictorial #2
8. Install Item #1 (Rubber Grommet) in hole.
9. Using Items #5 and 6 (Red and Black Wire) splice and solder one end of each lead to leads previously disconnected from fan in step #3.
10. Cut two 1 inch pieces of Shrink Tubing (Item #3), slip Tubing over each lead until it covers splice, then SHRINK. Ref. Pictorial #3.
11. Cut a 5 inch piece of Tubing (Item #4) and slip over both Red and Black leads. Pull down until tubing touches chassis. Ref. Pictorial #4
12. Dress Red and Black leads thru Rubber Grommet.
13. Mount both fans, including shields, previously removed in step #4, to OUTSIDE of rear panel, using existing mounting hardware. Make certain air flow arrow is pointed outward. Ref. Pictorial #2
NOTE: Mount shields on outside of fans.
14. Dress Red and Black leads up to left fan terminals, (viewed from front.) Cut off excess, strip and tin each lead.
15. Unsolder and remove both leads from left fan terminals viewed from front.

TMC SPECIFICATION

NO. S 1255

REV:

COMPILED:

SR

CHECKED:

APPD:

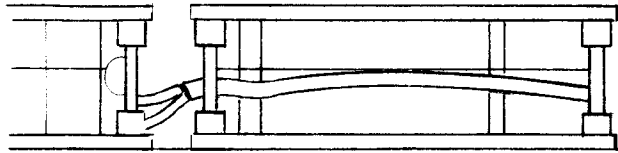
SHEET

3

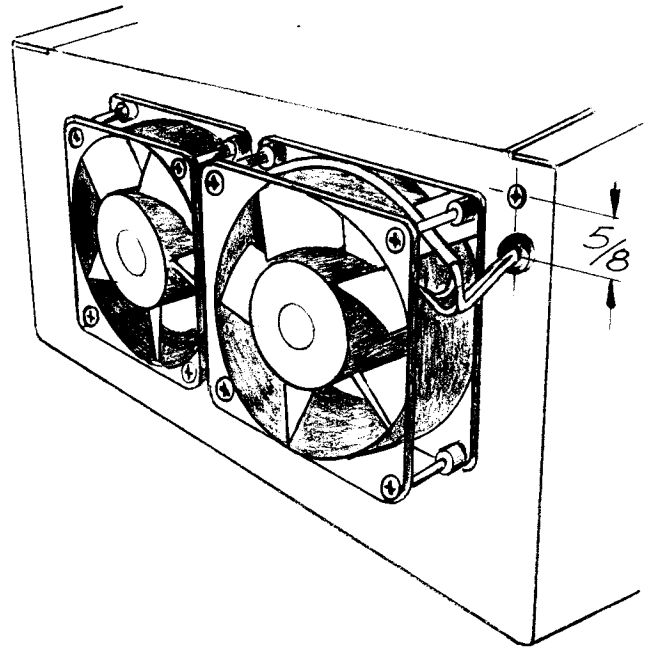
OF 4

TITLE:

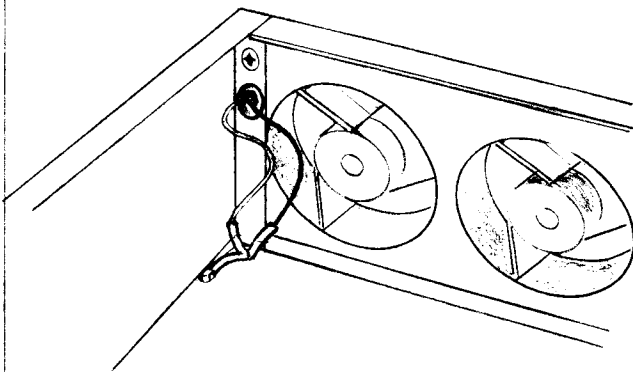
16. Take the Red lead previously stripped and tinned in step #13 and place it next to one of the leads removed from fan. Cut a $\frac{1}{2}$ inch piece of Shrink Tubing (Item #3) and slip over both leads. Now solder both leads to one of the left fan terminals. Now slip Shrink Tubing over fan terminal and shrink with soldering iron. Refer to Sketch #1
17. Take Black lead and other lead previously removed from left fan, and repeat procedure as in step #15.
18. Re-install both PA output tubes.
19. Install modified top cover (Item #7).
20. Install top cabinet cover.



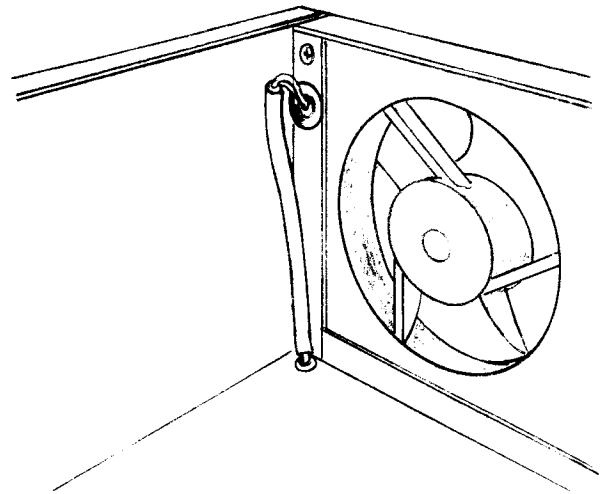
1



2



3



4

