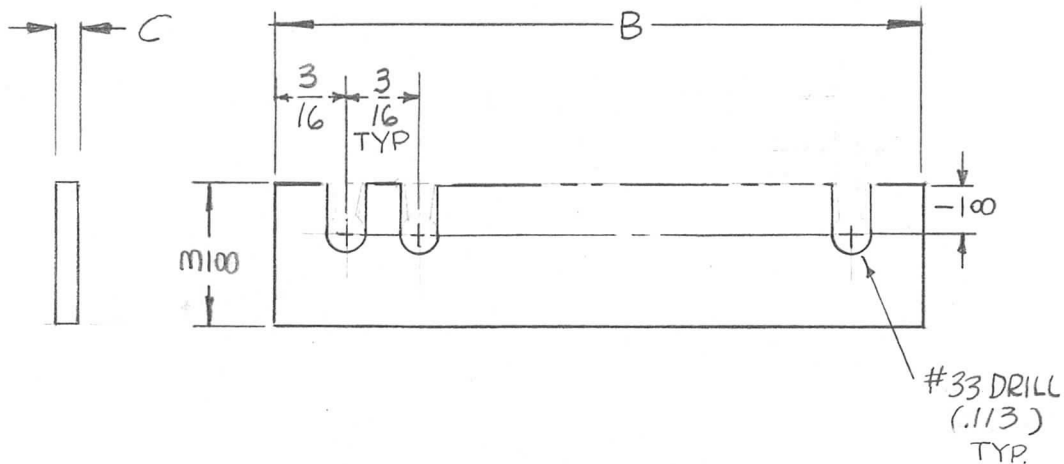


STANDARD DWG

REQ. PER UNIT	USED ON			PX 996	A
	MODEL	ASS'Y. NO.	DATE		
1	TFP-2.5K		8-25-66		



TMC P/N	# OF SLOTS	B	C	USED ON QTY
PX 996-1	8	1-11/16	1/8	2 TFP 2.5K
PX 996-2	9	1-7/8	1/8	1 TFP 2.5K
PX 996-3	11	2-1/4	1/8	2 TFP 2.5K
PX 996-4	12	2-7/16	1/8	1 TFP 2.5K
PX 996-5	14	2-13/16	1/8	2 TFP 2.5K
PX 996-6	15	3	1/8	6 TFP 1K
PX 996-7	16	3 3/16	1/8	6 TFP 1K

SYM	DESCRIPTION	DATE	CH. NO.	DRAFTS	CHECKER	ENG. APP.	REQ. ITEM	PART NO.	F. BUDETTI DESCRIPTION	SYMBOL	
A	ADD PX 996-7	4/15/71	20813	GE	W	P.E.B.			THE TECHNICAL MATERIEL CORP. MAMARONECK, NEW YORK STOCK SIZE TEFLON MATERIAL TFE TYPE & TEMPER NATURAL FINISH & SPEC. NO.	SPACER, COIL DRAWN CHECKED FINAL APPROVAL PX 996 A	
Ø	ORIGINAL RELEASE FOR PRODUCTION	5/22/69		CU.							
X	EXP. RELEASE	8-25-66	X								
UNLESS OTHERWISE SPECIFIED DIMENSIONS ARE IN INCHES AND INCLUDE CHEMICALLY APPLIED OR PLATED FINISHES		SCALE									
DECIMALS .X ± .05 .XX ± .01 .XXX ± .005		FRACTIONS ± 1/64 ANGLES ± 0° 30'		CODE		S401-451 S401- S401-					
TOLERANCES		A									