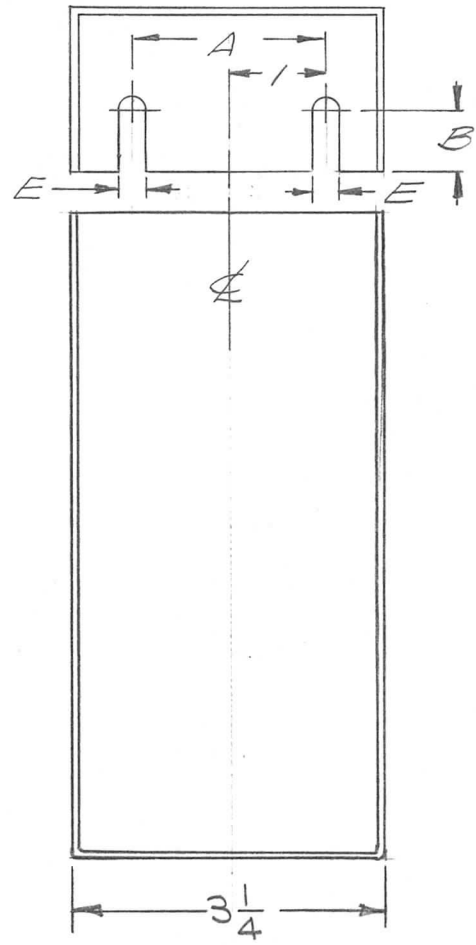
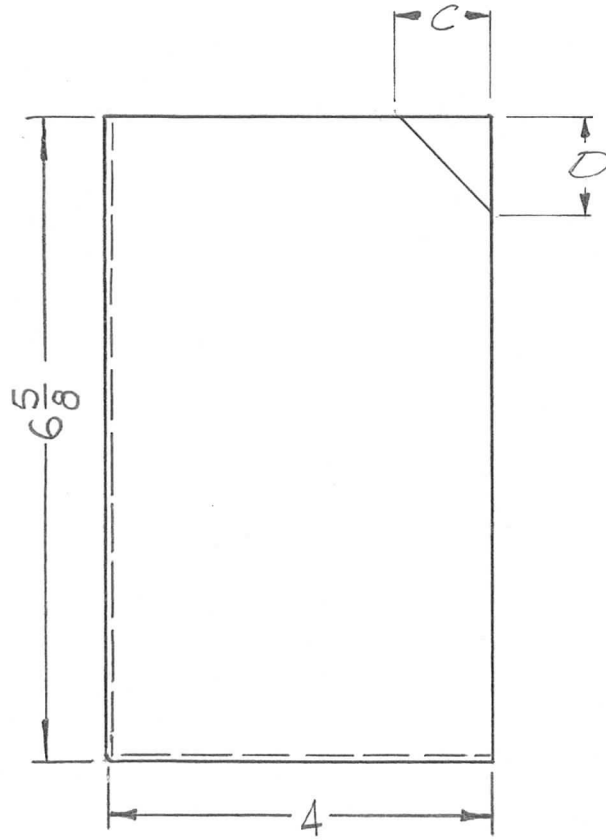


TMC PART NO.	A	B	C	D	E	REQ. PER UNIT	USED ON			PX 938	A <sup>x</sup>
							MODEL	ASS'Y. NO.	DATE		
PX 938	NONE	NONE	NONE	NONE	NONE	3	GPT-40K		5-10-65		
PX 938-2	2	5/8	1"	1"	1/4						



REQ.	ITEM	PART NO.	F. BUDETTI	DESCRIPTION	SYMBOL
		3 LAYERS		THE TECHNICAL MATERIEL CORP. MAMARONECK, NEW YORK	
		STOCK SIZE			
		FIBERGLASS		COVER, ELECT. PROTECT	
		MATERIAL			
			SRG	QCIS	1/11/65 8/17/65
		TYPE & TEMPER		DRAWN	CHECKED
		HEAT TREAT. SPEC.			FINAL APPROVAL
		SI15 SMOOTH GREY ENAM.			PX 938 A
		FINISH & SPEC. NO.		ELEC. DES. APP.	MECH. DES. APP.

UNLESS OTHERWISE SPECIFIED DIMENSIONS ARE IN INCHES AND INCLUDE CHEMICALLY APPLIED OR PLATED FINISHES		SCALE NTS
DECIMALS .X ± .05 .XX ± .01 .XXX ± .005	TOLERANCES	FRACTIONS ± 1/64 ANGLES ± 0° 30'
CODE A		