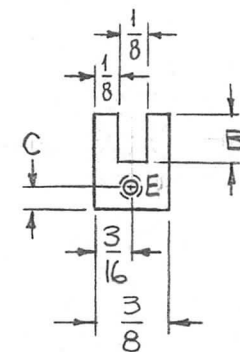
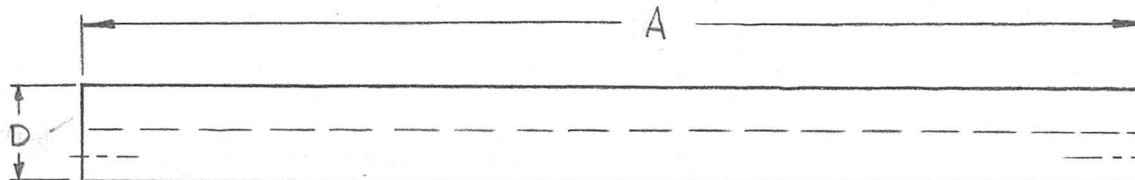


TMC P/N	A	B	C	D	E	REQ. PER UNIT	USED ON			
							MODEL	ASS'Y. NO.	DATE	
PX 906 -1	5-1/2	1/8	3/16	9/16	ITEM-1	4	RFTA-1		12-10-64	PX906 ①
PX 906 -2	3-3/4	1/8	3/16	1/2	ITEM-1	3	RFTA-1			
PX 906-3	6	1/8	3/16	9/16	ITEM-1	4	TLAA-2.5K			
PX 906-4	8	1/8	3/16	9/16	ITEM-1	4	ATSA-3			
PX 906-5	5	1/8	3/16	9/16	IT. 1	3	ATSA-3			



OPPOSITE SIDE IDENTICAL

①	ADD - 5	6-1-73	21082	GE	EP	EP					
C	-4, A WAS 8 1/4	5/11/73	21075	CS	CL	CL					
B	ADDED - 4	5/8/73	21071	CS	EP	EP	2	1	NT 139SC0620	INSERT, SCREW THREAD	E
A	MATERIAL WAS G11-MELAMINE	8-16-66	16762	RME			REQ. ITEM	PART NO.	F. BUDETTI	DESCRIPTION	SYMBOL
Ø	ORIGINAL RELEASE FOR PRODUCTION	6/14/66	Ø	C.V.			3/8 THICK		THE TECHNICAL MATERIEL CORP. MAMARONECK, NEW YORK		
X1	ON CHART PX 906-3 ADDED	6-9-66	X1	G.D.L.			STOCK SIZE				
X	EXP. RELEASE	12-10-64	X	SRG			EPOXY		SUPPORT, SPACER, TUNING COIL		
SYM	DESCRIPTION	DATE	CH. NO.	DRAFTS	CHECKER	ENG. APP.	MATERIAL				
UNLESS OTHERWISE SPECIFIED DIMENSIONS ARE IN INCHES AND INCLUDE CHEMICALLY APPLIED OR PLATED FINISHES		SCALE		1:1			G11		SRG		
DECIMALS .X ± .05 .XX ± .01 .XXX ± .005		FRACTIONS ± 1/64 ANGLES ± 0° 30'		CODE A			TYPE & TEMPER	HEAT TREAT. SPEC.	DRAWN	CHECKED	FINAL APPROVAL
TOLERANCES											PX906 ①
							FINISH & SPEC. NO.	ELEC. DES. APP.	MECH. DES. APP.		