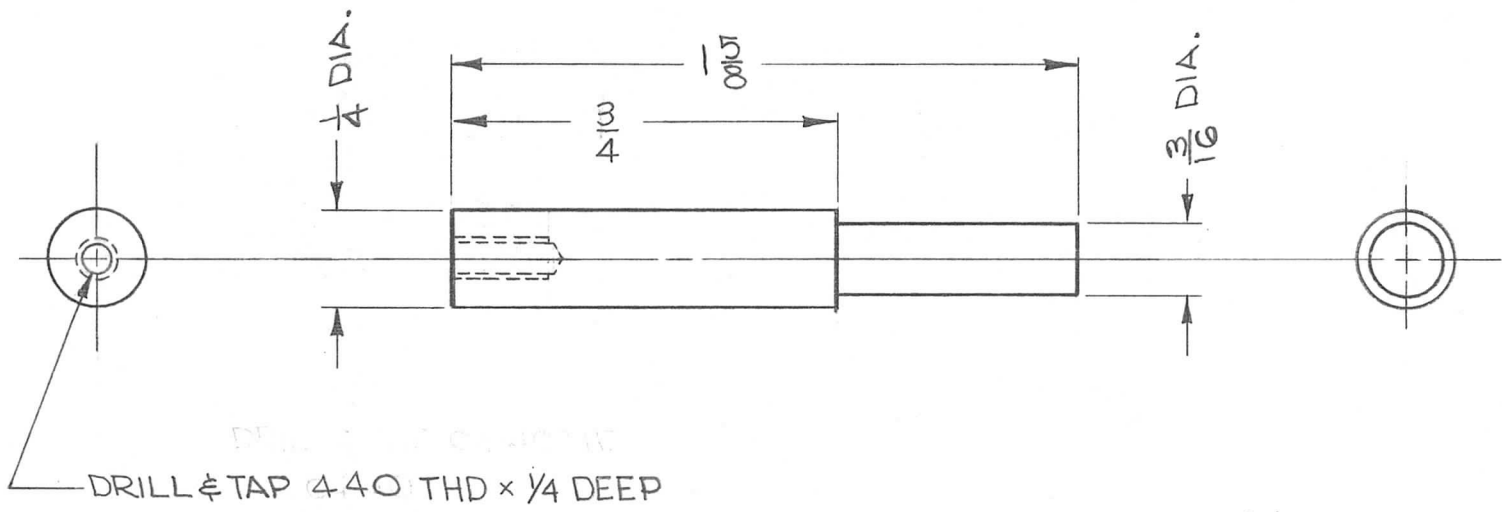


THE CONTENTS OF THIS DRAWING ARE THE EXCLUSIVE PROPERTY OF THE TECHNICAL MATERIEL CORP. ITS UNAUTHORIZED USE FOR REPRODUCTION IN WHOLE OR IN PART IS STRICTLY FORBIDDEN.

REQ. PER UNIT	USED ON		
	MODEL	ASS'Y. NO.	DATE
1	TTR-10	A-2775	5-25-63

PX-825



							REQ. ITEM	PART NO.	R. KOHN	DESCRIPTION	SYMBOL
							1/4 DIA. ROD			THE TECHNICAL MATERIEL CORP. MAMARONECK, NEW YORK	
							STOCK SIZE			HANDLE, EXTENSION CIRCUIT BREAKER	
							50% SYNTHANE GRADE L-YB				
							MATERIAL				
SYM	DESCRIPTION	DATE	CH. NO.	DRAFTS	CHECKER	ENG. APP.			<i>R. Kohn</i> 5-25-63	<i>J. Jordan</i> 5/31/63	<i>BP</i>
UNLESS OTHERWISE SPECIFIED DIMENSIONS ARE IN INCHES AND INCLUDE CHEMICALLY APPLIED OR PLATED FINISHES		SCALE									
		2:1									
DECIMALS .X ± .05 .XX ± .01 .XXX ± .005	TOLERANCES	FRACTIONS ± 1/64 ANGLES ± 0° 30'	CODE A								
							TYPE & TEMPER	HEAT TREAT. SPEC.	DRAWN	CHECKED	FINAL APPROVAL
							SEMI-GLOSS - BLACK		R. KOHN 5/31/63	W. JORDAN	PX-825
							FINISH & SPEC. NO.		ELEC. DES. APP.	MECH. DES. APP.	