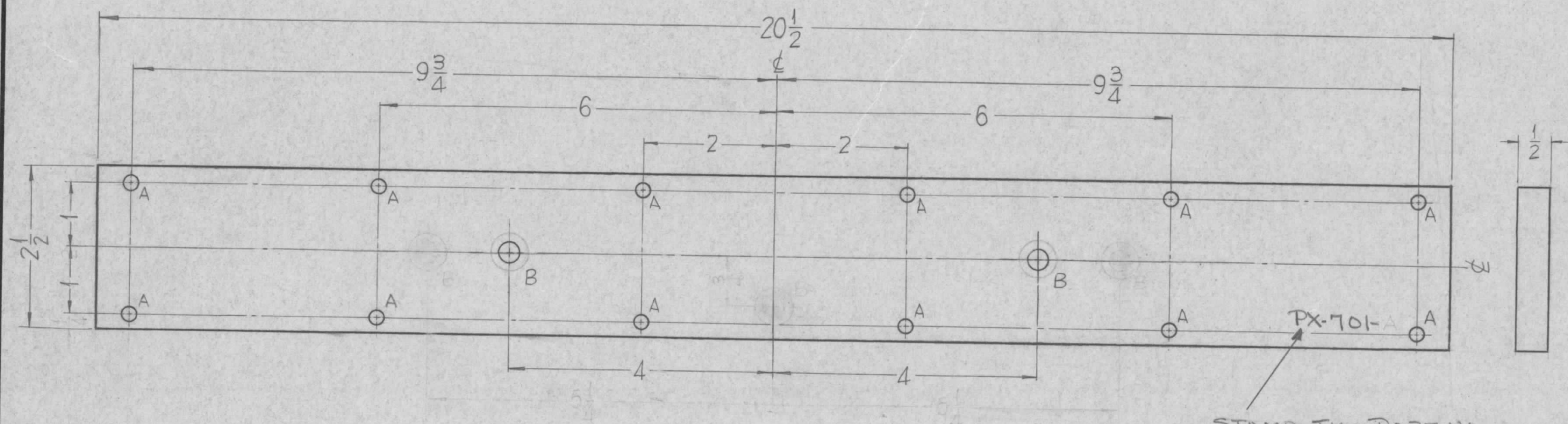


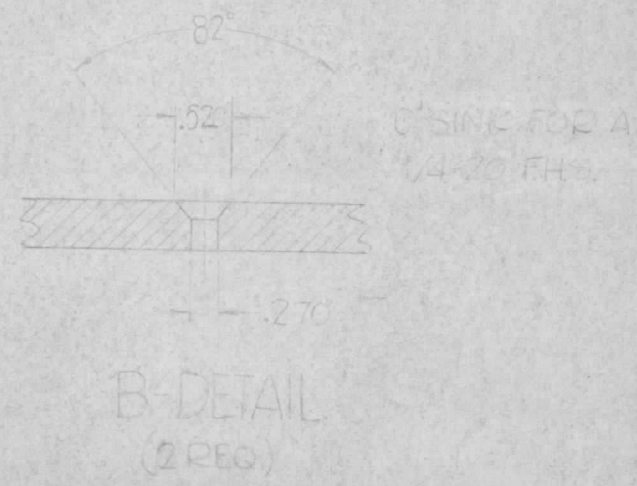
PX-701

| REVISIONS | | | | | | |
|-----------|---|--------|------------|-------|------|------|
| SYM | DESCRIPTION | DATE | E.M.N. NO. | DRAFT | CHKD | APPD |
| A | "A" HOLES WERE $1\frac{3}{64}$ DIA. | 8-2-63 | 9700 | AK | JW | LB |
| B | (B) HOLES WERE $1/4$ -20 C'SINK; STAMPING UPDATED | 2-1-65 | 13377 | JK | JCK | JK |



HOLES:
 A ~ $7/32$ DIA. — 12 REQ.
 B ~ $9/32$ DIA. — 2 REQ.

STAMP TMC PART NO
 $1/8$ HIGH BLACK GOTHIC,
 WITH LATEST REVISION
 LETTER.



FINISHING -
 LACQUER ALL EDGES EXPOSED BY MACHINING AND CUTTING
 USING TMC FINISH S-113-FUNGUS RESISTANT VARNISH.

| | | |
|------------|---------------|------------|
| 2 | TER-5000-300U | A-3130 |
| Q'TY./UNIT | MODEL USED ON | ASS'Y. NO. |
| SCALE | CODE | |

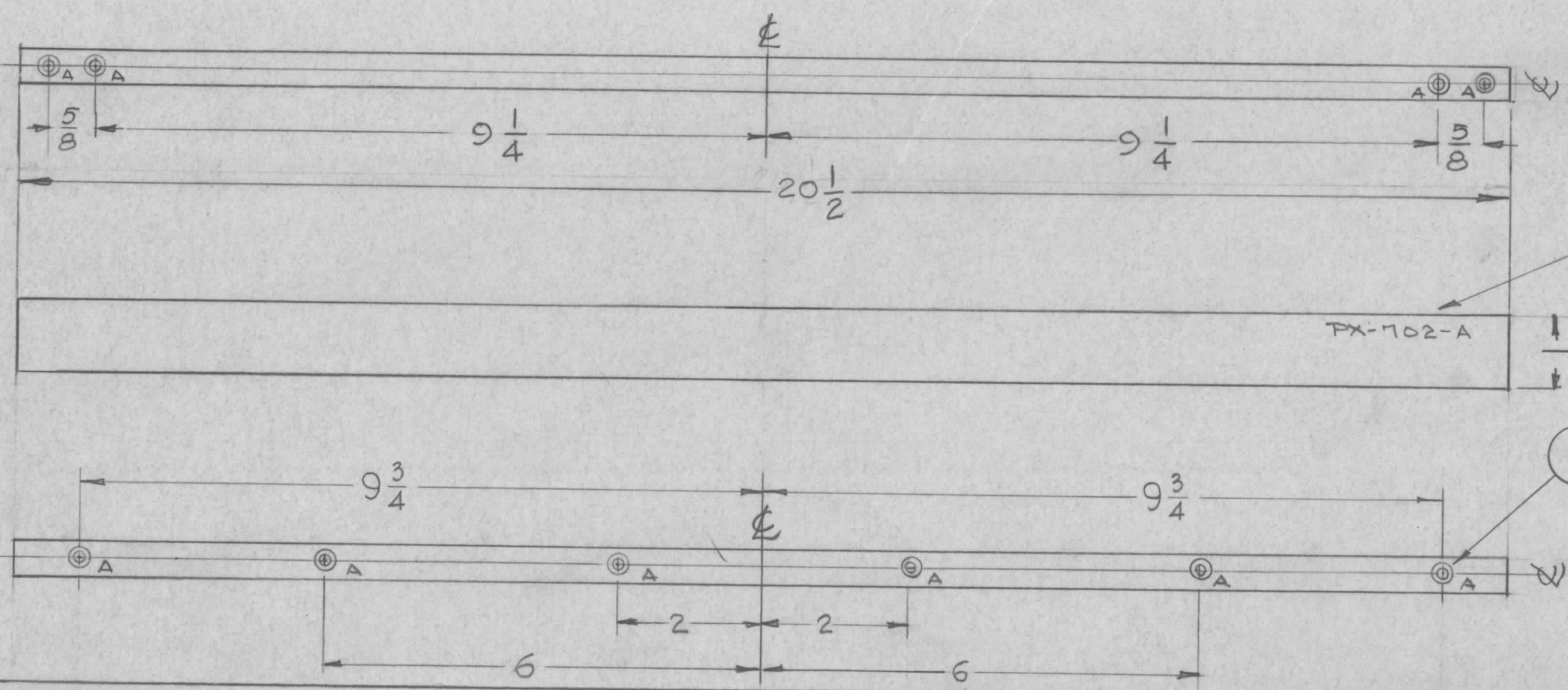
THE CONTENTS OF THIS DRAWING ARE THE EXCLUSIVE PROPERTY
 OF THE TECHNICAL MATERIEL CORP. ITS UNAUTHORIZED USE OR
 REPRODUCTION IN WHOLE OR IN PART IS STRICTLY FORBIDDEN.

| REQ'D. | ITEM | PART NUMBER | DESCRIPTION | SYMBOL |
|---|------|-------------|--|--------|
| F. BUDETTI LIST OF MATERIAL | | | | |
| MATERIAL | | | THE TECHNICAL MATERIEL CORP. MAMARONECK, NEW YORK | |
| 1/2" PHENOLIC XXXP | | | TITLE INSULATOR SUPPORT, TOP | |
| FINISH | | | DRAWN SRG DATE 3-5-63 | |
| NATURAL SEMI-GLOSS | | | CHECKED DA DATE | |
| UNLESS OTHERWISE SPECIFIED DIMENSIONS ARE IN INCHES AND INCLUDE CHEMICALLY APPLIED OR PLATED FINISHES | | | ELECT. DES. DATE | |
| DECIMALS .X ± .05 .XX ± .01 .XXX ± .005 | | | MECH. DES. DATE | |
| TOLERANCES | | | FINAL APPROVAL BSP PX-701 | |
| FRACTIONS ± 1/64 ANGLES ± 0° 30' | | | DATE | |
| | | | SHEET | |
| | | | REV. LTR. B | |

NOTES

PX-702 A

| REVISIONS | | | | | | |
|-----------|---|---------|------------|-------|------|------|
| SYM | DESCRIPTION | DATE | E.M.N. NO. | DRAFT | CHKD | APPD |
| A | PROCEDURE FOR ITEM(1) CLARIFIED. IN BUILD-UP ITEM(1) WAS NT-139-SC06-20 | 8-19-63 | 9798 | AK | 802 | WJB |



| HOLE | DESCRIPTION | REQ. |
|------|-------------|------|
| A | SEE NOTES | 10 |

STAMP TMC PART NO
1/8 HIGH BLACK GOTHIC

PROCEDURE FOR MTG. ITEM NO.1.

- 1- DRILL 1 3/4 (.203) TO .468 MIN DEPTH.
- 2- 120° C'SK .220 TO .250 DIA.
- 3- TAP .320 MIN. DEPTH USE HELI-COIL TAP NO. 3 FPB
- 4- INSTALL ITEM 1, 3/4-1-1/2 PITCH BELOW SURFACE.
- 5- BREAK OFF DRIVING TANG.

FINISHING

LACQUER ALL EDGES EXPOSED BY MACHINING AND CUTTING USING TMC FINISH S-113 FUNGUS RESISTANT VARNISH

| REQ'D. | ITEM | PART NUMBER | DESCRIPTION | SYMBOL |
|--------|------|---------------|-------------|--------|
| 10 | 1 | NT-139-SFI-15 | HELI-COIL | |

F. BUDETTI

MATERIAL: 1/2 THK. XXXP PHENOLIC

FINISH: NATURAL SEMI-GLOSS

THE TECHNICAL MATERIEL CORP. MAMARONECK, NEW YORK

TITLE: STIFFENER

UNLESS OTHERWISE SPECIFIED DIMENSIONS ARE IN INCHES AND INCLUDE CHEMICALLY APPLIED OR PLATED FINISHES

DECIMALS: .X ± .05, .XX ± .01, .XXX ± .005

FRACTIONS: ± 1/64, ANGLES: ± 0° 30'

TOLERANCES

DRAWN: G.D.L. DATE: 3-18-63

CHECKED: [Signature] DATE:

ELECT. DES: [Signature] DATE:

MECH. DES: [Signature] DATE:

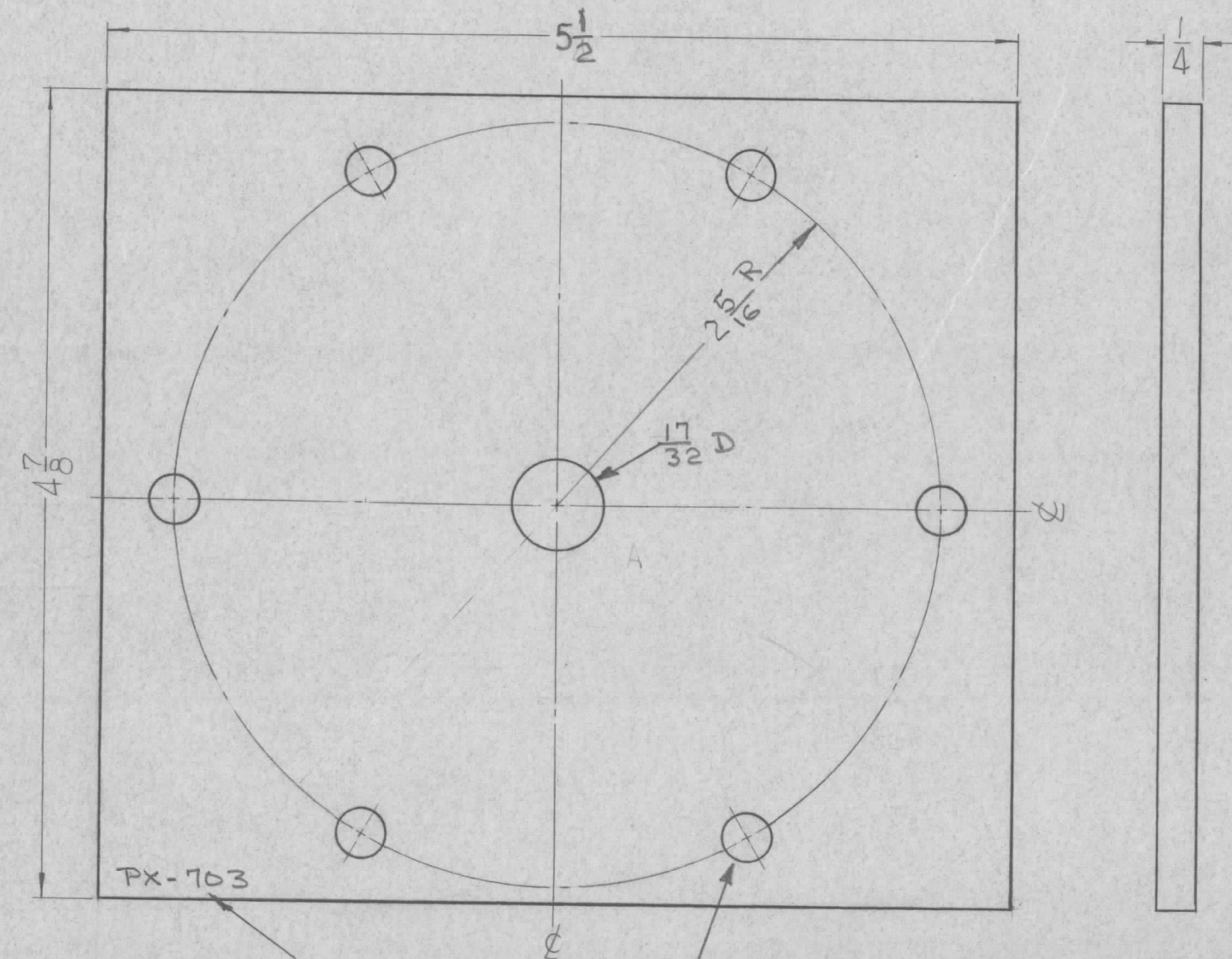
FINAL APPROVAL: [Signature] DATE:

SHEET: PX-702 A

REV. LTR. A

NOTES

THE CONTENTS OF THIS DRAWING ARE THE EXCLUSIVE PROPERTY OF THE TECHNICAL MATERIEL CORP. ITS UNAUTHORIZED USE OR REPRODUCTION IN WHOLE OR IN PART IS STRICTLY FORBIDDEN.



STAMP TMC PART NO
1/8 HIGH BLACK GOTHIC
1/8 HIGH BL

(G) 17/32 DIA HOLES EQUALLY
SPACED 60° APART ON
2 5/16 RADIUS

PX-703

REVISIONS

| SYM | DESCRIPTION | DATE | E.M.N. NO. | DRAFT | CHKD | APPD |
|-----|-------------|------|------------|-------|------|------|
|-----|-------------|------|------------|-------|------|------|



| REQ'D. | ITEM | PART NUMBER | DESCRIPTION | SYMBOL |
|--------|------|-------------|-------------|--------|
|--------|------|-------------|-------------|--------|

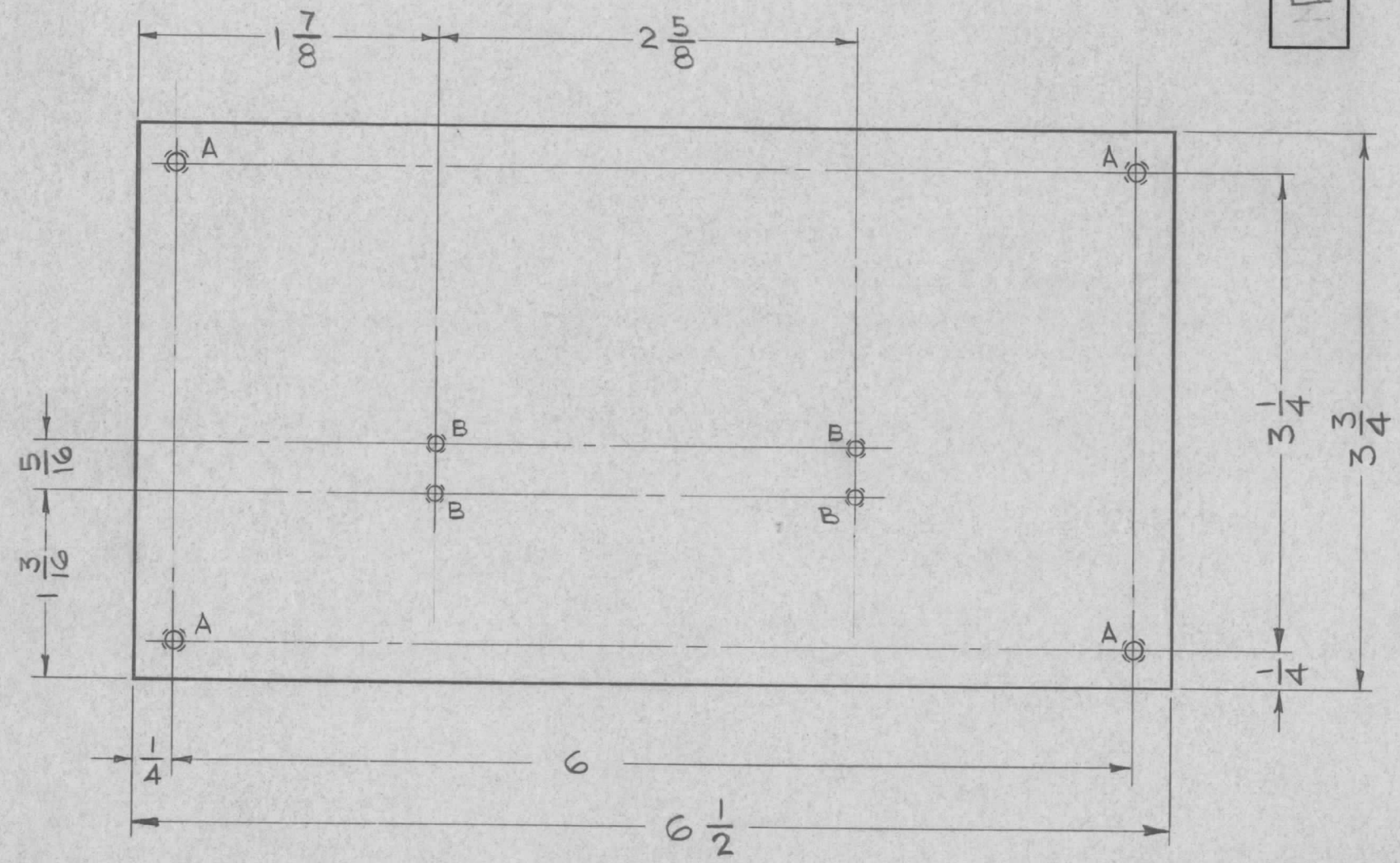
| | | | | |
|--------------------------|--|------------------------------|--|--|
| F. BUDETTI | | LIST OF MATERIAL | | |
| MATERIAL | | THE TECHNICAL MATERIEL CORP. | | |
| 1/4" G-7 SILICONE GLASS | | MAMARONECK, NEW YORK | | |
| FINISH | | TITLE | | |
| NATURAL WHITE SEMI-GLOSS | | SUPPORT BOWL | | |

| | | | | | |
|---|--|-------------|------|----------------|-----------|
| UNLESS OTHERWISE SPECIFIED DIMENSIONS ARE IN INCHES AND INCLUDE CHEMICALLY APPLIED OR PLATED FINISHES | | DRAWN | DATE | FINAL APPROVAL | DATE |
| TOLERANCES DECIMALS .X ± .05 .XX ± .01 .XXX ± .005 FRACTIONS ± 1/64 ANGLES ± 0° 30' | | CHECKED | DATE | SRG | 3-5-63 |
| | | ELECT. DES. | DATE | | |
| | | MECH. DES. | DATE | SRG | |
| | | PX-703 | | SHEET | REV. LTR. |

NOTES

THE CONTENTS OF THIS DRAWING ARE THE EXCLUSIVE PROPERTY
OF THE TECHNICAL MATERIEL CORP. ITS UNAUTHORIZED USE OR
REPRODUCTION IN WHOLE OR IN PART IS STRICTLY FORBIDDEN.

PX-705



REVISIONS

| SYM | DESCRIPTION | DATE | E.M.N. NO. | DRAFT | CHKD | APPD |
|-----|-------------|------|------------|-------|------|------|
|-----|-------------|------|------------|-------|------|------|

LEGEND

| HOLE | DESCRIPTION | REQ'D |
|------|-------------|-------|
| A | 6-32 TAP | 4 |
| B | 4-40 TAP | 4 |

REF. LD-1195

| REQ'D. | ITEM | PART NUMBER | DESCRIPTION | SYMBOL |
|---|------|-------------|---|--------------|
| STRUMER LIST OF MATERIAL | | | | |
| MATERIAL NEMA GRADE XXX 1/4 PAPER PHENOLIC | | | THE TECHNICAL MATERIEL CORP. MAMARONECK, NEW YORK | |
| FINISH BLACK, SEMI-GLOSS | | | TITLE BLOCK, MOUNTING, BARRIER STRIP | |
| UNLESS OTHERWISE SPECIFIED DIMENSIONS ARE IN INCHES AND INCLUDE CHEMICALLY APPLIED OR PLATED FINISHES | | | DRAWN T. RAMIREZ | DATE 2-28-63 |
| | | | CHECKED <i>[Signature]</i> | DATE 3-14-63 |
| DECIMALS .X ± .05 .XX ± .01 .XXX ± .005 | | | ELECT. DES. <i>[Signature]</i> | DATE 3-14-63 |
| | | | MECH. DES. <i>[Signature]</i> | DATE 3-14-63 |
| TOLERANCES ± 1/64 ANGLES ± 0° 30' | | | FINAL APPROVAL <i>[Signature]</i> | DATE |
| | | | PX-705 | |
| | | | SHEET | REV. LTR. |

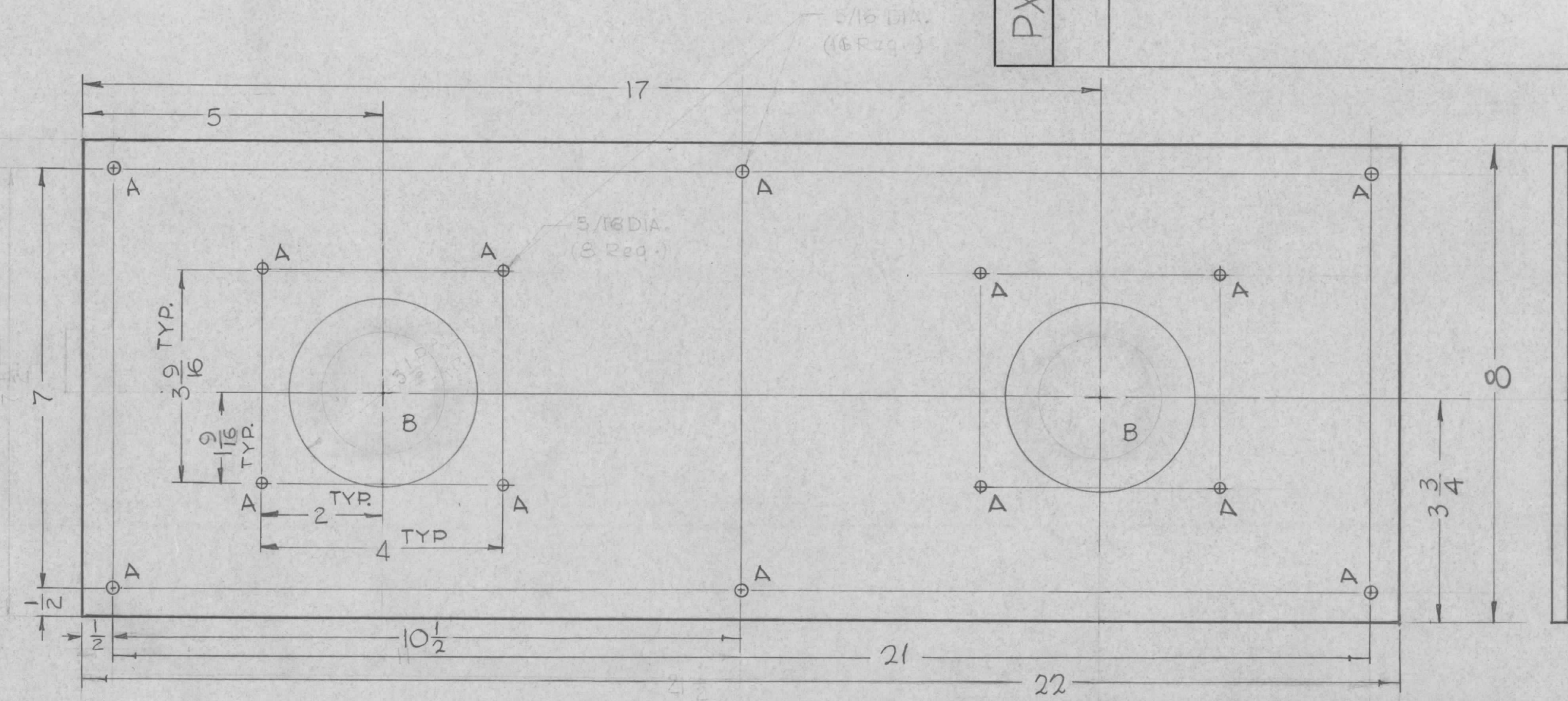
| Q'TY./UNIT | MODEL USED ON | ASS'Y. NO. |
|------------|---------------|------------|
| 1 | RAK-30A | |
| SCALE | CODE | |
| FULL | | |

THE CONTENTS OF THIS DRAWING ARE THE EXCLUSIVE PROPERTY OF THE TECHNICAL MATERIEL CORP. ITS UNAUTHORIZED USE OR REPRODUCTION IN WHOLE OR IN PART IS STRICTLY FORBIDDEN.

NOTES

HOLES
 A-3/16 DIA. REQ
 14
 B-3 1/4 DIA. 2

| SYM | DESCRIPTION | REVISIONS | | | | |
|-----|--|-----------|------------|--------|------|------|
| | | DATE | E.M.N. NO. | DRAFT | CHKD | APPD |
| X1 | DIMS. 3 1/4 DIA. WAS 3 1/8 D., 1 9/16 WAS 1 1/2, 3/16 D. WAS 5/32 D. | 2-24-66 | X1 | G.D.L. | | |
| Ø | ORIGINAL RELEASE FOR PRODUCTION | 2-28-66 | M | Jc | | |



REF: LD1203

| REQ'D. | ITEM | PART NUMBER | DESCRIPTION | SYMBOL |
|---|------|-----------------------------------|--|--------------------------------------|
| O. POSE LIST OF MATERIAL | | | | |
| MATERIAL 1/4 THK. PHENOLIC NEMA GRADE XXXP | | | THE TECHNICAL MATERIEL CORP. MAMARONECK, NEW YORK | |
| FINISH BLACK, MATTE 5113 FUNGUS RESISTANT VARNISH | | | TITLE METER PANEL | |
| UNLESS OTHERWISE SPECIFIED DIMENSIONS ARE IN INCHES AND INCLUDE CHEMICALLY APPLIED OR PLATED FINISHES | | DRAWN G.D.L. | DATE 4-2-63 | FINAL APPROVAL <i>[Signature]</i> |
| | | CHECKED <i>[Signature]</i> | DATE 6-23-65 | DATE 2/28/66 |
| | | ELECT. DES. <i>[Signature]</i> | DATE 2-28-66 | PX-706 Ø |
| | | MECH. DES. <i>[Signature]</i> | DATE 2-28-66 | |
| | | SHEET | | REV. LTR. |

| | | |
|--------------|---------------|------------|
| 1 | GPT-10KLF | AX531 |
| Q'TY./UNIT | MODEL USED ON | ASS'Y. NO. |
| SCALE 1/2 | CODE A | |

THE CONTENTS OF THIS DRAWING ARE THE EXCLUSIVE PROPERTY OF THE TECHNICAL MATERIEL CORP. ITS UNAUTHORIZED USE OR REPRODUCTION IN WHOLE OR IN PART IS STRICTLY FORBIDDEN.

DECIMALS
.X ± .05
.XX ± .01
.XXX ± .005

FRACTIONS
± 1/64
ANGLES
± 0° 30'

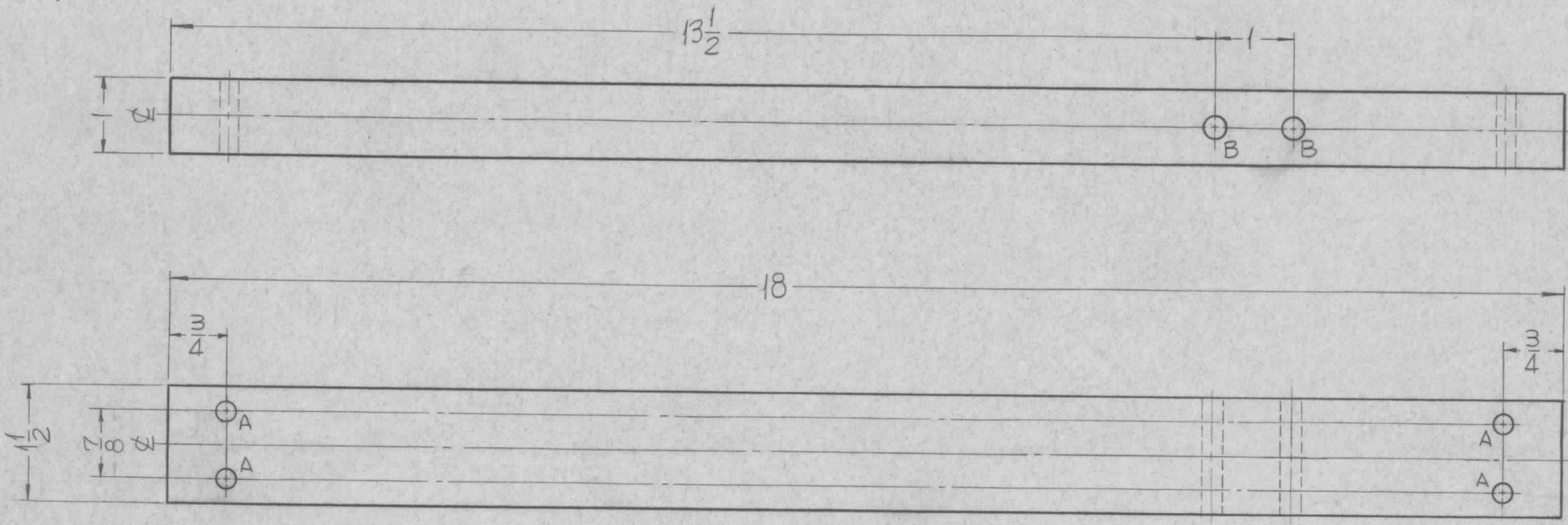
TOLERANCES

NOTES

PX-708 0

REVISIONS

| SYM | DESCRIPTION | DATE | E.M.N. NO. | DRAFT | CHKD | APPD |
|-----|---------------------------------|---------|------------|-------|------|------|
| 0 | ORIGINAL RELEASE FOR PRODUCTION | 5.18.64 | | hjb | | |



HOLES: REQ.
 A ~ 15/64 DIA. — 4
 B ~ 9/32 DIA. — 2

| REQ'D. | ITEM | PART NUMBER | DESCRIPTION | SYMBOL |
|---|------|-------------|--|-----------------|
| F. BUDETTI LIST OF MATERIAL | | | | |
| MATERIAL SUPRAMICA 500 | | | THE TECHNICAL MATERIEL CORP. MAMARONECK, NEW YORK | |
| FINISH NATURAL | | | TITLE SUPPORT, BANDSWITCH LEG | |
| UNLESS OTHERWISE SPECIFIED DIMENSIONS ARE IN INCHES AND INCLUDE CHEMICALLY APPLIED OR PLATED FINISHES | | | DRAWN SRG | DATE 1-15-63 |
| | | | CHECKED aa | DATE |
| | | | ELECT. DES. B PB | DATE 1/21/64 |
| | | | MECH. DES. hcc | DATE 2/15/64 |
| | | | FINAL APPROVAL RDL | DATE |
| | | | PX-708 | 0 |
| | | | SHEET | REV. LTR. |

| | | |
|------------|---------------|------------|
| 2 | GPT-200K | AS-124 |
| Q'TY./UNIT | MODEL USED ON | ASS'Y. NO. |
| SCALE | CODE | |

THE CONTENTS OF THIS DRAWING ARE THE EXCLUSIVE PROPERTY OF THE TECHNICAL MATERIEL CORP. ITS UNAUTHORIZED USE OR REPRODUCTION IN WHOLE OR IN PART IS STRICTLY FORBIDDEN.

DECIMALS
.X ± .05
.XX ± .01
.XXX ± .005

TOLERANCES

FRACTIONS
± 1/64
ANGLES
± 0° 30'

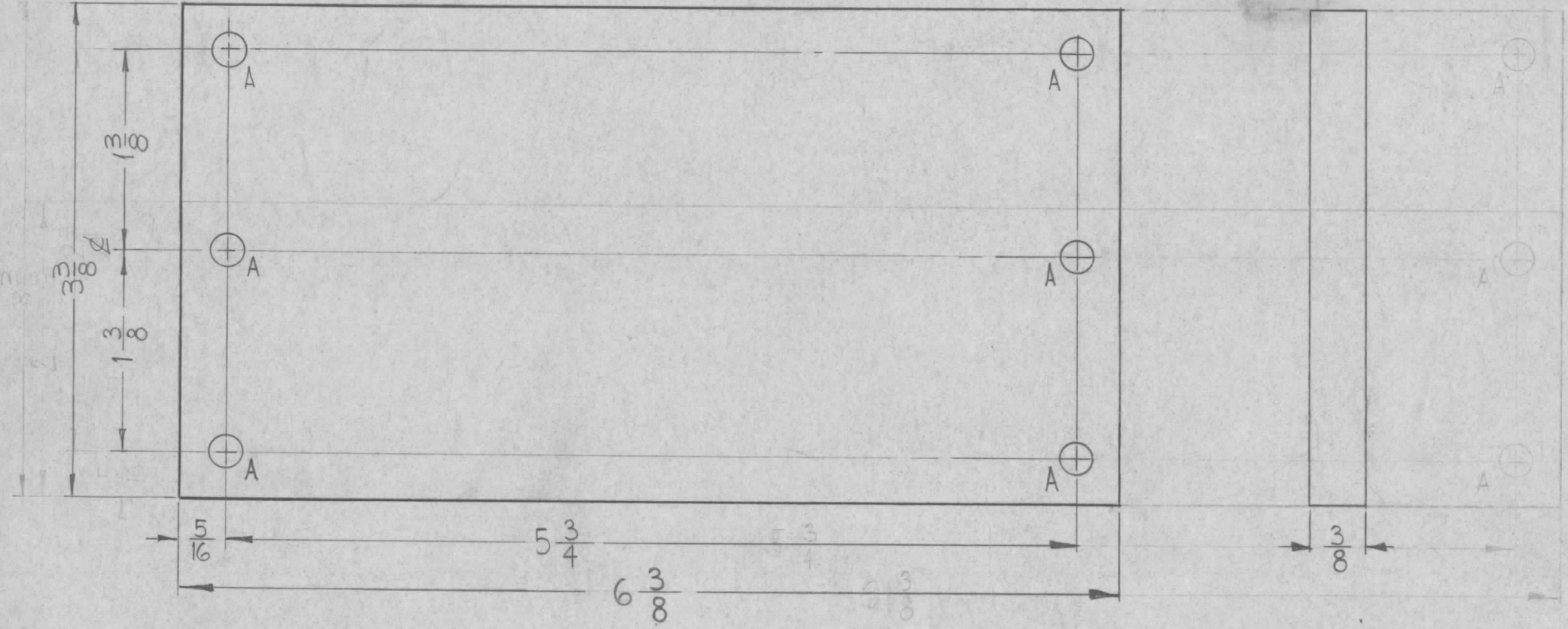
NOTES

| HOLE | DESCRIPTION | REQ. |
|------|-------------|------|
| A | 7/32 DIA. | 6 |

PX-723

REVISIONS

| SYM | DESCRIPTION | DATE | E.M.N. NO. | DRAFT | CHKD | APPD |
|-----|---------------------------------|--------|---------------|-------|------|------|
| Ø | ORIGINAL RELEASE FOR PRODUCTION | 6-9-65 | AA | JC | | |



| REQ'D. | ITEM | PART NUMBER | DESCRIPTION | SYMBOL |
|---|------|---|--|--------------------------------------|
| F. BUDETTI LIST OF MATERIAL | | | | |
| MATERIAL | | 3/8 SILICONE GLASS G7 | THE TECHNICAL MATERIEL CORP. MAMARONECK, NEW YORK | |
| FINISH | | NATURAL | TITLE BOARD, RESISTOR SUPPORT | |
| UNLESS OTHERWISE SPECIFIED DIMENSIONS ARE IN INCHES AND INCLUDE CHEMICALLY APPLIED OR PLATED FINISHES | | DRAWN W. A. FRANCO | DATE 1-9-63 | FINAL APPROVAL <i>[Signature]</i> |
| DECIMALS .X ± .05 .XX ± .01 .XXX ± .005 | | FRACTIONS ± 1/64 ANGLES ± 0° 30' | | DATE 6-9-65 |
| TOLERANCES | | ELECT. DES. | DATE | DATE 6/9/65 |
| | | MECH. DES. | DATE | DATE |
| | | | | Ø |
| | | | | PX-723 |
| | | | | SHEET |
| | | | | REV. LTR. |

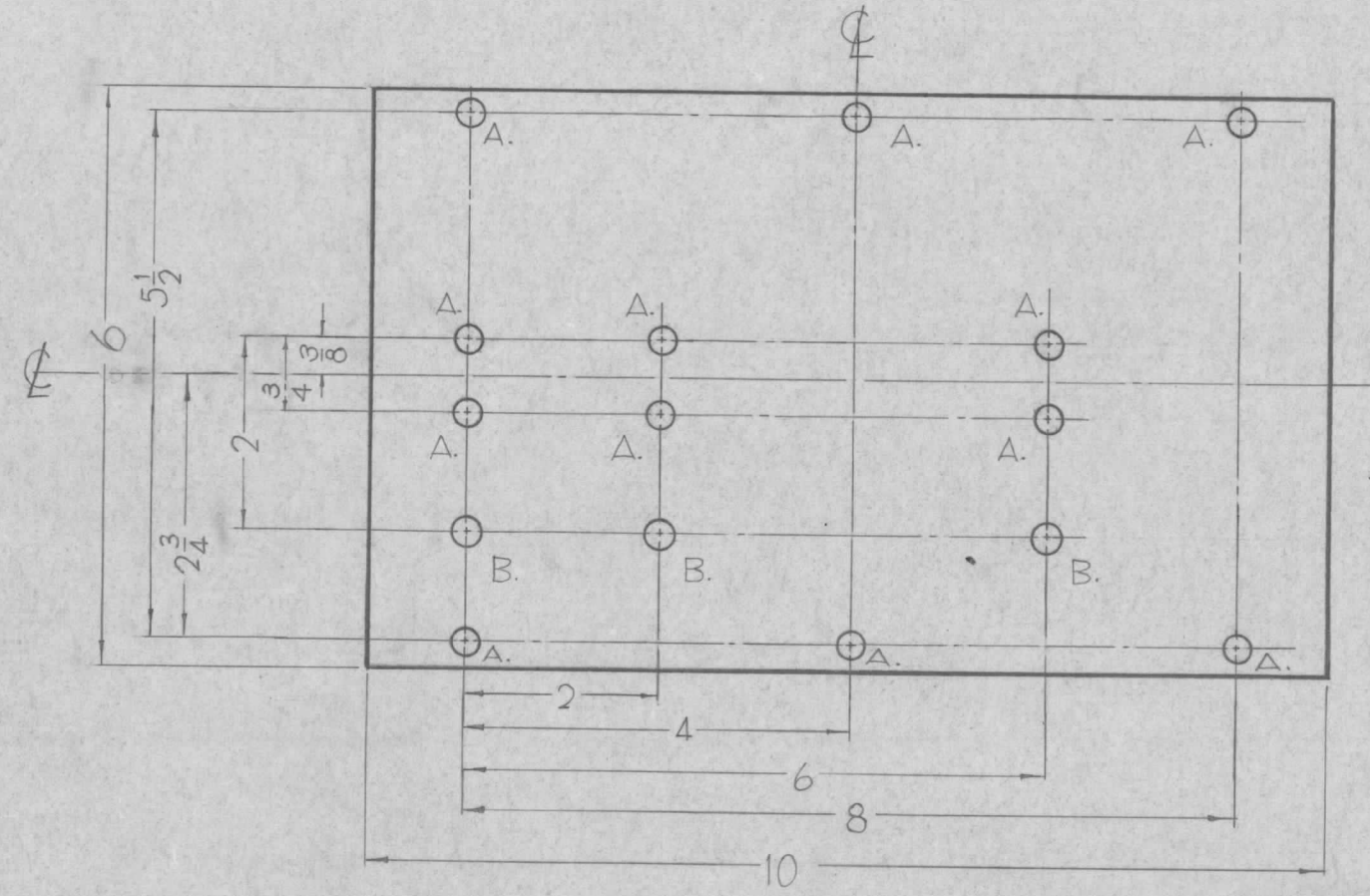
| | | |
|---|---------------|------------|
| 10 | TER-100K | |
| Q'TY./UNIT | MODEL USED ON | ASS'Y. NO. |
| SCALE FULL | CODE | |
| THE CONTENTS OF THIS DRAWING ARE THE EXCLUSIVE PROPERTY OF THE TECHNICAL MATERIEL CORP. ITS UNAUTHORIZED USE OR REPRODUCTION IN WHOLE OR IN PART IS STRICTLY FORBIDDEN. | | |

NOTES

PX-725 0

REVISIONS

| SYM | DESCRIPTION | DATE | E.M.N. NO. | DRAFT | CHKD | APPD |
|-----|---------------------------------|---------|------------|-------|------|------|
| 0 | ORIGINAL RELEASE FOR PRODUCTION | 5.18.64 | | LSB | | |



FRONT VIEW SHOWN

HOLES REQ.
 A. 7/32 (.218)D. 12
 B. 1/4 (.250)D. 3

REF-TMC DWG. LD-1237, 1238

| Q'TY./UNIT | MODEL USED ON CODE | ASS'Y. NO. |
|------------|--------------------|------------|
| 1 | GPT-200K | AP-111 |
| 1 | GPT-200K | AP-109 |

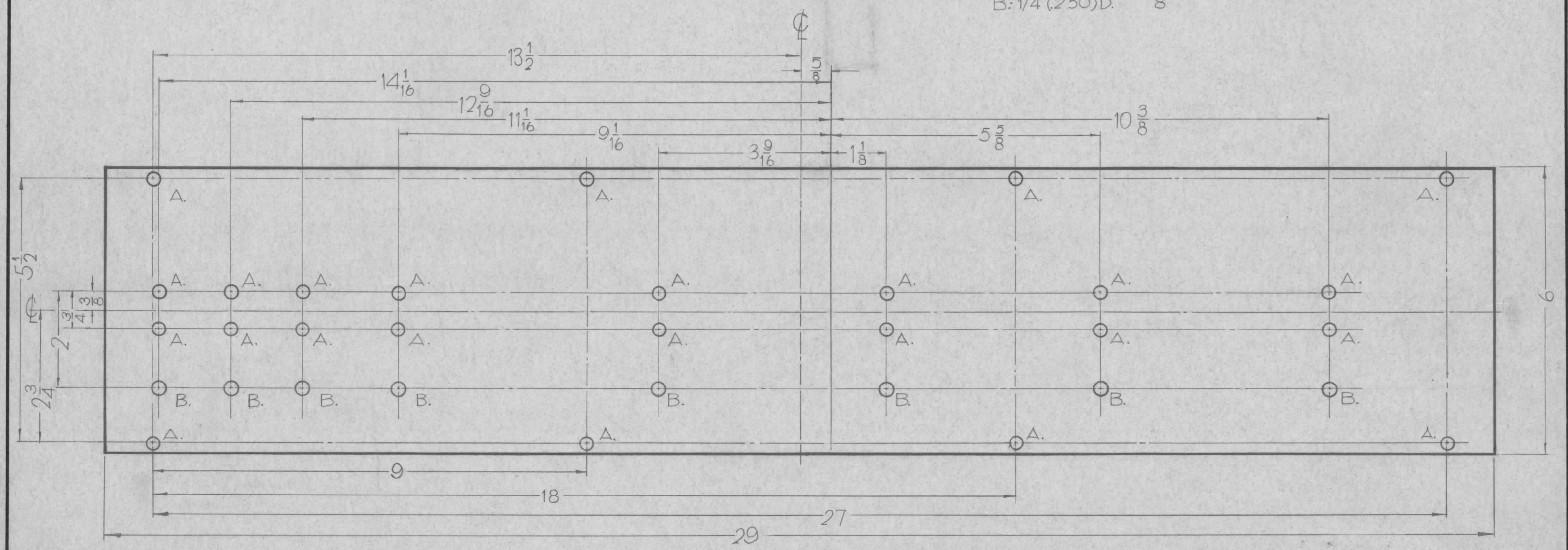
THE CONTENTS OF THIS DRAWING ARE THE EXCLUSIVE PROPERTY OF THE TECHNICAL MATERIEL CORP. ITS UNAUTHORIZED USE OR REPRODUCTION IN WHOLE OR IN PART IS STRICTLY FORBIDDEN.

| REQ'D. | ITEM | PART NUMBER | DESCRIPTION | SYMBOL |
|---|------|-------------|--|--------------|
| F. BUDETT LIST OF MATERIAL | | | | |
| MATERIAL 1/2 THICK G-11 EPOXY | | | THE TECHNICAL MATERIEL CORP. MAMARONECK, NEW YORK | |
| FINISH NATURAL | | | TITLE BOADD. HV. CONTACTS MTG. L. (CROWBAR) MATING | |
| UNLESS OTHERWISE SPECIFIED DIMENSIONS ARE IN INCHES AND INCLUDE CHEMICALLY APPLIED OR PLATED FINISHES | | | DRAWN J.F. VITDO | DATE |
| DECIMALS .X ± .05 .XX ± .01 .XXX ± .005 | | | CHECKED qa | DATE |
| FRACTIONS ± 1/64 ANGLES ± 0° 30' | | | ELECT. DES. JFB | DATE 3/16/64 |
| TOLERANCES | | | MECH. DES. me 2/5/64 | DATE |
| | | | FINAL APPROVAL RSC | DATE |
| | | | PX-725 | 0 |
| | | | SHEET | REV. LTR. |

NOTES

| REVISIONS | | | | | |
|-----------|---------------------------------|---------|------------|-------|-----------|
| SYM | DESCRIPTION | DATE | E.M.N. NO. | DRAFT | CHKD APPD |
| 0 | ORIGINAL RELEASE FOR PRODUCTION | 5.18.64 | | WJB | |

HOLES DEQ.
 A: 7/32 (.218) D. 24
 B: 1/4 (.250) D. 8



FRONT VIEW SHOWN

LD-1226, 1227

| 1 | GPT-200K | AP-111 |
|------------|---------------|------------|
| 1 | GPT 200 K | AP-109 |
| Q'TY./UNIT | MODEL USED ON | ASS'Y. NO. |
| 1/2 | | |
| SCALE | CODE | |

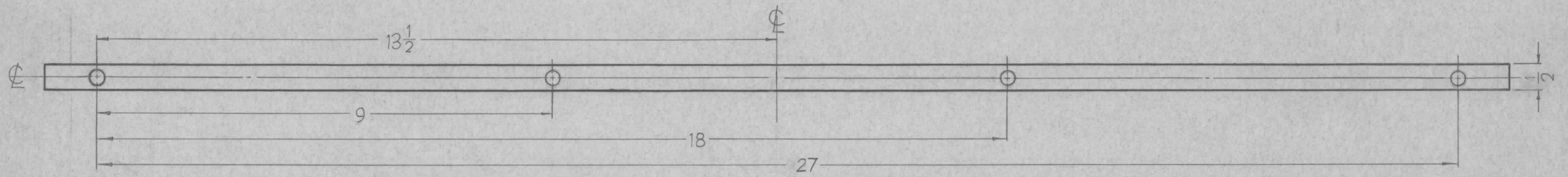
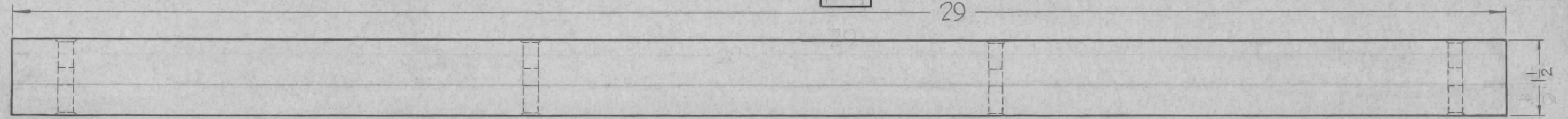
| REQ'D. | ITEM | PART NUMBER | DESCRIPTION | SYMBOL |
|---|------|-------------|---|--------------|
| F. BUDETTI LIST OF MATERIAL | | | | |
| MATERIAL 1/2 THICK G-11 EPOXY | | | THE TECHNICAL MATERIEL CORP. MAMARONECK, NEW YORK | |
| FINISH | | | TITLE BOADD, HV. CONTACTS MTG. (HVB MATING) | |
| UNLESS OTHERWISE SPECIFIED DIMENSIONS ARE IN INCHES AND INCLUDE CHEMICALLY APPLIED OR PLATED FINISHES | | | DRAWN J.F. VITRO | DATE |
| DECIMALS .X ± .05 .XX ± .01 .XXX ± .005 | | | CHECKED aa | DATE 3/16/64 |
| FRACTIONS ± 1/64 ANGLES ± 0° 30' | | | ELECT. DES. 203 | DATE 2/15/64 |
| TOLERANCES | | | MECH. DES. [Signature] | DATE 2/15/64 |
| THE CONTENTS OF THIS DRAWING ARE THE EXCLUSIVE PROPERTY OF THE TECHNICAL MATERIEL CORP. ITS UNAUTHORIZED USE OR REPRODUCTION IN WHOLE OR IN PART IS STRICTLY FORBIDDEN. | | | FINAL APPROVAL [Signature] | DATE |
| | | | PX-730 | 0 |
| | | | SHEET | REV. LTR. |

NOTES

PX-731 0

REVISIONS

| SYM | DESCRIPTION | DATE | E.M.N. NO. | DRAFT | CHKD | APPD |
|-----|---------------------------------|---------|------------|-------|------|------|
| 0 | ORIGINAL RELEASE FOR PRODUCTION | 5.18.64 | | JTB | | |



HOLES REQ
A-7/32(28)D 4

HOLES:

- 1~ DRILL 13/64 (.203) TO .552 MIN. DEPTH.
- 2~ 120° C⁺ SINK .22-.25 DIA.
- 3~ TAP .410 MIN. DEPTH USE HELI-COIL TAP #3FPB.
- 4~ INSTALL ITEM ① 3/4 TO 1-1/2 PITCH BELOW SURFACE.
- 5~ BREAK OFF DRIVING TANG

NOTES

| Q'TY./UNIT | MODEL USED ON | ASS'Y. NO. |
|------------|---------------|------------|
| 2 | GPT-200 K | AP-111 |
| 2 | GPT-200 K | AP-109 |

THE CONTENTS OF THIS DRAWING ARE THE EXCLUSIVE PROPERTY OF THE TECHNICAL MATERIEL CORP. ITS UNAUTHORIZED USE OR REPRODUCTION IN WHOLE OR IN PART IS STRICTLY FORBIDDEN.

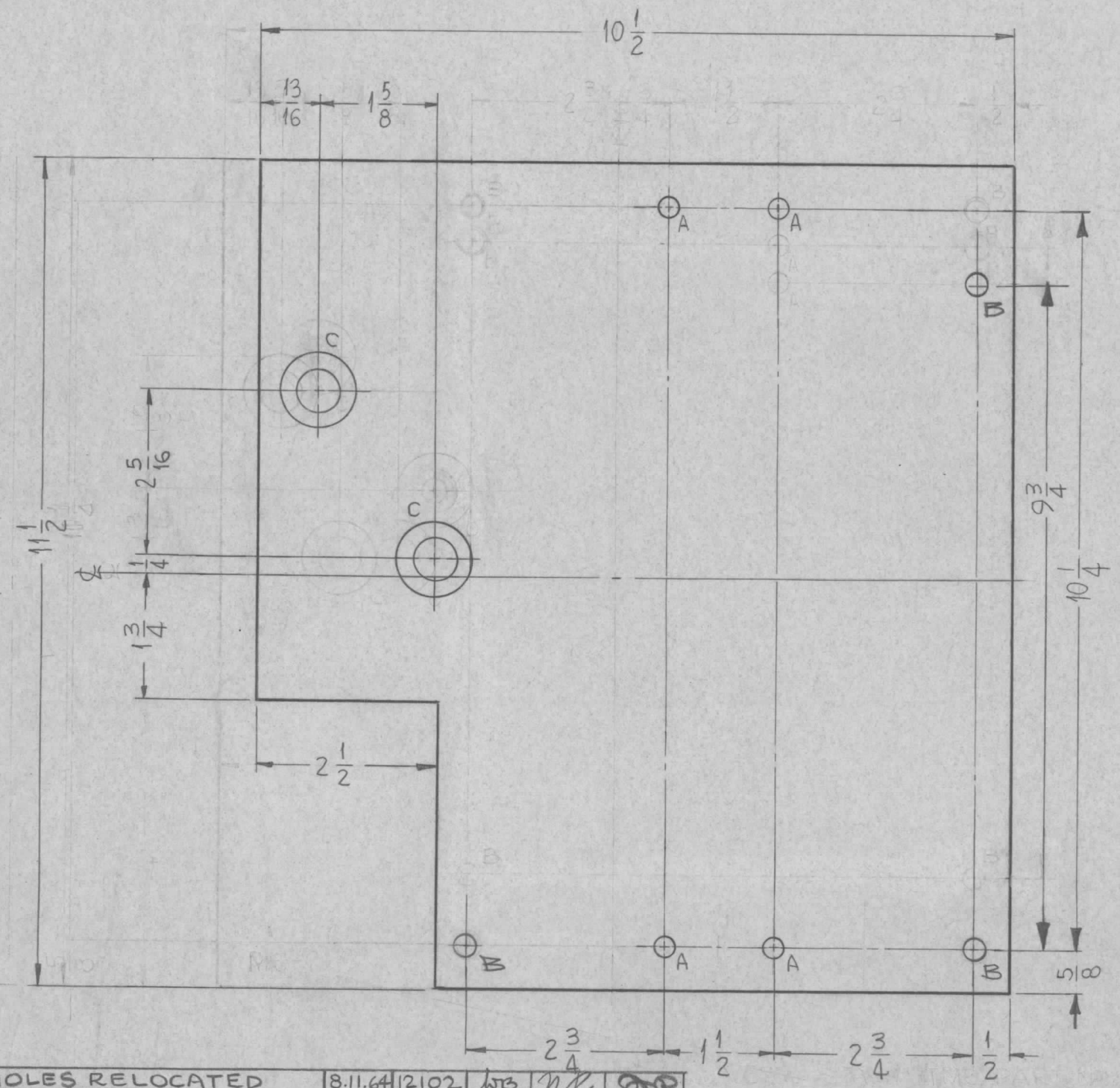
| REQ'D. | ITEM | PART NUMBER | DESCRIPTION | SYMBOL |
|--------|------|---------------|-------------|--------|
| 8 | 1 | NT-139-SF1-20 | HELI-COIL | |

| F. BUDETTI | | LIST OF MATERIAL | | | |
|-------------|--|---|------|----------------|-----------|
| MATERIAL | | 1/2 THICK G-11 EPOXY | | | |
| FINISH | | UNLESS OTHERWISE SPECIFIED DIMENSIONS ARE IN INCHES AND INCLUDE CHEMICALLY APPLIED OR PLATED FINISHES | | | |
| TITLE | | SUPPORT, H.V. CONTACT, HVR BOARD | | | |
| DRAWN | | J.F. VITRO | DATE | FINAL APPROVAL | DATE |
| CHECKED | | aa | DATE | Roc | |
| ELECT. DES. | | JTB | DATE | PX-731 | 0 |
| MECH. DES. | | me | DATE | 2/15/64 | REV. LTR. |

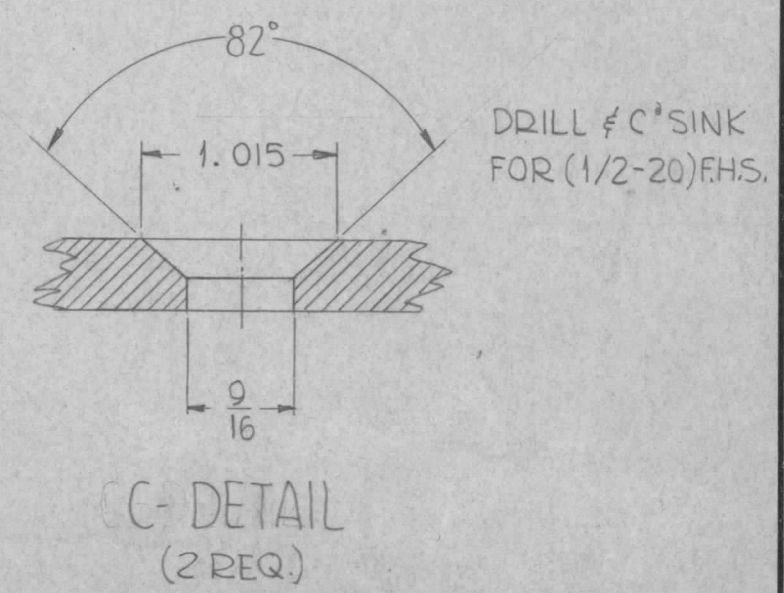
PX-734 B

THE CONTENTS OF THIS DRAWING ARE THE EXCLUSIVE PROPERTY OF THE TECHNICAL MATERIEL CORP. ITS UNAUTHORIZED USE OR REPRODUCTION IN WHOLE OR IN PART IS STRICTLY FORBIDDEN.

| REVISIONS | | | | | | |
|-----------|-----|--------------------------------|--------|------------|-------|------|
| ZONE | SYM | DESCRIPTION | DATE | E.M.N. NO. | DRAFT | CHKD |
| | B | 3 B' HOLES RELOCATED ① DELETED | 6/7/62 | 14194 | ≠ | SCB |



| HOLES | DESCRIPTION | REQ. |
|-------|-------------|------|
| A | 15/64 DIA. | 4 |
| B | 3/8 DIA. | 3 |
| C | SEE DETAIL | |

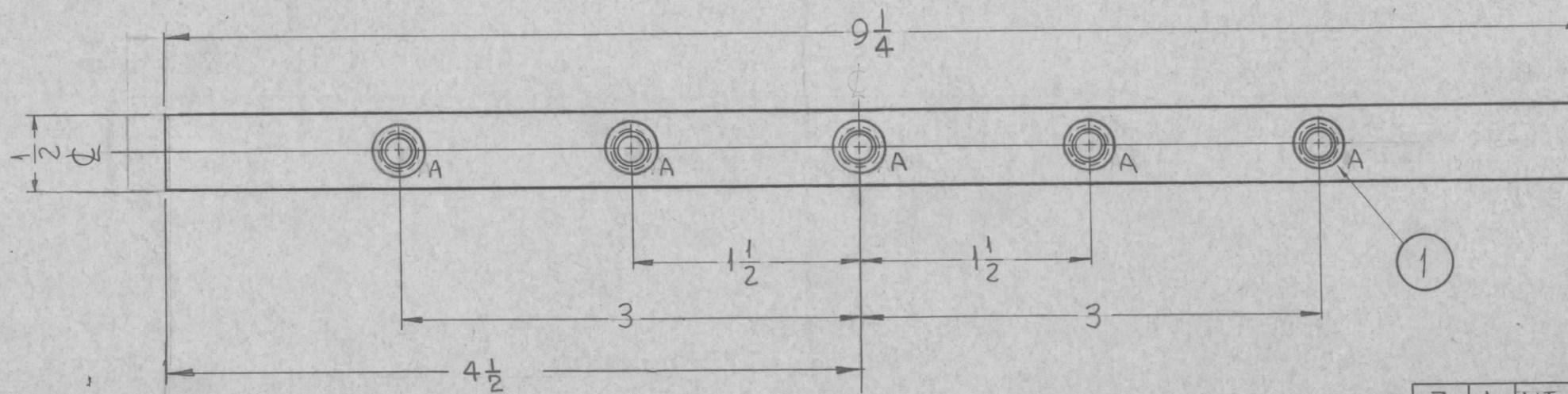
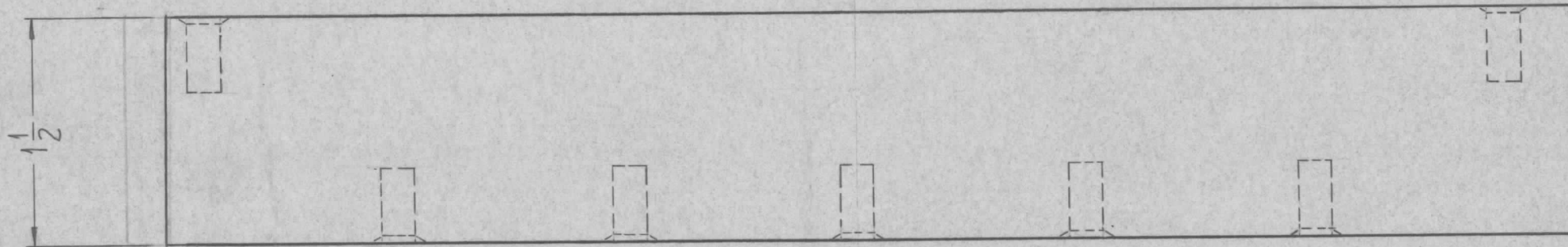
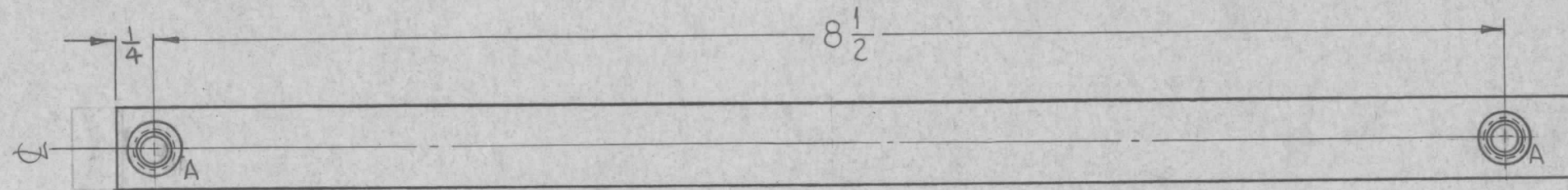


| A | 4 B'-HOLES RELOCATED | 8.11.64 | 12102 | hbs | NR | |
|---|---------------------------------|---|----------|---------|------------|-----------|
| O | ORIGINAL RELEASE FOR PRODUCTION | 5-13-64 | O | A.M. | | |
| SYM | DESCRIPTION | DATE | CH. NO. | DRAFTS | CHECKER | ENG. APP. |
| UNLESS OTHERWISE SPECIFIED: DIMENSIONS ARE IN INCHES TOLERANCES ON FRACTIONS ± 1/64 DECIMALS ± .005 ANGLES ± 1/2° | | SCALE: MAXIMUM ALLOWABLE TOLERANCES HAVE BEEN DETERMINED AND ANY DEVIATIONS WILL BE CAUSE FOR REJECTION. REMOVE ALL BURRS AND SHARP EDGES | | | | |
| CODE A | | 2 | GPT-200K | AX-393 | A-2753 | 10-15-62 |
| | | REQ. PER UNIT | MODEL | SECTION | ASS'Y. NO. | DATE |

| REQ. | ITEM | PART NO. | F. BUDETTI | DESCRIPTION | SYMBOL |
|------|----------------|----------|-----------------|--|----------------|
| | 3/8 | | | THE TECHNICAL MATERIEL CORP. MAMARONECK, NEW YORK | |
| | SILICONE GLASS | | | BOARD SUPPORT FILAMENT DECOUPLERS | |
| | G-7 | | SRG | aa | RJR |
| | | | DRAWN | CHECKED | FINAL APPROVAL |
| | | | SCB | hsc 2/15/64 | PX-734 B |
| | | | ELEC. DES. APP. | MECH. DES. APP. | |

PX-735 0

THE CONTENTS OF THIS DRAWING ARE THE EXCLUSIVE PROPERTY OF THE TECHNICAL MATERIEL CORP. ITS UNAUTHORIZED USE OR REPRODUCTION IN WHOLE OR IN PART IS STRICTLY FORBIDDEN.



HOLE

- A - 1 - DRILL 13/64(.200) TO (.552) MIN. DEPTH
- 2 - 120° COUNTERSINK .22-.25 DIA.
- 3 - TAP .410 MIN. DEPTH.
USE HELI-COIL TAP # 3FPB
- 4 - INSTALL ITEM ① 3/4 TO 1-1/2 PITCH BELOW SURFACE
- 5 - BREAK OFF DRIVING TANG.

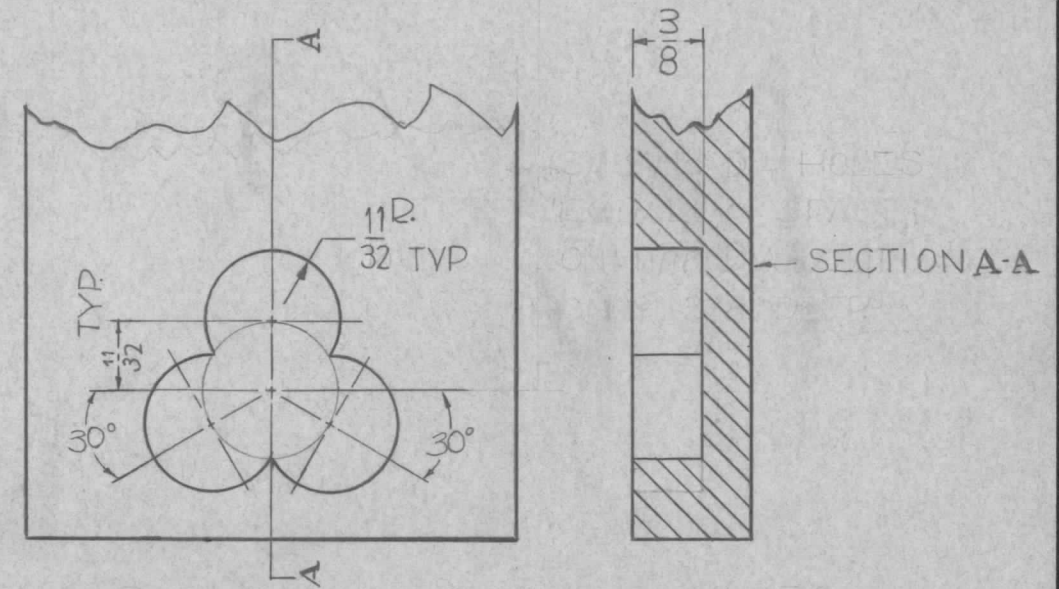
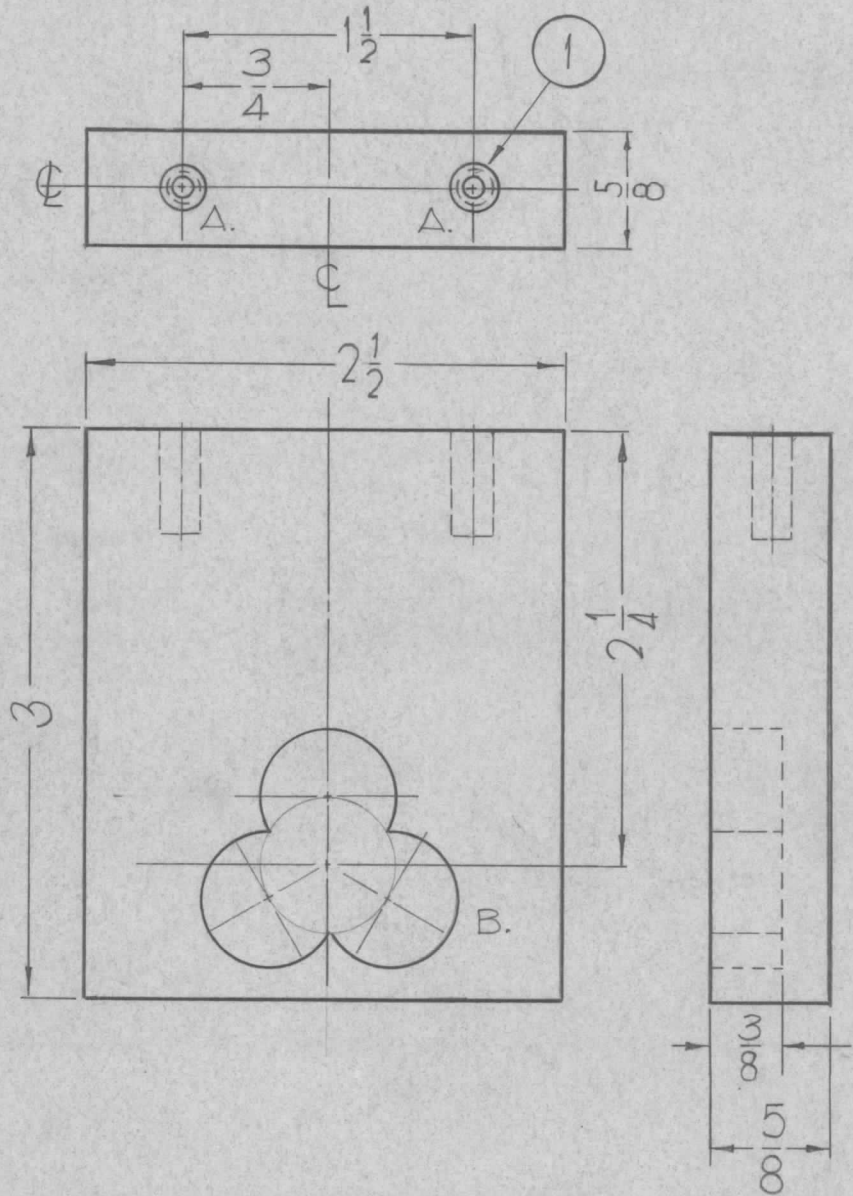
| | | | | |
|--------------------|-------------------|-----------------|------------------------------|----------------|
| 7 | 1 | NT-139-SFI-20 | INSERT, SCREWLOCK | |
| REQ. | ITEM | PART NO. | F. BUDETTI | DESCRIPTION |
| 1/2 | | | THE TECHNICAL MATERIEL CORP. | |
| STOCK SIZE | | | MAMARONECK, NEW YORK | |
| EPOXY | | | BOARD, SUPPORT RESISTOR | |
| MATERIAL | | | | |
| G-11 | | SRG | aa | ROC |
| TYPE & TEMPER | HEAT TREAT. SPEC. | DRAWN | CHECKED | FINAL APPROVAL |
| | | OB | asc 2/15/64 | PX-735 0 |
| FINISH & SPEC. NO. | | ELEC. DES. APP. | MECH. DES. APP. | |

| | | | | | | |
|---|---------------------------------|---|---------|--------|---------|-----------|
| 0 | ORIGINAL RELEASE FOR PRODUCTION | 5/26/64 | 0 | A.M. | | |
| SYM | DESCRIPTION | DATE | CH. NO. | DRAFTS | CHECKER | ENG. APP. |
| UNLESS OTHERWISE SPECIFIED: | | SCALE: \times | | | | |
| DIMENSIONS ARE IN INCHES | | MAXIMUM ALLOWABLE TOLERANCES HAVE BEEN DETERMINED AND ANY DEVIATIONS WILL BE CAUSE FOR REJECTION. | | | | |
| TOLERANCES ON FRACTIONS $\pm 1/64$ DECIMALS $\pm .005$ ANGLES $\pm 1/2^\circ$ | | REMOVE ALL BURRS AND SHARP EDGES | | | | |

| | | | | |
|---------------|----------|---------|------------|----------|
| 4 | GPT-200K | | AX-394 | 10-19-62 |
| REQ. PER UNIT | MODEL | SECTION | ASS'Y. NO. | DATE |
| USED ON | | | | |

PX-736 0

THE CONTENTS OF THIS DRAWING ARE THE EXCLUSIVE PROPERTY OF THE TECHNICAL MATERIEL CORP. ITS UNAUTHORIZED USE OR REPRODUCTION IN WHOLE OR IN PART IS STRICTLY FORBIDDEN.



(3) 11/16 DIA. HOLES EQUALLY SPACED ON 11/16 DIA. CUT ONLY 3/8 DEEP.

DETAIL B.

(1)REQ.

HOLES:

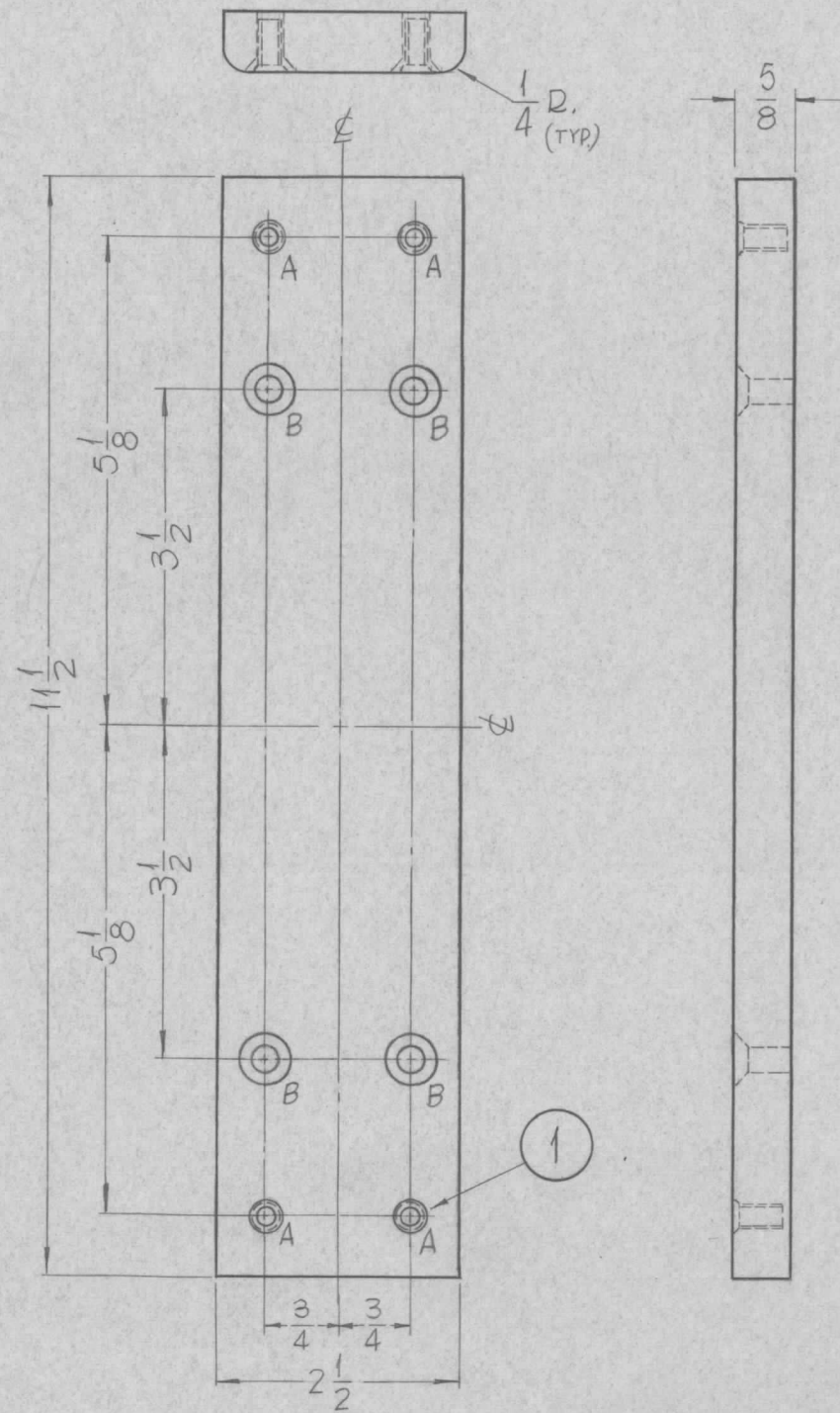
- A~1-DRILL 13/64 (.203) TO .552 MIN. DEPTH.
- 2-120° C'SINK .22 - .25 DIA.
- 3-TAP, 410 MIN. DEPTH USE HELI-COIL TAP NO. 3FPB
- 4-INSTALL ITEM ① 3/4 TO 1-1/2 PITCH BELOW SURFACE
- 5-BREAK OFF DRIVING TANG.

B~ SEE DETAIL

| 2 | 1 | NT-139-SF-1-20 | HELI-COIL | |
|--------------------|------|----------------|------------------------------|-----------------|
| REQ. | ITEM | PART NO. | DESCRIPTION | SYMBOL |
| 5/8 THICK | | | THE TECHNICAL MATERIEL CORP. | |
| STOCK SIZE | | | MAMARONECK, NEW YORK | |
| SILICONE-GLASS G-7 | | | SUPPORT CORES | |
| MATERIAL | | | | |
| | | | J.F. VITRO | aa |
| TYPE & TEMPER | | | HEAT TREAT. SPEC. | FINAL APPROVAL |
| | | | DRAWN | CHECKED |
| | | | MECH. DES. APP. | ELEC. DES. APP. |
| FINISH & SPEC. NO. | | | PX-736 0 | |

| 0 | ORIGINAL RELEASE FOR PRODUCTION | 5-13-64 | 0 | A.M. | |
|--------------------------------|---------------------------------|---|---------|--------|---------|
| SYM | DESCRIPTION | DATE | CH. NO. | DRAFTS | CHECKER |
| UNLESS OTHERWISE SPECIFIED: | | SCALE: | | | |
| DIMENSIONS ARE IN INCHES | | MAXIMUM ALLOWABLE TOLERANCES HAVE BEEN DETERMINED AND ANY DEVIATIONS WILL BE CAUSE FOR REJECTION. | | | |
| TOLERANCES ON FRACTIONS ± 1/64 | | REMOVE ALL BURRS AND SHARP EDGES | | | |
| DECIMALS ± .005 | | | | | |
| ANGLES ± 1/2° | | | | | |
| CODE A | | | | | |

| 4 | GPT-200 K | AX-393 | A-2753 | 3-12-63 |
|---------------|-----------|---------|------------|---------|
| REQ. PER UNIT | MODEL | SECTION | ASS'Y. NO. | DATE |
| USED ON | | | | |



PX-737

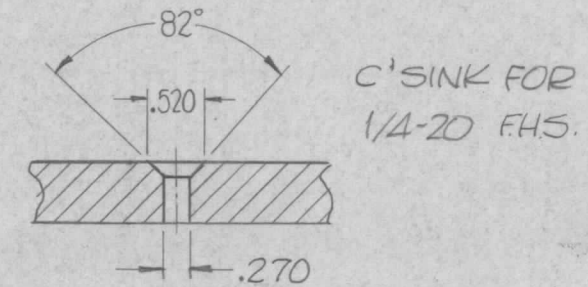
REVISIONS

| SYM | DESCRIPTION | DATE | E.M.N. NO. | DRAFT | CHKD | APPD |
|-----|---------------------------------|---------|------------|-------|------|------|
| 0 | ORIGINAL RELEASE FOR PRODUCTION | 5-13-64 | 0 | A.M. | | |

HOLES:

- A ~ 1-DRILL 13/64 (.203) TO .552 MIN. DEPTH.
- 2-120° C' SINK .22-.25 DIA.
- 3-TAP, 410 MIN. DEPTH USE HELI-COIL TAP NO. 3FPB
- 4-INSTALL ITEM ① 3/4 TO 1-1/2 PITCH BELOW SURFACE
- 5-BREAK OFF DRIVING TANG.

B ~ SEE DETAIL.



C' SINK FOR
1/4-20 F.H.S.

| REQ'D. | ITEM | PART NUMBER | DESCRIPTION | SYMBOL |
|--------|------|----------------|-------------|--------|
| 4 | 1 | NT-139-SF-1-20 | HELI-COIL | |

F. BUDETTI LIST OF MATERIAL

| | | | |
|--------------------|--|--|--|
| MATERIAL | THE TECHNICAL MATERIEL CORP. MAMARONECK, NEW YORK | | |
| G-7 SILICONE GLASS | TITLE | | |
| | SUPPORT, FILAMENT COIL | | |

| | | | | |
|---|-------------|---------|----------------|-----------|
| UNLESS OTHERWISE SPECIFIED DIMENSIONS ARE IN INCHES AND INCLUDE CHEMICALLY APPLIED OR PLATED FINISHES | DRAWN | DATE | FINAL APPROVAL | DATE |
| | SRG | 3-13-63 | | |
| | CHECKED | DATE | | |
| | aa | | | |
| DECIMALS | ELECT. DES. | DATE | PX-737 | 0 |
| .X ± .05 | 20 | 5/16/64 | | |
| .XX ± .01 | MECH. DES. | DATE | SHEET | REV. LTR. |
| .XXX ± .005 | | 2/15/64 | | |

NOTES

THE CONTENTS OF THIS DRAWING ARE THE EXCLUSIVE PROPERTY OF THE TECHNICAL MATERIEL CORP. ITS UNAUTHORIZED USE OR REPRODUCTION IN WHOLE OR IN PART IS STRICTLY FORBIDDEN.

PX-742 0

THE CONTENTS OF THIS DRAWING ARE THE EXCLUSIVE PROPERTY OF THE TECHNICAL MATERIEL CORP. ITS UNAUTHORIZED USE OR REPRODUCTION IN WHOLE OR IN PART IS STRICTLY FORBIDDEN.

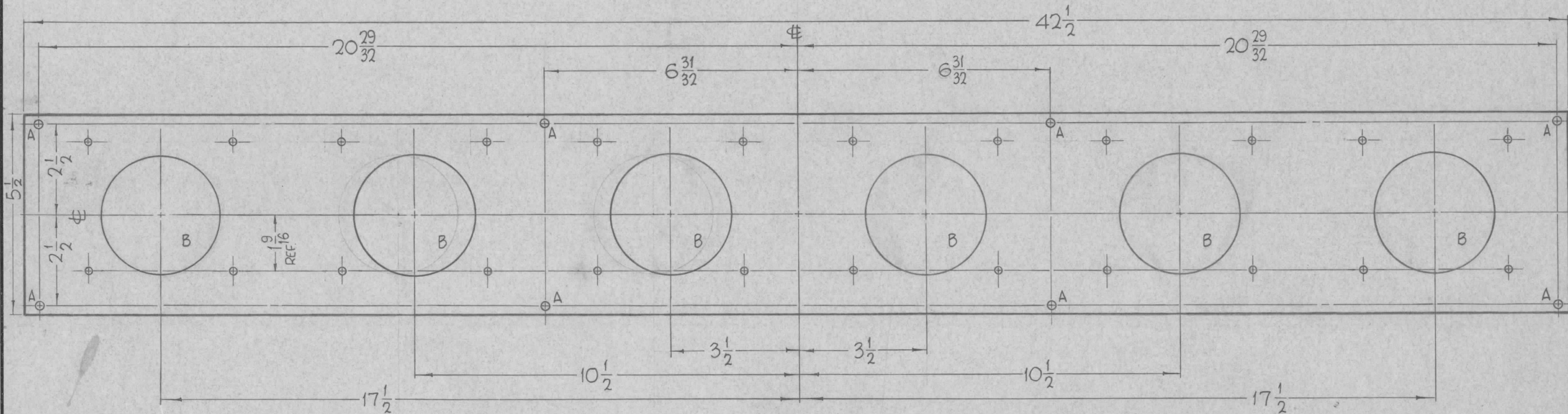
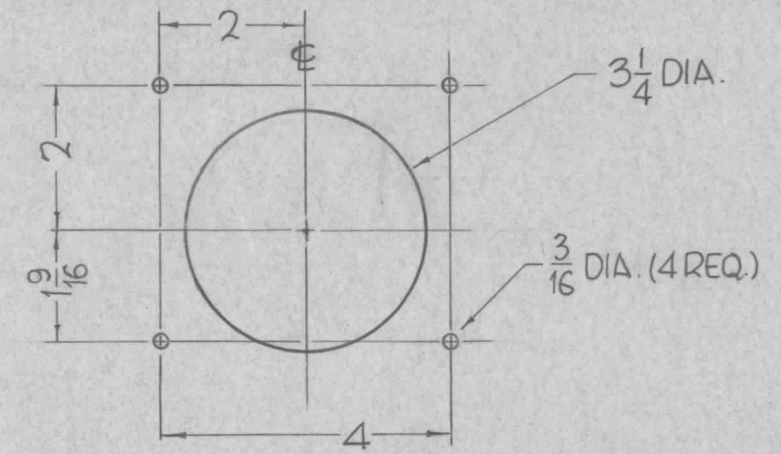
HOLES

A-3/16 DIA.

REQ

8

"B"
(6 REQ.)

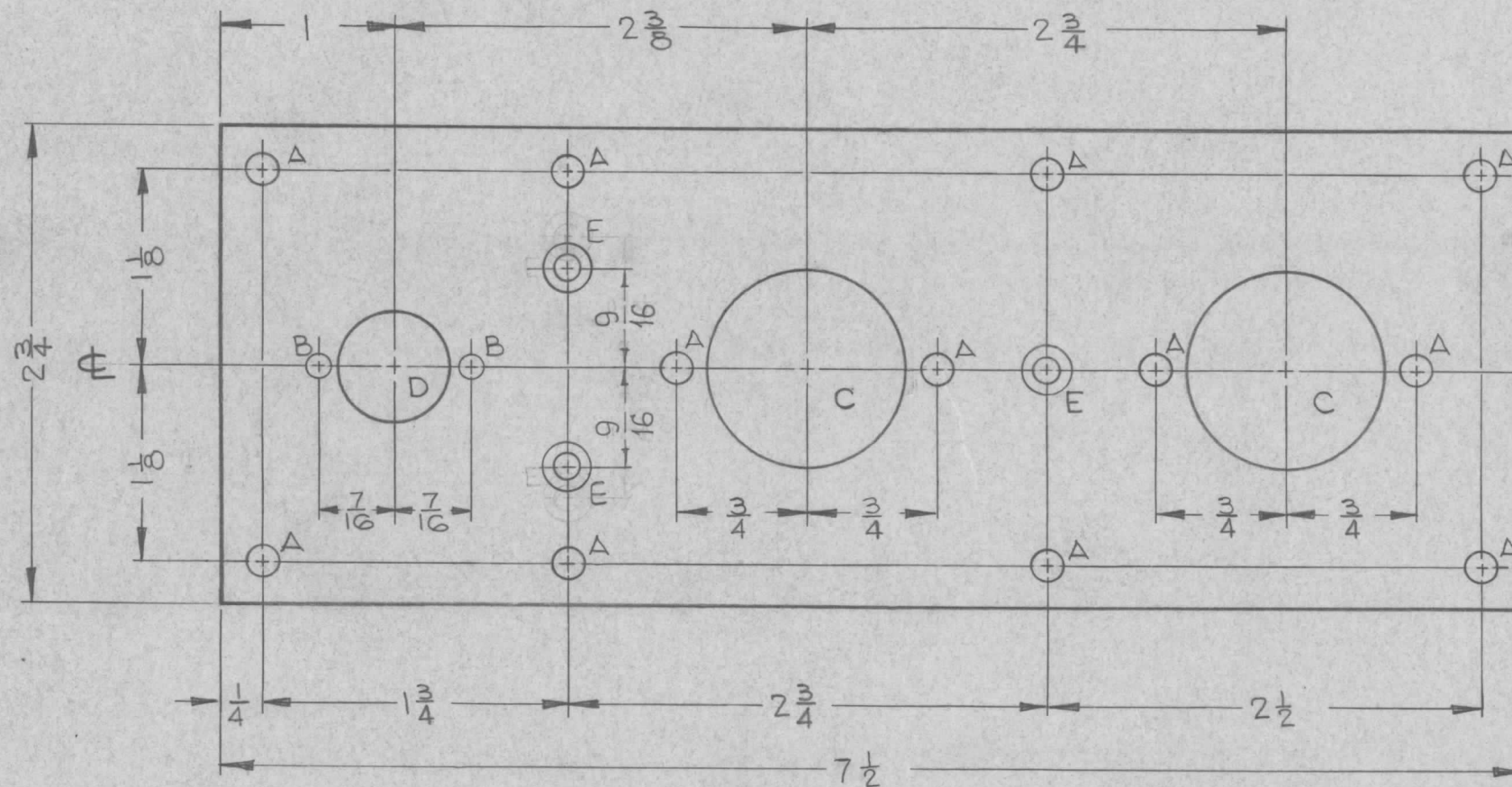


REF - TMC DWG. LD-1250

| SYMBOL | | | | | | REQ. | ITEM | PART NO. | F. BUDETTI | DESCRIPTION | SYMBOL |
|--|--|--|--|--|--|------|----------|----------|------------|--------------------|------------------------------|
| O ORIGINAL RELEASE FOR PRODUCTION | | | | | | 1 | GPT-200K | AM-118 | 8-14-63 | 1/4 THICK | THE TECHNICAL MATERIEL CORP. |
| 5-13-64 O A.M. | | | | | | | | | | STOCK SIZE | MAMARONECK, NEW YORK |
| SYMBOL DESCRIPTION DATE CH. NO. DRAFTS CHECKER ENG. APP. | | | | | | | | | | PHENOLIC | PANEL, METER MTG. |
| UNLESS OTHERWISE SPECIFIED: | | | | | | | | | | MATERIAL | FINAL AMPL. |
| DIMENSIONS ARE IN INCHES | | | | | | | | | | XXXXP | John C. Biele |
| TOLERANCES ON FRACTIONS ± 1/64 DECIMALS ± .005 ANGLES ± 1/2° | | | | | | | | | | TYPE & TEMPER | DRAWN |
| SCALE: 3/8" = 1" | | | | | | | | | | HEAT TREAT. SPEC. | CHECKED |
| MAXIMUM ALLOWABLE TOLERANCES HAVE BEEN DETERMINED AND ANY DEVIATIONS WILL BE CAUSE FOR REJECTION. REMOVE ALL BURRS AND SHARP EDGES | | | | | | | | | | BLACK MATTE | FINAL APPROVAL |
| CODE A | | | | | | | | | | FINISH & SPEC. NO. | ELÉC. DES. APP. |
| | | | | | | | | | | | MECH. DES. APP. |
| | | | | | | | | | | | PX-742 0 |

PX-754 0

THE CONTENTS OF THIS DRAWING ARE THE EXCLUSIVE PROPERTY OF THE TECHNICAL MATERIEL CORP. ITS UNAUTHORIZED USE OR REPRODUCTION IN WHOLE OR IN PART IS STRICTLY FORBIDDEN.



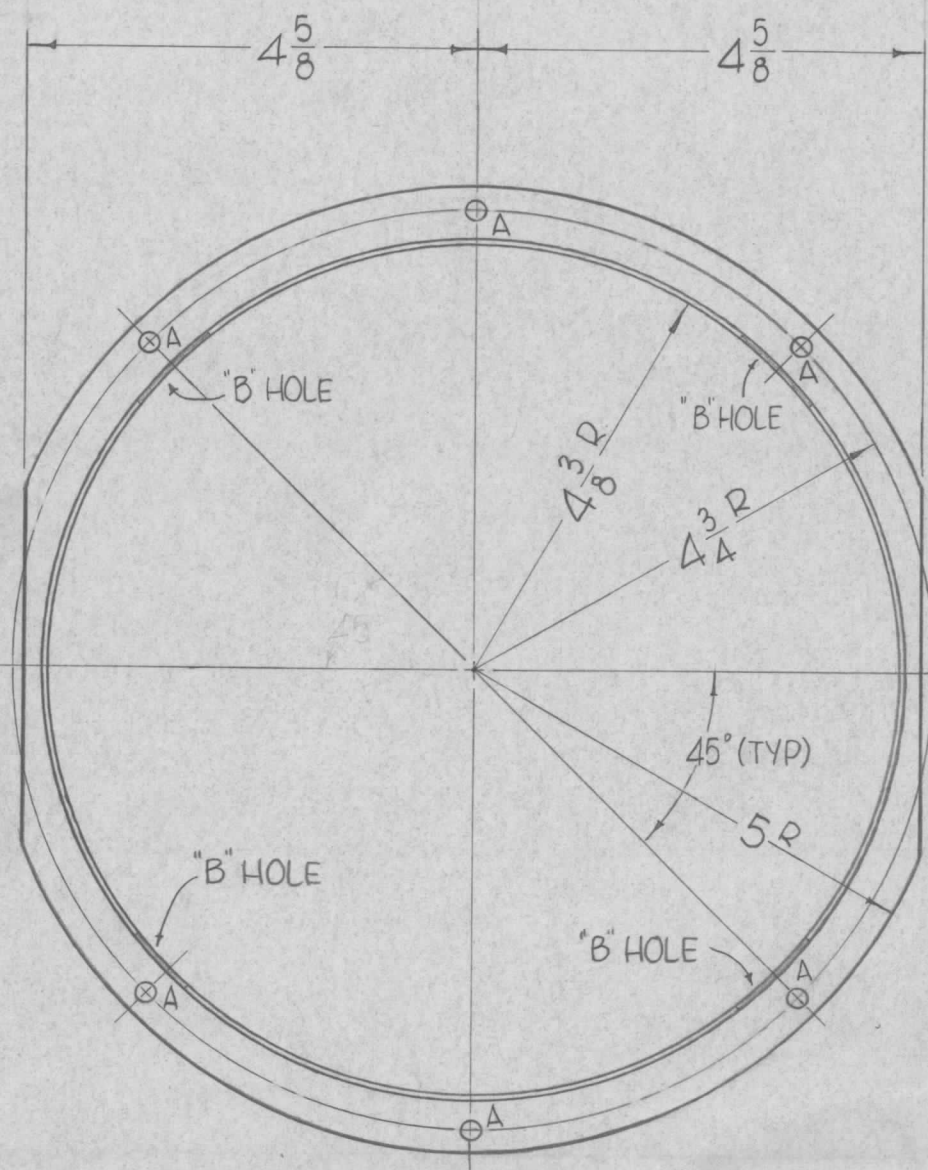
| LEGEND | | |
|--------|-----------------------------------|-----|
| HOLE | DESCRIPTION | REQ |
| A | 11/64 DIA. | 12 |
| B | 1/8 DIA. | 2 |
| C | 1/8 DIA. | 2 |
| D | 5/8 DIA. | 1 |
| E | .144 DIA THRU, C'SK 82°x.284 DIA. | 3 |

| 0 | ORIGINAL RELEASE FOR PRODUCTION | 3-3-64 | A.M. | | | |
|--|---------------------------------|---|---------|--------|---------|-----------|
| SYM | DESCRIPTION | DATE | CH. NO. | DRAFTS | CHECKER | ENG. APP. |
| UNLESS OTHERWISE SPECIFIED: | | SCALE: 1:1 | | | | |
| DIMENSIONS ARE IN INCHES | | MAXIMUM ALLOWABLE TOLERANCES HAVE BEEN DETERMINED AND ANY DEVIATIONS WILL BE CAUSE FOR REJECTION. | | | | |
| TOLERANCES ON FRACTIONS ± 1/64 DECIMALS ± .005 ANGLES ± 1/2° | | REMOVE ALL BURRS AND SHARP EDGES | | | | |

| 1 | GPT-200K | | AP-10B | 7-25-63 |
|---------------|----------|---------|------------|---------|
| REQ. PER UNIT | MODEL | SECTION | ASS'Y. NO. | DATE |
| USED ON | | | | |

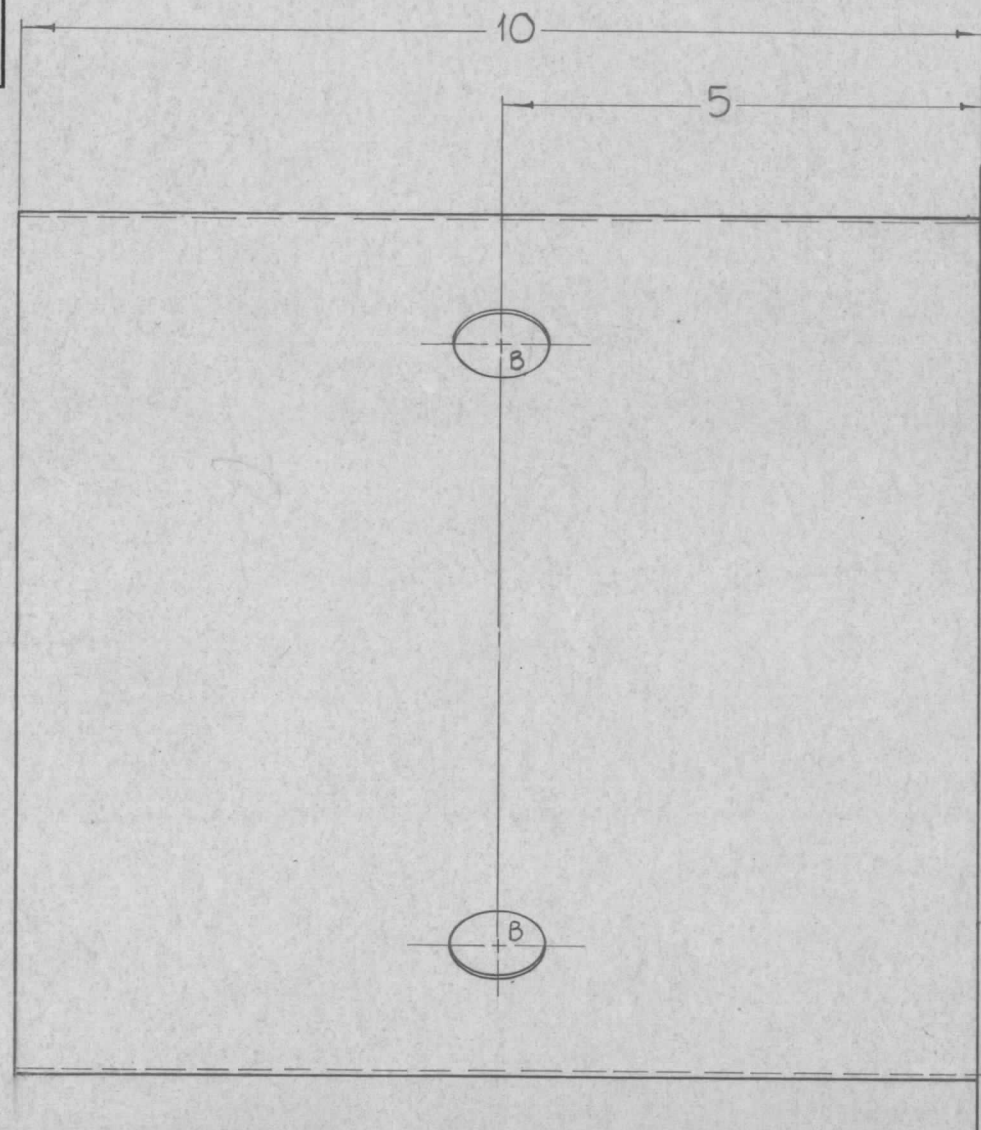
| REQ. | ITEM | PART NO. | F. BUDETTI | DESCRIPTION | SYMBOL |
|------|----------------|----------|--------------------|--|-----------------|
| | 1/8 | | | THE TECHNICAL MATERIEL CORP. MAMARONECK, NEW YORK | |
| | XXXXP PHENOLIC | | | BOARD, COMPONENT MTG | |
| | | | | | |
| | | | <i>R. Chianese</i> | <i>JOB</i> | <i>RJC</i> |
| | | | 7-25-63 | DRAWN | CHECKED |
| | | | | | FINAL APPROVAL |
| | | | | NATURAL 5-113 | PX-754 |
| | | | | FINISH & SPEC. NO. | |
| | | | | ELEC. DES. APP. | MECH. DES. APP. |

HOLES REQ
 A - 3/16 DIA. 6
 B - 1" DIA. 90° APART AS SHOWN 4



PX-760

| REVISIONS | | | | | |
|-----------|--|---------|------------|-------|-----------|
| SYM | DESCRIPTION | DATE | E.M.N. NO. | DRAFT | CHKD APPD |
| Ø | ORIGINAL ORIGINAL RELEASE FOR PRODUCTION | 8/18/69 | Ø | Ø | |



PROCESSING:
 BAKE IN VACUUM, 300°F - 90 MIN.
 FINISHING
 PAINT TMC GRAY, BAKE 225°F - 20 MIN.

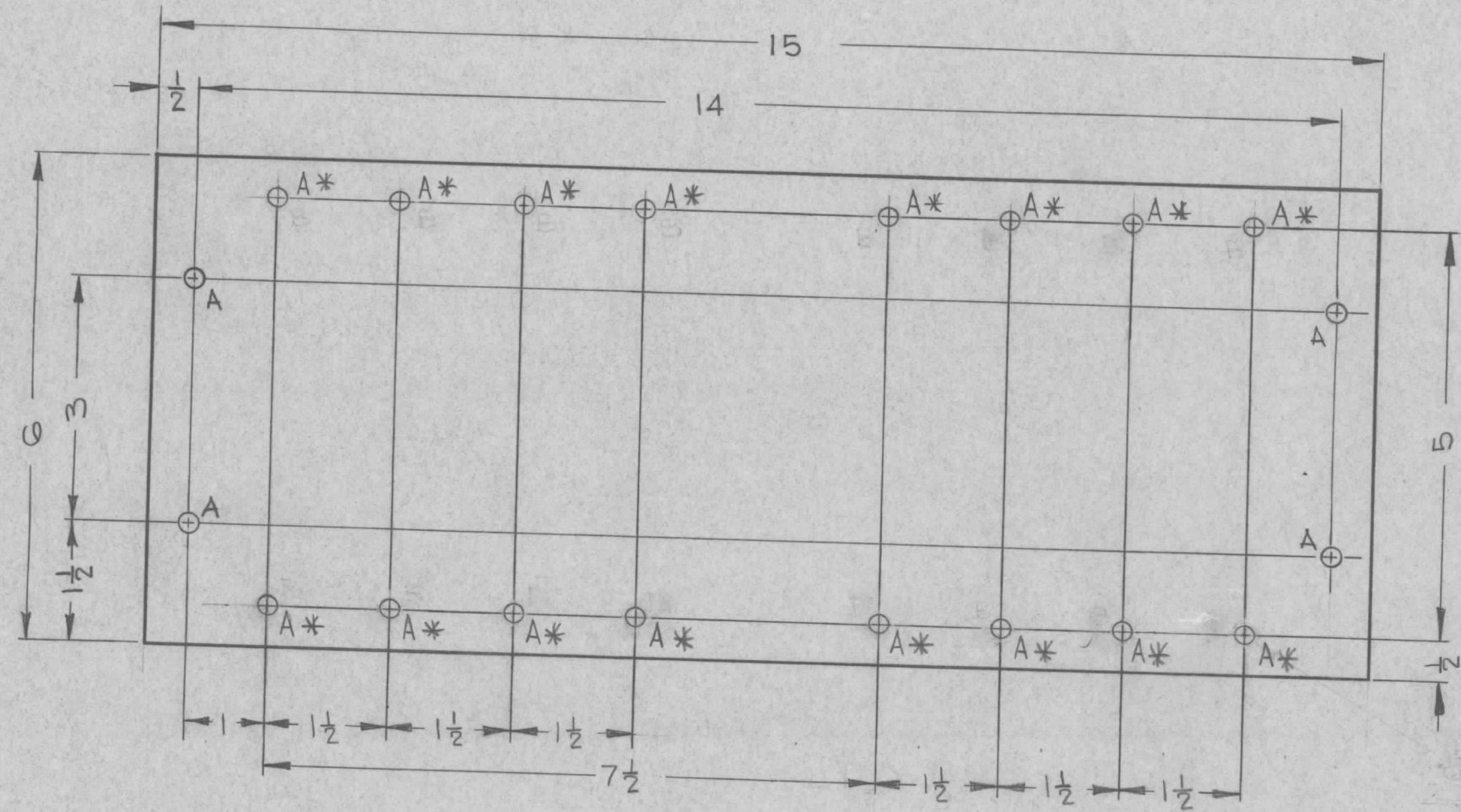
NOTES

THE CONTENTS OF THIS DRAWING ARE THE EXCLUSIVE PROPERTY OF THE TECHNICAL MATERIEL CORP. ITS UNAUTHORIZED USE OR REPRODUCTION IN WHOLE OR IN PART IS STRICTLY FORBIDDEN.

| REQ'D. | ITEM | PART NUMBER | DESCRIPTION | SYMBOL |
|---|------|-------------|--|--------------|
| F. BUDETTI LIST OF MATERIAL | | | | |
| MATERIAL 83-VP, 3PLY STRANDREG PREIMPREGNET (POLYESTER) FIBERGLASS | | | THE TECHNICAL MATERIEL CORP. MAMARONECK, NEW YORK | |
| FINISH SEE NOTES | | | TITLE FLUE, AIR | |
| UNLESS OTHERWISE SPECIFIED DIMENSIONS ARE IN INCHES AND INCLUDE CHEMICALLY APPLIED OR PLATED FINISHES | | | DRAWN John C Biele | DATE 8-10-63 |
| DECIMALS .X ± .05 .XX ± .01 .XXX ± .005 | | | CHECKED JCB | DATE 6-9-65 |
| FRACTIONS ± 1/64 ANGLES ± 0° 30' | | | ELECT. DES. SD | DATE |
| TOLERANCES | | | MECH. DES. SD | DATE |
| FINAL APPROVAL [Signature] | | | | DATE 8/18/69 |
| SHEET PX-760 | | | | REV. LTR. Ø |

PX-766 A

THE CONTENTS OF THIS DRAWING ARE THE EXCLUSIVE PROPERTY OF THE TECHNICAL MATERIEL CORP. ITS UNAUTHORIZED USE OR REPRODUCTION IN WHOLE OR IN PART IS STRICTLY FORBIDDEN.



HOLE
 A — 15/64 DIA. THRU — 20 REQ
 B — 1/8 DIA. THRU TO 1/2 IN. DEPTH
 — 120°C MAX. 200-330°C MIN.
 — TAP 1/32 DIA. DEPTH 1/16 IN.
 — TAP #4 CPA-H2
 — INSTALL ITEM (I) 3/4 TO 1/2
 — PITCH BELOW SURFACE
 — PRIOR TO DRIVING TAP —

A* - MOUNT ITEM NO.1 (16 REQ)

FINISH - FUNGUS PROOFING PER TMC SPECIFICATION S-113

| | | | | | | |
|---------------------------------|-------------|-------|---------|--------------------|--------------------|-----------|
| IT. I WAS NT-139-SC 415 | 7.30.64 | 11974 | WB | <i>[Signature]</i> | <i>[Signature]</i> | |
| ORIGINAL RELEASE FOR PRODUCTION | 2/7/64 | | | | | |
| SYM | DESCRIPTION | DATE | CH. NO. | DRAFTS | CHECKER | ENG. APP. |

UNLESS OTHERWISE SPECIFIED:
 DIMENSIONS ARE IN INCHES
 TOLERANCES ON FRACTIONS ± 1/64 DECIMALS ± .005 ANGLES ± 1/2°

SCALE: 1:2
 MAXIMUM ALLOWABLE TOLERANCES HAVE BEEN DETERMINED AND ANY DEVIATIONS WILL BE CAUSE FOR REJECTION. REMOVE ALL BURRS AND SHARP EDGES

| | | | | |
|---------------|----------|---------|------------|---------|
| 1 | GPT-200K | AX-394 | A-3259 | 7-24-63 |
| REQ. PER UNIT | MODEL | SECTION | ASS'Y. NO. | DATE |

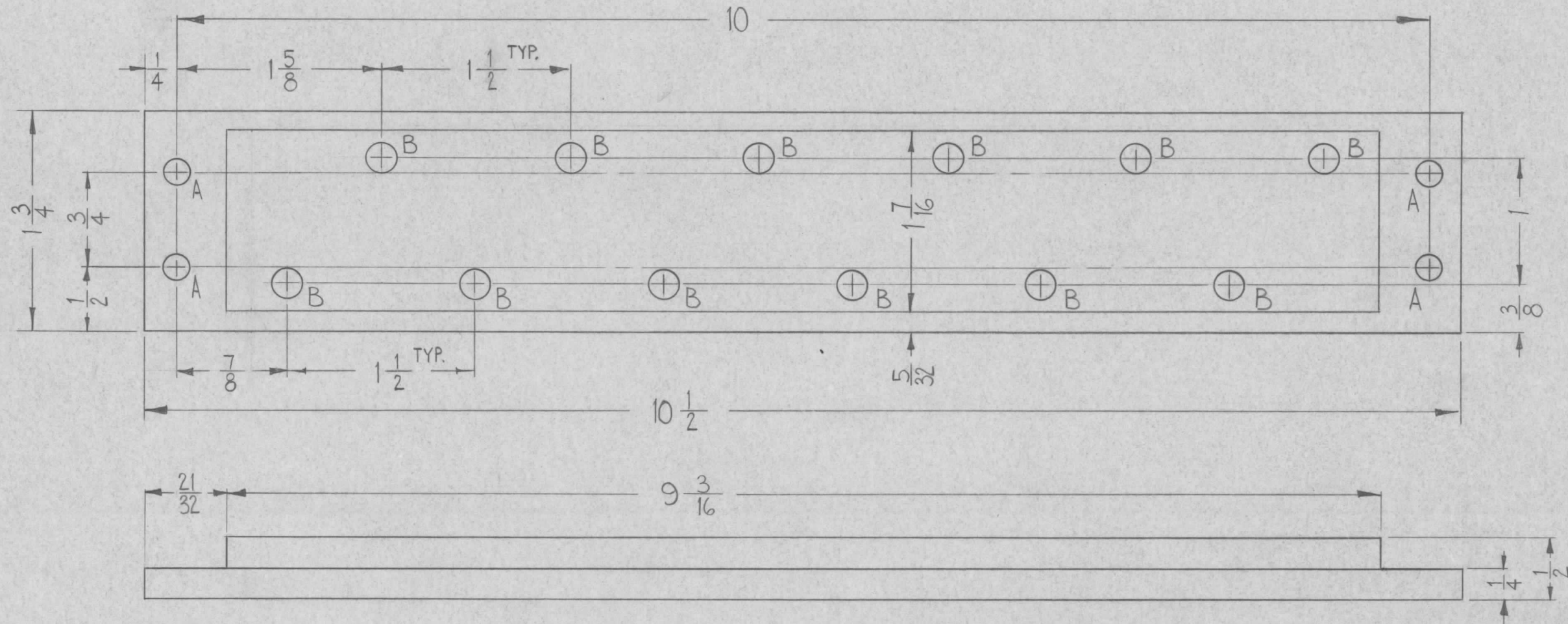
| | | | | |
|--------------------|----------|--|--------------------|---------|
| 16 | 1 | NT139-SFI-15 | INSERT, THREADED | |
| REQ. ITEM | PART NO. | F. BUDETTI | DESCRIPTION | SYMBOL |
| 3/8 THICK | | THE TECHNICAL MATERIEL CORP. MAMARONECK, NEW YORK | | |
| PHENOLIC | | BOARD, FILTER MOUNTING | | |
| MATERIAL | | | | |
| XXXXP | | <i>[Signature]</i> 7-24-63 | <i>[Signature]</i> | 4-7-64 |
| TYPE & TEMPER | | HEAT TREAT. SPEC. | DRAWN | CHECKED |
| COLOR: NATURAL | | FINAL APPROVAL | | |
| FINISH & SPEC. NO. | | ELEC. DES. APP. | MECH. DES. APP. | |

PX-766 A

PX-768 0

THE CONTENTS OF THIS DRAWING ARE THE EXCLUSIVE PROPERTY OF THE TECHNICAL MATERIEL CORP. ITS UNAUTHORIZED USE OR REPRODUCTION IN WHOLE OR IN PART IS STRICTLY FORBIDDEN.

| HOLE | DESCRIPTION | REQ. |
|------|-------------|------|
| A | 13/64 DIA. | 4 |
| B | 15/64 DIA. | 12 |



FINISH - FUNGUS PROOFING PER TMC SPECIFICATION S-113

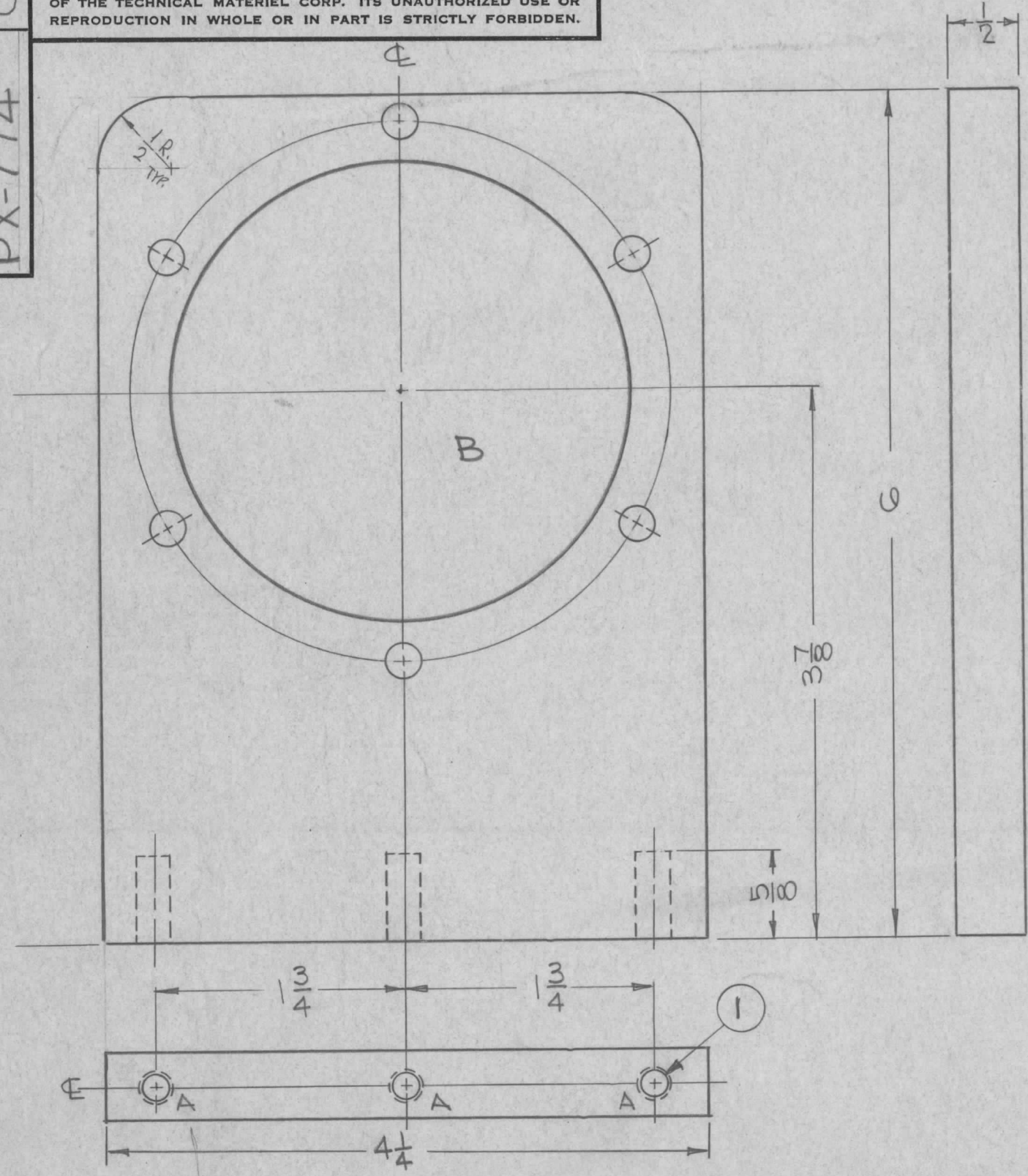
| REQ. | ITEM | PART NO. | F. BUDETTI | DESCRIPTION | SYMBOL |
|------|--------------------|-------------------|-----------------|------------------------------|----------------|
| | 1/2 THK. | | | THE TECHNICAL MATERIEL CORP. | |
| | STOCK SIZE | | | MAMARONECK, NEW YORK | |
| | PHENOLIC | | | BOARD, TERMINAL MOUNTING | |
| | MATERIAL | | | | |
| | XXXXP | | W.A. FRANCO | aa gcb RJC | 4-6-64 |
| | TYPE & TEMPER | HEAT TREAT. SPEC. | DRAWN | CHECKED | FINAL APPROVAL |
| | COLOR: NATURAL | | ODD AB | an 2/64 | PX-768 |
| | FINISH: SEE NOTE | | | | 0 |
| | FINISH & SPEC. NO. | | ELEC. DES. APP. | MECH. DES. APP. | |

| 0 ORIGINAL RELEASE FOR PRODUCTION | 2-7-64 | | | | | |
|-----------------------------------|----------------------------------|------|------------|--------|---------|-----------|
| SYM | DESCRIPTION | DATE | CH. NO. | DRAFTS | CHECKER | ENG. APP. |
| | UNLESS OTHERWISE SPECIFIED: | A | SCALE: 1=1 | | | |
| | DIMENSIONS ARE IN INCHES | | | | | |
| | TOLERANCES ON FRACTIONS ± 1/64 | | | | | |
| | DECIMALS ± .005 | | | | | |
| | ANGLES ± 1/2° | | | | | |
| | REMOVE ALL BURRS AND SHARP EDGES | | | | | |

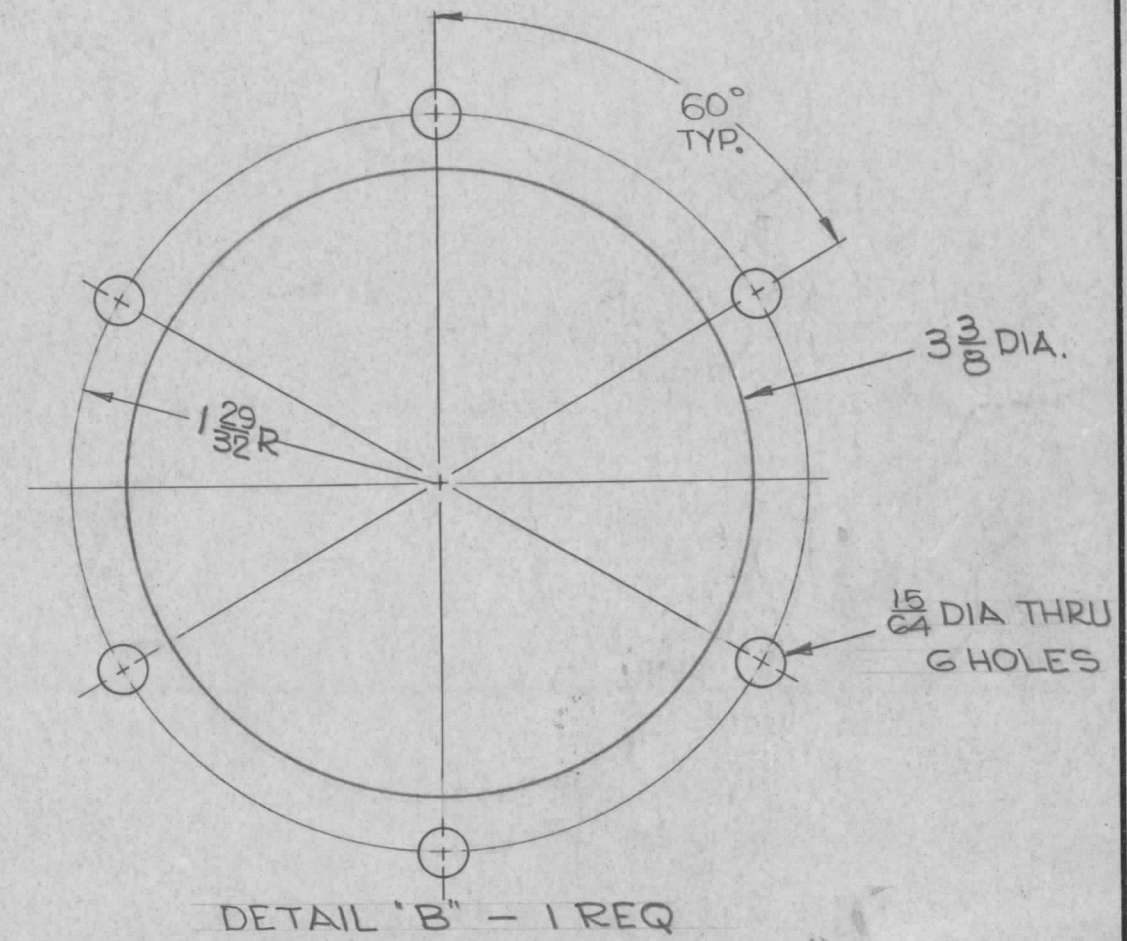
| REQ. PER UNIT | MODEL | SECTION | ASS'Y. NO. | DATE |
|---------------|----------|---------|------------|---------|
| 1 | GPT-200K | AX-394 | A-3259 | 9-16-63 |
| USED ON | | | | |

PX-774

THE CONTENTS OF THIS DRAWING ARE THE EXCLUSIVE PROPERTY OF THE TECHNICAL MATERIEL CORP. ITS UNAUTHORIZED USE OR REPRODUCTION IN WHOLE OR IN PART IS STRICTLY FORBIDDEN.



HOLE
 A — DRILL 13/64 (.203) TO .552 MIN. DEPTH — 3 REQ
 120° C'SK TO .22-.25 DIA
 TAP .410 MIN. DEPTH USING HELI-COIL TAP #3FPB
 INSTALL ITEM (1) 3/4 TO 1 1/2 PITCH BELOW SURFACE
 BREAK OFF DRIVING TANG



REF: LD-1389 & LD-1390

| | | | | |
|--------------------|------|---------------|------------------------------|-----------------|
| 3 | 1 | NT-139-SFI-20 | INSERT, HELI-COIL | |
| REQ. | ITEM | PART NO. | F. BUDETTI DESCRIPTION | SYMBOL |
| 1/2 | | | THE TECHNICAL MATERIEL CORP. | |
| STOCK SIZE | | | MAMARONECK, NEW YORK | |
| SILICA GLASS | | | SUPPORT, CAPACITOR | |
| G-7 | | | | |
| MATERIAL | | | | |
| TYPE & TEMPER | | | DRAWN | CHECKED |
| HEAT TREAT. SPEC. | | | AA | RJL |
| FINISH & SPEC. NO. | | | ELEC. DES. APP. | MECH. DES. APP. |
| | | | PX-774 | |

| | | | | | | |
|-----------------------------|---------------------------------|---|----------|---------|------------|-----------|
| 0 | ORIGINAL RELEASE FOR PRODUCTION | 5-13-64 | 0 | A.M. | | |
| SYM | DESCRIPTION | DATE | CH. NO. | DRAFTS | CHECKER | ENG. APP. |
| UNLESS OTHERWISE SPECIFIED: | | SCALE: 1:1 | | | | |
| DIMENSIONS ARE IN INCHES | | MAXIMUM ALLOWABLE TOLERANCES HAVE BEEN DETERMINED AND ANY DEVIATIONS WILL BE CAUSE FOR REJECTION. | | | | |
| TOLERANCES ON | | REMOVE ALL BURRS AND SHARP EDGES | | | | |
| FRACTIONS ± 1/64 | | | | | | |
| DECIMALS ± .005 | | | | | | |
| ANGLES ± 1/2° | | | | | | |
| CODE A | | | | | | |
| | | 2 | GPT-200K | AT-105 | A-2765 | 9-4-63 |
| | | REQ. PER UNIT | MODEL | SECTION | ASS'Y. NO. | DATE |
| | | USED ON | | | | |

HOLES

REQ.

A - DRILL 9/32 DIA. THRU, C'BORE
11/16 DIA. X 1/4 DEEP.

6

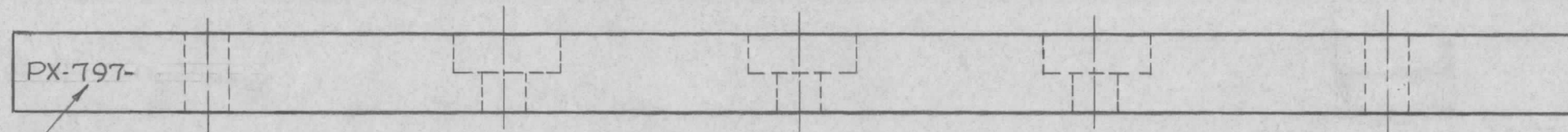
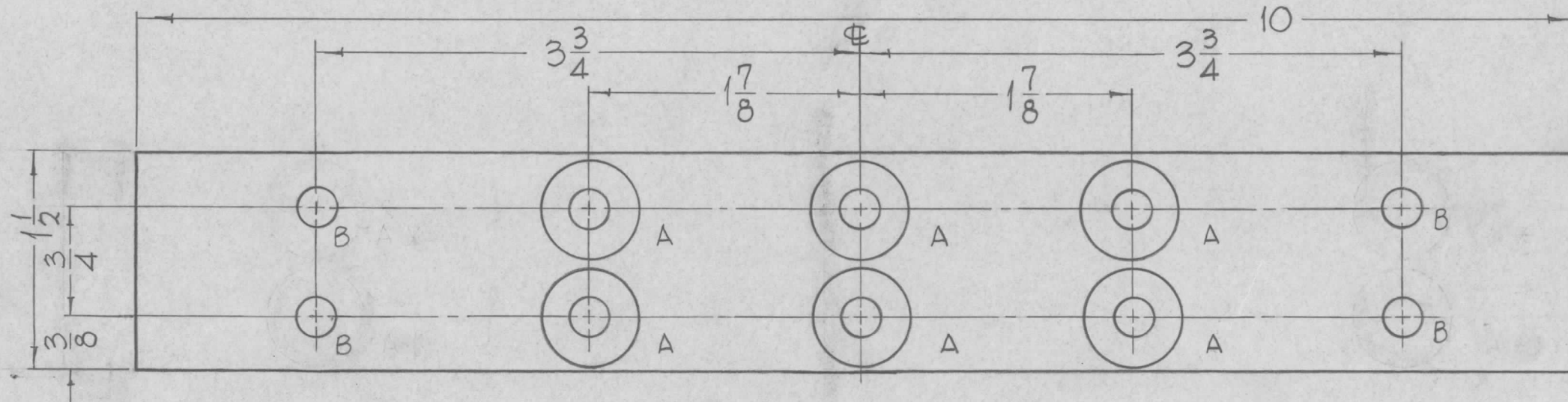
B - 15/64 DIA.

4

PX-797-0

REVISIONS

| SYM | DESCRIPTION | DATE | E.M.N. NO. | DRAFT | CHKD | APPD |
|-----|---------------------------------|--------|------------|-------|------|------|
| 0 | ORIGINAL RELEASE FOR PRODUCTION | 5-4-64 | | SRG | | |



STAMP TMC PART NO. 1/8 HIGH GOTHIC
WITH LATEST REVISION LETTER.

| REQ'D. | ITEM | PART NUMBER | DESCRIPTION | SYMBOL |
|--------|------|-------------|-------------|--------|
|--------|------|-------------|-------------|--------|

LIST OF MATERIAL

MATERIAL 1/2 THICK
PHENOLIC, XXXP
FINISH NATURAL
5-113-FUNGUS RESISTANT
VARNISH

THE TECHNICAL MATERIEL CORP.
MAMARONECK, NEW YORK

BOARD, COIL MTG.

| | | |
|-------------|--------------------|------------|
| 2 | GPT-10K(1) (AX505) | A-3480 |
| Q'TY./UNIT | MODEL USED ON | ASS'Y. NO. |
| SCALE 1"=1" | CODE A | |

UNLESS OTHERWISE SPECIFIED
DIMENSIONS ARE IN INCHES AND INCLUDE
CHEMICALLY APPLIED OR PLATED FINISHES

| | | | |
|-------------------------|--------------|----------------------------|-----------|
| DRAWN John C Biele | DATE 2-8-64 | FINAL APPROVAL [Signature] | DATE |
| CHECKED [Signature] | DATE 2/27/64 | | |
| ELECT. DES. [Signature] | DATE | PX-797 | 0 |
| MECH. DES. [Signature] | DATE 2/27/64 | SHEET | REV. LTR. |

| | | |
|--|------------|---|
| DECIMALS .X ± .05 .XX ± .01 .XXX ± .005 | TOLERANCES | FRACTIONS ± 1/64 ANGLES ± 0° 30' |
|--|------------|---|

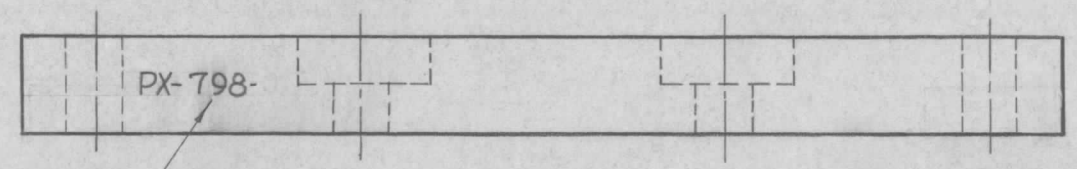
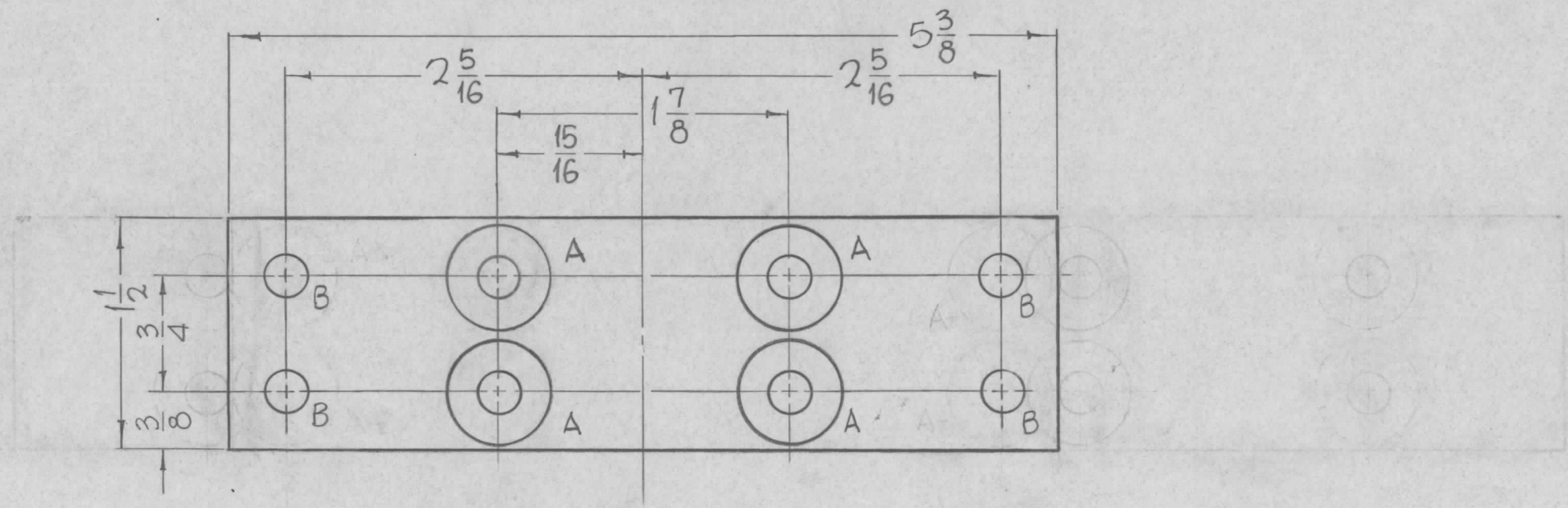
THE CONTENTS OF THIS DRAWING ARE THE EXCLUSIVE PROPERTY
OF THE TECHNICAL MATERIEL CORP. ITS UNAUTHORIZED USE OR
REPRODUCTION IN WHOLE OR IN PART IS STRICTLY FORBIDDEN.

NOTES

| HOLES | REQ |
|---|-----|
| A- DRILL 9/32 DIA. THRU, C'BORE 11/16 DIA. X 1/4 DEEP. | 4 |
| B- 15/64 DIA. | 4 |

PX-798 0

| REVISIONS | | | | | | |
|-----------|---------------------------------|------|------------|-------|------|------|
| SYM | DESCRIPTION | DATE | E.M.N. NO. | DRAFT | CHKD | APPD |
| 0 | ORIGINAL RELEASE FOR PRODUCTION | | | | | |



STAMP TMC PART NO. 1/8 HIGH GOTHIC
W/ LATEST REVISION LETTER

AX BORE POSITION

| | | |
|-------------|-----------------------|------------|
| 2 | GPT-10K () T (AX505) | A-3479 |
| Q'TY./UNIT | MODEL USED ON | ASS'Y. NO. |
| SCALE 1"=1" | CODE A | |

| REQ'D. | ITEM | PART NUMBER | DESCRIPTION | SYMBOL |
|---|------|-------------|--|--------------|
| LIST OF MATERIAL | | | | |
| MATERIAL 1/2 THICK, PHENOLIC, XXXD | | | THE TECHNICAL MATERIEL CORP. MAMARONECK, NEW YORK | |
| FINISH NATURAL 5-113- FUNGUS RESISTANT VARNISH | | | TITLE BOARD, COIL MTG. | |
| UNLESS OTHERWISE SPECIFIED DIMENSIONS ARE IN INCHES AND INCLUDE CHEMICALLY APPLIED OR PLATED FINISHES | | | DRAWN John C Biele | DATE 2-8-64 |
| | | | CHECKED GCB | DATE 2/27/64 |
| | | | ELECT. DES. JBS LB | DATE |
| | | | MECH. DES. AC | DATE 2/27/64 |
| | | | PX-798 | |
| | | | 0 | |
| | | | SHEET | |
| | | | REV. LTR. | |

NOTES

THE CONTENTS OF THIS DRAWING ARE THE EXCLUSIVE PROPERTY OF THE TECHNICAL MATERIEL CORP. ITS UNAUTHORIZED USE OR REPRODUCTION IN WHOLE OR IN PART IS STRICTLY FORBIDDEN.

| | | |
|--|------------|---|
| DECIMALS .X ± .05 .XX ± .01 .XXX ± .005 | TOLERANCES | FRACTIONS ± 1/64 ANGLES ± 0° 30' |
|--|------------|---|