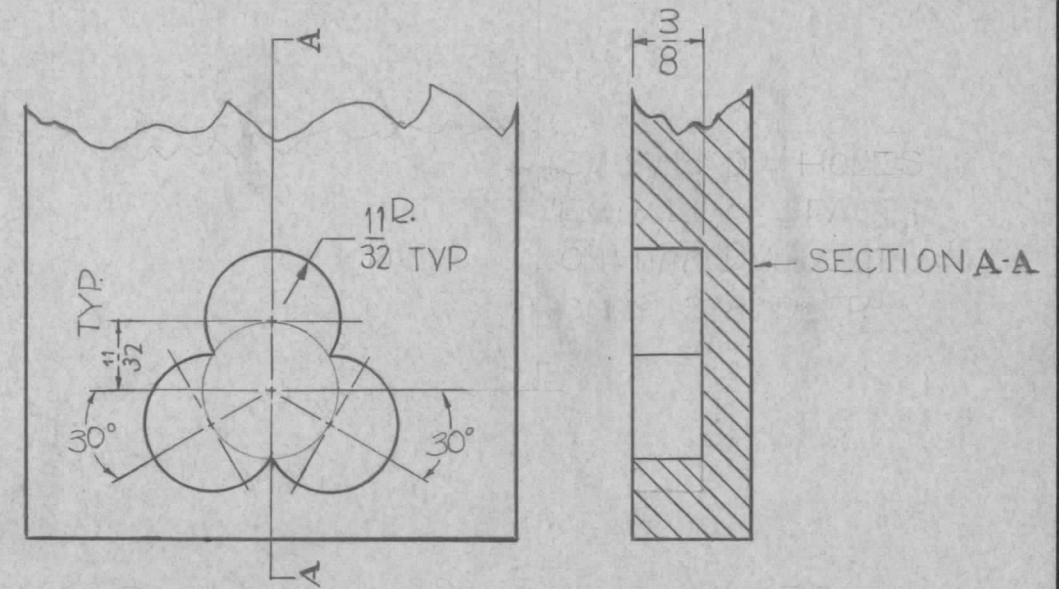
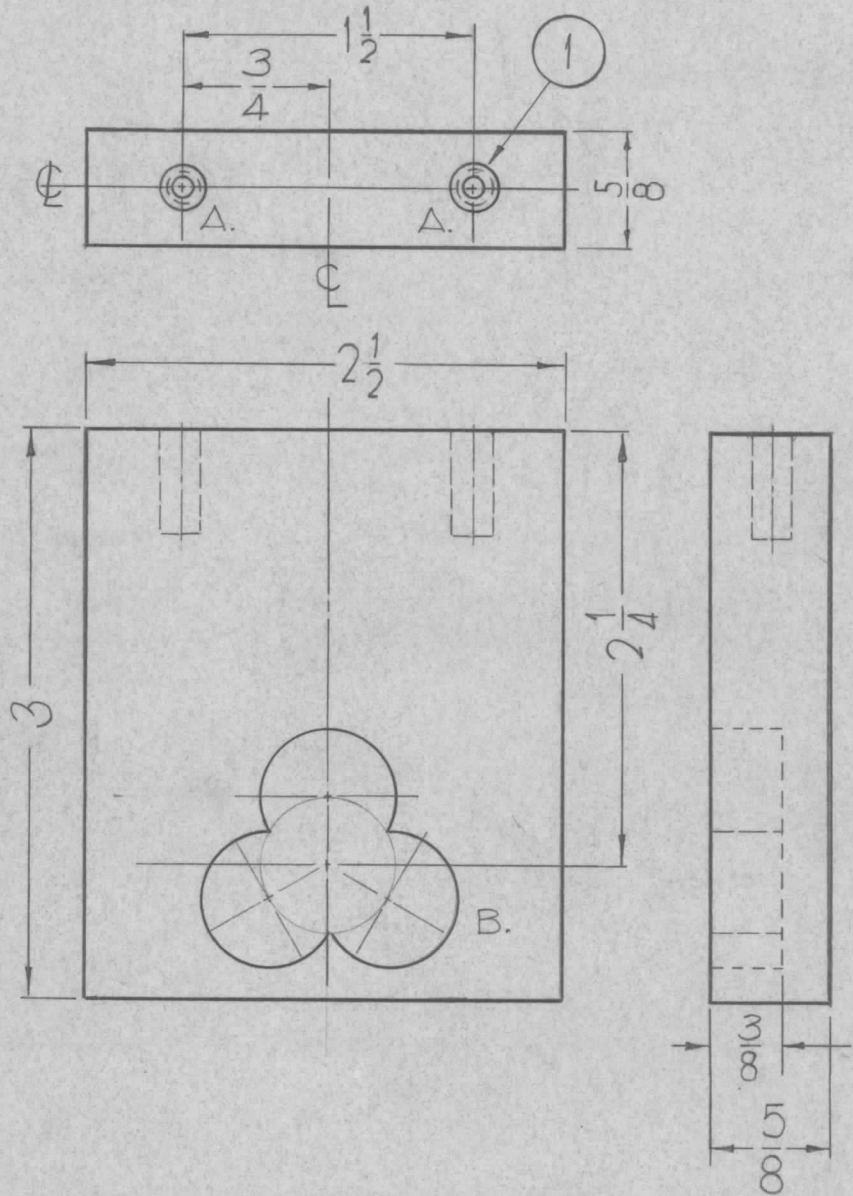


PX-736 0

THE CONTENTS OF THIS DRAWING ARE THE EXCLUSIVE PROPERTY OF THE TECHNICAL MATERIEL CORP. ITS UNAUTHORIZED USE OR REPRODUCTION IN WHOLE OR IN PART IS STRICTLY FORBIDDEN.



(3) 11/16 DIA. HOLES EQUALLY SPACED ON 11/16 DIA. CUT ONLY 3/8 DEEP.

DETAIL B.

(1)REQ.

HOLES:

- A~1-DRILL 13/64 (.203) TO .552 MIN. DEPTH.
- 2-120° C'SINK .22 - .25 DIA.
- 3-TAP, 410 MIN. DEPTH USE HELI-COIL TAP NO. 3FPB
- 4-INSTALL ITEM ① 3/4 TO 1-1/2 PITCH BELOW SURFACE
- 5-BREAK OFF DRIVING TANG.

B~ SEE DETAIL

2	1	NT-139-SF-1-20	HELI-COIL	
REQ.	ITEM	PART NO.	DESCRIPTION	SYMBOL
5/8 THICK			THE TECHNICAL MATERIEL CORP.	
STOCK SIZE			MAMARONECK, NEW YORK	
SILICONE-GLASS G-7			SUPPORT CORES	
MATERIAL				
			J.F. VITRO	aa
TYPE & TEMPER			DRAWN	CHECKED
HEAT TREAT. SPEC.			FINAL APPROVAL	
FINISH & SPEC. NO.			ELEC. DES. APP.	MECH. DES. APP.
			PX-736 0	

0	ORIGINAL RELEASE FOR PRODUCTION	5-13-64	0	A.M.	
SYM	DESCRIPTION	DATE	CH. NO.	DRAFTS	CHECKER
UNLESS OTHERWISE SPECIFIED:		SCALE:			
DIMENSIONS ARE IN INCHES		MAXIMUM ALLOWABLE TOLERANCES HAVE BEEN DETERMINED AND ANY DEVIATIONS WILL BE CAUSE FOR REJECTION.			
TOLERANCES ON FRACTIONS ± 1/64		REMOVE ALL BURRS AND SHARP EDGES			
DECIMALS ± .005					
ANGLES ± 1/2°					
CODE A					

4	GPT-200 K	AX-393	A-2753	3-12-63
REQ. PER UNIT	MODEL	SECTION	ASS'Y. NO.	DATE
USED ON				