

THE CONTENTS OF THIS DRAWING ARE THE EXCLUSIVE PROPERTY OF THE TECHNICAL MATERIEL CORP. ITS UNAUTHORIZED USE OR REPRODUCTION IN WHOLE OR IN PART IS STRICTLY FORBIDDEN.

REQ. PER UNIT

4

TRC 20K

USED ON

MODEL

ASS'Y. NO.

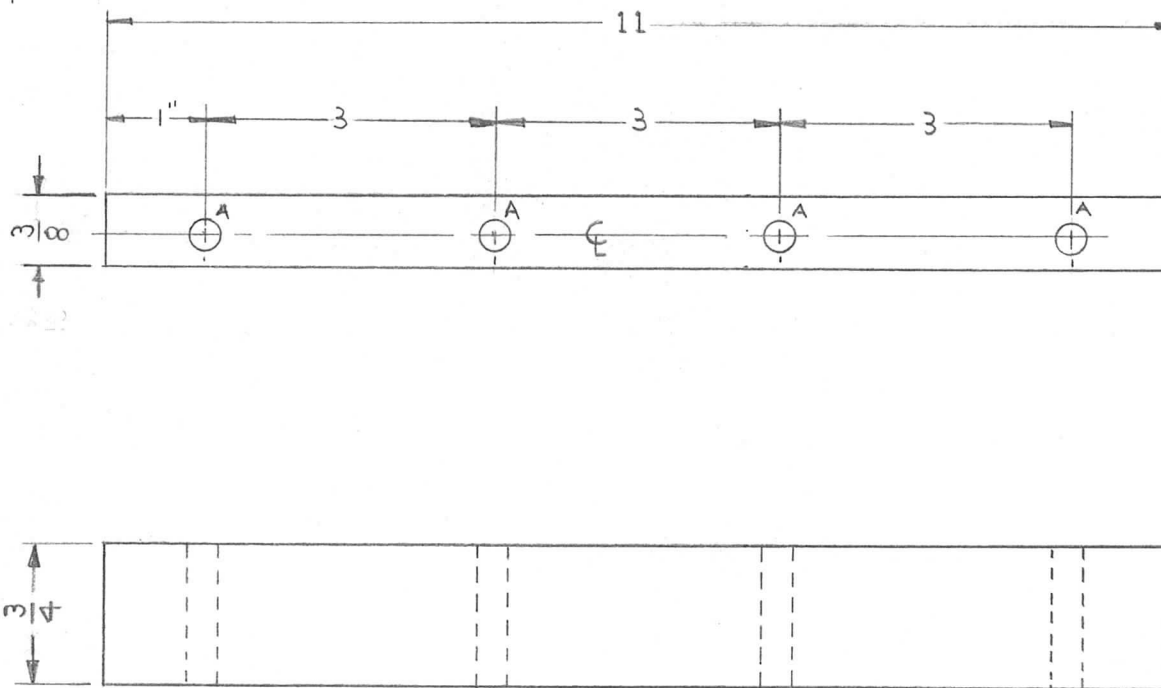
DATE

10-2-61

PX-626

HOLE
A-DR. & TAP
FOR 8-32

REQ'D
4



NOTE ~ All Machined Surfaces
To be coated Twice with
Q85.

REQ.	ITEM	PART NO.	DESCRIPTION			SYMBOL
		3/8	THE TECHNICAL MATERIEL CORP.			
		STOCK SIZE	MAMARONECK, NEW YORK			
		SILICON GLASS	PRESSURE PLATE (PART 2)			
		MATERIAL				
SYM	DESCRIPTION	DATE	CH. NO.	DRAFTS	CHECKER	ENG. APP.
UNLESS OTHERWISE SPECIFIED: DIMENSIONS ARE IN INCHES TOLERANCES ON FRAC. ± 1/64 DEC. ± .005 ANGLES ± 1/2°		SCALE: MAXIMUM ALLOWABLE TOLERANCES HAVE BEEN DETERMINED AND ANY DEVIATIONS WILL BE CAUSE FOR REJECTION. REMOVE ALL BURRS AND SHARP EDGES				
	G7					
	TYPE & TEMPER	HEAT TREAT. SPEC.	DRAWN	CHECKED	FINAL APPROVAL	
	SEE NOTE		Relly	LB	DX-626	
	FINISH & SPEC. NO.		ELEC. DES. APP.	MECH. DES. APP.		